

# Converting Colors

CIELCh(20, 10.509, 31.290)

Have a look what the booklet for  
CIELCh(20, 10.509, 31.290) contains.

<b>CIELCh(20, 10.754, 28.843)</b> .....	3
<i><b>Conversions</b></i> .....	4
<i><b>Details</b></i> .....	6
<i><b>Harmonies</b></i> .....	11
<i><b>Previews</b></i> .....	20
<i><b>Color Blindness Simulation</b></i> .....	23
<i><b>CSS Examples</b></i> .....	26

# Color

**CIELCh(20, 10.754, 28.843)**

# Conversions

## Conversions Part 1

Format	Color
Hex	402B29
RGB	64, 43, 41
RGB Percent	25%, 17%, 16%
CMY	0.7486, 0.8310, 0.8388
CMYK	0.00, 0.33, 0.36, 0.75
HSL	5°, 22%, 21%
HSV	5°, 36%, 25%
XYZ	3.3904, 2.9891, 2.5048
YIQ	49.0510, 13.1580, 3.8300

# Conversions

## Conversions Part 2

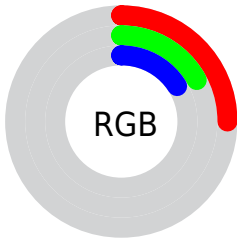
<b>Format</b>	<b>Color</b>
<a href="#">RYB</a>	64, 43, 41
Decimal	4205353
CIELab	20.00, 9.42, 5.19
CIElCh	20, 10.754, 28.843
Yxy	2.9891, 0.3816, 0.3364
Android (android.graphics.Color)	4282395433 (0xFF402B29)
YUV	49.0510, -3.9691, 13.1103
Hunter-Lab	17.2889, 4.7493, 3.5123

# Details

The CIELCh color **20, 10.754, 28.843** is a dark color, and the websafe version is hex **333333**. A complement of this color would be **25, 8.593, 206.940**, and the grayscale version is **20, 0.004, 296.813**.

A 20% lighter version of the original color is **40, 10.829, 30.398**, and **1, 6.850, 19.405** is the 20% darker color. If you saturate the color by 10%, you get **18, 14.233, 29.672**, and if you desaturate by 10%, it is **22, 7.485, 28.222**.

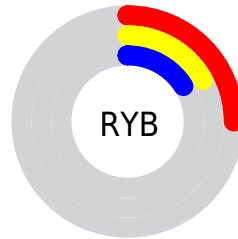
# Distribution



Red (25%)

Green (17%)

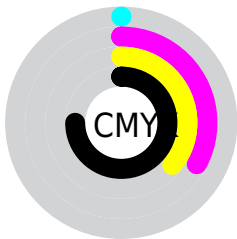
Blue (16%)



Red (25%)

Yellow (17%)

Blue (16%)

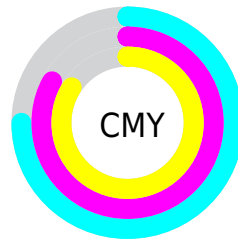


Cyan (0%)

Magenta (33%)

Yellow (36%)

Black (75%)



Cyan (75%)

Magenta (83%)

Yellow (84%)

# Brightness & Saturation Gradients


These gradients show how the CIELCh color 20, 10.754, 28.843 changes by changing the brightness by 10 percent. The first figure shows a shift by +10% for each color and the second figure -10%.

Similar to the brightness gradients but the following saturation gradients show a change of the CIELCh color 20, 10.754, 28.843 by changing the saturation by 10% instead.



 20, 10.754, 28.843

 20, 10.754, 28.843

 100, 10.754,  
28.843

 10, 10.754, 28.843

 40, 10.754, 28.843

 0, 10.754, 28.843

 50, 10.754, 28.843

 60, 10.754, 28.843

 70, 10.754, 28.843

 80, 10.754, 28.843

 90, 10.754, 28.843

 20, 10.754, 28.843

 20, 10.754, 28.843

18, 14.233, 29.672

22, 7.485, 28.222

16, 17.906, 30.742

24, 4.431, 27.743

15, 21.737, 32.105

26, 1.585, 27.311

13, 25.336, 32.676

28, 1.067, 207.468

12, 28.289, 31.996

30, 3.539, 207.149

11, 30.830, 31.673

32, 5.850, 207.024

11, 31.876, 31.551

34, 8.015, 206.961

36, 10.049,  
206.938

38, 11.968,  
206.945

# Harmonies

# Complementary

The Complementary color scheme is a pair of colors which are on the opposite of each other on the color wheel.



20, 10.754, 28.843



25, 8.593, 206.940

# Rectangle

The Rectangle color scheme consists of four colors that form a rectangle on the color wheel.



20, 10.754, 28.843



20, 10.754, 78.843



20, 10.754, 208.843



20, 10.754, 258.843

# Sweetspot

The Sweet Spot groups the original color and five complimentary colors.



20, 10.753, 28.848



33, 3.786, 27.561



20, 17.428, 328.573



16, 2.571, 27.580



70, 0.009, 296.813



18, 0.003, 296.813



# Same Dimension

The Same Dimension uses a secret algorithm to generate beautiful new colors.



20, 10.753, 28.848



25, 16.669, 29.582



23, 10.165, 79.760



12, 1.554, 27.439



19, 47.005, 37.824



47, 93.702, 40.821





# Inverse Universe

The Inverse Universe completely reimagines the original color for something new.



25, 8.593, 206.940



32, 12.471, 207.005



21, 9.731, 268.935



12, 1.481, 207.253



34, 22.312, 210.604

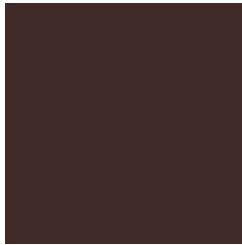


75, 40.918, 211.838



# Previews

## White Background



This preview shows how the CIE LCh color 20, 10.754, 28.843 looks on a white background.

## Color Contrast Check

Large Text (above 18pt) WCAG AA ✓ Pass

Any Text WCAG AA ✓ Pass

Large Text (above 18pt) WCAG AAA ✓ Pass

Any Text WCAG AAA ✓ Pass

# Black Background



This preview shows how the CIELCh color 20, 10.754, 28.843 looks on a black background.

## Color Contrast Check

Large Text (above 18pt) WCAG AA × Fail

Any Text WCAG AA × Fail

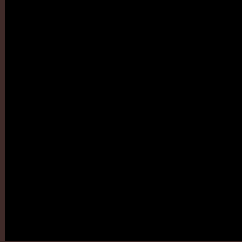
Large Text (above 18pt) WCAG AAA × Fail

Any Text WCAG AAA × Fail

If you want to check with other color combinations, try the [Color Contrast Checker](#).

**CIELCh 20, 10.754, 28.843**

## **Background**



This preview shows how black text looks on a background with the CIELCh color 20, 10.754, 28.843.

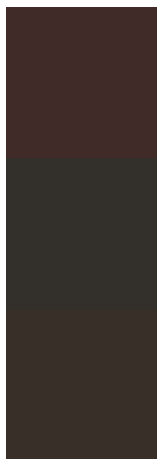


This preview shows how white text looks on a background with the CIELCh color 20, 10.754, 28.843.

# Color Blindness Simulation

Color vision deficiency is a very complex topic, and I could not describe the different causes any better than Wikipedia does, so if you want to learn more, you should check out their [article about color blindness](#).

## Dichromacy



### Original Color

20, 10.754, 28.843

### Protanopia

20, 3.073, 81.246

### Deuteranopia

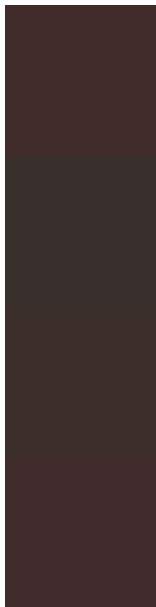
20, 6.593, 65.628



**Tritanopia**  
20, 11.533, 8.718



# Trichromacy



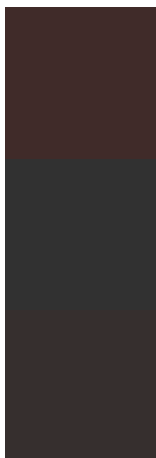
**Original Color**  
20, 10.754, 28.843

**Protanomaly**  
20, 5.363, 42.487

**Deuteranomaly**  
20, 7.797, 51.636

**Tritanomaly**  
20, 11.466, 15.387

# Monochromacy



**Original Color**  
20, 10.754, 28.843

**Achromatopsia**  
20, 0.004, 296.813

**Achromatomaly**  
20, 3.447, 31.331

# CSS Examples

## Text

The CSS property to change the color of the text to CIELCh 20, 10.754, 28.843 is called "color". The color property can be set on classes, ids or directly on the HTML element.

This example shows how text in the color `rgb(64, 43, 41)` looks like.

```
.text, #text, p{  
    color:rgb(64, 43, 41)  
}
```

If you want to add a text shadow in that color use the text-shadow property, you can generate a text shadow directly with our [CSS Text Shadow Generator](#).

Here you see how black text with a 4 pixel rgb(64, 43, 41) colored shadow looks like.

```
.shadow{ text-shadow: 4px 4px 2px rgb(64, 43, 41) }
```

## Border

The CSS property to change the border of an element to CIELCh 20, 10.754, 28.843 is called "border". The border property can be set on classes, ids or directly on the HTML element.

This example shows the color as border, it can be applied via the CSS property "border" or "border-color".

```
.border, #border, table{ border:4px solid rgb(64, 43, 41) }
```

If only the border color should be changed use the property border-color.

```
.border{ border-color:rgb(64, 43, 41) }
```

If you want to add a box shadow in that color use:

Here you see how a box with a 4 pixel rgb(64, 43, 41) colored shadow looks like.

```
.boxshadow{ -moz-box-shadow:4px 4px 4px  
4px rgb(64, 43, 41); -webkit-box-  
shadow:4px 4px 4px 4px rgb(64, 43, 41);  
box-shadow:4px 4px 4px 4px rgb(64, 43, 41)  
}
```

# Background

The CSS property to change the background color of an element to CIELCh 20, 10.754, 28.843 is called "background". The background property can be set on classes, ids or directly on the HTML element.

```
.background, #background, body{  
background: rgb(64, 43, 41) }
```

If only the background color should be changed can be used:

```
.background{ background-color: rgb(64, 43,  
41) }
```

This example shows the color as background, it is applied via the CSS property "background".

To optimize and compress your CSS code, you can use our [online CSS compressor and optimizer](#) based on csstidy. If you want to create a linear or radial gradient as background or border, check our [CSS Gradient Generator](#).

Hey! You found this booklet interesting? Support Converting Colors with the new Membership Option!

The pro membership hides all ads, plus gives you double the colors in the color bucket, and more awesome pro features!

**[Learn more, Memberships starting at \\$2.50/m!](#)**

**Follow me  
on Twitter!**

@ConvertingColor