

Converting Colors

CIELCh(20, 10.540, 26.136)

Have a look what the booklet for
CIELCh(20, 10.540, 26.136) contains.

CIELCh(20, 10.604, 25.343)	3
<i>Conversions</i>	4
<i>Details</i>	6
<i>Harmonies</i>	11
<i>Previews</i>	20
<i>Color Blindness Simulation</i>	23
<i>CSS Examples</i>	26

Color

CIELCh(20, 10.604, 25.343)

Conversions

Conversions Part 1

Format	Color
Hex	402B2A
RGB	64, 43, 42
RGB Percent	25%, 17%, 16%
CMY	0.7489, 0.8312, 0.8352
CMYK	0.00, 0.33, 0.34, 0.75
HSL	3°, 21%, 21%
HSV	3°, 34%, 25%
XYZ	3.4006, 2.9891, 2.5915
YIQ	49.1650, 12.8370, 4.1410

Conversions

Conversions Part 2

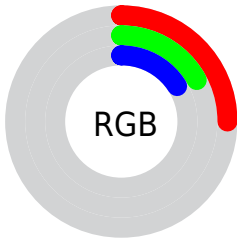
Format	Color
RYB	64, 43, 42
Decimal	4205354
CIELab	20.00, 9.58, 4.54
CIElCh	20, 10.604, 25.343
Yxy	2.9891, 0.3786, 0.3328
Android (android.graphics.Color)	4282395434 (0xFF402B2A)
YUV	49.1650, -3.5323, 13.0103
Hunter-Lab	17.2889, 4.8538, 3.2149

Details

The CIELCh color **20, 10.604, 25.343** is a dark color, and the websafe version is hex **333333**. A complement of this color would be **25, 8.591, 202.440**, and the grayscale version is **20, 0.004, 296.813**.

A 20% lighter version of the original color is **40, 10.245, 27.505**, and **1, 6.850, 19.405** is the 20% darker color. If you saturate the color by 10%, you get **18, 14.152, 26.343**, and if you desaturate by 10%, it is **22, 7.260, 24.569**.

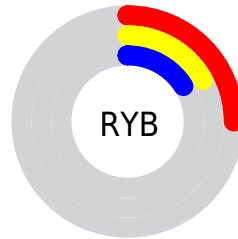
Distribution



Red (25%)

Green (17%)

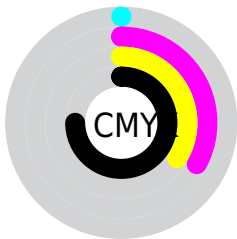
Blue (16%)



Red (25%)

Yellow (17%)

Blue (16%)

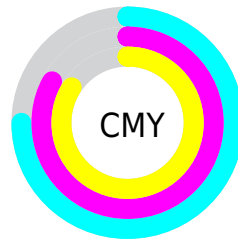


Cyan (0%)

Magenta (33%)

Yellow (34%)

Black (75%)



Cyan (75%)

Magenta (83%)

Yellow (84%)

Brightness & Saturation Gradients

These gradients show how the CIELCh color 20, 10.604, 25.343 changes by changing the brightness by 10 percent. The first figure shows a shift by +10% for each color and the second figure -10%.

Similar to the brightness gradients but the following saturation gradients show a change of the CIELCh color 20, 10.604, 25.343 by changing the saturation by 10% instead.

■ 20, 10.604, 25.343

■ 20, 10.604, 25.343

■ 100, 10.604,
25.343

■ 10, 10.604, 25.343

■ 0, 10.604, 25.343

■ 40, 10.604, 25.343

■ 50, 10.604, 25.343

■ 60, 10.604, 25.343

■ 70, 10.604, 25.343

■ 80, 10.604, 25.343

■ 90, 10.604, 25.343

■ 20, 10.604, 25.343

■ 20, 10.604, 25.343

18, 14.152, 26.343

22, 7.260, 24.569

16, 17.884, 27.614

24, 4.131, 23.949

15, 21.754, 29.219

26, 1.211, 23.345

13, 25.451, 30.304

28, 1.513, 203.360

12, 28.486, 30.067

30, 4.054, 202.985

11, 31.075, 29.783

33, 6.429, 202.755

10, 32.591, 29.502

35, 8.657, 202.587

37, 10.751,
202.463

39, 12.728,
202.372

Harmonies

Complementary

The Complementary color scheme is a pair of colors which are on the opposite of each other on the color wheel.



20, 10.604, 25.343



25, 8.591, 202.440

Rectangle

The Rectangle color scheme consists of four colors that form a rectangle on the color wheel.



20, 10.604, 25.343



20, 10.604, 75.343



20, 10.604, 205.343



20, 10.604, 255.343

Sweetspot

The Sweet Spot groups the original color and five complimentary colors.



20, 10.603, 25.348



33, 3.562, 23.732



20, 17.254, 327.001



16, 2.457, 23.765



70, 0.009, 296.813



18, 0.003, 296.813

Same Dimension

The Same Dimension uses a secret algorithm to generate beautiful new colors.



20, 10.603, 25.348



25, 16.338, 26.176



23, 9.396, 75.090



12, 1.614, 23.626



19, 47.598, 36.605



47, 94.368, 40.376

Inverse Universe

The Inverse Universe completely reimagines the original color for something new.



25, 8.591, 202.440



33, 12.467, 202.304



21, 8.797, 263.725



12, 1.539, 203.192



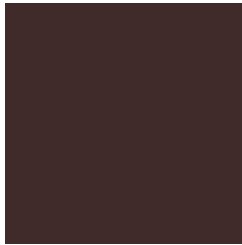
35, 23.284, 203.412



78, 42.772, 203.994

Previews

White Background



This preview shows how the CIE LCh color 20, 10.604, 25.343 looks on a white background.

Color Contrast Check

Large Text (above 18pt) WCAG AA ✓ Pass

Any Text WCAG AA ✓ Pass

Large Text (above 18pt) WCAG AAA ✓ Pass

Any Text WCAG AAA ✓ Pass

Black Background



This preview shows how the CIE LCh color 20, 10.604, 25.343 looks on a black background.

Color Contrast Check

Large Text (above 18pt) WCAG AA × Fail

Any Text WCAG AA × Fail

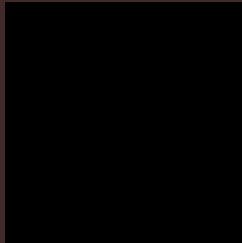
Large Text (above 18pt) WCAG AAA × Fail

Any Text WCAG AAA × Fail

If you want to check with other color combinations, try the [Color Contrast Checker](#).

CIELCh 20, 10.604, 25.343

Background



This preview shows how black text looks on a background with the CIELCh color 20, 10.604, 25.343.

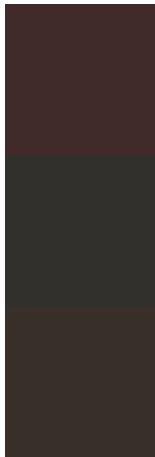


This preview shows how white text looks on a background with the CIELCh color 20, 10.604, 25.343.

Color Blindness Simulation

Color vision deficiency is a very complex topic, and I could not describe the different causes any better than Wikipedia does, so if you want to learn more, you should check out their [article about color blindness](#).

Dichromacy



Original Color

20, 10.604, 25.343

Protanopia

20, 2.244, 84.321

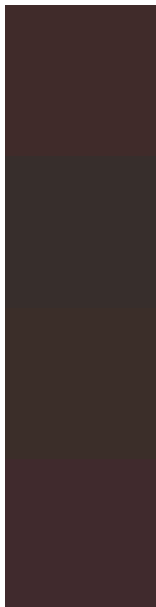
Deuteranopia

20, 6.096, 61.567



Tritanopia
20, 11.050, 7.976

Trichromacy



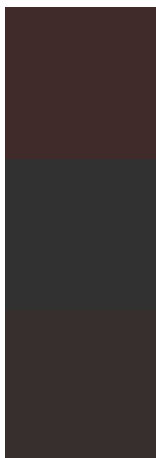
Original Color
20, 10.604, 25.343

Protanomaly
20, 4.623, 37.234

Deuteranomaly
20, 7.418, 47.485

Tritanomaly
20, 10.985, 11.446

Monochromacy



Original Color
20, 10.604, 25.343

Achromatopsia
20, 0.004, 296.813

Achromatomaly
20, 3.447, 31.331

CSS Examples

Text

The CSS property to change the color of the text to CIELCh 20, 10.604, 25.343 is called "color". The color property can be set on classes, ids or directly on the HTML element.

This example shows how text in the color `rgb(64, 43, 42)` looks like.

```
.text, #text, p{  
  color:rgb(64, 43, 42)  
}
```

If you want to add a text shadow in that color use the text-shadow property, you can generate a text shadow directly with our [CSS Text Shadow Generator](#).

Here you see how black text with a 4 pixel rgb(64, 43, 42) colored shadow looks like.

```
.shadow{ text-shadow: 4px 4px 2px rgb(64, 43, 42) }
```

Border

The CSS property to change the border of an element to CIELCh 20, 10.604, 25.343 is called "border". The border property can be set on classes, ids or directly on the HTML element.

This example shows the color as border, it can be applied via the CSS property "border" or "border-color".

```
.border, #border, table{ border:4px solid rgb(64, 43, 42) }
```

If only the border color should be changed use the property border-color.

```
.border{ border-color:rgb(64, 43, 42) }
```

If you want to add a box shadow in that color use:

Here you see how a box with a 4 pixel rgb(64, 43, 42) colored shadow looks like.

```
.boxshadow{ -moz-box-shadow:4px 4px 4px  
4px rgb(64, 43, 42); -webkit-box-  
shadow:4px 4px 4px 4px rgb(64, 43, 42);  
box-shadow:4px 4px 4px 4px rgb(64, 43, 42)  
}
```

Background

The CSS property to change the background color of an element to CIELCh 20, 10.604, 25.343 is called "background". The background property can be set on classes, ids or directly on the HTML element.

```
.background, #background, body{  
background: rgb(64, 43, 42) }
```

If only the background color should be changed can be used:

```
.background{ background-color: rgb(64, 43,  
42) }
```

This example shows the color as background, it is applied via the CSS property "background".

To optimize and compress your CSS code, you can use our [online CSS compressor and optimizer](#) based on csstidy. If you want to create a linear or radial gradient as background or border, check our [CSS Gradient Generator](#).

Hey! You found this booklet
interesting? Support Converting
Colors with the new Membership
Option!

The pro membership hides all ads, plus gives you
double the colors in the color bucket, and more
awesome pro features!

[Learn more, Memberships starting at \\$2.50/m!](#)

**Follow me
on Twitter!**

@ConvertingColor