

Converting Colors

CIELCh(20, 10.596, 4.243)

Have a look what the booklet for
CIELCh(20, 10.596, 4.243) contains.

CIELCh(20, 10.533, 7.124)	3
<i>Conversions</i>	4
<i>Details</i>	6
<i>Harmonies</i>	11
<i>Previews</i>	20
<i>Color Blindness Simulation</i>	23
<i>CSS Examples</i>	26

Color

CIELCh(20, 10.533, 7.124)

Conversions

Conversions Part 1

Format	Color
Hex	402B2F
RGB	64, 43, 47
RGB Percent	25%, 17%, 18%
CMY	0.7502, 0.8325, 0.8168
CMYK	0.00, 0.33, 0.27, 0.75
HSL	349°, 20%, 21%
HSV	349°, 33%, 25%
XYZ	3.4546, 2.9891, 3.0534
YIQ	49.7350, 11.2320, 5.6960

Conversions

Conversions Part 2

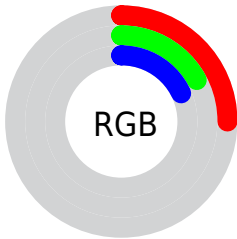
Format	Color
RYB	64, 43, 47
Decimal	4205359
CIELab	20.00, 10.45, 1.31
CIELCh	20, 10.533, 7.124
Yxy	2.9891, 0.3638, 0.3147
Android (android.graphics.Color)	4282395439 (0xFF402B2F)
YUV	49.7350, -1.3484, 12.5104
Hunter-Lab	17.2889, 5.4118, 1.6310

Details

The CIELCh color **20, 10.533, 7.124** is a dark color, and the websafe version is hex **333333**. A complement of this color would be **25, 9.314, 181.339**, and the grayscale version is **21, 0.004, 296.813**.

A 20% lighter version of the original color is **40, 10.210, 7.177**, and **2, 7.827, 19.405** is the 20% darker color. If you saturate the color by 10%, you get **18, 13.972, 8.486**, and if you desaturate by 10%, it is **22, 7.184, 5.980**.

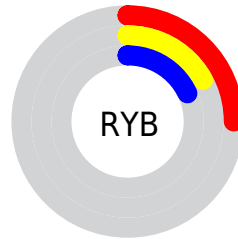
Distribution



Red (25%)

Green (17%)

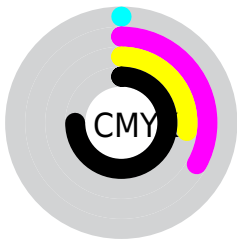
Blue (18%)



Red (25%)

Yellow (17%)

Blue (18%)

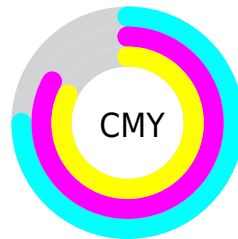


Cyan (0%)

Magenta (33%)

Yellow (27%)

Black (75%)



Cyan (75%)

Magenta (83%)

Yellow (82%)

Brightness & Saturation Gradients

These gradients show how the CIELCh color 20, 10.533, 7.124 changes by changing the brightness by 10 percent. The first figure shows a shift by +10% for each color and the second figure -10%.

Similar to the brightness gradients but the following saturation gradients show a change of the CIELCh color 20, 10.533, 7.124 by changing the saturation by 10% instead.

■ 20, 10.533, 7.124

■ 20, 10.533, 7.124

■ 100, 10.533, 7.124

■ 10, 10.533, 7.124

■ 40, 10.533, 7.124

■ 0, 10.533, 7.124

■ 50, 10.533, 7.124

■ 60, 10.533, 7.124

■ 70, 10.533, 7.124

■ 80, 10.533, 7.124

■ 90, 10.533, 7.124

■ 20, 10.533, 7.124

■ 20, 10.533, 7.124

■ 18, 13.972, 8.486

■ 22, 7.184, 5.980

16, 17.449, 10.122

24, 3.961, 4.983

14, 20.886, 12.116

26, 0.879, 3.941

13, 24.183, 14.567

28, 2.056, 183.576

12, 27.217, 17.431

31, 4.848, 182.861

11, 29.984, 19.126

33, 7.502, 182.263

10, 32.015, 19.176

35, 10.030,
181.730

37, 12.440,
181.250

40, 14.743,
180.811

Harmonies

Complementary

The Complementary color scheme is a pair of colors which are on the opposite of each other on the color wheel.



20, 10.533, 7.124



25, 9.314, 181.339

Rectangle

The Rectangle color scheme consists of four colors that form a rectangle on the color wheel.



20, 10.533, 7.124



20, 10.533, 57.124



20, 10.533, 187.124



20, 10.533, 237.124

Sweetspot

The Sweet Spot groups the original color and five complimentary colors.



20, 10.532, 7.128



32, 3.741, 4.745



20, 16.015, 320.084



15, 2.512, 4.791



69, 0.009, 296.813



16, 0.003, 296.813

Same Dimension

The Same Dimension uses a secret algorithm to generate beautiful new colors.



20, 10.532, 7.128



24, 15.967, 8.297



22, 8.567, 49.830



10, 1.626, 4.552



18, 43.661, 25.958



47, 84.711, 30.850

Inverse Universe

The Inverse Universe completely reimagines the original color for something new.



20, 10.532, 7.128



24, 15.967, 8.297



23, 7.208, 234.370



10, 1.626, 4.552



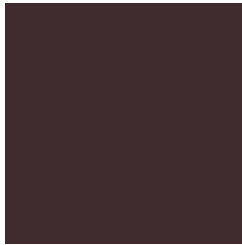
18, 43.661, 25.958



47, 84.711, 30.850

Previews

White Background



This preview shows how the CIE LCh color 20, 10.533, 7.124 looks on a white background.

Color Contrast Check

Large Text (above 18pt) WCAG AA ✓ Pass

Any Text WCAG AA ✓ Pass

Large Text (above 18pt) WCAG AAA ✓ Pass

Any Text WCAG AAA ✓ Pass

Black Background



This preview shows how the CIELCh color 20, 10.533, 7.124 looks on a black background.

Color Contrast Check

Large Text (above 18pt) WCAG AA × Fail

Any Text WCAG AA × Fail

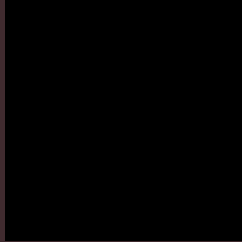
Large Text (above 18pt) WCAG AAA × Fail

Any Text WCAG AAA × Fail

If you want to check with other color combinations, try the [Color Contrast Checker](#).

CIELCh 20, 10.533, 7.124

Background



This preview shows how black text looks on a background with the CIELCh color 20, 10.533, 7.124.

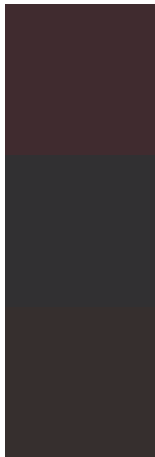


This preview shows how white text looks on a background with the CIELCh color 20, 10.533, 7.124.

Color Blindness Simulation

Color vision deficiency is a very complex topic, and I could not describe the different causes any better than Wikipedia does, so if you want to learn more, you should check out their [article about color blindness](#).

Dichromacy



Original Color

20, 10.533, 7.124

Protanopia

20, 1.447, 309.182

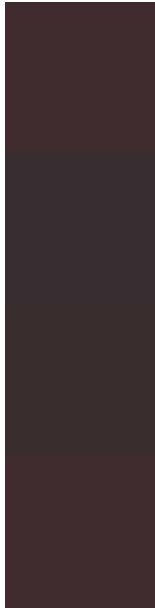
Deuteranopia

20, 3.447, 31.331



Tritanopia
20, 10.455, 10.754

Trichromacy



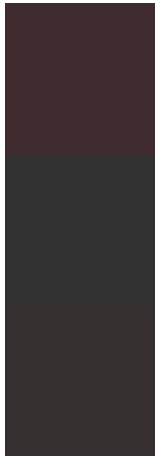
Original Color
20, 10.533, 7.124

Protanomaly
20, 4.307, 352.115

Deuteranomaly
20, 6.358, 14.701

Tritanomaly
20, 10.455, 10.754

Monochromacy



Original Color
20, 10.533, 7.124

Achromatopsia
20, 0.004, 296.813

Achromatomaly
20, 3.406, 8.633

CSS Examples

Text

The CSS property to change the color of the text to CIELCh 20, 10.533, 7.124 is called "color". The color property can be set on classes, ids or directly on the HTML element.

This example shows how text in the color `rgb(64, 43, 47)` looks like.

```
.text, #text, p{  
    color:rgb(64, 43, 47)  
}
```

If you want to add a text shadow in that color use the text-shadow property, you can generate a text shadow directly with our [CSS Text Shadow Generator](#).

Here you see how black text with a 4 pixel rgb(64, 43, 47) colored shadow looks like.

```
.shadow{ text-shadow: 4px 4px 2px rgb(64, 43, 47) }
```

Border

The CSS property to change the border of an element to CIELCh 20, 10.533, 7.124 is called "border". The border property can be set on classes, ids or directly on the HTML element.

This example shows the color as border, it can be applied via the CSS property "border" or "border-color".

```
.border, #border, table{ border:4px solid rgb(64, 43, 47) }
```

If only the border color should be changed use the property border-color.

```
.border{ border-color:rgb(64, 43, 47) }
```

If you want to add a box shadow in that color use:

Here you see how a box with a 4 pixel rgb(64, 43, 47) colored shadow looks like.

```
.boxshadow{ -moz-box-shadow:4px 4px 4px  
4px rgb(64, 43, 47); -webkit-box-  
shadow:4px 4px 4px 4px rgb(64, 43, 47);  
box-shadow:4px 4px 4px 4px rgb(64, 43, 47)  
}
```

Background

The CSS property to change the background color of an element to CIELCh 20, 10.533, 7.124 is called "background". The background property can be set on classes, ids or directly on the HTML element.

```
.background, #background, body{  
background: rgb(64, 43, 47) }
```

If only the background color should be changed can be used:

```
.background{ background-color: rgb(64, 43,  
47) }
```

This example shows the color as background, it is applied via the CSS property "background".

To optimize and compress your CSS code, you can use our [online CSS compressor and optimizer](#) based on csstidy. If you want to create a linear or radial gradient as background or border, check our [CSS Gradient Generator](#).

Hey! You found this booklet interesting? Support Converting Colors with the new Membership Option!

The pro membership hides all ads, plus gives you double the colors in the color bucket, and more awesome pro features!

[Learn more, Memberships starting at \\$2.50/m!](#)

**Follow me
on Twitter!**

@ConvertingColor