

Converting Colors

CIELCh(20, 11.237, 34.703)

Have a look what the booklet for
CIELCh(20, 11.237, 34.703) contains.

CIELCh(20, 11.178, 35.477)	3
<i>Conversions</i>	4
<i>Details</i>	6
<i>Harmonies</i>	11
<i>Previews</i>	20
<i>Color Blindness Simulation</i>	23
<i>CSS Examples</i>	26

Color

CIELCh(20, 11.178, 35.477)

Conversions

Conversions Part 1

Format	Color
Hex	402B27
RGB	64, 43, 39
RGB Percent	25%, 17%, 15%
CMY	0.7481, 0.8305, 0.8462
CMYK	0.00, 0.33, 0.39, 0.75
HSL	10°, 24%, 20%
HSV	10°, 39%, 25%
XYZ	3.3709, 2.9891, 2.3370
YIQ	48.8230, 13.8000, 3.2080

Conversions

Conversions Part 2

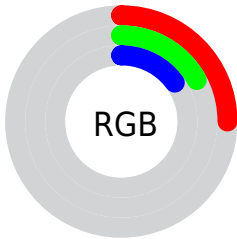
Format	Color
RYB	64, 44, 39
Decimal	4205351
CIELab	20.00, 9.10, 6.49
CIELCh	20, 11.178, 35.477
Yxy	2.9891, 0.3876, 0.3437
Android (android.graphics.Color)	4282395431 (0xFF402B27)
YUV	48.8230, -4.8427, 13.3102
Hunter-Lab	17.2889, 4.5474, 4.0877

Details

The CIELCh color **20, 11.178, 35.477** is a dark color, and the websafe version is hex **333333**. A complement of this color would be **24, 8.744, 215.901**, and the grayscale version is **20, 0.004, 296.813**.

A 20% lighter version of the original color is **40, 11.193, 36.360**, and **1, 6.390, 19.405** is the 20% darker color. If you saturate the color by 10%, you get **18, 14.560, 35.963**, and if you desaturate by 10%, it is **22, 8.009, 35.164**.

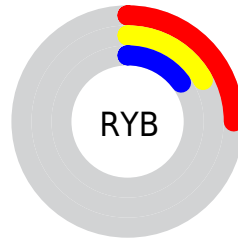
Distribution



Red (25%)

Green (17%)

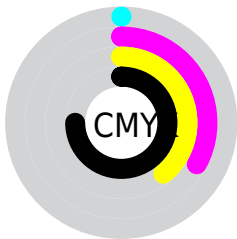
Blue (15%)



Red (25%)

Yellow (17%)

Blue (15%)

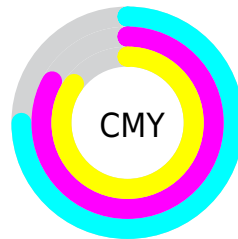


Cyan (0%)

Magenta (33%)

Yellow (39%)

Black (75%)



Cyan (75%)

Magenta (83%)

Yellow (85%)

Brightness & Saturation Gradients

These gradients show how the CIELCh color 20, 11.178, 35.477 changes by changing the brightness by 10 percent. The first figure shows a shift by +10% for each color and the second figure -10%.

Similar to the brightness gradients but the following saturation gradients show a change of the CIELCh color 20, 11.178, 35.477 by changing the saturation by 10% instead.

■ 20, 11.178, 35.477

■ 20, 11.178, 35.477

■ 100, 11.178,
35.477

■ 10, 11.178, 35.477

■ 0, 11.178, 35.477

■ 40, 11.178, 35.477

■ 50, 11.178, 35.477

■ 60, 11.178, 35.477

■ 70, 11.178, 35.477

■ 80, 11.178, 35.477

■ 90, 11.178, 35.477

■ 20, 11.178, 35.477

■ 20, 11.178, 35.477

18, 14.560, 35.963

22, 8.009, 35.164

17, 18.149, 36.639

24, 5.054, 34.970

15, 21.897, 37.481

25, 2.303, 34.843

14, 25.255, 37.098

27, 0.260, 215.912

13, 28.033, 35.772

29, 2.649, 215.136

12, 30.550, 35.167

31, 4.882, 215.222

11, 30.798, 35.159

33, 6.974, 215.372

35, 8.941, 215.557

37, 10.796,
215.764

Harmonies

Complementary

The Complementary color scheme is a pair of colors which are on the opposite of each other on the color wheel.



20, 11.178, 35.477



24, 8.744, 215.901

Rectangle

The Rectangle color scheme consists of four colors that form a rectangle on the color wheel.



20, 11.178, 35.477



20, 11.178, 85.477



20, 11.178, 215.477



20, 11.178, 265.477

Sweetspot

The Sweet Spot groups the original color and five complimentary colors.



20, 11.177, 35.483



33, 3.913, 34.888



20, 18.075, 330.929



16, 2.622, 34.892



70, 0.009, 296.813



18, 0.003, 296.813

Same Dimension

The Same Dimension uses a secret algorithm to generate beautiful new colors.



20, 11.177, 35.483



25, 17.509, 35.971



24, 11.655, 85.325



12, 1.466, 34.837



20, 45.937, 40.220



48, 91.840, 42.145

Inverse Universe

The Inverse Universe completely reimagines the original color for something new.



24, 8.744, 215.901



31, 12.690, 216.486



20, 11.487, 275.268



12, 1.399, 215.135



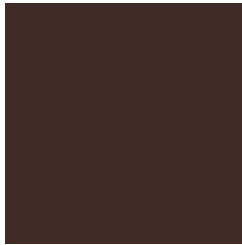
31, 21.454, 224.761



71, 39.530, 227.287

Previews

White Background



This preview shows how the CIELCh color 20, 11.178, 35.477 looks on a white background.

Color Contrast Check

Large Text (above 18pt) WCAG AA ✓ Pass

Any Text WCAG AA ✓ Pass

Large Text (above 18pt) WCAG AAA ✓ Pass

Any Text WCAG AAA ✓ Pass

Black Background



This preview shows how the CIE LCh color 20, 11.178, 35.477 looks on a black background.

Color Contrast Check

Large Text (above 18pt) WCAG AA × Fail

Any Text WCAG AA × Fail

Large Text (above 18pt) WCAG AAA × Fail

Any Text WCAG AAA × Fail

If you want to check with other color combinations, try the [Color Contrast Checker](#).

CIELCh 20, 11.178, 35.477

Background



This preview shows how black text looks on a background with the CIELCh color 20, 11.178, 35.477.

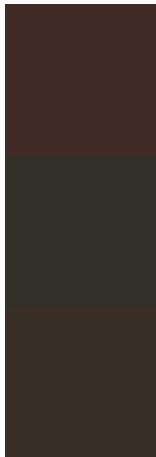


This preview shows how white text looks on a background with the CIELCh color 20, 11.178, 35.477.

Color Blindness Simulation

Color vision deficiency is a very complex topic, and I could not describe the different causes any better than Wikipedia does, so if you want to learn more, you should check out their [article about color blindness](#).

Dichromacy



Original Color

20, 11.178, 35.477

Protanopia

20, 4.323, 89.258

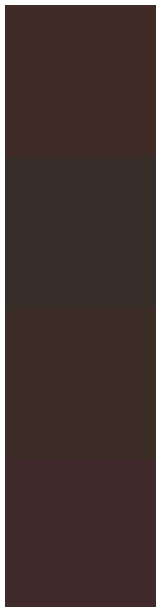
Deuteranopia

20, 7.470, 66.101



Tritanopia
20, 11.479, 12.042

Trichromacy



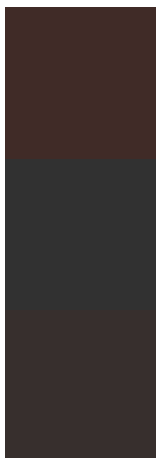
Original Color
20, 11.178, 35.477

Protanomaly
20, 6.079, 53.931

Deuteranomaly
20, 8.651, 53.437

Tritanomaly
20, 11.496, 18.727

Monochromacy



Original Color
20, 11.178, 35.477

Achromatopsia
20, 0.004, 296.813

Achromatomaly
20, 4.130, 39.177

CSS Examples

Text

The CSS property to change the color of the text to CIELCh 20, 11.178, 35.477 is called "color". The color property can be set on classes, ids or directly on the HTML element.

This example shows how text in the color `rgb(64, 43, 39)` looks like.

```
.text, #text, p{  
    color:rgb(64, 43, 39)  
}
```

If you want to add a text shadow in that color use the text-shadow property, you can generate a text shadow directly with our [CSS Text Shadow Generator](#).

Here you see how black text with a 4 pixel rgb(64, 43, 39) colored shadow looks like.

```
.shadow{ text-shadow: 4px 4px 2px rgb(64, 43, 39) }
```

Border

The CSS property to change the border of an element to CIELCh 20, 11.178, 35.477 is called "border". The border property can be set on classes, ids or directly on the HTML element.

This example shows the color as border, it can be applied via the CSS property "border" or "border-color".

```
.border, #border, table{ border:4px solid rgb(64, 43, 39) }
```

If only the border color should be changed use the property `border-color`.

```
.border{ border-color:rgb(64, 43, 39) }
```

If you want to add a box shadow in that color use:

Here you see how a box with a 4 pixel `rgb(64, 43, 39)` colored shadow looks like.

```
.boxshadow{ -moz-box-shadow:4px 4px 4px  
4px rgb(64, 43, 39); -webkit-box-  
shadow:4px 4px 4px 4px rgb(64, 43, 39);  
box-shadow:4px 4px 4px 4px rgb(64, 43, 39)  
}
```

Background

The CSS property to change the background color of an element to CIELCh 20, 11.178, 35.477 is called "background". The background property can be set on classes, ids or directly on the HTML element.

```
.background, #background, body{  
background: rgb(64, 43, 39) }
```

If only the background color should be changed can be used:

```
.background{ background-color: rgb(64, 43,  
39) }
```

This example shows the color as background, it is applied via the CSS property "background".

To optimize and compress your CSS code, you can use our [online CSS compressor and optimizer](#) based on csstidy. If you want to create a linear or radial gradient as background or border, check our [CSS Gradient Generator](#).

Hey! You found this booklet interesting? Support Converting Colors with the new Membership Option!

The pro membership hides all ads, plus gives you double the colors in the color bucket, and more awesome pro features!

[Learn more, Memberships starting at \\$2.50/m!](#)

**Follow me
on Twitter!**

@ConvertingColor