

# Converting Colors

CIELCh(20, 14.149, 23.764)

Have a look what the booklet for  
CIELCh(20, 14.149, 23.764) contains.

<b>CIELCh(20, 14.325, 25.329)</b> .....	3
<i><b>Conversions</b></i> .....	4
<i><b>Details</b></i> .....	6
<i><b>Harmonies</b></i> .....	11
<i><b>Previews</b></i> .....	20
<i><b>Color Blindness Simulation</b></i> .....	23
<i><b>CSS Examples</b></i> .....	26

**Color**

**CIELCh(20, 14.325, 25.329)**

# Conversions

## Conversions Part 1

Format	Color
Hex	452928
RGB	69, 41, 40
RGB Percent	27%, 16%, 16%
CMY	0.7300, 0.8397, 0.8436
CMYK	0.00, 0.41, 0.42, 0.73
HSL	2°, 27%, 21%
HSV	2°, 42%, 27%
XYZ	3.6132, 2.9891, 2.3826
YIQ	49.2580, 17.0090, 5.6250

# Conversions

## Conversions Part 2

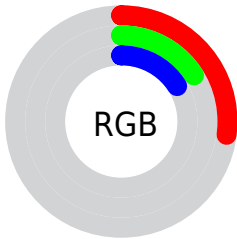
<b>Format</b>	<b>Color</b>
<b>R<sub>YB</sub></b>	69, 41, 40
Decimal	4532520
CIE Lab	20.00, 12.95, 6.13
CIE LCh	20, 14.325, 25.329
Yxy	2.9891, 0.4021, 0.3327
Android (android.graphics.Color)	4282722600 (0xFF452928)
YUV	49.2580, -4.5642, 17.3137
Hunter-Lab	17.2889, 7.0489, 3.9314

# Details

The CIELCh color **20, 14.325, 25.329** is a dark color, and the websafe version is hex **663333**. A complement of this color would be **27, 10.964, 201.124**, and the grayscale version is **20, 0.004, 296.813**.

A 20% lighter version of the original color is **40, 13.937, 26.250**, and **2, 9.450, 16.959** is the 20% darker color. If you saturate the color by 10%, you get **18, 18.286, 26.630**, and if you desaturate by 10%, it is **22, 10.560, 24.317**.

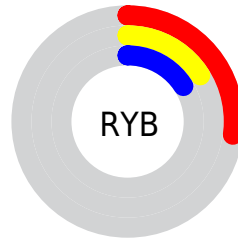
# Distribution



Red (27%)

Green (16%)

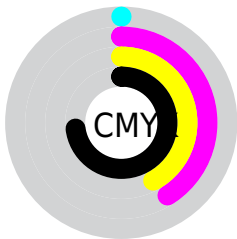
Blue (16%)



Red (27%)

Yellow (16%)

Blue (16%)

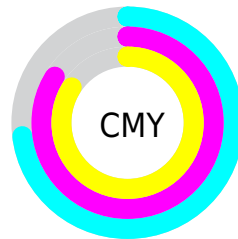


Cyan (0%)

Magenta (41%)

Yellow (42%)

Black (73%)



Cyan (73%)

Magenta (84%)

Yellow (84%)

# Brightness & Saturation Gradients

These gradients show how the CIELCh color 20, 14.325, 25.329 changes by changing the brightness by 10 percent. The first figure shows a shift by +10% for each color and the second figure -10%.

Similar to the brightness gradients but the following saturation gradients show a change of the CIELCh color 20, 14.325, 25.329 by changing the saturation by 10% instead.



■ 20, 14.325, 25.329

■ 20, 14.325, 25.329

■ 100, 14.325,  
25.329

■ 10, 14.325, 25.329

■ 0, 14.325, 25.329

■ 40, 14.325, 25.329

■ 50, 14.325, 25.329

■ 60, 14.325, 25.329

■ 70, 14.325, 25.329

■ 80, 14.325, 25.329

■ 90, 14.325, 25.329

■ 20, 14.325, 25.329

■ 20, 14.325, 25.329

18, 18.286, 26.630

22, 10.560, 24.317

16, 22.396, 28.275

24, 7.019, 23.519

15, 26.532, 30.148

26, 3.707, 22.875

13, 30.046, 30.720

29, 0.619, 22.050

12, 32.840, 30.697

31, 2.259, 202.214

11, 35.052, 30.555

33, 4.943, 201.863

36, 7.453, 201.619

38, 9.806, 201.435

40, 12.019,  
201.293

# Harmonies

# Complementary

The Complementary color scheme is a pair of colors which are on the opposite of each other on the color wheel.



20, 14.325, 25.329



27, 10.964, 201.124

# Rectangle

The Rectangle color scheme consists of four colors that form a rectangle on the color wheel.



20, 14.325, 25.329



20, 14.325, 75.329



20, 14.325, 205.329



20, 14.325, 255.329

# Sweetspot

The Sweet Spot groups the original color and five complimentary colors.



20, 14.324, 25.333



34, 4.969, 22.961



21, 22.339, 327.389



16, 3.523, 23.036



71, 0.009, 296.813



19, 0.004, 296.813



# Same Dimension

The Same Dimension uses a secret algorithm to generate beautiful new colors.



20, 14.324, 25.333



24, 22.268, 26.772



24, 12.413, 74.137



13, 1.739, 22.669



19, 48.877, 36.605



48, 95.321, 40.280





# Inverse Universe

The Inverse Universe completely reimagines the original color for something new.



27, 10.964, 201.124



34, 15.708, 200.963



22, 11.418, 265.275



14, 1.657, 202.152



37, 24.023, 201.635

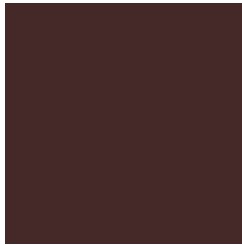


80, 43.744, 202.048



# Previews

## White Background



This preview shows how the CIE LCh color 20, 14.325, 25.329 looks on a white background.

## Color Contrast Check

Large Text (above 18pt) WCAG AA ✓ Pass

Any Text WCAG AA ✓ Pass

Large Text (above 18pt) WCAG AAA ✓ Pass

Any Text WCAG AAA ✓ Pass

# Black Background



This preview shows how the CIELCh color 20, 14.325, 25.329 looks on a black background.

## Color Contrast Check

Large Text (above 18pt) WCAG AA × Fail

Any Text WCAG AA × Fail

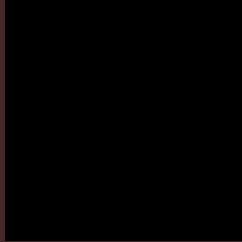
Large Text (above 18pt) WCAG AAA × Fail

Any Text WCAG AAA × Fail

If you want to check with other color combinations, try the [Color Contrast Checker](#).

# CIELCh 20, 14.325, 25.329

## Background



This preview shows how black text looks on a background with the CIELCh color 20, 14.325, 25.329.

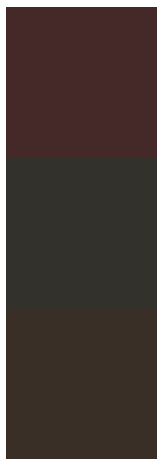


This preview shows how white text looks on a background with the CIELCh color 20, 14.325, 25.329.

# Color Blindness Simulation

Color vision deficiency is a very complex topic, and I could not describe the different causes any better than Wikipedia does, so if you want to learn more, you should check out their [article about color blindness](#).

## Dichromacy



### Original Color

20, 14.325, 25.329

### Protanopia

20, 3.512, 93.335

### Deuteranopia

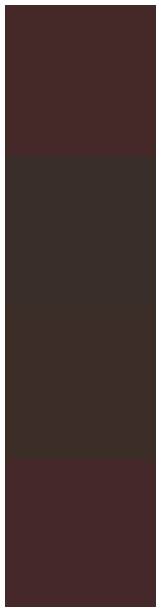
20, 7.470, 66.101



**Tritanopia**  
20, 14.557, 15.077



# Trichromacy



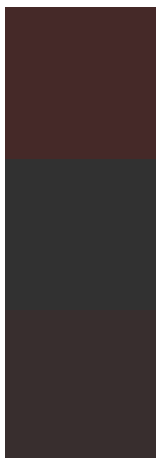
**Original Color**  
20, 14.325, 25.329

**Protanomaly**  
20, 6.146, 46.389

**Deuteranomaly**  
20, 9.215, 46.770

**Tritanomaly**  
20, 14.594, 17.704

# Monochromacy



**Original Color**  
20, 14.325, 25.329

**Achromatopsia**  
20, 0.004, 296.813

**Achromatomaly**  
20, 4.850, 20.402

# CSS Examples

## Text

The CSS property to change the color of the text to CIELCh 20, 14.325, 25.329 is called "color". The color property can be set on classes, ids or directly on the HTML element.

This example shows how text in the color `rgb(69, 41, 40)` looks like.

```
.text, #text, p{  
    color:rgb(69, 41, 40)  
}
```

If you want to add a text shadow in that color use the text-shadow property, you can generate a text shadow directly with our [CSS Text Shadow Generator](#).

Here you see how black text with a 4 pixel rgb(69, 41, 40) colored shadow looks like.

```
.shadow{ text-shadow: 4px 4px 2px rgb(69, 41, 40) }
```

## Border

The CSS property to change the border of an element to CIELCh 20, 14.325, 25.329 is called "border". The border property can be set on classes, ids or directly on the HTML element.

This example shows the color as border, it can be applied via the CSS property "border" or "border-color".

```
.border, #border, table{ border:4px solid rgb(69, 41, 40) }
```

If only the border color should be changed use the property border-color.

```
.border{ border-color:rgb(69, 41, 40) }
```

If you want to add a box shadow in that color use:

Here you see how a box with a 4 pixel rgb(69, 41, 40) colored shadow looks like.

```
.boxshadow{ -moz-box-shadow:4px 4px 4px  
4px rgb(69, 41, 40); -webkit-box-  
shadow:4px 4px 4px 4px rgb(69, 41, 40);  
box-shadow:4px 4px 4px 4px rgb(69, 41, 40)  
}
```

# Background

The CSS property to change the background color of an element to CIELCh 20, 14.325, 25.329 is called "background". The background property can be set on classes, ids or directly on the HTML element.

```
.background, #background, body{  
background: rgb(69, 41, 40) }
```

If only the background color should be changed can be used:

```
.background{ background-color: rgb(69, 41,  
40) }
```

This example shows the color as background, it is applied via the CSS property "background".

To optimize and compress your CSS code, you can use our [online CSS compressor and optimizer](#) based on csstidy. If you want to create a linear or radial gradient as background or border, check our [CSS Gradient Generator](#).

# Hey! You found this booklet interesting? Support Converting Colors with the new Membership Option!

The pro membership hides all ads, plus gives you double the colors in the color bucket, and more awesome pro features!

**[Learn more, Memberships starting at \\$2.50/m!](#)**

**Follow me  
on Twitter!**

@ConvertingColor