

Converting Colors

CIELCh(20, 14.491, 2.759)

Have a look what the booklet for
CIELCh(20, 14.491, 2.759) contains.

CIELCh(20, 14.878, 2.101)	3
<i>Conversions</i>	4
<i>Details</i>	6
<i>Harmonies</i>	11
<i>Previews</i>	20
<i>Color Blindness Simulation</i>	23
<i>CSS Examples</i>	26

Color

CIELCh(20, 14.878, 2.101)

Conversions

Conversions Part 1

Format	Color
Hex	452830
RGB	69, 40, 48
RGB Percent	27%, 16%, 19%
CMY	0.7297, 0.8434, 0.8120
CMYK	0.00, 0.42, 0.30, 0.73
HSL	343°, 27%, 21%
HSV	343°, 42%, 27%
XYZ	3.7384, 2.9891, 3.1695
YIQ	49.5830, 14.7160, 8.6360

Conversions

Conversions Part 2

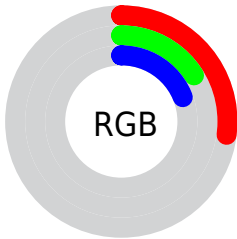
Format	Color
R_{YB}	69, 40, 48
Decimal	4532272
CIE _{Lab}	20.00, 14.87, 0.55
CIE _{LCh}	20, 14.878, 2.101
Yxy	2.9891, 0.3777, 0.3020
Android (android.graphics.Color)	4282722352 (0xFF452830)
YUV	49.5830, -0.7804, 17.0287
Hunter-Lab	17.2889, 8.3417, 1.2327

Details

The CIELCh color **20, 14.878, 2.101** is a dark color, and the websafe version is hex **663333**. A complement of this color would be **27, 13.168, 173.890**, and the grayscale version is **21, 0.004, 296.813**.

A 20% lighter version of the original color is **40, 14.590, 2.300**, and **2, 10.621, 17.229** is the 20% darker color. If you saturate the color by 10%, you get **18, 18.536, 3.685**, and if you desaturate by 10%, it is **22, 11.204, 0.773**.

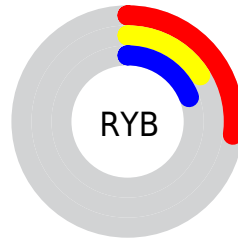
Distribution



 Red (27%)

 Green (16%)

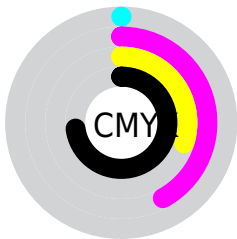
 Blue (19%)



 Red (27%)

 Yellow (16%)

 Blue (19%)

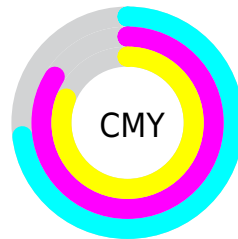


 Cyan (0%)

 Magenta (42%)

 Yellow (30%)

 Black (73%)



 Cyan (73%)

 Magenta (84%)

 Yellow (81%)

Brightness & Saturation Gradients

These gradients show how the CIELCh color 20, 14.878, 2.101 changes by changing the brightness by 10 percent. The first figure shows a shift by +10% for each color and the second figure -10%.

Similar to the brightness gradients but the following saturation gradients show a change of the CIELCh color 20, 14.878, 2.101 by changing the saturation by 10% instead.

 20, 14.878, 2.101  20, 14.878, 2.101

 100, 14.878, 2.101  10, 14.878, 2.101

 40, 14.878, 2.101  0, 14.878, 2.101

 50, 14.878, 2.101

 60, 14.878, 2.101

 70, 14.878, 2.101

 80, 14.878, 2.101

 90, 14.878, 2.101

 20, 14.878, 2.101  20, 14.878, 2.101

 18, 18.536, 3.685  22, 11.204, 0.773

16, 22.084, 5.597

24, 7.588, 359.633

15, 25.400, 7.940

26, 4.073, 358.627

13, 28.357, 10.830

29, 0.683, 357.488

12, 31.062, 14.072

31, 2.569, 177.145

11, 33.406, 15.727

33, 5.683, 176.409

36, 8.662, 175.773

38, 11.513,
175.199

40, 14.246,
174.675

Harmonies

Complementary

The Complementary color scheme is a pair of colors which are on the opposite of each other on the color wheel.



20, 14.878, 2.101



27, 13.168, 173.890

Rectangle

The Rectangle color scheme consists of four colors that form a rectangle on the color wheel.



20, 14.878, 2.101



20, 14.878, 52.101



20, 14.878, 182.101



20, 14.878, 232.101

Sweetspot

The Sweet Spot groups the original color and five complimentary colors.



20, 14.877, 2.104



34, 5.456, 358.768



20, 21.498, 317.851



16, 3.859, 358.888



71, 0.009, 296.813



19, 0.004, 296.813

Same Dimension

The Same Dimension uses a secret algorithm to generate beautiful new colors.



20, 14.877, 2.104



25, 22.062, 3.675



22, 12.521, 40.972



13, 1.925, 358.298



19, 43.613, 19.542



48, 81.712, 24.092

Inverse Universe

The Inverse Universe completely reimagines the original color for something new.



20, 14.877, 2.104



25, 22.062, 3.675



25, 9.627, 223.782



13, 1.925, 358.298



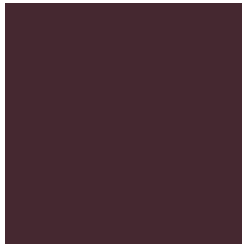
19, 43.613, 19.542



48, 81.712, 24.092

Previews

White Background



This preview shows how the CIELCh color 20, 14.878, 2.101 looks on a white background.

Color Contrast Check

Large Text (above 18pt) WCAG AA ✓ Pass

Any Text WCAG AA ✓ Pass

Large Text (above 18pt) WCAG AAA ✓ Pass

Any Text WCAG AAA ✓ Pass

Black Background



This preview shows how the CIE LCh color 20, 14.878, 2.101 looks on a black background.

Color Contrast Check

Large Text (above 18pt) WCAG AA × Fail

Any Text WCAG AA × Fail

Large Text (above 18pt) WCAG AAA × Fail

Any Text WCAG AAA × Fail

If you want to check with other color combinations, try the [Color Contrast Checker](#).

CIELCh 20, 14.878, 2.101

Background



This preview shows how black text looks on a background with the CIELCh color 20, 14.878, 2.101.



This preview shows how white text looks on a background with the CIELCh color 20, 14.878, 2.101.

Color Blindness Simulation

Color vision deficiency is a very complex topic, and I could not describe the different causes any better than Wikipedia does, so if you want to learn more, you should check out their [article about color blindness](#).

Dichromacy



Original Color

20, 14.878, 2.101

Protanopia

20, 3.406, 290.993

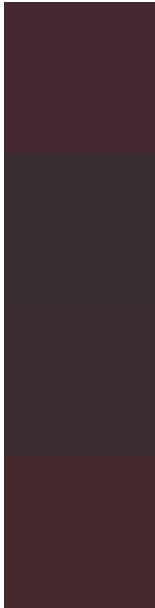
Deuteranopia

20, 3.358, 20.052



Tritanopia
20, 14.007, 14.585

Trichromacy



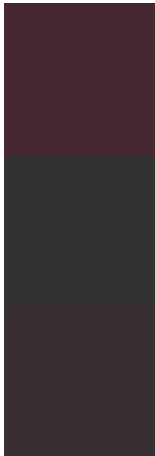
Original Color
20, 14.878, 2.101

Protanomaly
20, 6.583, 342.641

Deuteranomaly
20, 7.522, 5.498

Tritanomaly
20, 14.014, 11.854

Monochromacy



Original Color
20, 14.878, 2.101

Achromatopsia
21, 0.004, 296.813

Achromatomaly
20, 5.620, 359.501

CSS Examples

Text

The CSS property to change the color of the text to CIELCh 20, 14.878, 2.101 is called "color". The color property can be set on classes, ids or directly on the HTML element.

This example shows how text in the color `rgb(69, 40, 48)` looks like.

```
.text, #text, p{  
    color:rgb(69, 40, 48)  
}
```

If you want to add a text shadow in that color use the text-shadow property, you can generate a text shadow directly with our [CSS Text Shadow Generator](#).

Here you see how black text with a 4 pixel rgb(69, 40, 48) colored shadow looks like.

```
.shadow{ text-shadow: 4px 4px 2px rgb(69, 40, 48) }
```

Border

The CSS property to change the border of an element to CIELCh 20, 14.878, 2.101 is called "border". The border property can be set on classes, ids or directly on the HTML element.

This example shows the color as border, it can be applied via the CSS property "border" or "border-color".

```
.border, #border, table{ border:4px solid rgb(69, 40, 48) }
```

If only the border color should be changed use the property `border-color`.

```
.border{ border-color:rgb(69, 40, 48) }
```

If you want to add a box shadow in that color use:

Here you see how a box with a 4 pixel `rgb(69, 40, 48)` colored shadow looks like.

```
.boxshadow{ -moz-box-shadow:4px 4px 4px  
4px rgb(69, 40, 48); -webkit-box-  
shadow:4px 4px 4px 4px rgb(69, 40, 48);  
box-shadow:4px 4px 4px 4px rgb(69, 40, 48)  
}
```

Background

The CSS property to change the background color of an element to CIELCh 20, 14.878, 2.101 is called "background". The background property can be set on classes, ids or directly on the HTML element.

```
.background, #background, body{  
background: rgb(69, 40, 48) }
```

If only the background color should be changed can be used:

```
.background{ background-color: rgb(69, 40,  
48) }
```

This example shows the color as background, it is applied via the CSS property "background".

To optimize and compress your CSS code, you can use our [online CSS compressor and optimizer](#) based on csstidy. If you want to create a linear or radial gradient as background or border, check our [CSS Gradient Generator](#).

Hey! You found this booklet interesting? Support Converting Colors with the new Membership Option!

The pro membership hides all ads, plus gives you double the colors in the color bucket, and more awesome pro features!

[Learn more, Memberships starting at \\$2.50/m!](#)

**Follow me
on Twitter!**

@ConvertingColor