

Converting Colors

CIELCh(20, 15.484, 36.578)

Have a look what the booklet for
CIELCh(20, 15.484, 36.578) contains.

CIELCh(20, 15.442, 37.449)	3
<i>Conversions</i>	4
<i>Details</i>	6
<i>Harmonies</i>	11
<i>Previews</i>	20
<i>Color Blindness Simulation</i>	23
<i>CSS Examples</i>	26

Color

CIELCh(20, 15.442, 37.449)

Conversions

Conversions Part 1

Format	Color
Hex	452923
RGB	69, 41, 35
RGB Percent	27%, 16%, 14%
CMY	0.7288, 0.8386, 0.8622
CMYK	0.00, 0.41, 0.49, 0.73
HSL	11°, 33%, 20%
HSV	11°, 49%, 27%
XYZ	3.5690, 2.9891, 1.9897
YIQ	48.6880, 18.6140, 4.0700

Conversions

Conversions Part 2

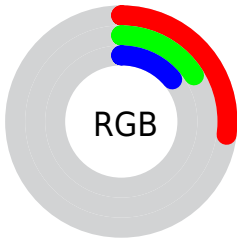
Format	Color
R_{YB}	69, 42, 35
Decimal	4532515
CIE _{Lab}	20.00, 12.26, 9.39
CIE _{LCh}	20, 15.442, 37.449
Yxy	2.9891, 0.4175, 0.3497
Android (android.graphics.Color)	4282722595 (0xFF452923)
YUV	48.6880, -6.7482, 17.8136
Hunter-Lab	17.2889, 6.5924, 5.2787

Details

The CIELCh color **20, 15.442, 37.449** is a dark color, and the websafe version is hex **663333**. A complement of this color would be **25, 11.150, 218.811**, and the grayscale version is **20, 0.004, 296.813**.

A 20% lighter version of the original color is **40, 15.529, 39.250**, and **2, 8.895, 16.806** is the 20% darker color. If you saturate the color by 10%, you get **18, 19.242, 38.045**, and if you desaturate by 10%, it is **22, 11.861, 37.051**.

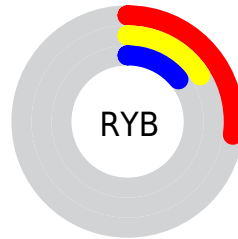
Distribution



Red (27%)

Green (16%)

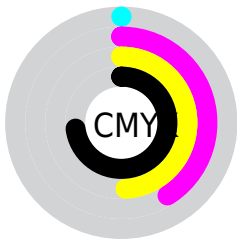
Blue (14%)



Red (27%)

Yellow (16%)

Blue (14%)

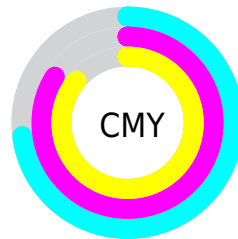


Cyan (0%)

Magenta (41%)

Yellow (49%)

Black (73%)



Cyan (73%)

Magenta (84%)

Yellow (86%)


Brightness & Saturation Gradients

These gradients show how the CIELCh color 20, 15.442, 37.449 changes by changing the brightness by 10 percent. The first figure shows a shift by +10% for each color and the second figure -10%.

Similar to the brightness gradients but the following saturation gradients show a change of the CIELCh color 20, 15.442, 37.449 by changing the saturation by 10% instead.

 20, 15.442, 37.449

 20, 15.442, 37.449

 100, 15.442,
37.449

 10, 15.442, 37.449

 40, 15.442, 37.449

 0, 15.442, 37.449

 50, 15.442, 37.449

 60, 15.442, 37.449

 70, 15.442, 37.449

 80, 15.442, 37.449

 90, 15.442, 37.449

 20, 15.442, 37.449

 20, 15.442, 37.449

■ 18, 19.242, 38.045

■ 22, 11.861, 37.051

■ 17, 23.234, 38.847

■ 24, 8.513, 36.805

■ 15, 26.983, 38.912

■ 26, 5.393, 36.682

■ 14, 30.012, 37.730

■ 28, 2.490, 36.624

■ 13, 32.734, 37.115

■ 30, 0.212, 218.021

■ 13, 32.943, 37.105

■ 32, 2.729, 217.043

■ 34, 5.081, 217.188

■ 36, 7.284, 217.396

■ 38, 9.355, 217.637

Harmonies

Complementary

The Complementary color scheme is a pair of colors which are on the opposite of each other on the color wheel.



20, 15.442, 37.449



25, 11.150, 218.811

Rectangle

The Rectangle color scheme consists of four colors that form a rectangle on the color wheel.



20, 15.442, 37.449



20, 15.442, 87.449



20, 15.442, 217.449



20, 15.442, 267.449

Sweetspot

The Sweet Spot groups the original color and five complimentary colors.



20, 15.441, 37.454



34, 5.140, 36.658



19, 23.754, 332.141



16, 3.550, 36.664



71, 0.009, 296.813



19, 0.004, 296.813

Same Dimension

The Same Dimension uses a secret algorithm to generate beautiful new colors.



20, 15.441, 37.454



24, 23.874, 38.199



25, 15.985, 85.399



13, 1.546, 36.620



20, 46.776, 41.089



49, 92.103, 42.536

Inverse Universe

The Inverse Universe completely reimagines the original color for something new.



25, 11.150, 218.811



31, 15.612, 219.995



19, 15.880, 278.687



13, 1.474, 217.033



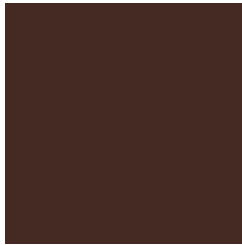
32, 21.827, 228.239



70, 39.934, 230.954

Previews

White Background



This preview shows how the CIELCh color 20, 15.442, 37.449 looks on a white background.

Color Contrast Check

Large Text (above 18pt) WCAG AA ✓ Pass

Any Text WCAG AA ✓ Pass

Large Text (above 18pt) WCAG AAA ✓ Pass

Any Text WCAG AAA ✓ Pass

Black Background



This preview shows how the CIELCh color 20, 15.442, 37.449 looks on a black background.

Color Contrast Check

Large Text (above 18pt) WCAG AA × Fail

Any Text WCAG AA × Fail

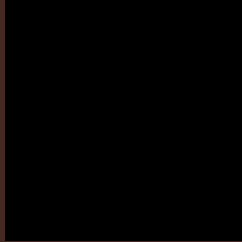
Large Text (above 18pt) WCAG AAA × Fail

Any Text WCAG AAA × Fail

If you want to check with other color combinations, try the [Color Contrast Checker](#).

CIELCh 20, 15.442, 37.449

Background



This preview shows how black text looks on a background with the CIELCh color 20, 15.442, 37.449.

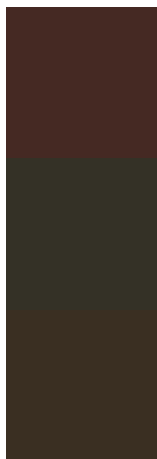


This preview shows how white text looks on a background with the CIELCh color 20, 15.442, 37.449.

Color Blindness Simulation

Color vision deficiency is a very complex topic, and I could not describe the different causes any better than Wikipedia does, so if you want to learn more, you should check out their [article about color blindness](#).

Dichromacy



Original Color

20, 15.442, 37.449

Protanopia

20, 7.573, 96.881

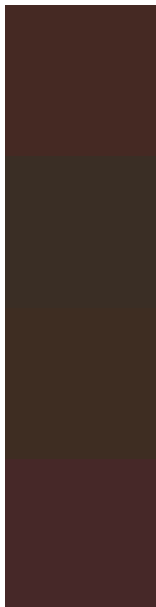
Deuteranopia

20, 10.581, 75.194



Tritanopia
20, 15.057, 15.478

Trichromacy



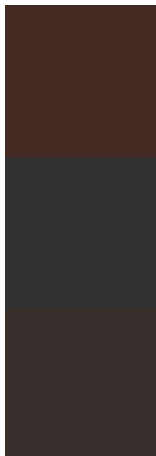
Original Color
20, 15.442, 37.449

Protanomaly
20, 8.758, 63.918

Deuteranomaly
20, 11.805, 59.243

Tritanomaly
20, 15.284, 23.008

Monochromacy



Original Color
20, 15.442, 37.449

Achromatopsia
20, 0.004, 296.813

Achromatomaly
20, 5.106, 35.671

CSS Examples

Text

The CSS property to change the color of the text to CIELCh 20, 15.442, 37.449 is called "color". The color property can be set on classes, ids or directly on the HTML element.

This example shows how text in the color `rgb(69, 41, 35)` looks like.

```
.text, #text, p{  
    color:rgb(69, 41, 35)  
}
```

If you want to add a text shadow in that color use the text-shadow property, you can generate a text shadow directly with our [CSS Text Shadow Generator](#).

Here you see how black text with a 4 pixel rgb(69, 41, 35) colored shadow looks like.

```
.shadow{ text-shadow: 4px 4px 2px rgb(69, 41, 35) }
```

Border

The CSS property to change the border of an element to CIELCh 20, 15.442, 37.449 is called "border". The border property can be set on classes, ids or directly on the HTML element.

This example shows the color as border, it can be applied via the CSS property "border" or "border-color".

```
.border, #border, table{ border:4px solid rgb(69, 41, 35) }
```

If only the border color should be changed use the property `border-color`.

```
.border{ border-color:rgb(69, 41, 35) }
```

If you want to add a box shadow in that color use:

Here you see how a box with a 4 pixel `rgb(69, 41, 35)` colored shadow looks like.

```
.boxshadow{ -moz-box-shadow:4px 4px 4px  
4px rgb(69, 41, 35); -webkit-box-  
shadow:4px 4px 4px 4px rgb(69, 41, 35);  
box-shadow:4px 4px 4px 4px rgb(69, 41, 35)  
}
```

Background

The CSS property to change the background color of an element to CIELCh 20, 15.442, 37.449 is called "background". The background property can be set on classes, ids or directly on the HTML element.

```
.background, #background, body{  
background: rgb(69, 41, 35) }
```

If only the background color should be changed can be used:

```
.background{ background-color: rgb(69, 41,  
35) }
```

This example shows the color as background, it is applied via the CSS property "background".

To optimize and compress your CSS code, you can use our [online CSS compressor and optimizer](#) based on csstidy. If you want to create a linear or radial gradient as background or border, check our [CSS Gradient Generator](#).

Hey! You found this booklet
interesting? Support Converting
Colors with the new Membership
Option!

The pro membership hides all ads, plus gives you
double the colors in the color bucket, and more
awesome pro features!

[Learn more, Memberships starting at \\$2.50/m!](#)

**Follow me
on Twitter!**

@ConvertingColor