

Converting Colors

CIELCh(20, 16.523, 21.713)

Have a look what the booklet for
CIELCh(20, 16.523, 21.713) contains.

CIELCh(20, 16.772, 21.218)	3
<i>Conversions</i>	4
<i>Details</i>	6
<i>Harmonies</i>	11
<i>Previews</i>	20
<i>Color Blindness Simulation</i>	23
<i>CSS Examples</i>	26

Color

CIELCh(20, 16.772, 21.218)

Conversions

Conversions Part 1

Format	Color
Hex	482728
RGB	72, 39, 40
RGB Percent	28%, 15%, 16%
CMY	0.7174, 0.8468, 0.8429
CMYK	0.00, 0.46, 0.44, 0.72
HSL	358°, 30%, 22%
HSV	358°, 46%, 28%
XYZ	3.7892, 2.9891, 2.3901
YIQ	48.9810, 19.3470, 7.3070

Conversions

Conversions Part 2

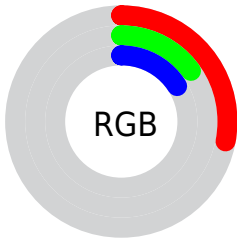
Format	Color
R_{YB}	72, 39, 40
Decimal	4728616
CIE Lab	20.00, 15.64, 6.07
CIE LCh	20, 16.772, 21.218
Yxy	2.9891, 0.4133, 0.3260
Android (android.graphics.Color)	4282918696 (0xFF482728)
YUV	48.9810, -4.4276, 20.1877
Hunter-Lab	17.2889, 8.8664, 3.9058

Details

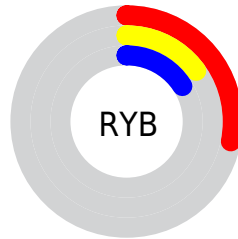
The CIELCh color **20, 16.772, 21.218** is a dark color, and the websafe version is hex **663333**. A complement of this color would be **28, 12.755, 194.528**, and the grayscale version is **20, 0.004, 296.813**.

A 20% lighter version of the original color is **40, 16.570, 21.789**, and **2, 11.236, 17.348** is the 20% darker color. If you saturate the color by 10%, you get **18, 20.948, 22.927**, and if you desaturate by 10%, it is **22, 12.736, 19.865**.

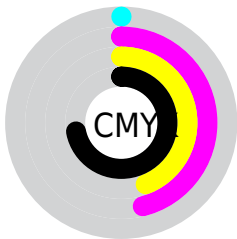
Distribution



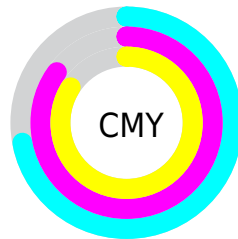
- Red (28%)
- Green (15%)
- Blue (16%)



- Red (28%)
- Yellow (15%)
- Blue (16%)



- Cyan (0%)
- Magenta (46%)
- Yellow (44%)
- Black (72%)



- Cyan (72%)
- Magenta (85%)
- Yellow (84%)


Brightness & Saturation Gradients

These gradients show how the CIELCh color 20, 16.772, 21.218 changes by changing the brightness by 10 percent. The first figure shows a shift by +10% for each color and the second figure -10%.

Similar to the brightness gradients but the following saturation gradients show a change of the CIELCh color 20, 16.772, 21.218 by changing the saturation by 10% instead.

 20, 16.772, 21.218

 20, 16.772, 21.218

 100, 16.772,
21.218

 10, 16.772, 21.218

 0, 16.772, 21.218

 40, 16.772, 21.218

 50, 16.772, 21.218

 60, 16.772, 21.218

 70, 16.772, 21.218

 80, 16.772, 21.218

 90, 16.772, 21.218

 20, 16.772, 21.218

 20, 16.772, 21.218

18, 20.948, 22.927

22, 12.736, 19.865

16, 25.187, 25.064

24, 8.893, 18.780

15, 29.328, 27.503

27, 5.269, 17.895

13, 32.721, 28.771

29, 1.870, 17.103

12, 35.590, 28.912

32, 1.310, 196.872

12, 36.846, 28.808

34, 4.283, 196.256

37, 7.068, 195.833

39, 9.682, 195.486

42, 12.142,
195.192

Harmonies

Complementary

The Complementary color scheme is a pair of colors which are on the opposite of each other on the color wheel.



20, 16.772, 21.218



28, 12.755, 194.528

Rectangle

The Rectangle color scheme consists of four colors that form a rectangle on the color wheel.



20, 16.772, 21.218



20, 16.772, 71.218



20, 16.772, 201.218



20, 16.772, 251.218

Sweetspot

The Sweet Spot groups the original color and five complimentary colors.



20, 16.771, 21.222



36, 5.814, 17.796



21, 25.513, 325.635



17, 4.064, 17.891



72, 0.009, 296.813



20, 0.004, 296.813

Same Dimension

The Same Dimension uses a secret algorithm to generate beautiful new colors.



20, 16.771, 21.222



25, 25.896, 23.198



24, 13.786, 66.888



13, 1.800, 17.330



19, 48.782, 34.432



47, 94.524, 39.050

Inverse Universe

The Inverse Universe completely reimagines the original color for something new.



20, 16.771, 21.222



25, 25.896, 23.198



23, 11.955, 258.679



13, 1.800, 17.330



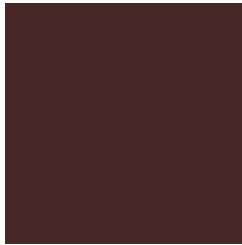
19, 48.782, 34.432



47, 94.524, 39.050

Previews

White Background



This preview shows how the CIELCh color 20, 16.772, 21.218 looks on a white background.

Color Contrast Check

Large Text (above 18pt) WCAG AA ✓ Pass

Any Text WCAG AA ✓ Pass

Large Text (above 18pt) WCAG AAA ✓ Pass

Any Text WCAG AAA ✓ Pass

Black Background



This preview shows how the CIELCh color 20, 16.772, 21.218 looks on a black background.

Color Contrast Check

Large Text (above 18pt) WCAG AA × Fail

Any Text WCAG AA × Fail

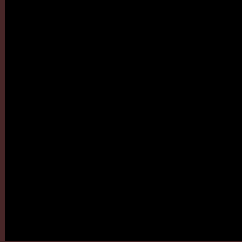
Large Text (above 18pt) WCAG AAA × Fail

Any Text WCAG AAA × Fail

If you want to check with other color combinations, try the [Color Contrast Checker](#).

CIELCh 20, 16.772, 21.218

Background



This preview shows how black text looks on a background with the CIELCh color 20, 16.772, 21.218.

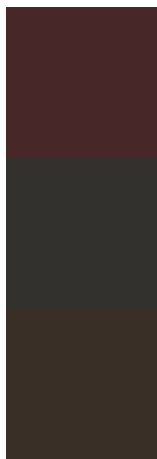


This preview shows how white text looks on a background with the CIELCh color 20, 16.772, 21.218.

Color Blindness Simulation

Color vision deficiency is a very complex topic, and I could not describe the different causes any better than Wikipedia does, so if you want to learn more, you should check out their [article about color blindness](#).

Dichromacy



Original Color

20, 16.772, 21.218

Protanopia

20, 2.866, 89.873

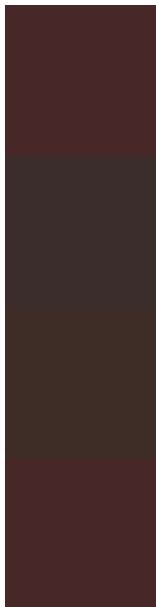
Deuteranopia

20, 7.470, 66.101



Tritanopia
20, 16.614, 16.662

Trichromacy



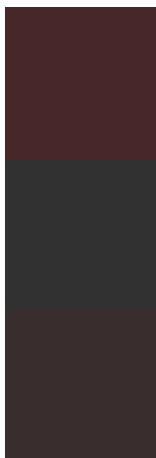
Original Color
20, 16.772, 21.218

Protanomaly
20, 7.111, 31.724

Deuteranomaly
20, 9.896, 40.993

Tritanomaly
20, 16.678, 18.951

Monochromacy



Original Color
20, 16.772, 21.218

Achromatopsia
20, 0.004, 296.813

Achromatomaly
20, 5.864, 14.063

CSS Examples

Text

The CSS property to change the color of the text to CIELCh 20, 16.772, 21.218 is called "color". The color property can be set on classes, ids or directly on the HTML element.

This example shows how text in the color `rgb(72, 39, 40)` looks like.

```
.text, #text, p{  
    color:rgb(72, 39, 40)  
}
```

If you want to add a text shadow in that color use the text-shadow property, you can generate a text shadow directly with our [CSS Text Shadow Generator](#).

Here you see how black text with a 4 pixel rgb(72, 39, 40) colored shadow looks like.

```
.shadow{ text-shadow: 4px 4px 2px rgb(72, 39, 40) }
```

Border

The CSS property to change the border of an element to CIELCh 20, 16.772, 21.218 is called "border". The border property can be set on classes, ids or directly on the HTML element.

This example shows the color as border, it can be applied via the CSS property "border" or "border-color".

```
.border, #border, table{ border:4px solid rgb(72, 39, 40) }
```

If only the border color should be changed use the property `border-color`.

```
.border{ border-color:rgb(72, 39, 40) }
```

If you want to add a box shadow in that color use:

Here you see how a box with a 4 pixel `rgb(72, 39, 40)` colored shadow looks like.

```
.boxshadow{ -moz-box-shadow:4px 4px 4px  
4px rgb(72, 39, 40); -webkit-box-  
shadow:4px 4px 4px 4px rgb(72, 39, 40);  
box-shadow:4px 4px 4px 4px rgb(72, 39, 40)  
}
```

Background

The CSS property to change the background color of an element to CIELCh 20, 16.772, 21.218 is called "background". The background property can be set on classes, ids or directly on the HTML element.

```
.background, #background, body{  
background: rgb(72, 39, 40) }
```

If only the background color should be changed can be used:

```
.background{ background-color: rgb(72, 39,  
40) }
```

This example shows the color as background, it is applied via the CSS property "background".

To optimize and compress your CSS code, you can use our [online CSS compressor and optimizer](#) based on csstidy. If you want to create a linear or radial gradient as background or border, check our [CSS Gradient Generator](#).

Hey! You found this booklet interesting? Support Converting Colors with the new Membership Option!

The pro membership hides all ads, plus gives you double the colors in the color bucket, and more awesome pro features!

[Learn more, Memberships starting at \\$2.50/m!](#)

**Follow me
on Twitter!**

@ConvertingColor