

Converting Colors

CIELCh(20, 18.388, 31.104)

Have a look what the booklet for
CIELCh(20, 18.388, 31.104) contains.

CIELCh(20, 18.178, 31.807)	3
<i>Conversions</i>	4
<i>Details</i>	6
<i>Harmonies</i>	11
<i>Previews</i>	20
<i>Color Blindness Simulation</i>	23
<i>CSS Examples</i>	26

Color

CIELCh(20, 18.178, 31.807)

Conversions

Conversions Part 1

Format	Color
Hex	492723
RGB	73, 39, 35
RGB Percent	29%, 15%, 14%
CMY	0.7137, 0.8470, 0.8627
CMYK	0.00, 0.47, 0.52, 0.71
HSL	6°, 35%, 21%
HSV	6°, 52%, 29%
XYZ	3.7768, 2.9891, 1.9681
YIQ	48.7100, 21.5480, 5.9640

Conversions

Conversions Part 2

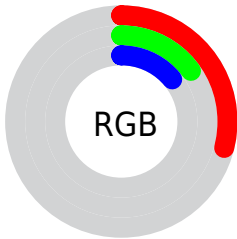
Format	Color
R_YB	73, 39, 35
Decimal	4794147
CIE Lab	20.00, 15.45, 9.58
CIE LCh	20, 18.178, 31.807
Yxy	2.9891, 0.4324, 0.3422
Android (android.graphics.Color)	4282984227 (0xFF492723)
YUV	48.7100, -6.7590, 21.3023
Hunter-Lab	17.2889, 8.7381, 5.3528

Details

The CIELCh color **20, 18.178, 31.807** is a dark color, and the websafe version is hex **663333**. A complement of this color would be **27, 12.738, 209.448**, and the grayscale version is **20, 0.004, 296.813**.

A 20% lighter version of the original color is **40, 18.344, 33.092**, and **2, 11.236, 17.348** is the 20% darker color. If you saturate the color by 10%, you get **18, 22.372, 32.994**, and if you desaturate by 10%, it is **22, 14.185, 30.902**.

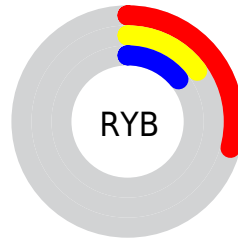
Distribution



Red (29%)

Green (15%)

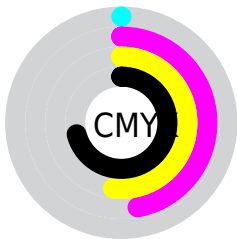
Blue (14%)



Red (29%)

Yellow (15%)

Blue (14%)

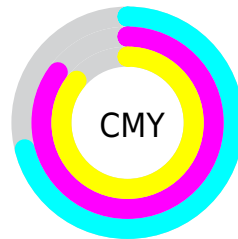


Cyan (0%)

Magenta (47%)

Yellow (52%)

Black (71%)



Cyan (71%)

Magenta (85%)

Yellow (86%)

Brightness & Saturation Gradients

These gradients show how the CIELCh color 20, 18.178, 31.807 changes by changing the brightness by 10 percent. The first figure shows a shift by +10% for each color and the second figure -10%.

Similar to the brightness gradients but the following saturation gradients show a change of the CIELCh color 20, 18.178, 31.807 by changing the saturation by 10% instead.

■ 20, 18.178, 31.807

■ 20, 18.178, 31.807

■ 100, 18.178,
31.807

■ 10, 18.178, 31.807

■ 0, 18.178, 31.807

■ 40, 18.178, 31.807

■ 50, 18.178, 31.807

■ 60, 18.178, 31.807

■ 70, 18.178, 31.807

■ 80, 18.178, 31.807

■ 90, 18.178, 31.807

■ 20, 18.178, 31.807

■ 20, 18.178, 31.807

18, 22.372, 32.994

22, 14.185, 30.902

17, 26.707, 34.476

24, 10.426, 30.220

15, 30.576, 34.951

26, 6.913, 29.717

14, 33.642, 34.527

28, 3.641, 29.338

13, 35.816, 34.719

31, 0.598, 28.730

33, 2.233, 209.162

35, 4.870, 209.023

37, 7.333, 208.983

40, 9.641, 208.992

Harmonies

Complementary

The Complementary color scheme is a pair of colors which are on the opposite of each other on the color wheel.



20, 18.178, 31.807



27, 12.738, 209.448

Rectangle

The Rectangle color scheme consists of four colors that form a rectangle on the color wheel.



20, 18.178, 31.807



20, 18.178, 81.807



20, 18.178, 211.807



20, 18.178, 261.807

Sweetspot

The Sweet Spot groups the original color and five complimentary colors.



20, 18.177, 31.811



36, 6.079, 29.500



20, 27.366, 329.979



17, 4.154, 29.536



72, 0.009, 296.813



20, 0.004, 296.813

Same Dimension

The Same Dimension uses a secret algorithm to generate beautiful new colors.



20, 18.177, 31.811



24, 27.838, 33.308



25, 16.973, 79.192



13, 1.631, 29.214



20, 47.879, 38.613



48, 94.129, 41.075

Inverse Universe

The Inverse Universe completely reimagines the original color for something new.



27, 12.738, 209.448



34, 17.601, 210.023



21, 16.112, 273.960



14, 1.553, 209.133



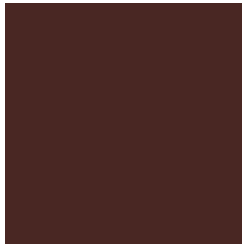
34, 22.386, 214.052



75, 40.672, 215.551

Previews

White Background



This preview shows how the CIE LCh color 20, 18.178, 31.807 looks on a white background.

Color Contrast Check

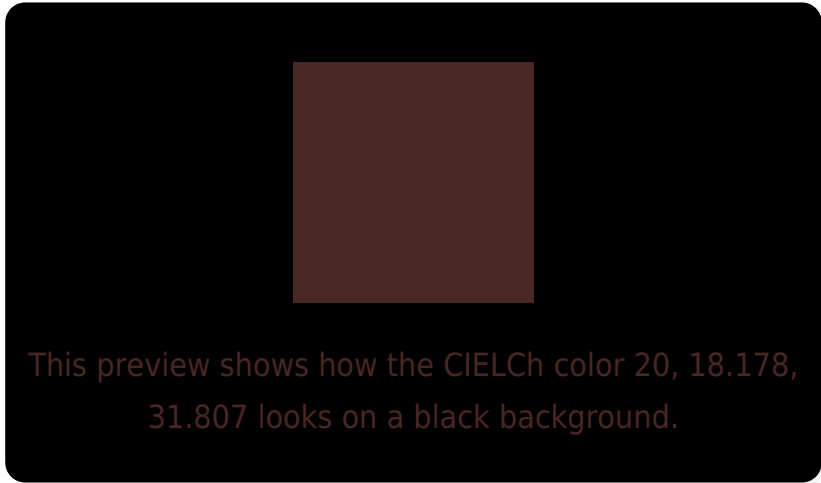
Large Text (above 18pt) WCAG AA ✓ Pass

Any Text WCAG AA ✓ Pass

Large Text (above 18pt) WCAG AAA ✓ Pass

Any Text WCAG AAA ✓ Pass

Black Background



Color Contrast Check

Large Text (above 18pt) WCAG AA × Fail

Any Text WCAG AA × Fail

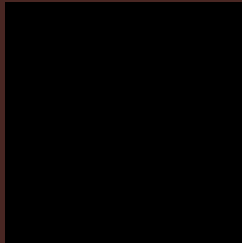
Large Text (above 18pt) WCAG AAA × Fail

Any Text WCAG AAA × Fail

If you want to check with other color combinations, try the [Color Contrast Checker](#).

CIELCh 20, 18.178, 31.807

Background



This preview shows how black text looks on a background with the CIELCh color 20, 18.178, 31.807.

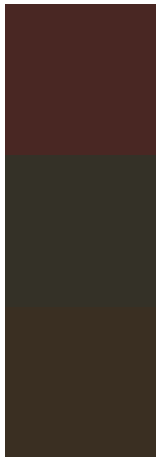


This preview shows how white text looks on a background with the CIELCh color 20, 18.178, 31.807.

Color Blindness Simulation

Color vision deficiency is a very complex topic, and I could not describe the different causes any better than Wikipedia does, so if you want to learn more, you should check out their [article about color blindness](#).

Dichromacy



Original Color

20, 18.178, 31.807

Protanopia

20, 6.914, 96.002

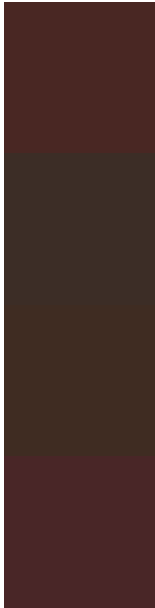
Deuteranopia

20, 10.581, 75.194



Tritanopia
20, 17.676, 17.418

Trichromacy



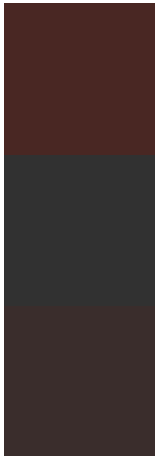
Original Color
20, 18.178, 31.807

Protanomaly
20, 9.136, 51.680

Deuteranomaly
20, 12.273, 54.054

Tritanomaly
20, 17.859, 21.692

Monochromacy



Original Color
20, 18.178, 31.807

Achromatopsia
20, 0.004, 296.813

Achromatomaly
20, 6.454, 26.726

CSS Examples

Text

The CSS property to change the color of the text to CIELCh 20, 18.178, 31.807 is called "color". The color property can be set on classes, ids or directly on the HTML element.

This example shows how text in the color `rgb(73, 39, 35)` looks like.

```
.text, #text, p{  
    color:rgb(73, 39, 35)  
}
```

If you want to add a text shadow in that color use the text-shadow property, you can generate a text shadow directly with our [CSS Text Shadow Generator](#).

Here you see how black text with a 4 pixel rgb(73, 39, 35) colored shadow looks like.

```
.shadow{ text-shadow: 4px 4px 2px rgb(73, 39, 35) }
```

Border

The CSS property to change the border of an element to CIELCh 20, 18.178, 31.807 is called "border". The border property can be set on classes, ids or directly on the HTML element.

This example shows the color as border, it can be applied via the CSS property "border" or "border-color".

```
.border, #border, table{ border:4px solid rgb(73, 39, 35) }
```

If only the border color should be changed use the property `border-color`.

```
.border{ border-color:rgb(73, 39, 35) }
```

If you want to add a box shadow in that color use:

Here you see how a box with a 4 pixel `rgb(73, 39, 35)` colored shadow looks like.

```
.boxshadow{ -moz-box-shadow:4px 4px 4px  
4px rgb(73, 39, 35); -webkit-box-  
shadow:4px 4px 4px 4px rgb(73, 39, 35);  
box-shadow:4px 4px 4px 4px rgb(73, 39, 35)  
}
```

Background

The CSS property to change the background color of an element to CIELCh 20, 18.178, 31.807 is called "background". The background property can be set on classes, ids or directly on the HTML element.

```
.background, #background, body{  
background: rgb(73, 39, 35) }
```

If only the background color should be changed can be used:

```
.background{ background-color: rgb(73, 39,  
35) }
```

This example shows the color as background, it is applied via the CSS property "background".

To optimize and compress your CSS code, you can use our [online CSS compressor and optimizer](#) based on csstidy. If you want to create a linear or radial gradient as background or border, check our [CSS Gradient Generator](#).

Hey! You found this booklet
interesting? Support Converting
Colors with the new Membership
Option!

The pro membership hides all ads, plus gives you
double the colors in the color bucket, and more
awesome pro features!

[Learn more, Memberships starting at \\$2.50/m!](#)

**Follow me
on Twitter!**

@ConvertingColor