

Converting Colors

CIELCh(20, 19.055, 39.522)

Have a look what the booklet for
CIELCh(20, 19.055, 39.522) contains.

CIELCh(20, 19.321, 39.127)	3
<i>Conversions</i>	4
<i>Details</i>	6
<i>Harmonies</i>	11
<i>Previews</i>	20
<i>Color Blindness Simulation</i>	23
<i>CSS Examples</i>	26

Color

CIELCh(20, 19.321, 39.127)

Conversions

Conversions Part 1

Format	Color
Hex	49271F
RGB	73, 39, 31
RGB Percent	29%, 15%, 12%
CMY	0.7129, 0.8463, 0.8777
CMYK	0.00, 0.46, 0.57, 0.71
HSL	11°, 40%, 20%
HSV	11°, 57%, 29%
XYZ	3.7463, 2.9891, 1.6887
YIQ	48.2540, 22.8320, 4.7200

Conversions

Conversions Part 2

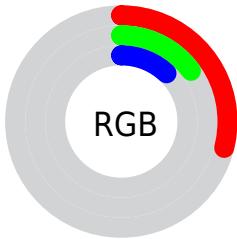
Format	Color
R_{YB}	73, 41, 31
Decimal	4794143
CIE _{Lab}	20.00, 14.99, 12.19
CIE _{LCh}	20, 19.321, 39.127
Yxy	2.9891, 0.4447, 0.3548
Android (android.graphics.Color)	4282984223 (0xFF49271F)
YUV	48.2540, -8.5062, 21.7022
Hunter-Lab	17.2889, 8.4237, 6.3109

Details

The CIELCh color **20, 19.321, 39.127** is a dark color, and the websafe version is hex **663333**. A complement of this color would be **26, 13.036, 221.697**, and the grayscale version is **20, 0.004, 296.813**.

A 20% lighter version of the original color is **40, 19.297, 39.765**, and **2, 10.621, 17.229** is the 20% darker color. If you saturate the color by 10%, you get **18, 23.457, 39.804**, and if you desaturate by 10%, it is **22, 15.394, 38.655**.

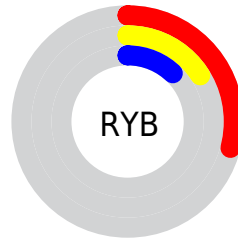
Distribution



Red (29%)

Green (15%)

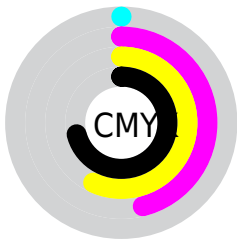
Blue (12%)



Red (29%)

Yellow (16%)

Blue (12%)

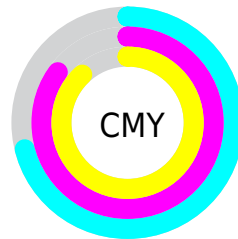


Cyan (0%)

Magenta (46%)

Yellow (57%)

Black (71%)



Cyan (71%)

Magenta (85%)

Yellow (88%)


Brightness & Saturation Gradients

These gradients show how the CIELCh color 20, 19.321, 39.127 changes by changing the brightness by 10 percent. The first figure shows a shift by +10% for each color and the second figure -10%.

Similar to the brightness gradients but the following saturation gradients show a change of the CIELCh color 20, 19.321, 39.127 by changing the saturation by 10% instead.

 20, 19.321, 39.127

 20, 19.321, 39.127

 100, 19.321,
39.127

 10, 19.321, 39.127

 0, 19.321, 39.127

 40, 19.321, 39.127

 50, 19.321, 39.127

 60, 19.321, 39.127

 70, 19.321, 39.127

 80, 19.321, 39.127

 90, 19.321, 39.127

 20, 19.321, 39.127

 20, 19.321, 39.127

■ 18, 23.457, 39.804

■ 22, 15.394, 38.655

■ 17, 27.613, 40.361

■ 24, 11.705, 38.356

■ 15, 31.006, 39.461

■ 26, 8.260, 38.204

■ 14, 33.944, 38.652

■ 28, 5.054, 38.162

■ 14, 34.669, 38.589

■ 30, 2.073, 38.162

■ 32, 0.701, 218.819

■ 34, 3.287, 218.728

■ 36, 5.703, 218.942

■ 38, 7.968, 219.209

Harmonies

Complementary

The Complementary color scheme is a pair of colors which are on the opposite of each other on the color wheel.



20, 19.321, 39.127



26, 13.036, 221.697

Rectangle

The Rectangle color scheme consists of four colors that form a rectangle on the color wheel.



20, 19.321, 39.127



20, 19.321, 89.127



20, 19.321, 219.127



20, 19.321, 269.127

Sweetspot

The Sweet Spot groups the original color and five complimentary colors.



20, 19.320, 39.131



36, 6.095, 38.162



19, 28.312, 333.301



17, 4.124, 38.163



72, 0.009, 296.813



20, 0.004, 296.813

Same Dimension

The Same Dimension uses a secret algorithm to generate beautiful new colors.



20, 19.320, 39.131



24, 30.009, 40.143



26, 19.866, 85.666



13, 1.533, 38.167



21, 46.533, 41.677



50, 91.612, 42.913

Inverse Universe

The Inverse Universe completely reimagines the original color for something new.



26, 13.036, 221.697



32, 17.927, 223.690



18, 20.028, 281.864



13, 1.462, 218.681



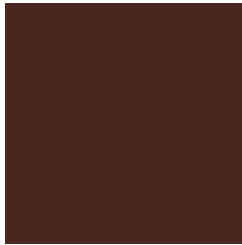
31, 21.866, 231.131



69, 40.108, 234.065

Previews

White Background



This preview shows how the CIELCh color 20, 19.321, 39.127 looks on a white background.

Color Contrast Check

Large Text (above 18pt) WCAG AA ✓ Pass

Any Text WCAG AA ✓ Pass

Large Text (above 18pt) WCAG AAA ✓ Pass

Any Text WCAG AAA ✓ Pass

Black Background



This preview shows how the CIE LCh color 20, 19.321, 39.127 looks on a black background.

Color Contrast Check

Large Text (above 18pt) WCAG AA × Fail

Any Text WCAG AA × Fail

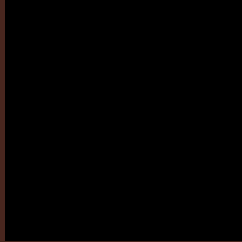
Large Text (above 18pt) WCAG AAA × Fail

Any Text WCAG AAA × Fail

If you want to check with other color combinations, try the [Color Contrast Checker](#).

CIELCh 20, 19.321, 39.127

Background



This preview shows how black text looks on a background with the CIELCh color 20, 19.321, 39.127.

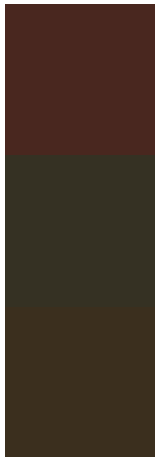


This preview shows how white text looks on a background with the CIELCh color 20, 19.321, 39.127.

Color Blindness Simulation

Color vision deficiency is a very complex topic, and I could not describe the different causes any better than Wikipedia does, so if you want to learn more, you should check out their [article about color blindness](#).

Dichromacy



Original Color

20, 19.321, 39.127

Protanopia

20, 9.651, 95.630

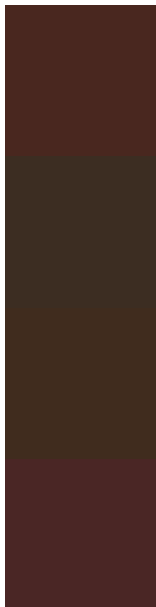
Deuteranopia

20, 13.233, 78.520



Tritanopia
20, 18.177, 17.735

Trichromacy



Original Color
20, 19.321, 39.127

Protanomaly
20, 10.984, 62.658

Deuteranomaly
20, 14.601, 60.575

Tritanomaly
20, 18.668, 25.909

Monochromacy



Original Color
20, 19.321, 39.127

Achromatopsia
20, 0.004, 296.813

Achromatomaly
20, 6.344, 39.166

CSS Examples

Text

The CSS property to change the color of the text to CIELCh 20, 19.321, 39.127 is called "color". The color property can be set on classes, ids or directly on the HTML element.

This example shows how text in the color `rgb(73, 39, 31)` looks like.

```
.text, #text, p{  
    color:rgb(73, 39, 31)  
}
```

If you want to add a text shadow in that color use the text-shadow property, you can generate a text shadow directly with our [CSS Text Shadow Generator](#).

Here you see how black text with a 4 pixel rgb(73, 39, 31) colored shadow looks like.

```
.shadow{ text-shadow: 4px 4px 2px rgb(73, 39, 31) }
```

Border

The CSS property to change the border of an element to CIELCh 20, 19.321, 39.127 is called "border". The border property can be set on classes, ids or directly on the HTML element.

This example shows the color as border, it can be applied via the CSS property "border" or "border-color".

```
.border, #border, table{ border:4px solid rgb(73, 39, 31) }
```

If only the border color should be changed use the property border-color.

```
.border{ border-color:rgb(73, 39, 31) }
```

If you want to add a box shadow in that color use:

Here you see how a box with a 4 pixel rgb(73, 39, 31) colored shadow looks like.

```
.boxshadow{ -moz-box-shadow:4px 4px 4px  
4px rgb(73, 39, 31); -webkit-box-  
shadow:4px 4px 4px 4px rgb(73, 39, 31);  
box-shadow:4px 4px 4px 4px rgb(73, 39, 31)  
}
```

Background

The CSS property to change the background color of an element to CIELCh 20, 19.321, 39.127 is called "background". The background property can be set on classes, ids or directly on the HTML element.

```
.background, #background, body{  
background: rgb(73, 39, 31) }
```

If only the background color should be changed can be used:

```
.background{ background-color: rgb(73, 39,  
31) }
```

This example shows the color as background, it is applied via the CSS property "background".

To optimize and compress your CSS code, you can use our [online CSS compressor and optimizer](#) based on csstidy. If you want to create a linear or radial gradient as background or border, check our [CSS Gradient Generator](#).

Hey! You found this booklet
interesting? Support Converting
Colors with the new Membership
Option!

The pro membership hides all ads, plus gives you
double the colors in the color bucket, and more
awesome pro features!

[Learn more, Memberships starting at \\$2.50/m!](#)

**Follow me
on Twitter!**

@ConvertingColor