

Converting Colors

CIELCh(20, 19.617, 24.768)

Have a look what the booklet for
CIELCh(20, 19.617, 24.768) contains.

CIELCh(20, 19.607, 24.256)	3
<i>Conversions</i>	4
<i>Details</i>	6
<i>Harmonies</i>	11
<i>Previews</i>	20
<i>Color Blindness Simulation</i>	23
<i>CSS Examples</i>	26

Color

CIELCh(20, 19.607, 24.256)

Conversions

Conversions Part 1

Format	Color
Hex	4B2525
RGB	75, 37, 37
RGB Percent	29%, 15%, 15%
CMY	0.7045, 0.8536, 0.8537
CMYK	0.00, 0.50, 0.50, 0.70
HSL	0°, 34%, 22%
HSV	0°, 50%, 30%
XYZ	3.9403, 2.9891, 2.1448
YIQ	48.3620, 22.6480, 8.0560

Conversions

Conversions Part 2

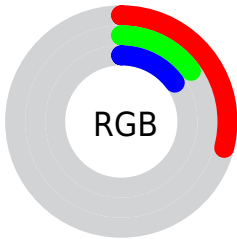
Format	Color
RYB	75, 37, 37
Decimal	4924709
CIELab	20.00, 17.88, 8.05
CIElCh	20, 19.607, 24.256
Yxy	2.9891, 0.4342, 0.3294
Android (android.graphics.Color)	4283114789 (0xFF4B2525)
YUV	48.3620, -5.6015, 23.3615
Hunter-Lab	17.2889, 10.4266, 4.7468

Details

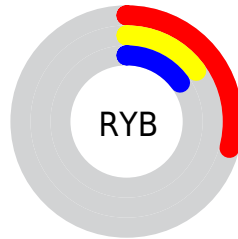
The CIELCh color **20, 19.607, 24.256** is a dark color, and the websafe version is hex **663333**. A complement of this color would be **29, 14.133, 197.361**, and the grayscale version is **20, 0.004, 296.813**.

A 20% lighter version of the original color is **40, 19.511, 23.995**, and **3, 12.529, 17.560** is the 20% darker color. If you saturate the color by 10%, you get **18, 24.085, 26.125**, and if you desaturate by 10%, it is **22, 15.264, 22.789**.

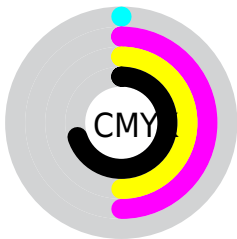
Distribution



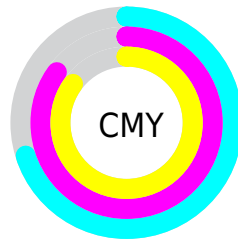
- Red (29%)
- Green (15%)
- Blue (15%)



- Red (29%)
- Yellow (15%)
- Blue (15%)



- Cyan (0%)
- Magenta (50%)
- Yellow (50%)
- Black (70%)



- Cyan (70%)
- Magenta (85%)
- Yellow (85%)


Brightness & Saturation Gradients

These gradients show how the CIELCh color 20, 19.607, 24.256 changes by changing the brightness by 10 percent. The first figure shows a shift by +10% for each color and the second figure -10%.

Similar to the brightness gradients but the following saturation gradients show a change of the CIELCh color 20, 19.607, 24.256 by changing the saturation by 10% instead.

 20, 19.607, 24.256

 20, 19.607, 24.256

 100, 19.607,
24.256

 10, 19.607, 24.256

 40, 19.607, 24.256

 0, 19.607, 24.256

 50, 19.607, 24.256

 60, 19.607, 24.256

 70, 19.607, 24.256

 80, 19.607, 24.256

 90, 19.607, 24.256

 20, 19.607, 24.256

 20, 19.607, 24.256

18, 24.085, 26.125

22, 15.264, 22.789

16, 28.604, 28.458

24, 11.124, 21.632

15, 32.690, 30.282

27, 7.222, 20.715

14, 35.799, 30.875

29, 3.570, 19.961

13, 38.678, 30.959

32, 0.164, 17.793

34, 3.010, 199.103

37, 5.970, 198.688

40, 8.738, 198.371

42, 11.332,
198.114

Harmonies

Complementary

The Complementary color scheme is a pair of colors which are on the opposite of each other on the color wheel.



20, 19.607, 24.256



29, 14.133, 197.361

Rectangle

The Rectangle color scheme consists of four colors that form a rectangle on the color wheel.



20, 19.607, 24.256



20, 19.607, 74.256



20, 19.607, 204.256



20, 19.607, 254.256

Sweetspot

The Sweet Spot groups the original color and five complimentary colors.



20, 19.606, 24.259



36, 6.395, 20.327



21, 29.206, 326.831



17, 4.320, 20.404



72, 0.009, 296.813



20, 0.004, 296.813

Same Dimension

The Same Dimension uses a secret algorithm to generate beautiful new colors.



20, 19.606, 24.259



24, 30.081, 26.708



25, 16.111, 69.744



14, 1.909, 19.831



19, 50.497, 35.971



48, 96.562, 40.003

Inverse Universe

The Inverse Universe completely reimagines the original color for something new.



29, 14.133, 197.361



37, 19.714, 197.011



23, 14.131, 263.664



15, 1.818, 199.110



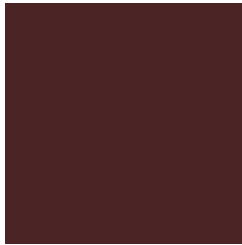
39, 25.559, 196.443



83, 46.251, 196.447

Previews

White Background



This preview shows how the CIELCh color 20, 19.607, 24.256 looks on a white background.

Color Contrast Check

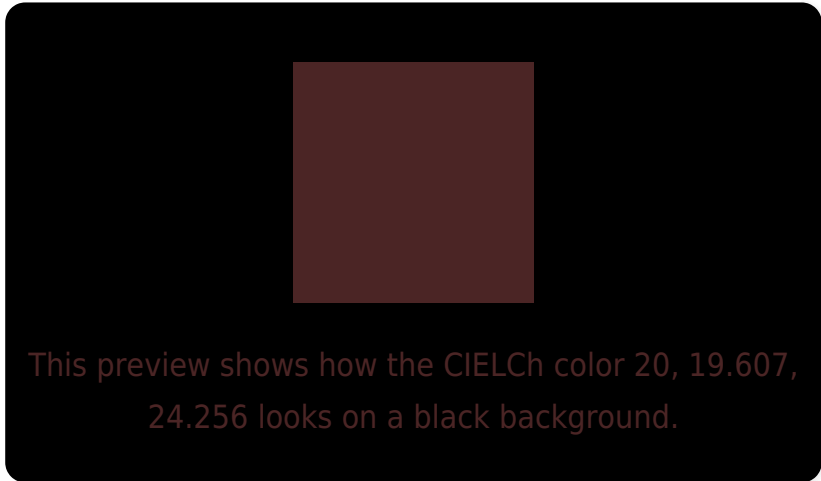
Large Text (above 18pt) WCAG AA ✓ Pass

Any Text WCAG AA ✓ Pass

Large Text (above 18pt) WCAG AAA ✓ Pass

Any Text WCAG AAA ✓ Pass

Black Background



Color Contrast Check

Large Text (above 18pt) WCAG AA × Fail

Any Text WCAG AA × Fail

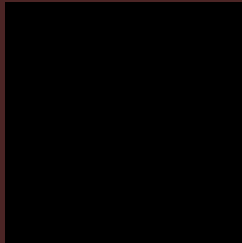
Large Text (above 18pt) WCAG AAA × Fail

Any Text WCAG AAA × Fail

If you want to check with other color combinations, try the [Color Contrast Checker](#).

CIELCh 20, 19.607, 24.256

Background



This preview shows how black text looks on a background with the CIELCh color 20, 19.607, 24.256.



This preview shows how white text looks on a background with the CIELCh color 20, 19.607, 24.256.

Color Blindness Simulation

Color vision deficiency is a very complex topic, and I could not describe the different causes any better than Wikipedia does, so if you want to learn more, you should check out their [article about color blindness](#).

Dichromacy



Original Color

20, 19.607, 24.256

Protanopia

20, 4.168, 95.662

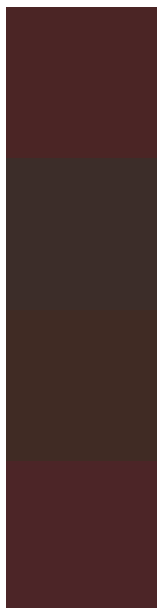
Deuteranopia

20, 9.438, 71.368



Tritanopia
20, 19.742, 18.724

Trichromacy



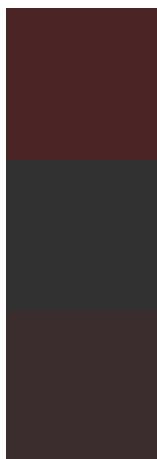
Original Color
20, 19.607, 24.256

Protanomaly
20, 8.083, 40.272

Deuteranomaly
20, 12.086, 44.283

Tritanomaly
20, 19.843, 20.635

Monochromacy



Original Color
20, 19.607, 24.256

Achromatopsia
20, 0.004, 296.813

Achromatomaly
20, 6.872, 20.873

CSS Examples

Text

The CSS property to change the color of the text to CIELCh 20, 19.607, 24.256 is called "color". The color property can be set on classes, ids or directly on the HTML element.

This example shows how text in the color `rgb(75, 37, 37)` looks like.

```
.text, #text, p{  
    color:rgb(75, 37, 37)  
}
```

If you want to add a text shadow in that color use the text-shadow property, you can generate a text shadow directly with our [CSS Text Shadow Generator](#).

Here you see how black text with a 4 pixel rgb(75, 37, 37) colored shadow looks like.

```
.shadow{ text-shadow: 4px 4px 2px rgb(75, 37, 37) }
```

Border

The CSS property to change the border of an element to CIELCh 20, 19.607, 24.256 is called "border". The border property can be set on classes, ids or directly on the HTML element.

This example shows the color as border, it can be applied via the CSS property "border" or "border-color".

```
.border, #border, table{ border:4px solid rgb(75, 37, 37) }
```

If only the border color should be changed use the property `border-color`.

```
.border{ border-color:rgb(75, 37, 37) }
```

If you want to add a box shadow in that color use:

Here you see how a box with a 4 pixel `rgb(75, 37, 37)` colored shadow looks like.

```
.boxshadow{ -moz-box-shadow:4px 4px 4px  
4px rgb(75, 37, 37); -webkit-box-  
shadow:4px 4px 4px 4px rgb(75, 37, 37);  
box-shadow:4px 4px 4px 4px rgb(75, 37, 37)  
}
```

Background

The CSS property to change the background color of an element to CIELCh 20, 19.607, 24.256 is called "background". The background property can be set on classes, ids or directly on the HTML element.

```
.background, #background, body{  
background: rgb(75, 37, 37) }
```

If only the background color should be changed can be used:

```
.background{ background-color: rgb(75, 37,  
37) }
```

This example shows the color as background, it is applied via the CSS property "background".

To optimize and compress your CSS code, you can use our [online CSS compressor and optimizer](#) based on csstidy. If you want to create a linear or radial gradient as background or border, check our [CSS Gradient Generator](#).

Hey! You found this booklet interesting? Support Converting Colors with the new Membership Option!

The pro membership hides all ads, plus gives you double the colors in the color bucket, and more awesome pro features!

[Learn more, Memberships starting at \\$2.50/m!](#)

**Follow me
on Twitter!**

@ConvertingColor