

Converting Colors

CIELCh(20, 20.282, 21.129)

Have a look what the booklet for
CIELCh(20, 20.282, 21.129) contains.

CIELCh(20, 19.969, 22.523)	3
<i>Conversions</i>	4
<i>Details</i>	6
<i>Harmonies</i>	11
<i>Previews</i>	20
<i>Color Blindness Simulation</i>	23
<i>CSS Examples</i>	26

Color

CIELCh(20, 19.969, 22.523)

Conversions

Conversions Part 1

Format	Color
Hex	4C2526
RGB	76, 37, 38
RGB Percent	30%, 15%, 15%
CMY	0.7024, 0.8553, 0.8513
CMYK	0.00, 0.51, 0.50, 0.70
HSL	358°, 35%, 22%
HSV	358°, 51%, 30%
XYZ	3.9794, 2.9891, 2.1935
YIQ	48.7750, 22.9230, 8.5790

Conversions

Conversions Part 2

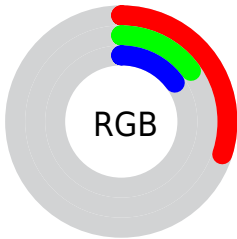
Format	Color
RYB	76, 37, 38
Decimal	4990246
CIELab	20.00, 18.45, 7.65
CIElCh	20, 19.969, 22.523
Yxy	2.9891, 0.4343, 0.3262
Android (android.graphics.Color)	4283180326 (0xFF4C2526)
YUV	48.7750, -5.3121, 23.8763
Hunter-Lab	17.2889, 10.8298, 4.5798

Details

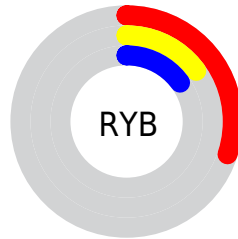
The CIELCh color **20, 19.969, 22.523** is a dark color, and the websafe version is hex **663333**. A complement of this color would be **30, 14.534, 194.700**, and the grayscale version is **20, 0.004, 296.813**.

A 20% lighter version of the original color is **40, 19.872, 22.326**, and **3, 13.206, 17.655** is the 20% darker color. If you saturate the color by 10%, you get **18, 24.394, 24.491**, and if you desaturate by 10%, it is **22, 15.648, 20.968**.

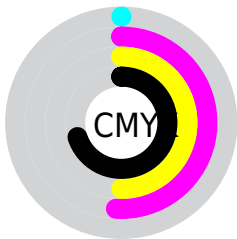
Distribution



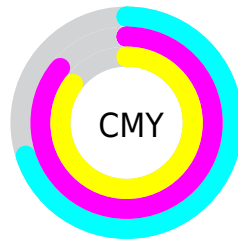
- Red (30%)
- Green (15%)
- Blue (15%)



- Red (30%)
- Yellow (15%)
- Blue (15%)



- Cyan (0%)
- Magenta (51%)
- Yellow (50%)
- Black (70%)



- Cyan (70%)
- Magenta (86%)
- Yellow (85%)


Brightness & Saturation Gradients

These gradients show how the CIELCh color 20, 19.969, 22.523 changes by changing the brightness by 10 percent. The first figure shows a shift by +10% for each color and the second figure -10%.

Similar to the brightness gradients but the following saturation gradients show a change of the CIELCh color 20, 19.969, 22.523 by changing the saturation by 10% instead.

 20, 19.969, 22.523

 20, 19.969, 22.523

 100, 19.969,
22.523

 10, 19.969, 22.523

 40, 19.969, 22.523

 0, 19.969, 22.523

 50, 19.969, 22.523

 60, 19.969, 22.523

 70, 19.969, 22.523

 80, 19.969, 22.523

 90, 19.969, 22.523

 20, 19.969, 22.523

 20, 19.969, 22.523

18, 24.394, 24.491

22, 15.648, 20.968

16, 28.826, 26.940

24, 11.506, 19.730

15, 32.886, 29.147

27, 7.585, 18.738

14, 36.003, 29.994

29, 3.901, 17.917

13, 38.605, 30.065

32, 0.454, 16.746

34, 2.766, 196.927

37, 5.776, 196.442

40, 8.595, 196.064

42, 11.241,
195.749

Harmonies

Complementary

The Complementary color scheme is a pair of colors which are on the opposite of each other on the color wheel.



20, 19.969, 22.523



30, 14.534, 194.700

Rectangle

The Rectangle color scheme consists of four colors that form a rectangle on the color wheel.



20, 19.969, 22.523



20, 19.969, 72.523



20, 19.969, 202.523



20, 19.969, 252.523

Sweetspot

The Sweet Spot groups the original color and five complimentary colors.



20, 19.968, 22.526



37, 6.531, 18.248



21, 29.640, 325.875



18, 4.510, 18.341



73, 0.009, 296.813



21, 0.004, 296.813

Same Dimension

The Same Dimension uses a secret algorithm to generate beautiful new colors.



20, 19.968, 22.526



24, 30.998, 25.174



25, 16.370, 66.259



14, 1.910, 17.710



19, 49.952, 34.950



48, 95.515, 39.199

Inverse Universe

The Inverse Universe completely reimagines the original color for something new.



20, 19.968, 22.526



24, 30.998, 25.174



23, 13.902, 260.025



14, 1.910, 17.710



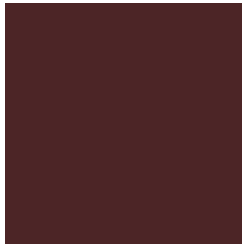
19, 49.952, 34.950



48, 95.515, 39.199

Previews

White Background



This preview shows how the CIELCh color 20, 19.969, 22.523 looks on a white background.

Color Contrast Check

Large Text (above 18pt) WCAG AA ✓ Pass

Any Text WCAG AA ✓ Pass

Large Text (above 18pt) WCAG AAA ✓ Pass

Any Text WCAG AAA ✓ Pass

Black Background



This preview shows how the CIELCh color 20, 19.969, 22.523 looks on a black background.

Color Contrast Check

Large Text (above 18pt) WCAG AA × Fail

Any Text WCAG AA × Fail

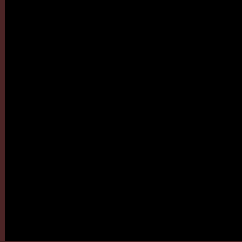
Large Text (above 18pt) WCAG AAA × Fail

Any Text WCAG AAA × Fail

If you want to check with other color combinations, try the [Color Contrast Checker](#).

CIELCh 20, 19.969, 22.523

Background



This preview shows how black text looks on a background with the CIELCh color 20, 19.969, 22.523.



This preview shows how white text looks on a background with the CIELCh color 20, 19.969, 22.523.

Color Blindness Simulation

Color vision deficiency is a very complex topic, and I could not describe the different causes any better than Wikipedia does, so if you want to learn more, you should check out their [article about color blindness](#).

Dichromacy



Original Color

20, 19.969, 22.523

Protanopia

20, 3.512, 93.335

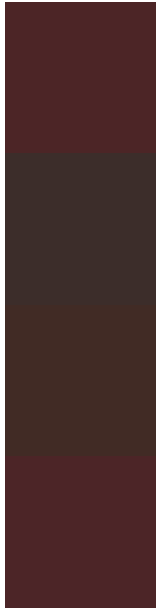
Deuteranopia

20, 9.438, 71.368



Tritanopia
20, 19.843, 20.635

Trichromacy



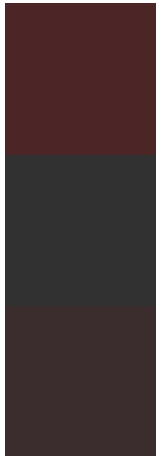
Original Color
20, 19.969, 22.523

Protanomaly
20, 7.822, 35.825

Deuteranomaly
20, 12.252, 40.748

Tritanomaly
20, 19.843, 20.635

Monochromacy



Original Color
20, 19.969, 22.523

Achromatopsia
20, 0.004, 296.813

Achromatomaly
20, 6.872, 20.873

CSS Examples

Text

The CSS property to change the color of the text to CIELCh 20, 19.969, 22.523 is called "color". The color property can be set on classes, ids or directly on the HTML element.

This example shows how text in the color `rgb(76, 37, 38)` looks like.

```
.text, #text, p{  
    color:rgb(76, 37, 38)  
}
```

If you want to add a text shadow in that color use the text-shadow property, you can generate a text shadow directly with our [CSS Text Shadow Generator](#).

Here you see how black text with a 4 pixel rgb(76, 37, 38) colored shadow looks like.

```
.shadow{ text-shadow: 4px 4px 2px rgb(76, 37, 38) }
```

Border

The CSS property to change the border of an element to CIELCh 20, 19.969, 22.523 is called "border". The border property can be set on classes, ids or directly on the HTML element.

This example shows the color as border, it can be applied via the CSS property "border" or "border-color".

```
.border, #border, table{ border:4px solid rgb(76, 37, 38) }
```

If only the border color should be changed use the property `border-color`.

```
.border{ border-color:rgb(76, 37, 38) }
```

If you want to add a box shadow in that color use:

Here you see how a box with a 4 pixel `rgb(76, 37, 38)` colored shadow looks like.

```
.boxshadow{ -moz-box-shadow:4px 4px 4px  
4px rgb(76, 37, 38); -webkit-box-  
shadow:4px 4px 4px 4px rgb(76, 37, 38);  
box-shadow:4px 4px 4px 4px rgb(76, 37, 38)  
}
```

Background

The CSS property to change the background color of an element to CIELCh 20, 19.969, 22.523 is called "background". The background property can be set on classes, ids or directly on the HTML element.

```
.background, #background, body{  
background: rgb(76, 37, 38) }
```

If only the background color should be changed can be used:

```
.background{ background-color: rgb(76, 37,  
38) }
```

This example shows the color as background, it is applied via the CSS property "background".

To optimize and compress your CSS code, you can use our [online CSS compressor and optimizer](#) based on csstidy. If you want to create a linear or radial gradient as background or border, check our [CSS Gradient Generator](#).

Hey! You found this booklet
interesting? Support Converting
Colors with the new Membership
Option!

The pro membership hides all ads, plus gives you
double the colors in the color bucket, and more
awesome pro features!

[Learn more, Memberships starting at \\$2.50/m!](#)

**Follow me
on Twitter!**

@ConvertingColor