

Converting Colors

CIELCh(20, 29.529, 40.872)

Have a look what the booklet for
CIELCh(20, 29.529, 40.872) contains.

CIELCh(20, 29.555, 40.753)	3
<i>Conversions</i>	4
<i>Details</i>	6
<i>Harmonies</i>	11
<i>Previews</i>	20
<i>Color Blindness Simulation</i>	23
<i>CSS Examples</i>	26

Color

CIELCh(20, 29.555, 40.753)

Conversions

Conversions Part 1

Format	Color
Hex	532115
RGB	83, 33, 21
RGB Percent	33%, 13%, 8%
CMY	0.6742, 0.8703, 0.9174
CMYK	0.00, 0.60, 0.75, 0.67
HSL	12°, 60%, 20%
HSV	12°, 75%, 33%
XYZ	4.2567, 2.9891, 1.0653
YIQ	46.5820, 33.6520, 6.8680

Conversions

Conversions Part 2

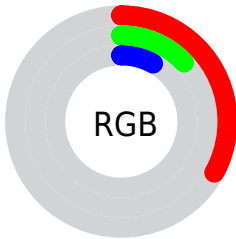
Format	Color
RYB	83, 36, 21
Decimal	5447957
CIELab	20.00, 22.39, 19.29
CIELCh	20, 29.555, 40.753
Yxy	2.9891, 0.5122, 0.3596
Android (android.graphics.Color)	4283638037 (0xFF532115)
YUV	46.5820, -12.6119, 31.9386
Hunter-Lab	17.2889, 13.6930, 8.4490

Details

The CIELCh color **20, 29.555, 40.753** is a dark color, and the websafe version is hex **663333**. A complement of this color would be **28, 16.982, 224.992**, and the grayscale version is **19, 0.004, 296.813**.

A 20% lighter version of the original color is **40, 29.360, 40.636**, and **3, 16.126, 17.972** is the 20% darker color. If you saturate the color by 10%, you get **18, 33.983, 41.053**, and if you desaturate by 10%, it is **22, 24.819, 39.928**.

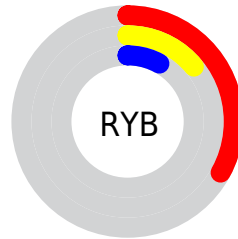
Distribution



Red (33%)

Green (13%)

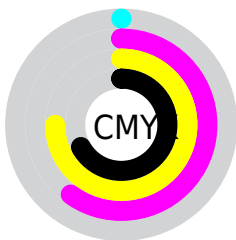
Blue (8%)



Red (33%)

Yellow (14%)

Blue (8%)

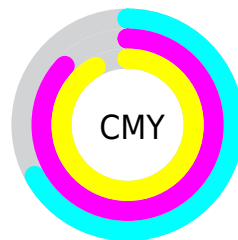


Cyan (0%)

Magenta (60%)

Yellow (75%)

Black (67%)



Cyan (67%)

Magenta (87%)

Yellow (92%)


Brightness & Saturation Gradients

These gradients show how the CIELCh color 20, 29.555, 40.753 changes by changing the brightness by 10 percent. The first figure shows a shift by +10% for each color and the second figure -10%.

Similar to the brightness gradients but the following saturation gradients show a change of the CIELCh color 20, 29.555, 40.753 by changing the saturation by 10% instead.

 20, 29.555, 40.753

 20, 29.555, 40.753

 100, 29.555,
40.753

 10, 29.555, 40.753

 40, 29.555, 40.753

 0, 29.555, 40.753

 50, 29.555, 40.753

 60, 29.555, 40.753

 70, 29.555, 40.753

 80, 29.555, 40.753

 90, 29.555, 40.753

 20, 29.555, 40.753

 20, 29.555, 40.753

18, 33.983, 41.053

22, 24.819, 39.928

17, 37.471, 40.304

24, 20.266, 39.298

17, 39.208, 40.203

26, 15.959, 38.868

28, 11.924, 38.614

30, 8.164, 38.503

32, 4.671, 38.495

34, 1.427, 38.466

37, 1.589, 219.034

39, 4.398, 219.155

Harmonies

Complementary

The Complementary color scheme is a pair of colors which are on the opposite of each other on the color wheel.



20, 29.555, 40.753



28, 16.982, 224.992

Rectangle

The Rectangle color scheme consists of four colors that form a rectangle on the color wheel.



20, 29.555, 40.753



20, 29.555, 90.753



20, 29.555, 220.753



20, 29.555, 270.753

Sweetspot

The Sweet Spot groups the original color and five complimentary colors.



20, 29.554, 40.756



39, 8.923, 38.495



19, 38.500, 334.507



18, 5.956, 38.500



74, 0.009, 296.813



22, 0.004, 296.813

Same Dimension

The Same Dimension uses a secret algorithm to generate beautiful new colors.



20, 29.554, 40.756



24, 45.358, 42.225



28, 28.494, 83.190



15, 1.717, 38.507



22, 48.661, 42.164



51, 93.085, 42.970

Inverse Universe

The Inverse Universe completely reimagines the original color for something new.



28, 16.982, 224.992



34, 22.274, 229.283



17, 29.485, 286.795



16, 1.635, 219.048



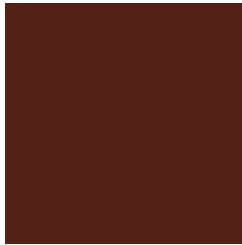
33, 22.671, 232.004



70, 40.844, 234.796

Previews

White Background



This preview shows how the CIELCh color 20, 29.555, 40.753 looks on a white background.

Color Contrast Check

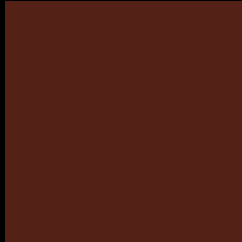
Large Text (above 18pt) WCAG AA ✓ Pass

Any Text WCAG AA ✓ Pass

Large Text (above 18pt) WCAG AAA ✓ Pass

Any Text WCAG AAA ✓ Pass

Black Background



This preview shows how the CIE LCh color 20, 29.555, 40.753 looks on a black background.

Color Contrast Check

Large Text (above 18pt) WCAG AA × Fail

Any Text WCAG AA × Fail

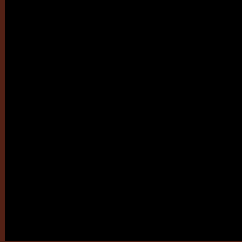
Large Text (above 18pt) WCAG AAA × Fail

Any Text WCAG AAA × Fail

If you want to check with other color combinations, try the [Color Contrast Checker](#).

CIELCh 20, 29.555, 40.753

Background



This preview shows how black text looks on a background with the CIELCh color 20, 29.555, 40.753.

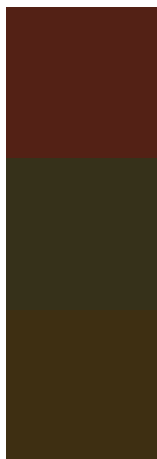


This preview shows how white text looks on a background with the CIELCh color 20, 29.555, 40.753.

Color Blindness Simulation

Color vision deficiency is a very complex topic, and I could not describe the different causes any better than Wikipedia does, so if you want to learn more, you should check out their [article about color blindness](#).

Dichromacy



Original Color

20, 29.555, 40.753

Protanopia

20, 15.560, 96.566

Deuteranopia

20, 21.053, 82.140



Tritanopia
20, 26.911, 25.279

Trichromacy



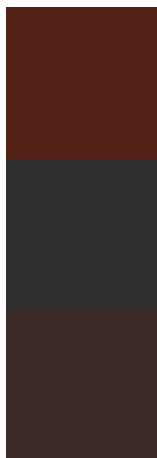
Original Color
20, 29.555, 40.753

Protanomaly
20, 18.065, 64.865

Deuteranomaly
20, 22.662, 62.563

Tritanomaly
20, 27.833, 30.502

Monochromacy



Original Color
20, 29.555, 40.753

Achromatopsia
19, 0.004, 296.813

Achromatomaly
19, 9.696, 37.459

CSS Examples

Text

The CSS property to change the color of the text to CIELCh 20, 29.555, 40.753 is called "color". The color property can be set on classes, ids or directly on the HTML element.

This example shows how text in the color `rgb(83, 33, 21)` looks like.

```
.text, #text, p{  
    color:rgb(83, 33, 21)  
}
```

If you want to add a text shadow in that color use the text-shadow property, you can generate a text shadow directly with our [CSS Text Shadow Generator](#).

Here you see how black text with a 4 pixel rgb(83, 33, 21) colored shadow looks like.

```
.shadow{ text-shadow: 4px 4px 2px rgb(83, 33, 21) }
```

Border

The CSS property to change the border of an element to CIELCh 20, 29.555, 40.753 is called "border". The border property can be set on classes, ids or directly on the HTML element.

This example shows the color as border, it can be applied via the CSS property "border" or "border-color".

```
.border, #border, table{ border:4px solid rgb(83, 33, 21) }
```

If only the border color should be changed use the property `border-color`.

```
.border{ border-color:rgb(83, 33, 21) }
```

If you want to add a box shadow in that color use:

Here you see how a box with a 4 pixel `rgb(83, 33, 21)` colored shadow looks like.

```
.boxshadow{ -moz-box-shadow:4px 4px 4px  
4px rgb(83, 33, 21); -webkit-box-  
shadow:4px 4px 4px 4px rgb(83, 33, 21);  
box-shadow:4px 4px 4px 4px rgb(83, 33, 21)  
}
```

Background

The CSS property to change the background color of an element to CIELCh 20, 29.555, 40.753 is called "background". The background property can be set on classes, ids or directly on the HTML element.

```
.background, #background, body{  
background: rgb(83, 33, 21) }
```

If only the background color should be changed can be used:

```
.background{ background-color: rgb(83, 33,  
21) }
```

This example shows the color as background, it is applied via the CSS property "background".

To optimize and compress your CSS code, you can use our [online CSS compressor and optimizer](#) based on csstidy. If you want to create a linear or radial gradient as background or border, check our [CSS Gradient Generator](#).

Hey! You found this booklet interesting? Support Converting Colors with the new Membership Option!

The pro membership hides all ads, plus gives you double the colors in the color bucket, and more awesome pro features!

[Learn more, Memberships starting at \\$2.50/m!](#)

**Follow me
on Twitter!**

@ConvertingColor