

Converting Colors

CIELCh(21, 11.553, 21.960)

Have a look what the booklet for
CIELCh(21, 11.553, 21.960) contains.

CIELCh(21, 11.435, 21.896)	3
<i>Conversions</i>	4
<i>Details</i>	6
<i>Harmonies</i>	11
<i>Previews</i>	20
<i>Color Blindness Simulation</i>	23
<i>CSS Examples</i>	26

Color

CIELCh(21, 11.435, 21.896)

Conversions

Conversions Part 1

Format	Color
Hex	442D2D
RGB	68, 45, 45
RGB Percent	27%, 18%, 18%
CMY	0.7351, 0.8251, 0.8251
CMYK	0.00, 0.34, 0.34, 0.74
HSL	360°, 20%, 22%
HSV	360°, 34%, 26%
XYZ	3.7419, 3.2451, 2.8711
YIQ	51.8770, 13.7080, 4.8760

Conversions

Conversions Part 2

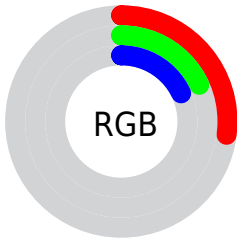
Format	Color
R _Y B	68, 45, 45
Decimal	4468013
CIE Lab	21.00, 10.61, 4.26
CIE LCh	21, 11.435, 21.896
Yxy	3.2451, 0.3796, 0.3292
Android (android.graphics.Color)	4282658093 (0xFF442D2D)
YUV	51.8770, -3.3904, 14.1399
Hunter-Lab	18.0142, 5.5525, 3.1603

Details

The CIELCh color **21, 11.435, 21.896** is a dark color, and the websafe version is hex **333333**. A complement of this color would be **27, 9.314, 197.914**, and the grayscale version is **21, 0.004, 296.813**.

A 20% lighter version of the original color is **41, 11.385, 20.943**, and **2, 9.436, 19.405** is the 20% darker color. If you saturate the color by 10%, you get **19, 15.271, 23.118**, and if you desaturate by 10%, it is **23, 7.804, 20.935**.

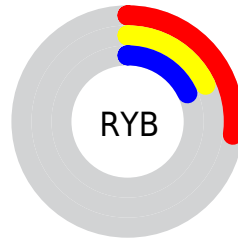
Distribution



Red (27%)

Green (18%)

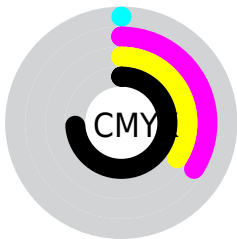
Blue (18%)



Red (27%)

Yellow (18%)

Blue (18%)

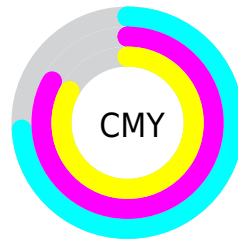


Cyan (0%)

Magenta (34%)

Yellow (34%)

Black (74%)



Cyan (74%)

Magenta (83%)

Yellow (83%)

Brightness & Saturation Gradients

These gradients show how the CIELCh color 21, 11.435, 21.896 changes by changing the brightness by 10 percent. The first figure shows a shift by +10% for each color and the second figure -10%.

Similar to the brightness gradients but the following saturation gradients show a change of the CIELCh color 21, 11.435, 21.896 by changing the saturation by 10% instead.

■ 21, 11.435, 21.896

■ 21, 11.435, 21.896

■ 100, 11.435,
21.896

■ 11, 11.435, 21.896

■ 41, 11.435, 21.896

■ 1, 11.435, 21.896

■ 51, 11.435, 21.896

■ 0, 11.435, 21.896

■ 61, 11.435, 21.896

■ 71, 11.435, 21.896

■ 81, 11.435, 21.896

■ 91, 11.435, 21.896

■ 21, 11.435, 21.896

■ 21, 11.435, 21.896

19, 15.271, 23.118

23, 7.804, 20.935

17, 19.275, 24.658

25, 4.396, 20.153

15, 23.383, 26.600

28, 1.212, 19.397

14, 27.359, 28.464

30, 1.760, 199.266

12, 30.585, 28.984

32, 4.533, 198.784

11, 33.355, 28.858

35, 7.127, 198.441

11, 35.115, 28.563

37, 9.558, 198.166

40, 11.846,
197.940

42, 14.004,
197.752

Harmonies

Complementary

The Complementary color scheme is a pair of colors which are on the opposite of each other on the color wheel.



21, 11.435, 21.896



27, 9.314, 197.914

Rectangle

The Rectangle color scheme consists of four colors that form a rectangle on the color wheel.



21, 11.435, 21.896



21, 11.435, 71.896



21, 11.435, 201.896



21, 11.435, 251.896

Sweetspot

The Sweet Spot groups the original color and five complimentary colors.



21, 11.434, 21.901



34, 3.818, 19.899



22, 18.174, 325.588



16, 2.568, 19.938



70, 0.009, 296.813



18, 0.003, 296.813

Same Dimension

The Same Dimension uses a secret algorithm to generate beautiful new colors.



21, 11.434, 21.901



26, 17.438, 22.933



24, 9.480, 69.941



12, 1.688, 19.765



18, 48.292, 35.255



47, 94.941, 39.996

Inverse Universe

The Inverse Universe completely reimagines the original color for something new.



21, 11.434, 21.901



26, 17.438, 22.933



23, 8.649, 258.254



12, 1.688, 19.765



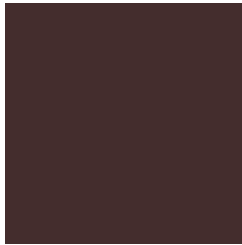
18, 48.292, 35.255



47, 94.941, 39.996

Previews

White Background



This preview shows how the CIELCh color 21, 11.435, 21.896 looks on a white background.

Color Contrast Check

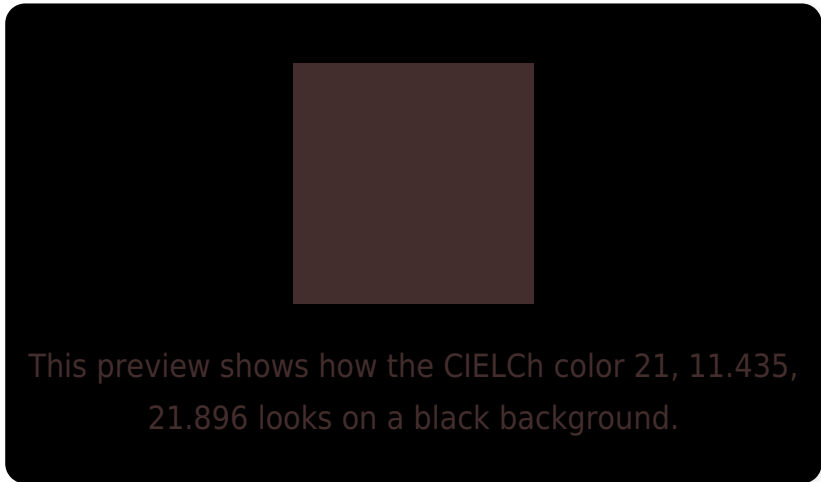
Large Text (above 18pt) WCAG AA ✓ Pass

Any Text WCAG AA ✓ Pass

Large Text (above 18pt) WCAG AAA ✓ Pass

Any Text WCAG AAA ✓ Pass

Black Background



Color Contrast Check

Large Text (above 18pt) WCAG AA × Fail

Any Text WCAG AA × Fail

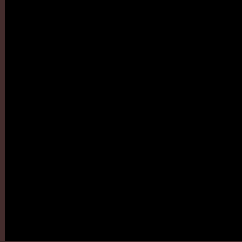
Large Text (above 18pt) WCAG AAA × Fail

Any Text WCAG AAA × Fail

If you want to check with other color combinations, try the [Color Contrast Checker](#).

CIELCh 21, 11.435, 21.896

Background



This preview shows how black text looks on a background with the CIELCh color 21, 11.435, 21.896.

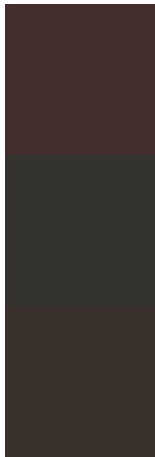


This preview shows how white text looks on a background with the CIELCh color 21, 11.435, 21.896.

Color Blindness Simulation

Color vision deficiency is a very complex topic, and I could not describe the different causes any better than Wikipedia does, so if you want to learn more, you should check out their [article about color blindness](#).

Dichromacy



Original Color

21, 11.435, 21.896

Protanopia

21, 2.067, 96.441

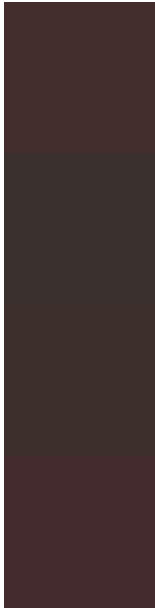
Deuteranopia

21, 5.594, 56.833



Tritanopia
21, 11.890, 12.484

Trichromacy



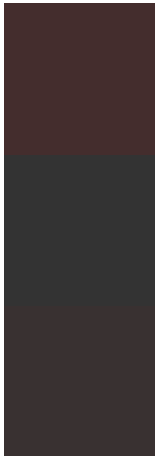
Original Color
21, 11.435, 21.896

Protanomaly
21, 4.570, 37.230

Deuteranomaly
21, 7.265, 36.764

Tritanomaly
21, 11.883, 15.689

Monochromacy



Original Color
21, 11.435, 21.896

Achromatopsia
21, 0.004, 296.813

Achromatomaly
21, 3.820, 20.135

CSS Examples

Text

The CSS property to change the color of the text to CIELCh 21, 11.435, 21.896 is called "color". The color property can be set on classes, ids or directly on the HTML element.

This example shows how text in the color `rgb(68, 45, 45)` looks like.

```
.text, #text, p{  
    color:rgb(68, 45, 45)  
}
```

If you want to add a text shadow in that color use the text-shadow property, you can generate a text shadow directly with our [CSS Text Shadow Generator](#).

Here you see how black text with a 4 pixel rgb(68, 45, 45) colored shadow looks like.

```
.shadow{ text-shadow: 4px 4px 2px rgb(68, 45, 45) }
```

Border

The CSS property to change the border of an element to CIELCh 21, 11.435, 21.896 is called "border". The border property can be set on classes, ids or directly on the HTML element.

This example shows the color as border, it can be applied via the CSS property "border" or "border-color".

```
.border, #border, table{ border:4px solid rgb(68, 45, 45) }
```

If only the border color should be changed use the property `border-color`.

```
.border{ border-color:rgb(68, 45, 45) }
```

If you want to add a box shadow in that color use:

Here you see how a box with a 4 pixel `rgb(68, 45, 45)` colored shadow looks like.

```
.boxshadow{ -moz-box-shadow:4px 4px 4px  
4px rgb(68, 45, 45); -webkit-box-  
shadow:4px 4px 4px 4px rgb(68, 45, 45);  
box-shadow:4px 4px 4px 4px rgb(68, 45, 45)  
}
```

Background

The CSS property to change the background color of an element to CIELCh 21, 11.435, 21.896 is called "background". The background property can be set on classes, ids or directly on the HTML element.

```
.background, #background, body{  
background: rgb(68, 45, 45) }
```

If only the background color should be changed can be used:

```
.background{ background-color: rgb(68, 45,  
45) }
```

This example shows the color as background, it is applied via the CSS property "background".

To optimize and compress your CSS code, you can use our [online CSS compressor and optimizer](#) based on csstidy. If you want to create a linear or radial gradient as background or border, check our [CSS Gradient Generator](#).

Hey! You found this booklet interesting? Support Converting Colors with the new Membership Option!

The pro membership hides all ads, plus gives you double the colors in the color bucket, and more awesome pro features!

[Learn more, Memberships starting at \\$2.50/m!](#)

**Follow me
on Twitter!**

@ConvertingColor