

# Converting Colors

CIELCh(21, 11.930, 18.742)

Have a look what the booklet for  
CIELCh(21, 11.930, 18.742) contains.

<b>CIELCh(21, 11.916, 18.888)</b> .....	3
<i><b>Conversions</b></i> .....	4
<i><b>Details</b></i> .....	6
<i><b>Harmonies</b></i> .....	11
<i><b>Previews</b></i> .....	20
<i><b>Color Blindness Simulation</b></i> .....	23
<i><b>CSS Examples</b></i> .....	26

# Color

**CIELCh(21, 11.916, 18.888)**

# Conversions

## Conversions Part 1

Format	Color
Hex	442C2D
RGB	68, 44, 45
RGB Percent	27%, 17%, 18%
CMY	0.7324, 0.8266, 0.8227
CMYK	0.00, 0.35, 0.34, 0.73
HSL	358°, 21%, 22%
HSV	358°, 35%, 27%
XYZ	3.7859, 3.2451, 2.9304
YIQ	51.2900, 13.9830, 5.3990

# Conversions

## Conversions Part 2

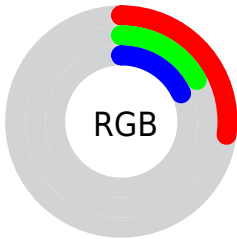
<b>Format</b>	<b>Color</b>
<b>R<sub>YB</sub></b>	68, 44, 45
Decimal	4467757
CIE Lab	21.00, 11.27, 3.86
CIE LCh	21, 11.916, 18.888
Yxy	3.2451, 0.3801, 0.3258
Android (android.graphics.Color)	4282657837 (0xFF442C2D)
YUV	51.2900, -3.1010, 14.6547
Hunter-Lab	18.0142, 5.9886, 2.9652

# Details

The CIELCh color **21, 11.916, 18.888** is a dark color, and the websafe version is hex **333333**. A complement of this color would be **27, 9.786, 194.017**, and the grayscale version is **21, 0.004, 296.813**.

A 20% lighter version of the original color is **41, 11.825, 18.131**, and **2, 9.436, 19.405** is the 20% darker color. If you saturate the color by 10%, you get **19, 15.736, 20.227**, and if you desaturate by 10%, it is **23, 8.273, 17.817**.

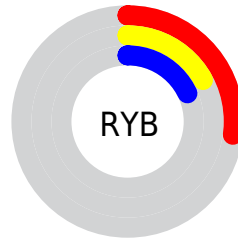
# Distribution



Red (27%)

Green (17%)

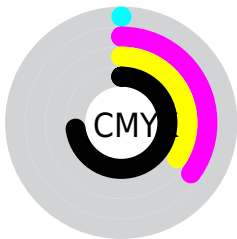
Blue (18%)



Red (27%)

Yellow (17%)

Blue (18%)

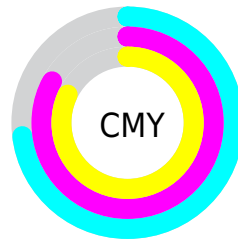


Cyan (0%)

Magenta (35%)

Yellow (34%)

Black (73%)



Cyan (73%)

Magenta (83%)

Yellow (82%)

# Brightness & Saturation Gradients

These gradients show how the CIELCh color 21, 11.916, 18.888 changes by changing the brightness by 10 percent. The first figure shows a shift by +10% for each color and the second figure -10%.

Similar to the brightness gradients but the following saturation gradients show a change of the CIELCh color 21, 11.916, 18.888 by changing the saturation by 10% instead.



■ 21, 11.916, 18.888

■ 21, 11.916, 18.888

■ 100, 11.916,  
18.888

■ 11, 11.916, 18.888

■ 41, 11.916, 18.888

■ 1, 11.916, 18.888

■ 51, 11.916, 18.888

■ 0, 11.916, 18.888

■ 61, 11.916, 18.888

■ 71, 11.916, 18.888

■ 81, 11.916, 18.888

■ 91, 11.916, 18.888

■ 21, 11.916, 18.888

■ 21, 11.916, 18.888

19, 15.736, 20.227

23, 8.273, 17.817

17, 19.688, 21.894

25, 4.833, 16.931

15, 23.699, 23.979

28, 1.601, 16.119

14, 27.606, 26.281

30, 1.428, 195.872

13, 30.834, 27.417

32, 4.266, 195.264

11, 33.619, 27.371

35, 6.927, 194.828

11, 35.020, 27.135

37, 9.429, 194.465

40, 11.788,  
194.154

42, 14.018,  
193.885

# Harmonies

# Complementary

The Complementary color scheme is a pair of colors which are on the opposite of each other on the color wheel.



21, 11.916, 18.888



27, 9.786, 194.017

# Rectangle

The Rectangle color scheme consists of four colors that form a rectangle on the color wheel.



21, 11.916, 18.888



21, 11.916, 68.888



21, 11.916, 198.888



21, 11.916, 248.888

# Sweetspot

The Sweet Spot groups the original color and five complimentary colors.



21, 11.915, 18.892



35, 4.318, 16.633



22, 18.803, 324.681



17, 2.932, 16.676



71, 0.009, 296.813



19, 0.004, 296.813



# Same Dimension

The Same Dimension uses a secret algorithm to generate beautiful new colors.



21, 11.915, 18.892



26, 18.205, 20.015



24, 9.809, 66.244



12, 1.689, 16.397



18, 47.483, 33.617



47, 93.276, 38.689





# Inverse Universe

The Inverse Universe completely reimagines the original color for something new.



21, 11.915, 18.892



26, 18.205, 20.015



23, 8.751, 254.546



12, 1.689, 16.397



18, 47.483, 33.617

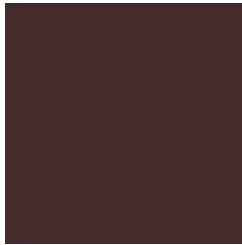


47, 93.276, 38.689



# Previews

## White Background



This preview shows how the CIELCh color 21, 11.916, 18.888 looks on a white background.

## Color Contrast Check

Large Text (above 18pt) WCAG AA ✓ Pass

Any Text WCAG AA ✓ Pass

Large Text (above 18pt) WCAG AAA ✓ Pass

Any Text WCAG AAA ✓ Pass

# Black Background



## Color Contrast Check

Large Text (above 18pt) WCAG AA × Fail

Any Text WCAG AA × Fail

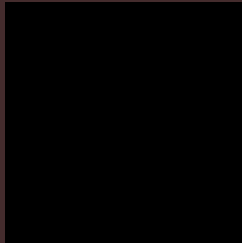
Large Text (above 18pt) WCAG AAA × Fail

Any Text WCAG AAA × Fail

If you want to check with other color combinations, try the [Color Contrast Checker](#).

**CIELCh 21, 11.916, 18.888**

## **Background**



This preview shows how black text looks on a background with the CIELCh color 21, 11.916, 18.888.

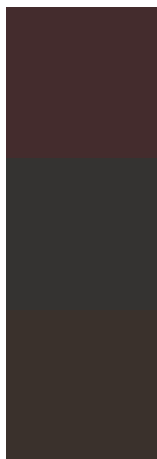


This preview shows how white text looks on a background with the CIELCh color 21, 11.916, 18.888.

# Color Blindness Simulation

Color vision deficiency is a very complex topic, and I could not describe the different causes any better than Wikipedia does, so if you want to learn more, you should check out their [article about color blindness](#).

## Dichromacy



### Original Color

21, 11.916, 18.888

### Protanopia

21, 1.419, 90.464

### Deuteranopia

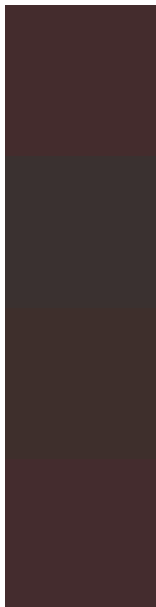
21, 5.594, 56.833



**Tritanopia**  
21, 11.890, 12.484



# Trichromacy



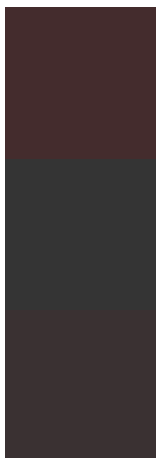
**Original Color**  
21, 11.916, 18.888

**Protanomaly**  
21, 4.389, 28.995

**Deuteranomaly**  
21, 7.758, 35.808

**Tritanomaly**  
21, 11.883, 15.689

# Monochromacy



**Original Color**  
21, 11.916, 18.888

**Achromatopsia**  
22, 0.004, 296.813

**Achromatomaly**  
21, 4.333, 11.374

# CSS Examples

## Text

The CSS property to change the color of the text to CIELCh 21, 11.916, 18.888 is called "color". The color property can be set on classes, ids or directly on the HTML element.

This example shows how text in the color `rgb(68, 44, 45)` looks like.

```
.text, #text, p{  
    color:rgb(68, 44, 45)  
}
```

If you want to add a text shadow in that color use the text-shadow property, you can generate a text shadow directly with our [CSS Text Shadow Generator](#).

Here you see how black text with a 4 pixel rgb(68, 44, 45) colored shadow looks like.

```
.shadow{ text-shadow: 4px 4px 2px rgb(68, 44, 45) }
```

## Border

The CSS property to change the border of an element to CIELCh 21, 11.916, 18.888 is called "border". The border property can be set on classes, ids or directly on the HTML element.

This example shows the color as border, it can be applied via the CSS property "border" or "border-color".

```
.border, #border, table{ border:4px solid rgb(68, 44, 45) }
```

If only the border color should be changed use the property border-color.

```
.border{ border-color:rgb(68, 44, 45) }
```

If you want to add a box shadow in that color use:

Here you see how a box with a 4 pixel rgb(68, 44, 45) colored shadow looks like.

```
.boxshadow{ -moz-box-shadow:4px 4px 4px  
4px rgb(68, 44, 45); -webkit-box-  
shadow:4px 4px 4px 4px rgb(68, 44, 45);  
box-shadow:4px 4px 4px 4px rgb(68, 44, 45)  
}
```

# Background

The CSS property to change the background color of an element to CIELCh 21, 11.916, 18.888 is called "background". The background property can be set on classes, ids or directly on the HTML element.

```
.background, #background, body{  
background: rgb(68, 44, 45) }
```

If only the background color should be changed can be used:

```
.background{ background-color: rgb(68, 44,  
45) }
```

This example shows the color as background, it is applied via the CSS property "background".

To optimize and compress your CSS code, you can use our [online CSS compressor and optimizer](#) based on csstidy. If you want to create a linear or radial gradient as background or border, check our [CSS Gradient Generator](#).

Hey! You found this booklet  
interesting? Support Converting  
Colors with the new Membership  
Option!

The pro membership hides all ads, plus gives you  
double the colors in the color bucket, and more  
awesome pro features!

**[Learn more, Memberships starting at \\$2.50/m!](#)**

**Follow me  
on Twitter!**

@ConvertingColor