

Converting Colors

CIELCh(21, 17.630, 8.518)

Have a look what the booklet for
CIELCh(21, 17.630, 8.518) contains.

CIELCh(21, 17.544, 8.557)	3
<i>Conversions</i>	4
<i>Details</i>	6
<i>Harmonies</i>	11
<i>Previews</i>	20
<i>Color Blindness Simulation</i>	23
<i>CSS Examples</i>	26

Color

CIELCh(21, 17.544, 8.557)

Conversions

Conversions Part 1

Format	Color
Hex	4B282F
RGB	75, 40, 47
RGB Percent	29%, 16%, 18%
CMY	0.7049, 0.8423, 0.8148
CMYK	0.00, 0.47, 0.37, 0.70
HSL	348°, 30%, 23%
HSV	348°, 47%, 30%
XYZ	4.2044, 3.2451, 3.1171
YIQ	51.2630, 18.6130, 9.5970

Conversions

Conversions Part 2

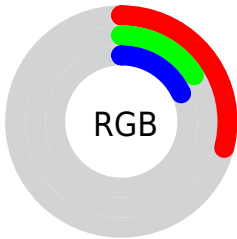
Format	Color
RYB	75, 40, 47
Decimal	4925487
CIELab	21.00, 17.35, 2.61
CIElCh	21, 17.544, 8.557
Yxy	3.2451, 0.3979, 0.3071
Android (android.graphics.Color)	4283115567 (0xFF4B282F)
YUV	51.2630, -2.1017, 20.8173
Hunter-Lab	18.0142, 10.1361, 2.3506

Details

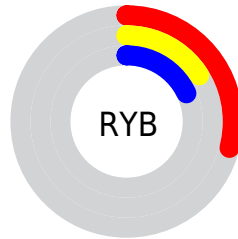
The CIELCh color **21, 17.544, 8.557** is a dark color, and the websafe version is hex **663333**. A complement of this color would be **29, 14.660, 179.227**, and the grayscale version is **21, 0.004, 296.813**.

A 20% lighter version of the original color is **41, 17.438, 8.130**, and **3, 13.893, 19.405** is the 20% darker color. If you saturate the color by 10%, you get **19, 21.514, 10.412**, and if you desaturate by 10%, it is **23, 13.566, 7.038**.

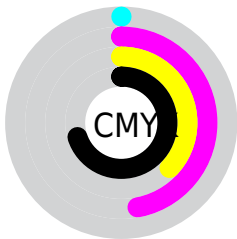
Distribution



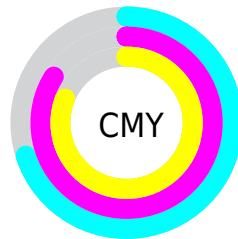
- Red (29%)
- Green (16%)
- Blue (18%)



- Red (29%)
- Yellow (16%)
- Blue (18%)



- Cyan (0%)
- Magenta (47%)
- Yellow (37%)
- Black (70%)



- Cyan (70%)
- Magenta (84%)
- Yellow (81%)

Brightness & Saturation Gradients

These gradients show how the CIELCh color 21, 17.544, 8.557 changes by changing the brightness by 10 percent. The first figure shows a shift by +10% for each color and the second figure -10%.

Similar to the brightness gradients but the following saturation gradients show a change of the CIELCh color 21, 17.544, 8.557 by changing the saturation by 10% instead.

■ 21, 17.544, 8.557 ■ 21, 17.544, 8.557

■ 100, 17.544, 8.557 ■ 11, 17.544, 8.557

■ 41, 17.544, 8.557 ■ 1, 17.544, 8.557

■ 51, 17.544, 8.557 ■ 0, 17.544, 8.557

■ 61, 17.544, 8.557

■ 71, 17.544, 8.557

■ 81, 17.544, 8.557

■ 91, 17.544, 8.557

■ 21, 17.544, 8.557 ■ 21, 17.544, 8.557

■ 19, 21.514, 10.412 ■ 23, 13.566, 7.038

17, 25.369, 12.694

26, 9.665, 5.766

16, 28.981, 15.517

28, 5.892, 4.681

14, 32.237, 18.985

30, 2.277, 3.695

13, 35.339, 21.698

33, 1.170, 183.225

13, 36.416, 22.116

35, 4.447, 182.363

38, 7.561, 181.714

40, 10.523,
181.143

43, 13.343,
180.629

Harmonies

Complementary

The Complementary color scheme is a pair of colors which are on the opposite of each other on the color wheel.



21, 17.544, 8.557



29, 14.660, 179.227

Rectangle

The Rectangle color scheme consists of four colors that form a rectangle on the color wheel.



21, 17.544, 8.557



21, 17.544, 58.557



21, 17.544, 188.557



21, 17.544, 238.557

Sweetspot

The Sweet Spot groups the original color and five complimentary colors.



21, 17.543, 8.560



37, 6.119, 4.477



21, 25.960, 320.629



17, 4.178, 4.590



72, 0.009, 296.813



20, 0.004, 296.813

Same Dimension

The Same Dimension uses a secret algorithm to generate beautiful new colors.



21, 17.543, 8.560



25, 26.294, 10.723



24, 14.638, 49.295



14, 1.978, 3.908



20, 46.150, 26.045



48, 86.461, 30.297

Inverse Universe

The Inverse Universe completely reimagines the original color for something new.



21, 17.543, 8.560



25, 26.294, 10.723



26, 11.219, 236.412



14, 1.978, 3.908



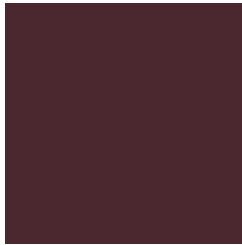
20, 46.150, 26.045



48, 86.461, 30.297

Previews

White Background



This preview shows how the CIE LCh color 21, 17.544, 8.557 looks on a white background.

Color Contrast Check

Large Text (above 18pt) WCAG AA ✓ Pass

Any Text WCAG AA ✓ Pass

Large Text (above 18pt) WCAG AAA ✓ Pass

Any Text WCAG AAA ✓ Pass

Black Background



This preview shows how the CIELCh color 21, 17.544, 8.557 looks on a black background.

Color Contrast Check

Large Text (above 18pt) WCAG AA × Fail

Any Text WCAG AA × Fail

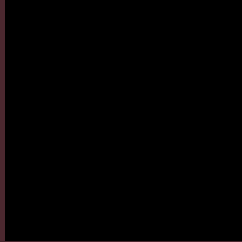
Large Text (above 18pt) WCAG AAA × Fail

Any Text WCAG AAA × Fail

If you want to check with other color combinations, try the [Color Contrast Checker](#).

CIELCh 21, 17.544, 8.557

Background



This preview shows how black text looks on a background with the CIELCh color 21, 17.544, 8.557.

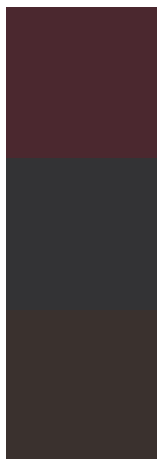


This preview shows how white text looks on a background with the CIELCh color 21, 17.544, 8.557.

Color Blindness Simulation

Color vision deficiency is a very complex topic, and I could not describe the different causes any better than Wikipedia does, so if you want to learn more, you should check out their [article about color blindness](#).

Dichromacy



Original Color

21, 17.544, 8.557

Protanopia

21, 1.352, 290.507

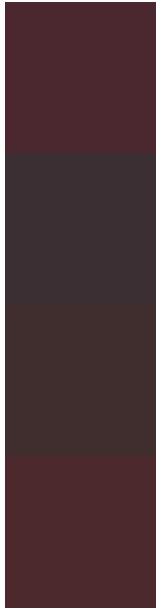
Deuteranopia

21, 4.841, 44.674



Tritanopia
21, 16.998, 16.832

Trichromacy



Original Color

21, 17.544, 8.557

Protanomaly

21, 6.718, 357.296

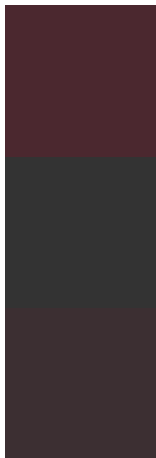
Deuteranomaly

21, 8.860, 21.293

Tritanomaly

21, 16.961, 14.597

Monochromacy



Original Color

21, 17.544, 8.557

Achromatopsia

21, 0.004, 296.813

Achromatomaly

21, 6.514, 2.812

CSS Examples

Text

The CSS property to change the color of the text to CIELCh 21, 17.544, 8.557 is called "color". The color property can be set on classes, ids or directly on the HTML element.

This example shows how text in the color `rgb(75, 40, 47)` looks like.

```
.text, #text, p{  
    color:rgb(75, 40, 47)  
}
```

If you want to add a text shadow in that color use the text-shadow property, you can generate a text shadow directly with our [CSS Text Shadow Generator](#).

Here you see how black text with a 4 pixel rgb(75, 40, 47) colored shadow looks like.

```
.shadow{ text-shadow: 4px 4px 2px rgb(75, 40, 47) }
```

Border

The CSS property to change the border of an element to CIELCh 21, 17.544, 8.557 is called "border". The border property can be set on classes, ids or directly on the HTML element.

This example shows the color as border, it can be applied via the CSS property "border" or "border-color".

```
.border, #border, table{ border:4px solid rgb(75, 40, 47) }
```

If only the border color should be changed use the property `border-color`.

```
.border{ border-color:rgb(75, 40, 47) }
```

If you want to add a box shadow in that color use:

Here you see how a box with a 4 pixel `rgb(75, 40, 47)` colored shadow looks like.

```
.boxshadow{ -moz-box-shadow:4px 4px 4px  
4px rgb(75, 40, 47); -webkit-box-  
shadow:4px 4px 4px 4px rgb(75, 40, 47);  
box-shadow:4px 4px 4px 4px rgb(75, 40, 47)  
}
```

Background

The CSS property to change the background color of an element to CIELCh 21, 17.544, 8.557 is called "background". The background property can be set on classes, ids or directly on the HTML element.

```
.background, #background, body{  
background: rgb(75, 40, 47) }
```

If only the background color should be changed can be used:

```
.background{ background-color: rgb(75, 40,  
47) }
```

This example shows the color as background, it is applied via the CSS property "background".

To optimize and compress your CSS code, you can use our [online CSS compressor and optimizer](#) based on csstidy. If you want to create a linear or radial gradient as background or border, check our [CSS Gradient Generator](#).

Hey! You found this booklet
interesting? Support Converting
Colors with the new Membership
Option!

The pro membership hides all ads, plus gives you
double the colors in the color bucket, and more
awesome pro features!

[Learn more, Memberships starting at \\$2.50/m!](#)

**Follow me
on Twitter!**

@ConvertingColor