

Converting Colors

CIELCh(22, 10.294, 15.076)

Have a look what the booklet for
CIELCh(22, 10.294, 15.076) contains.

CIELCh(22, 10.276, 14.237)	3
<i>Conversions</i>	4
<i>Details</i>	6
<i>Harmonies</i>	11
<i>Previews</i>	20
<i>Color Blindness Simulation</i>	23
<i>CSS Examples</i>	26

Color

CIELCh(22, 10.276, 14.237)

Conversions

Conversions Part 1

Format	Color
Hex	442F31
RGB	68, 47, 49
RGB Percent	27%, 18%, 19%
CMY	0.7323, 0.8147, 0.8069
CMYK	0.00, 0.31, 0.28, 0.73
HSL	354°, 18%, 23%
HSV	354°, 31%, 27%
XYZ	3.9887, 3.5154, 3.4016
YIQ	53.5070, 11.8740, 5.0740

Conversions

Conversions Part 2

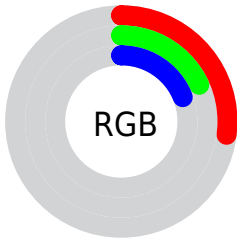
Format	Color
RYB	68, 47, 49
Decimal	4468529
CIELab	22.00, 9.96, 2.53
CIELCh	22, 10.276, 14.237
Yxy	3.5154, 0.3657, 0.3223
Android (android.graphics.Color)	4282658609 (0xFF442F31)
YUV	53.5070, -2.2220, 12.7104
Hunter-Lab	18.7494, 5.1618, 2.3679

Details

The CIELCh color **22, 10.276, 14.237** is a dark color, and the websafe version is hex **333333**. A complement of this color would be **27, 8.842, 189.489**, and the grayscale version is **23, 0.004, 296.813**.

A 20% lighter version of the original color is **42, 10.428, 14.228**, and **2, 10.025, 17.100** is the 20% darker color. If you saturate the color by 10%, you get **20, 13.963, 15.527**, and if you desaturate by 10%, it is **24, 6.747, 13.179**.

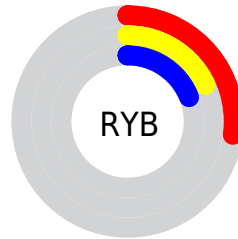
Distribution



Red (27%)

Green (18%)

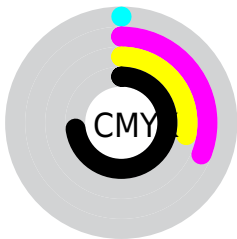
Blue (19%)



Red (27%)

Yellow (18%)

Blue (19%)

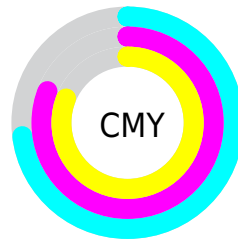


Cyan (0%)

Magenta (31%)

Yellow (28%)

Black (73%)



Cyan (73%)

Magenta (81%)

Yellow (81%)

Brightness & Saturation Gradients

These gradients show how the CIELCh color 22, 10.276, 14.237 changes by changing the brightness by 10 percent. The first figure shows a shift by +10% for each color and the second figure -10%.

Similar to the brightness gradients but the following saturation gradients show a change of the CIELCh color 22, 10.276, 14.237 by changing the saturation by 10% instead.

■ 22, 10.276, 14.237

■ 22, 10.276, 14.237

■ 100, 10.276,
14.237

■ 12, 10.276, 14.237

■ 42, 10.276, 14.237

■ 2, 10.276, 14.237

■ 52, 10.276, 14.237

■ 0, 10.276, 14.237

■ 62, 10.276, 14.237

■ 72, 10.276, 14.237

■ 82, 10.276, 14.237

■ 92, 10.276, 14.237

■ 22, 10.276, 14.237

■ 22, 10.276, 14.237

■ 20, 13.963, 15.527

■ 24, 6.747, 13.179

■ 18, 17.768, 17.105

■ 26, 3.401, 12.269

■ 16, 21.623, 19.059

■ 29, 0.241, 10.572

■ 14, 25.436, 21.482

■ 31, 2.735, 191.071

■ 13, 28.998, 23.990

■ 33, 5.538, 190.484

■ 12, 31.937, 25.252

■ 36, 8.182, 189.996

■ 11, 34.559, 24.949

■ 38, 10.680,
189.573

■ 41, 13.047,
189.198

■ 43, 15.296,
188.864

Harmonies

Complementary

The Complementary color scheme is a pair of colors which are on the opposite of each other on the color wheel.



22, 10.276, 14.237



27, 8.842, 189.489

Rectangle

The Rectangle color scheme consists of four colors that form a rectangle on the color wheel.



22, 10.276, 14.237



22, 10.276, 64.237



22, 10.276, 194.237



22, 10.276, 244.237

Sweetspot

The Sweet Spot groups the original color and five complimentary colors.



22, 10.275, 14.242



35, 3.531, 12.147



22, 16.254, 323.026



17, 2.480, 12.215



71, 0.009, 296.813



19, 0.004, 296.813

Same Dimension

The Same Dimension uses a secret algorithm to generate beautiful new colors.



22, 10.275, 14.242



28, 15.740, 15.216



24, 8.388, 61.142



12, 1.700, 12.067



18, 46.496, 31.414



47, 90.895, 36.642

Inverse Universe

The Inverse Universe completely reimagines the original color for something new.



22, 10.275, 14.242



28, 15.740, 15.216



24, 7.427, 247.560



12, 1.700, 12.067



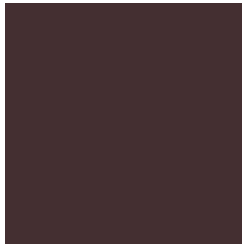
18, 46.496, 31.414



47, 90.895, 36.642

Previews

White Background



This preview shows how the CIE LCh color 22, 10.276, 14.237 looks on a white background.

Color Contrast Check

Large Text (above 18pt) WCAG AA ✓ Pass

Any Text WCAG AA ✓ Pass

Large Text (above 18pt) WCAG AAA ✓ Pass

Any Text WCAG AAA ✓ Pass

Black Background



This preview shows how the CIELCh color 22, 10.276, 14.237 looks on a black background.

Color Contrast Check

Large Text (above 18pt) WCAG AA × Fail

Any Text WCAG AA × Fail

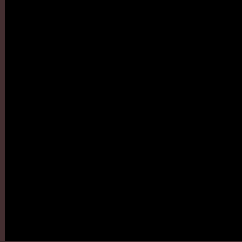
Large Text (above 18pt) WCAG AAA × Fail

Any Text WCAG AAA × Fail

If you want to check with other color combinations, try the [Color Contrast Checker](#).

CIELCh 22, 10.276, 14.237

Background



This preview shows how black text looks on a background with the CIELCh color 22, 10.276, 14.237.

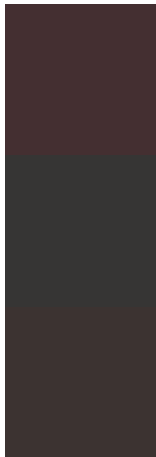


This preview shows how white text looks on a background with the CIELCh color 22, 10.276, 14.237.

Color Blindness Simulation

Color vision deficiency is a very complex topic, and I could not describe the different causes any better than Wikipedia does, so if you want to learn more, you should check out their [article about color blindness](#).

Dichromacy



Original Color

22, 10.276, 14.237

Protanopia

22, 0.808, 74.860

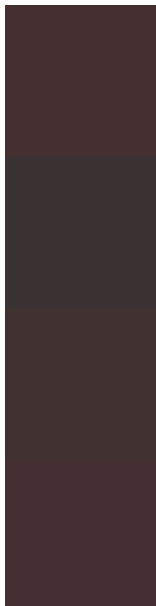
Deuteranopia

22, 4.537, 37.228



Tritanopia
22, 10.395, 6.927

Trichromacy



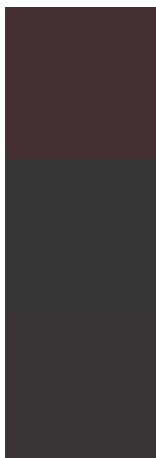
Original Color
22, 10.276, 14.237

Protanomaly
22, 3.794, 20.109

Deuteranomaly
22, 6.333, 26.639

Tritanomaly
22, 10.313, 10.560

Monochromacy



Original Color
22, 10.276, 14.237

Achromatopsia
23, 0.004, 296.813

Achromatomaly
22, 3.301, 19.992

CSS Examples

Text

The CSS property to change the color of the text to CIELCh 22, 10.276, 14.237 is called "color". The color property can be set on classes, ids or directly on the HTML element.

This example shows how text in the color `rgb(68, 47, 49)` looks like.

```
.text, #text, p{  
    color:rgb(68, 47, 49)  
}
```

If you want to add a text shadow in that color use the text-shadow property, you can generate a text shadow directly with our [CSS Text Shadow Generator](#).

Here you see how black text with a 4 pixel rgb(68, 47, 49) colored shadow looks like.

```
.shadow{ text-shadow: 4px 4px 2px rgb(68, 47, 49) }
```

Border

The CSS property to change the border of an element to CIELCh 22, 10.276, 14.237 is called "border". The border property can be set on classes, ids or directly on the HTML element.

This example shows the color as border, it can be applied via the CSS property "border" or "border-color".

```
.border, #border, table{ border:4px solid rgb(68, 47, 49) }
```

If only the border color should be changed use the property border-color.

```
.border{ border-color:rgb(68, 47, 49) }
```

If you want to add a box shadow in that color use:

Here you see how a box with a 4 pixel rgb(68, 47, 49) colored shadow looks like.

```
.boxshadow{ -moz-box-shadow:4px 4px 4px  
4px rgb(68, 47, 49); -webkit-box-  
shadow:4px 4px 4px 4px rgb(68, 47, 49);  
box-shadow:4px 4px 4px 4px rgb(68, 47, 49)  
}
```

Background

The CSS property to change the background color of an element to CIELCh 22, 10.276, 14.237 is called "background". The background property can be set on classes, ids or directly on the HTML element.

```
.background, #background, body{  
background: rgb(68, 47, 49) }
```

If only the background color should be changed can be used:

```
.background{ background-color: rgb(68, 47,  
49) }
```

This example shows the color as background, it is applied via the CSS property "background".

To optimize and compress your CSS code, you can use our [online CSS compressor and optimizer](#) based on csstidy. If you want to create a linear or radial gradient as background or border, check our [CSS Gradient Generator](#).

Hey! You found this booklet interesting? Support Converting Colors with the new Membership Option!

The pro membership hides all ads, plus gives you double the colors in the color bucket, and more awesome pro features!

[Learn more, Memberships starting at \\$2.50/m!](#)

**Follow me
on Twitter!**

@ConvertingColor