

Converting Colors

CIELCh(22, 11.160, 2.568)

Have a look what the booklet for
CIELCh(22, 11.160, 2.568) contains.

CIELCh(22, 10.982, 4.304)	3
<i>Conversions</i>	4
<i>Details</i>	6
<i>Harmonies</i>	11
<i>Previews</i>	20
<i>Color Blindness Simulation</i>	23
<i>CSS Examples</i>	26

Color

CIELCh(22, 10.982, 4.304)

Conversions

Conversions Part 1

Format	Color
Hex	452F34
RGB	69, 47, 52
RGB Percent	27%, 18%, 20%
CMY	0.7304, 0.8166, 0.7970
CMYK	0.00, 0.32, 0.25, 0.73
HSL	346°, 19%, 23%
HSV	346°, 32%, 27%
XYZ	4.0573, 3.5154, 3.6850
YIQ	54.1480, 11.5070, 6.2190

Conversions

Conversions Part 2

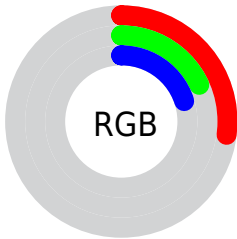
Format	Color
RYB	69, 47, 52
Decimal	4534068
CIELab	22.00, 10.95, 0.82
CIELCh	22, 10.982, 4.304
Yxy	3.5154, 0.3604, 0.3123
Android (android.graphics.Color)	4282724148 (0xFF452F34)
YUV	54.1480, -1.0590, 13.0252
Hunter-Lab	18.7494, 5.8150, 1.4717

Details

The CIELCh color **22, 10.982, 4.304** is a dark color, and the websafe version is hex **333333**. A complement of this color would be **27, 9.861, 178.508**, and the grayscale version is **23, 0.004, 296.813**.

A 20% lighter version of the original color is **42, 11.090, 5.286**, and **2, 10.912, 6.594** is the 20% darker color. If you saturate the color by 10%, you get **20, 14.638, 5.665**, and if you desaturate by 10%, it is **24, 7.406, 3.154**.

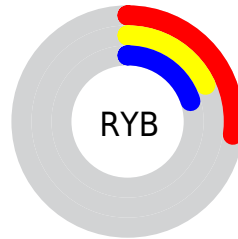
Distribution



 Red (27%)

 Green (18%)

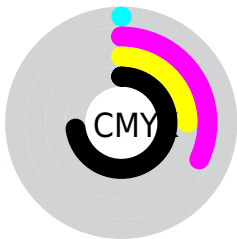
 Blue (20%)



 Red (27%)

 Yellow (18%)

 Blue (20%)

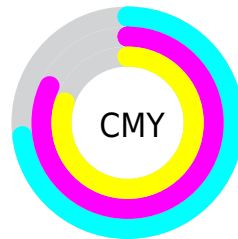


 Cyan (0%)

 Magenta (32%)

 Yellow (25%)

 Black (73%)



 Cyan (73%)

 Magenta (82%)

 Yellow (80%)

Brightness & Saturation Gradients

These gradients show how the CIELCh color 22, 10.982, 4.304 changes by changing the brightness by 10 percent. The first figure shows a shift by +10% for each color and the second figure -10%.

Similar to the brightness gradients but the following saturation gradients show a change of the CIELCh color 22, 10.982, 4.304 by changing the saturation by 10% instead.

■ 22, 10.982, 4.304

■ 22, 10.982, 4.304

■ 100, 10.982, 4.304

■ 12, 10.982, 4.304

■ 42, 10.982, 4.304

■ 2, 10.982, 4.304

■ 52, 10.982, 4.304

■ 0, 10.982, 4.304

■ 62, 10.982, 4.304

■ 72, 10.982, 4.304

■ 82, 10.982, 4.304

■ 92, 10.982, 4.304

■ 22, 10.982, 4.304

■ 22, 10.982, 4.304

■ 20, 14.638, 5.665

■ 24, 7.406, 3.154

18, 18.313, 7.291

26, 3.952, 2.144

16, 21.916, 9.270

29, 0.639, 0.980

15, 25.335, 11.703

31, 2.526, 180.687

13, 28.451, 14.703

33, 5.543, 179.964

12, 31.316, 17.767

36, 8.419, 179.346

11, 33.701, 18.830

38, 11.164,
178.791

40, 13.786,
178.288

43, 16.297,
177.827

Harmonies

Complementary

The Complementary color scheme is a pair of colors which are on the opposite of each other on the color wheel.



22, 10.982, 4.304



27, 9.861, 178.508

Rectangle

The Rectangle color scheme consists of four colors that form a rectangle on the color wheel.



22, 10.982, 4.304



22, 10.982, 54.304



22, 10.982, 184.304



22, 10.982, 234.304

Sweetspot

The Sweet Spot groups the original color and five complimentary colors.



22, 10.981, 4.308



35, 4.085, 1.993



22, 16.441, 319.035



17, 2.815, 2.056



71, 0.009, 296.813



19, 0.004, 296.813

Same Dimension

The Same Dimension uses a secret algorithm to generate beautiful new colors.



22, 10.981, 4.308



27, 16.405, 5.312



24, 8.941, 46.203



12, 1.767, 1.805



18, 43.746, 23.438



47, 83.422, 28.102

Inverse Universe

The Inverse Universe completely reimagines the original color for something new.



22, 10.981, 4.308



27, 16.405, 5.312



25, 7.469, 229.729



12, 1.767, 1.805



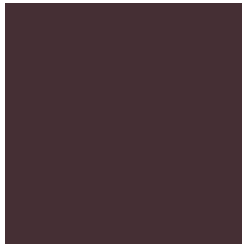
18, 43.746, 23.438



47, 83.422, 28.102

Previews

White Background



This preview shows how the CIE LCh color 22, 10.982, 4.304 looks on a white background.

Color Contrast Check

Large Text (above 18pt) WCAG AA ✓ Pass

Any Text WCAG AA ✓ Pass

Large Text (above 18pt) WCAG AAA ✓ Pass

Any Text WCAG AAA ✓ Pass

Black Background



This preview shows how the CIELCh color 22, 10.982, 4.304 looks on a black background.

Color Contrast Check

Large Text (above 18pt) WCAG AA × Fail

Any Text WCAG AA × Fail

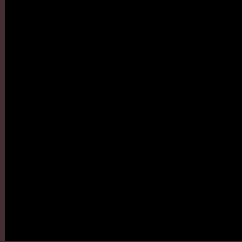
Large Text (above 18pt) WCAG AAA × Fail

Any Text WCAG AAA × Fail

If you want to check with other color combinations, try the [Color Contrast Checker](#).

CIELCh 22, 10.982, 4.304

Background



This preview shows how black text looks on a background with the CIELCh color 22, 10.982, 4.304.

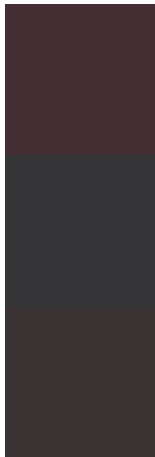


This preview shows how white text looks on a background with the CIELCh color 22, 10.982, 4.304.

Color Blindness Simulation

Color vision deficiency is a very complex topic, and I could not describe the different causes any better than Wikipedia does, so if you want to learn more, you should check out their [article about color blindness](#).

Dichromacy



Original Color

22, 10.982, 4.304

Protanopia

22, 1.344, 290.498

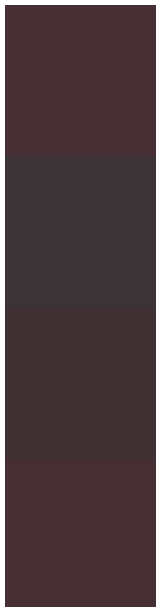
Deuteranopia

22, 3.794, 20.109



Tritanopia
22, 10.869, 7.716

Trichromacy



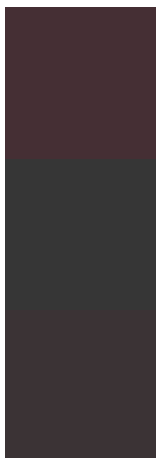
Original Color
22, 10.982, 4.304

Protanomaly
22, 4.240, 352.025

Deuteranomaly
22, 6.812, 9.559

Tritanomaly
22, 10.869, 7.716

Monochromacy



Original Color
22, 10.982, 4.304

Achromatopsia
23, 0.004, 296.813

Achromatomaly
22, 3.984, 0.597

CSS Examples

Text

The CSS property to change the color of the text to CIELCh 22, 10.982, 4.304 is called "color". The color property can be set on classes, ids or directly on the HTML element.

This example shows how text in the color `rgb(69, 47, 52)` looks like.

```
.text, #text, p{  
    color:rgb(69, 47, 52)  
}
```

If you want to add a text shadow in that color use the text-shadow property, you can generate a text shadow directly with our [CSS Text Shadow Generator](#).

Here you see how black text with a 4 pixel rgb(69, 47, 52) colored shadow looks like.

```
.shadow{ text-shadow: 4px 4px 2px rgb(69, 47, 52) }
```

Border

The CSS property to change the border of an element to CIELCh 22, 10.982, 4.304 is called "border". The border property can be set on classes, ids or directly on the HTML element.

This example shows the color as border, it can be applied via the CSS property "border" or "border-color".

```
.border, #border, table{ border:4px solid rgb(69, 47, 52) }
```

If only the border color should be changed use the property border-color.

```
.border{ border-color:rgb(69, 47, 52) }
```

If you want to add a box shadow in that color use:

Here you see how a box with a 4 pixel rgb(69, 47, 52) colored shadow looks like.

```
.boxshadow{ -moz-box-shadow:4px 4px 4px  
4px rgb(69, 47, 52); -webkit-box-  
shadow:4px 4px 4px 4px rgb(69, 47, 52);  
box-shadow:4px 4px 4px 4px rgb(69, 47, 52)  
}
```

Background

The CSS property to change the background color of an element to CIELCh 22, 10.982, 4.304 is called "background". The background property can be set on classes, ids or directly on the HTML element.

```
.background, #background, body{  
background: rgb(69, 47, 52) }
```

If only the background color should be changed can be used:

```
.background{ background-color: rgb(69, 47,  
52) }
```

This example shows the color as background, it is applied via the CSS property "background".

To optimize and compress your CSS code, you can use our [online CSS compressor and optimizer](#) based on csstidy. If you want to create a linear or radial gradient as background or border, check our [CSS Gradient Generator](#).

Hey! You found this booklet interesting? Support Converting Colors with the new Membership Option!

The pro membership hides all ads, plus gives you double the colors in the color bucket, and more awesome pro features!

[Learn more, Memberships starting at \\$2.50/m!](#)

**Follow me
on Twitter!**

@ConvertingColor