

Converting Colors

CIELCh(22, 11.739, 25.489)

Have a look what the booklet for
CIELCh(22, 11.739, 25.489) contains.

CIELCh(22, 11.454, 25.086)	3
<i>Conversions</i>	4
<i>Details</i>	6
<i>Harmonies</i>	11
<i>Previews</i>	20
<i>Color Blindness Simulation</i>	23
<i>CSS Examples</i>	26

Color

CIELCh(22, 11.454, 25.086)

Conversions

Conversions Part 1

Format	Color
Hex	462F2E
RGB	70, 47, 46
RGB Percent	27%, 18%, 18%
CMY	0.7261, 0.8162, 0.8201
CMYK	0.00, 0.33, 0.34, 0.73
HSL	3°, 21%, 23%
HSV	3°, 34%, 27%
XYZ	4.0172, 3.5154, 3.0381
YIQ	53.7630, 14.0290, 4.5650

Conversions

Conversions Part 2

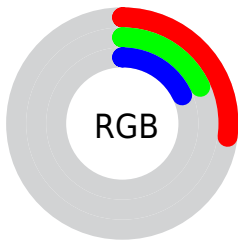
Format	Color
RYB	70, 47, 46
Decimal	4599598
CIELab	22.00, 10.37, 4.86
CIElCh	22, 11.454, 25.086
Yxy	3.5154, 0.3800, 0.3326
Android (android.graphics.Color)	4282789678 (0xFF462F2E)
YUV	53.7630, -3.8272, 14.2398
Hunter-Lab	18.7494, 5.4334, 3.5175

Details

The CIELCh color **22, 11.454, 25.086** is a dark color, and the websafe version is hex **333333**. A complement of this color would be **27, 9.251, 202.031**, and the grayscale version is **22, 0.004, 296.813**.

A 20% lighter version of the original color is **42, 11.401, 23.899**, and **2, 10.608, 19.405** is the 20% darker color. If you saturate the color by 10%, you get **20, 15.292, 26.135**, and if you desaturate by 10%, it is **24, 7.838, 24.276**.

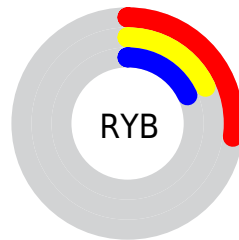
Distribution



Red (27%)

Green (18%)

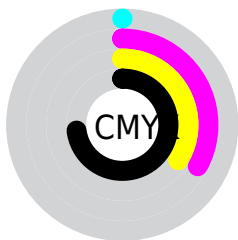
Blue (18%)



Red (27%)

Yellow (18%)

Blue (18%)

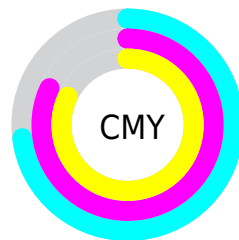


Cyan (0%)

Magenta (33%)

Yellow (34%)

Black (73%)



Cyan (73%)

Magenta (82%)

Yellow (82%)

Brightness & Saturation Gradients

These gradients show how the CIELCh color 22, 11.454, 25.086 changes by changing the brightness by 10 percent. The first figure shows a shift by +10% for each color and the second figure -10%.

Similar to the brightness gradients but the following saturation gradients show a change of the CIELCh color 22, 11.454, 25.086 by changing the saturation by 10% instead.

■ 22, 11.454, 25.086

■ 22, 11.454, 25.086

■ 100, 11.454,
25.086

■ 12, 11.454, 25.086

■ 42, 11.454, 25.086

■ 2, 11.454, 25.086

■ 52, 11.454, 25.086

■ 0, 11.454, 25.086

■ 62, 11.454, 25.086

■ 72, 11.454, 25.086

■ 82, 11.454, 25.086

■ 92, 11.454, 25.086

■ 22, 11.454, 25.086

■ 22, 11.454, 25.086

■ 20, 15.292, 26.135

■ 24, 7.838, 24.276

■ 18, 19.327, 27.470

■ 26, 4.455, 23.628

■ 16, 23.503, 29.159

■ 29, 1.300, 23.005

■ 15, 27.633, 30.891

■ 31, 1.638, 202.996

■ 13, 31.033, 31.229

■ 33, 4.377, 202.610

■ 12, 33.796, 31.247

■ 36, 6.936, 202.368

■ 12, 35.387, 31.175

■ 38, 9.333, 202.191

■ 40, 11.585,
202.058

■ 43, 13.709,
201.958

Harmonies

Complementary

The Complementary color scheme is a pair of colors which are on the opposite of each other on the color wheel.



22, 11.454, 25.086



27, 9.251, 202.031

Rectangle

The Rectangle color scheme consists of four colors that form a rectangle on the color wheel.



22, 11.454, 25.086



22, 11.454, 75.086



22, 11.454, 205.086



22, 11.454, 255.086

Sweetspot

The Sweet Spot groups the original color and five complimentary colors.



22, 11.453, 25.091



36, 3.843, 23.402



23, 18.538, 327.025



17, 2.589, 23.437



71, 0.009, 296.813



19, 0.004, 296.813

Same Dimension

The Same Dimension uses a secret algorithm to generate beautiful new colors.



22, 11.453, 25.091



28, 17.646, 25.947



26, 10.106, 75.033



13, 1.727, 23.298



19, 48.771, 36.810



48, 95.231, 40.339

Inverse Universe

The Inverse Universe completely reimagines the original color for something new.



27, 9.251, 202.031



36, 13.422, 201.881



24, 9.452, 263.813



14, 1.645, 202.823



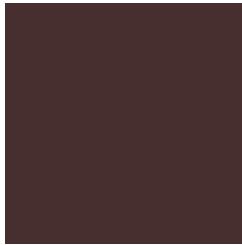
36, 23.815, 202.804



79, 43.342, 203.313

Previews

White Background



This preview shows how the CIELCh color 22, 11.454, 25.086 looks on a white background.

Color Contrast Check

Large Text (above 18pt) WCAG AA ✓ Pass

Any Text WCAG AA ✓ Pass

Large Text (above 18pt) WCAG AAA ✓ Pass

Any Text WCAG AAA ✓ Pass

Black Background



This preview shows how the CIELCh color 22, 11.454, 25.086 looks on a black background.

Color Contrast Check

Large Text (above 18pt) WCAG AA × Fail

Any Text WCAG AA × Fail

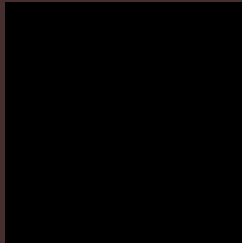
Large Text (above 18pt) WCAG AAA × Fail

Any Text WCAG AAA × Fail

If you want to check with other color combinations, try the [Color Contrast Checker](#).

CIELCh 22, 11.454, 25.086

Background



This preview shows how black text looks on a background with the CIELCh color 22, 11.454, 25.086.

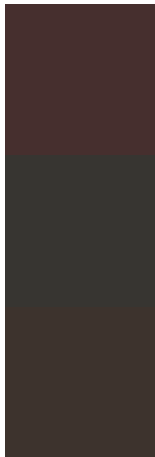


This preview shows how white text looks on a background with the CIELCh color 22, 11.454, 25.086.

Color Blindness Simulation

Color vision deficiency is a very complex topic, and I could not describe the different causes any better than Wikipedia does, so if you want to learn more, you should check out their [article about color blindness](#).

Dichromacy



Original Color

22, 11.454, 25.086

Protanopia

22, 2.830, 89.943

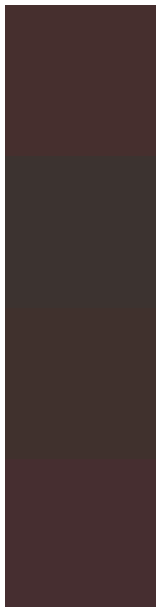
Deuteranopia

22, 6.391, 58.720



Tritanopia
22, 11.859, 9.185

Trichromacy



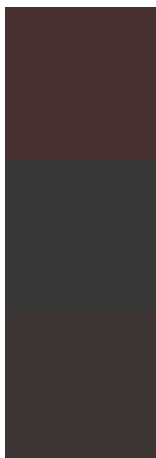
Original Color
22, 11.454, 25.086

Protanomaly
22, 4.805, 44.688

Deuteranomaly
22, 7.952, 40.269

Tritanomaly
22, 11.799, 15.585

Monochromacy



Original Color
22, 11.454, 25.086

Achromatopsia
23, 0.004, 296.813

Achromatomaly
22, 4.278, 20.213

CSS Examples

Text

The CSS property to change the color of the text to CIELCh 22, 11.454, 25.086 is called "color". The color property can be set on classes, ids or directly on the HTML element.

This example shows how text in the color `rgb(70, 47, 46)` looks like.

```
.text, #text, p{  
    color:rgb(70, 47, 46)  
}
```

If you want to add a text shadow in that color use the text-shadow property, you can generate a text shadow directly with our [CSS Text Shadow Generator](#).

Here you see how black text with a 4 pixel rgb(70, 47, 46) colored shadow looks like.

```
.shadow{ text-shadow: 4px 4px 2px rgb(70, 47, 46) }
```

Border

The CSS property to change the border of an element to CIELCh 22, 11.454, 25.086 is called "border". The border property can be set on classes, ids or directly on the HTML element.

This example shows the color as border, it can be applied via the CSS property "border" or "border-color".

```
.border, #border, table{ border:4px solid rgb(70, 47, 46) }
```

If only the border color should be changed use the property border-color.

```
.border{ border-color:rgb(70, 47, 46) }
```

If you want to add a box shadow in that color use:

Here you see how a box with a 4 pixel rgb(70, 47, 46) colored shadow looks like.

```
.boxshadow{ -moz-box-shadow:4px 4px 4px  
4px rgb(70, 47, 46); -webkit-box-  
shadow:4px 4px 4px 4px rgb(70, 47, 46);  
box-shadow:4px 4px 4px 4px rgb(70, 47, 46)  
}
```

Background

The CSS property to change the background color of an element to CIELCh 22, 11.454, 25.086 is called "background". The background property can be set on classes, ids or directly on the HTML element.

```
.background, #background, body{  
background: rgb(70, 47, 46) }
```

If only the background color should be changed can be used:

```
.background{ background-color: rgb(70, 47,  
46) }
```

This example shows the color as background, it is applied via the CSS property "background".

To optimize and compress your CSS code, you can use our [online CSS compressor and optimizer](#) based on csstidy. If you want to create a linear or radial gradient as background or border, check our [CSS Gradient Generator](#).

Hey! You found this booklet
interesting? Support Converting
Colors with the new Membership
Option!

The pro membership hides all ads, plus gives you
double the colors in the color bucket, and more
awesome pro features!

[Learn more, Memberships starting at \\$2.50/m!](#)

**Follow me
on Twitter!**

@ConvertingColor