

Converting Colors

CIELCh(22, 12.526, 67.097)

Have a look what the booklet for
CIELCh(22, 12.526, 67.097) contains.

CIELCh(22, 12.326, 68.768)	3
<i>Conversions</i>	4
<i>Details</i>	6
<i>Harmonies</i>	11
<i>Previews</i>	20
<i>Color Blindness Simulation</i>	23
<i>CSS Examples</i>	26

Color

CIELCh(22, 12.326, 68.768)

Conversions

Conversions Part 1

Format	Color
Hex	413224
RGB	65, 50, 36
RGB Percent	25%, 20%, 14%
CMY	0.7457, 0.8044, 0.8593
CMYK	0.00, 0.23, 0.45, 0.75
HSL	29°, 29%, 20%
HSV	29°, 45%, 25%
XYZ	3.6220, 3.5154, 2.1465
YIQ	52.8890, 13.4340, -1.1740

Conversions

Conversions Part 2

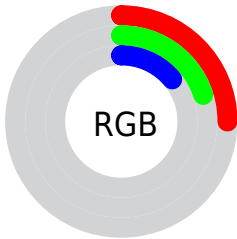
Format	Color
RYB	65, 63, 36
Decimal	4272676
CIELab	22.00, 4.46, 11.49
CIELCh	22, 12.326, 68.768
Yxy	3.5154, 0.3901, 0.3787
Android (android.graphics.Color)	4282462756 (0xFF413224)
YUV	52.8890, -8.3263, 10.6213
Hunter-Lab	18.7494, 1.6708, 6.3370

Details

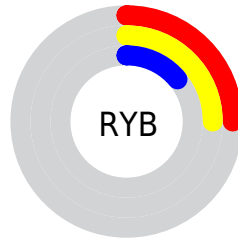
The CIELCh color **22, 12.326, 68.768** is a dark color, and the websafe version is hex **333333**. A complement of this color would be **20, 10.889, 260.179**, and the grayscale version is **22, 0.004, 296.813**.

A 20% lighter version of the original color is **42, 12.229, 67.152**, and **2, 5.501, 36.451** is the 20% darker color. If you saturate the color by 10%, you get **21, 15.413, 67.699**, and if you desaturate by 10%, it is **23, 9.358, 69.845**.

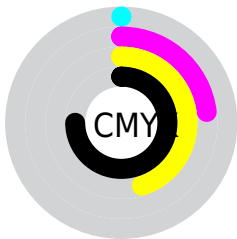
Distribution



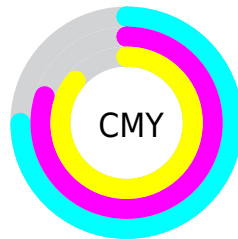
- Red (25%)
- Green (20%)
- Blue (14%)



- Red (25%)
- Yellow (25%)
- Blue (14%)



- Cyan (0%)
- Magenta (23%)
- Yellow (45%)
- Black (75%)



- Cyan (75%)
- Magenta (80%)
- Yellow (86%)


Brightness & Saturation Gradients

These gradients show how the CIELCh color 22, 12.326, 68.768 changes by changing the brightness by 10 percent. The first figure shows a shift by +10% for each color and the second figure -10%.

Similar to the brightness gradients but the following saturation gradients show a change of the CIELCh color 22, 12.326, 68.768 by changing the saturation by 10% instead.

 22, 12.326, 68.768

 22, 12.326, 68.768

 100, 12.326,
68.768

 12, 12.326, 68.768

 42, 12.326, 68.768

 2, 12.326, 68.768

 52, 12.326, 68.768

 0, 12.326, 68.768

 62, 12.326, 68.768

 72, 12.326, 68.768

 82, 12.326, 68.768

 92, 12.326, 68.768

 22, 12.326, 68.768

 22, 12.326, 68.768

■ 21, 15.413, 67.699

■ 23, 9.358, 69.845

■ 20, 18.599, 66.612

■ 24, 6.514, 70.909

■ 19, 21.786, 65.427

■ 26, 3.792, 71.956

■ 18, 24.287, 63.420

■ 27, 1.183, 72.910

■ 17, 26.406, 61.208

■ 28, 1.320, 254.221

■ 16, 27.541, 60.204

■ 29, 3.727, 255.150

■ 31, 6.047, 256.120

■ 32, 8.290, 257.069

■ 33, 10.464,
257.991

Harmonies

Complementary

The Complementary color scheme is a pair of colors which are on the opposite of each other on the color wheel.



22, 12.326, 68.768



20, 10.889, 260.179

Rectangle

The Rectangle color scheme consists of four colors that form a rectangle on the color wheel.



22, 12.326, 68.768



22, 12.326, 118.768



22, 12.326, 248.768



22, 12.326, 298.768

Sweetspot

The Sweet Spot groups the original color and five complimentary colors.



22, 12.326, 68.774



34, 4.157, 72.073



18, 16.909, 345.608



16, 2.942, 71.955



70, 0.009, 296.813



18, 0.003, 296.813

Same Dimension

The Same Dimension uses a secret algorithm to generate beautiful new colors.



22, 12.326, 68.774



28, 18.963, 67.526



26, 17.891, 104.924



12, 1.442, 72.571



25, 40.821, 61.068



59, 78.189, 58.686

Inverse Universe

The Inverse Universe completely reimagines the original color for something new.



20, 10.889, 260.179



25, 16.161, 262.785



16, 19.663, 294.154



12, 1.416, 254.563



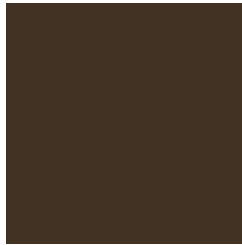
21, 32.373, 279.152



49, 64.133, 282.965

Previews

White Background



This preview shows how the CIELCh color 22, 12.326, 68.768 looks on a white background.

Color Contrast Check

Large Text (above 18pt) WCAG AA ✓ Pass

Any Text WCAG AA ✓ Pass

Large Text (above 18pt) WCAG AAA ✓ Pass

Any Text WCAG AAA ✓ Pass

Black Background



This preview shows how the CIELCh color 22, 12.326, 68.768 looks on a black background.

Color Contrast Check

Large Text (above 18pt) WCAG AA × Fail

Any Text WCAG AA × Fail

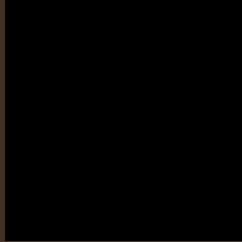
Large Text (above 18pt) WCAG AAA × Fail

Any Text WCAG AAA × Fail

If you want to check with other color combinations, try the [Color Contrast Checker](#).

CIELCh 22, 12.326, 68.768

Background



This preview shows how black text looks on a background with the CIELCh color 22, 12.326, 68.768.

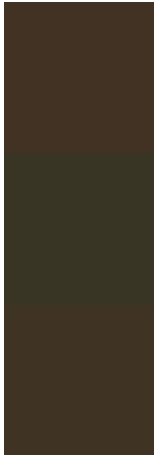


This preview shows how white text looks on a background with the CIELCh color 22, 12.326, 68.768.

Color Blindness Simulation

Color vision deficiency is a very complex topic, and I could not describe the different causes any better than Wikipedia does, so if you want to learn more, you should check out their [article about color blindness](#).

Dichromacy



Original Color

22, 12.326, 68.768

Protanopia

22, 10.829, 96.895

Deuteranopia

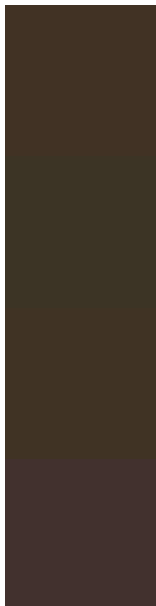
22, 11.877, 76.302



Tritanopia

22, 8.960, 4.101

Trichromacy



Original Color

22, 12.326, 68.768

Protanomaly

22, 10.841, 85.640

Deuteranomaly

22, 12.176, 74.242

Tritanomaly

22, 8.683, 34.229

Monochromacy



Original Color

22, 12.326, 68.768

Achromatopsia

22, 0.004, 296.813

Achromatomaly

22, 4.126, 73.548

CSS Examples

Text

The CSS property to change the color of the text to CIELCh 22, 12.326, 68.768 is called "color". The color property can be set on classes, ids or directly on the HTML element.

This example shows how text in the color `rgb(65, 50, 36)` looks like.

```
.text, #text, p{  
    color:rgb(65, 50, 36)  
}
```

If you want to add a text shadow in that color use the text-shadow property, you can generate a text shadow directly with our [CSS Text Shadow Generator](#).

Here you see how black text with a 4 pixel rgb(65, 50, 36) colored shadow looks like.

```
.shadow{ text-shadow: 4px 4px 2px rgb(65, 50, 36) }
```

Border

The CSS property to change the border of an element to CIELCh 22, 12.326, 68.768 is called "border". The border property can be set on classes, ids or directly on the HTML element.

This example shows the color as border, it can be applied via the CSS property "border" or "border-color".

```
.border, #border, table{ border:4px solid rgb(65, 50, 36) }
```

If only the border color should be changed use the property border-color.

```
.border{ border-color:rgb(65, 50, 36) }
```

If you want to add a box shadow in that color use:

Here you see how a box with a 4 pixel rgb(65, 50, 36) colored shadow looks like.

```
.boxshadow{ -moz-box-shadow:4px 4px 4px  
4px rgb(65, 50, 36); -webkit-box-  
shadow:4px 4px 4px 4px rgb(65, 50, 36);  
box-shadow:4px 4px 4px 4px rgb(65, 50, 36)  
}
```

Background

The CSS property to change the background color of an element to CIELCh 22, 12.326, 68.768 is called "background". The background property can be set on classes, ids or directly on the HTML element.

```
.background, #background, body{  
background: rgb(65, 50, 36) }
```

If only the background color should be changed can be used:

```
.background{ background-color: rgb(65, 50,  
36) }
```

This example shows the color as background, it is applied via the CSS property "background".

To optimize and compress your CSS code, you can use our [online CSS compressor and optimizer](#) based on csstidy. If you want to create a linear or radial gradient as background or border, check our [CSS Gradient Generator](#).

Hey! You found this booklet interesting? Support Converting Colors with the new Membership Option!

The pro membership hides all ads, plus gives you double the colors in the color bucket, and more awesome pro features!

[Learn more, Memberships starting at \\$2.50/m!](#)

**Follow me
on Twitter!**

@ConvertingColor