

Converting Colors

CIELCh(22, 18.894, 25.657)

Have a look what the booklet for
CIELCh(22, 18.894, 25.657) contains.

CIELCh(22, 18.894, 25.657)	3
<i>Conversions</i>	4
<i>Details</i>	6
<i>Harmonies</i>	11
<i>Previews</i>	20
<i>Color Blindness Simulation</i>	23
<i>CSS Examples</i>	26

Color

CIELCh(22, 18.894, 25.657)

Conversions

Conversions Part 1

Format	Color
Hex	4F2A29
RGB	79, 42, 41
RGB Percent	31%, 16%, 16%
CMY	0.6889, 0.8341, 0.8381
CMYK	0.00, 0.47, 0.48, 0.69
HSL	2°, 32%, 24%
HSV	2°, 48%, 31%
XYZ	4.4957, 3.5154, 2.5654
YIQ	52.9490, 22.3730, 7.5330

Conversions

Conversions Part 2

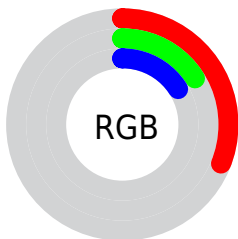
Format	Color
R_{YB}	79, 42, 41
Decimal	5188137
CIE Lab	22.00, 17.03, 8.18
CIE LCh	22, 18.894, 25.657
Yxy	3.5154, 0.4251, 0.3324
Android (android.graphics.Color)	4283378217 (0xFF4F2A29)
YUV	52.9490, -5.8909, 22.8467
Hunter-Lab	18.7494, 9.9889, 5.0121

Details

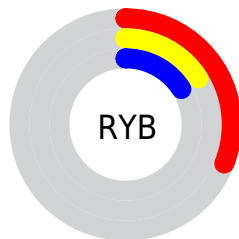
The CIELCh color **22, 18.894, 25.657** is a dark color, and the websafe version is hex **663333**. A complement of this color would be **31, 13.757, 200.160**, and the grayscale version is **22, 0.004, 296.813**.

A 20% lighter version of the original color is **42, 18.945, 25.604**, and **3, 15.353, 19.405** is the 20% darker color. If you saturate the color by 10%, you get **20, 23.492, 27.283**, and if you desaturate by 10%, it is **24, 14.479, 24.390**.

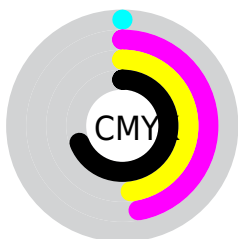
Distribution



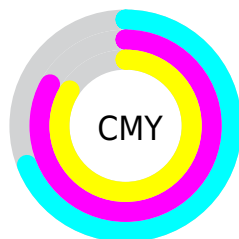
- Red (31%)
- Green (16%)
- Blue (16%)



- Red (31%)
- Yellow (16%)
- Blue (16%)



- Cyan (0%)
- Magenta (47%)
- Yellow (48%)
- Black (69%)



- Cyan (69%)
- Magenta (83%)
- Yellow (84%)

Brightness & Saturation Gradients

These gradients show how the CIELCh color 22, 18.894, 25.657 changes by changing the brightness by 10 percent. The first figure shows a shift by +10% for each color and the second figure -10%.

Similar to the brightness gradients but the following saturation gradients show a change of the CIELCh color 22, 18.894, 25.657 by changing the saturation by 10% instead.

■ 22, 18.894, 25.657

■ 22, 18.894, 25.657

■ 100, 18.894,
25.657

■ 12, 18.894, 25.657

■ 42, 18.894, 25.657

■ 2, 18.894, 25.657

■ 52, 18.894, 25.657

■ 0, 18.894, 25.657

■ 62, 18.894, 25.657

■ 72, 18.894, 25.657

■ 82, 18.894, 25.657

■ 92, 18.894, 25.657

■ 22, 18.894, 25.657

■ 22, 18.894, 25.657

■ 20, 23.492, 27.283

■ 24, 14.479, 24.390

■ 18, 28.193, 29.326

■ 27, 10.301, 23.398

■ 16, 32.778, 31.550

■ 29, 6.383, 22.617

■ 15, 36.384, 32.408

■ 32, 2.728, 21.962

■ 14, 39.392, 32.910

■ 34, 0.674, 202.026

■ 14, 40.022, 32.966

■ 37, 3.840, 201.313

■ 40, 6.792, 200.995

■ 42, 9.552, 200.758

■ 45, 12.139,
200.573

Harmonies

Complementary

The Complementary color scheme is a pair of colors which are on the opposite of each other on the color wheel.



22, 18.894, 25.657



31, 13.757, 200.160

Rectangle

The Rectangle color scheme consists of four colors that form a rectangle on the color wheel.



22, 18.894, 25.657



22, 18.894, 75.657



22, 18.894, 205.657



22, 18.894, 255.657

Sweetspot

The Sweet Spot groups the original color and five complimentary colors.



22, 18.893, 25.661



39, 6.049, 22.381



23, 28.724, 327.217



18, 4.141, 22.461



73, 0.009, 296.813



21, 0.004, 296.813

Same Dimension

The Same Dimension uses a secret algorithm to generate beautiful new colors.



22, 18.893, 25.661



26, 29.091, 27.664



27, 15.996, 71.664



15, 1.966, 22.014



20, 51.198, 36.985



49, 97.042, 40.210

Inverse Universe

The Inverse Universe completely reimagines the original color for something new.



31, 13.757, 200.160



39, 19.288, 199.995



24, 14.307, 264.993



16, 1.870, 201.418



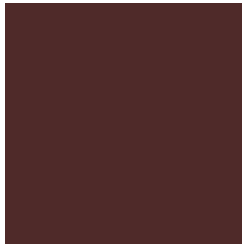
39, 25.122, 200.416



82, 44.946, 200.708

Previews

White Background



This preview shows how the CIELCh color 22, 18.894, 25.657 looks on a white background.

Color Contrast Check

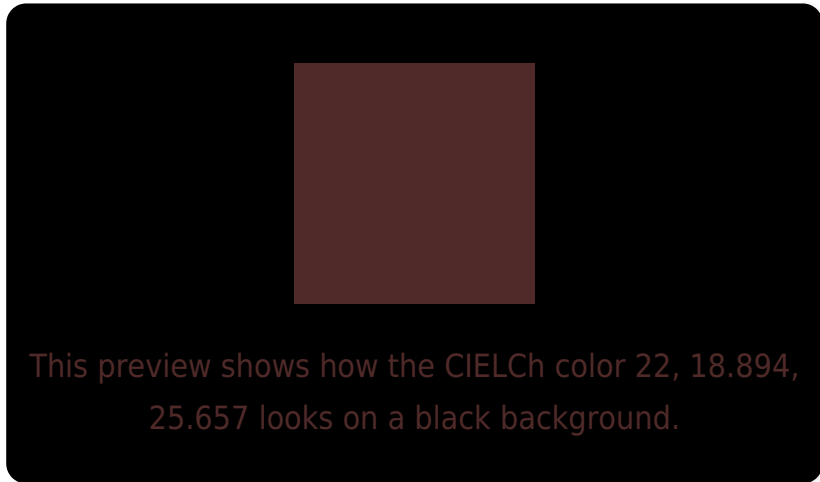
Large Text (above 18pt) WCAG AA ✓ Pass

Any Text WCAG AA ✓ Pass

Large Text (above 18pt) WCAG AAA ✓ Pass

Any Text WCAG AAA ✓ Pass

Black Background



Color Contrast Check

Large Text (above 18pt) WCAG AA × Fail

Any Text WCAG AA × Fail

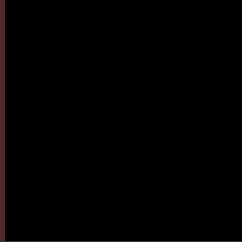
Large Text (above 18pt) WCAG AAA × Fail

Any Text WCAG AAA × Fail

If you want to check with other color combinations, try the [Color Contrast Checker](#).

CIELCh 22, 18.894, 25.657

Background



This preview shows how black text looks on a background with the CIELCh color 22, 18.894, 25.657.

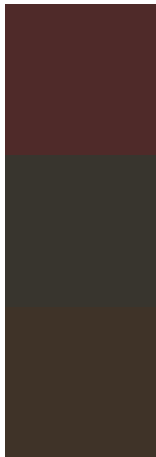


This preview shows how white text looks on a background with the CIELCh color 22, 18.894, 25.657.

Color Blindness Simulation

Color vision deficiency is a very complex topic, and I could not describe the different causes any better than Wikipedia does, so if you want to learn more, you should check out their [article about color blindness](#).

Dichromacy



Original Color

22, 18.894, 25.657

Protanopia

22, 4.890, 91.808

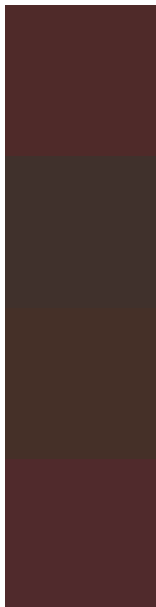
Deuteranopia

22, 9.629, 69.184



Tritanopia
22, 18.923, 17.968

Trichromacy



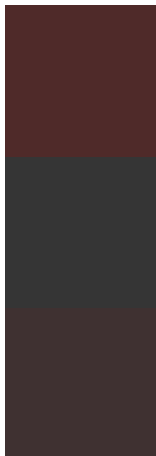
Original Color
22, 18.894, 25.657

Protanomaly
22, 8.255, 44.431

Deuteranomaly
22, 12.179, 46.940

Tritanomaly
22, 19.006, 19.942

Monochromacy



Original Color
22, 18.894, 25.657

Achromatopsia
22, 0.004, 296.813

Achromatomaly
22, 6.771, 20.773

CSS Examples

Text

The CSS property to change the color of the text to CIELCh 22, 18.894, 25.657 is called "color". The color property can be set on classes, ids or directly on the HTML element.

This example shows how text in the color `rgb(79, 42, 41)` looks like.

```
.text, #text, p{  
    color:rgb(79, 42, 41)  
}
```

If you want to add a text shadow in that color use the text-shadow property, you can generate a text shadow directly with our [CSS Text Shadow Generator](#).

Here you see how black text with a 4 pixel rgb(79, 42, 41) colored shadow looks like.

```
.shadow{ text-shadow: 4px 4px 2px rgb(79, 42, 41) }
```

Border

The CSS property to change the border of an element to CIELCh 22, 18.894, 25.657 is called "border". The border property can be set on classes, ids or directly on the HTML element.

This example shows the color as border, it can be applied via the CSS property "border" or "border-color".

```
.border, #border, table{ border:4px solid rgb(79, 42, 41) }
```

If only the border color should be changed use the property `border-color`.

```
.border{ border-color:rgb(79, 42, 41) }
```

If you want to add a box shadow in that color use:

Here you see how a box with a 4 pixel `rgb(79, 42, 41)` colored shadow looks like.

```
.boxshadow{ -moz-box-shadow:4px 4px 4px  
4px rgb(79, 42, 41); -webkit-box-  
shadow:4px 4px 4px 4px rgb(79, 42, 41);  
box-shadow:4px 4px 4px 4px rgb(79, 42, 41)  
}
```

Background

The CSS property to change the background color of an element to CIELCh 22, 18.894, 25.657 is called "background". The background property can be set on classes, ids or directly on the HTML element.

```
.background, #background, body{  
background: rgb(79, 42, 41) }
```

If only the background color should be changed can be used:

```
.background{ background-color: rgb(79, 42,  
41) }
```

This example shows the color as background, it is applied via the CSS property "background".

To optimize and compress your CSS code, you can use our [online CSS compressor and optimizer](#) based on csstidy. If you want to create a linear or radial gradient as background or border, check our [CSS Gradient Generator](#).

Hey! You found this booklet interesting? Support Converting Colors with the new Membership Option!

The pro membership hides all ads, plus gives you double the colors in the color bucket, and more awesome pro features!

[Learn more, Memberships starting at \\$2.50/m!](#)

**Follow me
on Twitter!**

@ConvertingColor