

Converting Colors

CIELCh(22, 21.764, 17.627)

Have a look what the booklet for
CIELCh(22, 21.764, 17.627) contains.

CIELCh(22, 21.436, 17.734)	3
<i>Conversions</i>	4
<i>Details</i>	6
<i>Harmonies</i>	11
<i>Previews</i>	20
<i>Color Blindness Simulation</i>	23
<i>CSS Examples</i>	26

Color

CIELCh(22, 21.436, 17.734)

Conversions

Conversions Part 1

Format	Color
Hex	53282C
RGB	83, 40, 44
RGB Percent	33%, 16%, 17%
CMY	0.6753, 0.8438, 0.8281
CMYK	0.00, 0.52, 0.47, 0.68
HSL	354°, 35%, 24%
HSV	354°, 52%, 32%
XYZ	4.7530, 3.5154, 2.7936
YIQ	53.3130, 24.3440, 10.3600

Conversions

Conversions Part 2

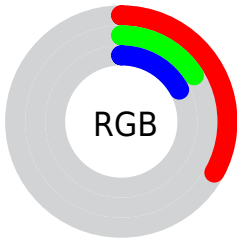
Format	Color
R_{YB}	83, 40, 44
Decimal	5449772
CIE Lab	22.00, 20.42, 6.53
CIE LCh	22, 21.436, 17.734
Yxy	3.5154, 0.4297, 0.3178
Android (android.graphics.Color)	4283639852 (0xFF53282C)
YUV	53.3130, -4.5913, 26.0355
Hunter-Lab	18.7494, 12.4387, 4.2907

Details

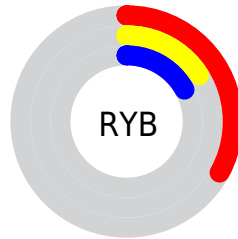
The CIELCh color **22, 21.436, 17.734** is a dark color, and the websafe version is hex **663333**. A complement of this color would be **32, 16.210, 188.054**, and the grayscale version is **22, 0.004, 296.813**.

A 20% lighter version of the original color is **42, 21.813, 17.950**, and **4, 17.706, 19.405** is the 20% darker color. If you saturate the color by 10%, you get **20, 25.964, 19.879**, and if you desaturate by 10%, it is **24, 16.940, 16.021**.

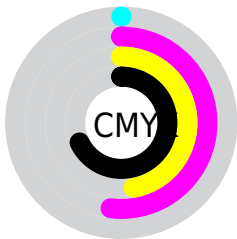
Distribution



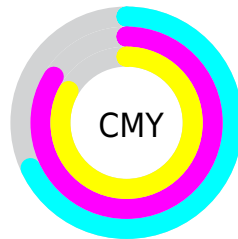
- Red (33%)
- Green (16%)
- Blue (17%)



- Red (33%)
- Yellow (16%)
- Blue (17%)



- Cyan (0%)
- Magenta (52%)
- Yellow (47%)
- Black (68%)



- Cyan (68%)
- Magenta (84%)
- Yellow (83%)

Brightness & Saturation Gradients

These gradients show how the CIELCh color 22, 21.436, 17.734 changes by changing the brightness by 10 percent. The first figure shows a shift by +10% for each color and the second figure -10%.

Similar to the brightness gradients but the following saturation gradients show a change of the CIELCh color 22, 21.436, 17.734 by changing the saturation by 10% instead.

■ 22, 21.436, 17.734

■ 22, 21.436, 17.734

■ 100, 21.436,
17.734

■ 12, 21.436, 17.734

■ 42, 21.436, 17.734

■ 2, 21.436, 17.734

■ 52, 21.436, 17.734

■ 0, 21.436, 17.734

■ 62, 21.436, 17.734

■ 72, 21.436, 17.734

■ 82, 21.436, 17.734

■ 92, 21.436, 17.734

■ 22, 21.436, 17.734

■ 22, 21.436, 17.734

■ 20, 25.964, 19.879

■ 24, 16.940, 16.021

■ 18, 30.407, 22.547

■ 27, 12.572, 14.636

■ 17, 34.635, 25.809

■ 29, 8.390, 13.504

■ 16, 38.190, 28.413

■ 32, 4.425, 12.549

■ 15, 40.717, 28.963

■ 35, 0.688, 11.426

■ 37, 2.826, 191.287

■ 40, 6.129, 190.672

■ 43, 9.238, 190.169

■ 46, 12.170,
189.734

Harmonies

Complementary

The Complementary color scheme is a pair of colors which are on the opposite of each other on the color wheel.



22, 21.436, 17.734



32, 16.210, 188.054

Rectangle

The Rectangle color scheme consists of four colors that form a rectangle on the color wheel.



22, 21.436, 17.734



22, 21.436, 67.734



22, 21.436, 197.734



22, 21.436, 247.734

Sweetspot

The Sweet Spot groups the original color and five complimentary colors.



22, 21.435, 17.737



40, 7.460, 12.975



23, 31.736, 323.906



19, 4.994, 13.076



74, 0.009, 296.813



22, 0.004, 296.813

Same Dimension

The Same Dimension uses a secret algorithm to generate beautiful new colors.



22, 21.435, 17.737



26, 32.244, 20.419



26, 17.723, 59.280



15, 2.032, 12.262



20, 49.601, 32.508



49, 93.411, 36.811

Inverse Universe

The Inverse Universe completely reimagines the original color for something new.



22, 21.435, 17.737



26, 32.244, 20.419



27, 14.098, 251.810



15, 2.032, 12.262



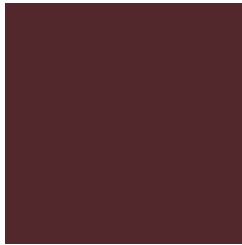
20, 49.601, 32.508



49, 93.411, 36.811

Previews

White Background



This preview shows how the CIELCh color 22, 21.436, 17.734 looks on a white background.

Color Contrast Check

Large Text (above 18pt) WCAG AA ✓ Pass

Any Text WCAG AA ✓ Pass

Large Text (above 18pt) WCAG AAA ✓ Pass

Any Text WCAG AAA ✓ Pass

Black Background



This preview shows how the CIE LCh color 22, 21.436, 17.734 looks on a black background.

Color Contrast Check

Large Text (above 18pt) WCAG AA × Fail

Any Text WCAG AA × Fail

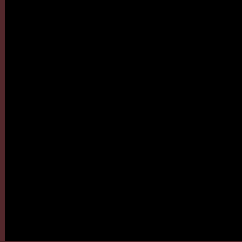
Large Text (above 18pt) WCAG AAA × Fail

Any Text WCAG AAA × Fail

If you want to check with other color combinations, try the [Color Contrast Checker](#).

CIELCh 22, 21.436, 17.734

Background



This preview shows how black text looks on a background with the CIELCh color 22, 21.436, 17.734.



This preview shows how white text looks on a background with the CIELCh color 22, 21.436, 17.734.

Color Blindness Simulation

Color vision deficiency is a very complex topic, and I could not describe the different causes any better than Wikipedia does, so if you want to learn more, you should check out their [article about color blindness](#).

Dichromacy



Original Color

22, 21.436, 17.734

Protanopia

22, 1.625, 74.581

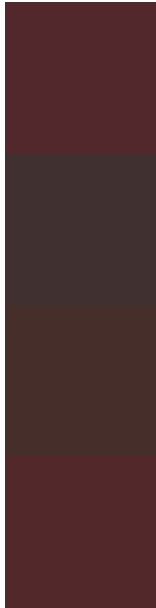
Deuteranopia

22, 8.226, 66.593



Tritanopia
22, 21.525, 19.476

Trichromacy



Original Color
22, 21.436, 17.734

Protanomaly
22, 8.293, 21.120

Deuteranomaly
22, 11.999, 34.394

Tritanomaly
22, 21.525, 19.476

Monochromacy



Original Color
22, 21.436, 17.734

Achromatopsia
22, 0.004, 296.813

Achromatomaly
22, 7.799, 11.241

CSS Examples

Text

The CSS property to change the color of the text to CIELCh 22, 21.436, 17.734 is called "color". The color property can be set on classes, ids or directly on the HTML element.

This example shows how text in the color `rgb(83, 40, 44)` looks like.

```
.text, #text, p{  
    color:rgb(83, 40, 44)  
}
```

If you want to add a text shadow in that color use the text-shadow property, you can generate a text shadow directly with our [CSS Text Shadow Generator](#).

Here you see how black text with a 4 pixel rgb(83, 40, 44) colored shadow looks like.

```
.shadow{ text-shadow: 4px 4px 2px rgb(83, 40, 44) }
```

Border

The CSS property to change the border of an element to CIELCh 22, 21.436, 17.734 is called "border". The border property can be set on classes, ids or directly on the HTML element.

This example shows the color as border, it can be applied via the CSS property "border" or "border-color".

```
.border, #border, table{ border:4px solid rgb(83, 40, 44) }
```

If only the border color should be changed use the property border-color.

```
.border{ border-color:rgb(83, 40, 44) }
```

If you want to add a box shadow in that color use:

Here you see how a box with a 4 pixel rgb(83, 40, 44) colored shadow looks like.

```
.boxshadow{ -moz-box-shadow:4px 4px 4px  
4px rgb(83, 40, 44); -webkit-box-  
shadow:4px 4px 4px 4px rgb(83, 40, 44);  
box-shadow:4px 4px 4px 4px rgb(83, 40, 44)  
}
```

Background

The CSS property to change the background color of an element to CIELCh 22, 21.436, 17.734 is called "background". The background property can be set on classes, ids or directly on the HTML element.

```
.background, #background, body{  
background: rgb(83, 40, 44) }
```

If only the background color should be changed can be used:

```
.background{ background-color: rgb(83, 40,  
44) }
```

This example shows the color as background, it is applied via the CSS property "background".

To optimize and compress your CSS code, you can use our [online CSS compressor and optimizer](#) based on csstidy. If you want to create a linear or radial gradient as background or border, check our [CSS Gradient Generator](#).

Hey! You found this booklet interesting? Support Converting Colors with the new Membership Option!

The pro membership hides all ads, plus gives you double the colors in the color bucket, and more awesome pro features!

[Learn more, Memberships starting at \\$2.50/m!](#)

**Follow me
on Twitter!**

@ConvertingColor