

Converting Colors

CIELCh(22, 9.945, 5.048)

Have a look what the booklet for
CIELCh(22, 9.945, 5.048) contains.

CIELCh(22, 10.063, 2.363)	3
<i>Conversions</i>	4
<i>Details</i>	6
<i>Harmonies</i>	11
<i>Previews</i>	20
<i>Color Blindness Simulation</i>	23
<i>CSS Examples</i>	26

Color

CIELCh(22, 10.063, 2.363)

Conversions

Conversions Part 1

Format	Color
Hex	432F34
RGB	67, 47, 52
RGB Percent	26%, 18%, 20%
CMY	0.7359, 0.8144, 0.7948
CMYK	0.00, 0.30, 0.22, 0.74
HSL	345°, 17%, 22%
HSV	345°, 30%, 26%
XYZ	3.9952, 3.5154, 3.7554
YIQ	53.5500, 10.3150, 5.7950

Conversions

Conversions Part 2

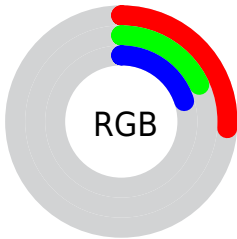
Format	Color
RYB	67, 47, 52
Decimal	4402996
CIELab	22.00, 10.05, 0.41
CIELCh	22, 10.063, 2.363
Yxy	3.5154, 0.3546, 0.3120
Android (android.graphics.Color)	4282593076 (0xFF432F34)
YUV	53.5500, -0.7641, 11.7957
Hunter-Lab	18.7494, 5.2235, 1.2491

Details

The CIELCh color **22, 10.063, 2.363** is a dark color, and the websafe version is hex **333333**. A complement of this color would be **27, 9.178, 177.033**, and the grayscale version is **23, 0.004, 296.813**.

A 20% lighter version of the original color is **42, 9.840, 3.005**, and **2, 9.773, 5.071** is the 20% darker color. If you saturate the color by 10%, you get **20, 13.646, 3.656**, and if you desaturate by 10%, it is **24, 6.558, 1.259**.

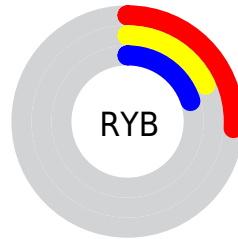
Distribution



Red (26%)

Green (18%)

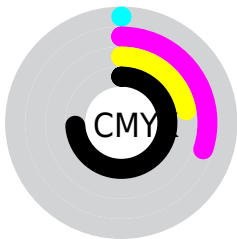
Blue (20%)



Red (26%)

Yellow (18%)

Blue (20%)

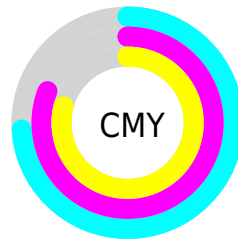


Cyan (0%)

Magenta (30%)

Yellow (22%)

Black (74%)



Cyan (74%)

Magenta (81%)

Yellow (79%)

Brightness & Saturation Gradients

These gradients show how the CIELCh color 22, 10.063, 2.363 changes by changing the brightness by 10 percent. The first figure shows a shift by +10% for each color and the second figure -10%.

Similar to the brightness gradients but the following saturation gradients show a change of the CIELCh color 22, 10.063, 2.363 by changing the saturation by 10% instead.

■ 22, 10.063, 2.363

■ 22, 10.063, 2.363

■ 100, 10.063, 2.363

■ 12, 10.063, 2.363

■ 42, 10.063, 2.363

■ 2, 10.063, 2.363

■ 52, 10.063, 2.363

■ 0, 10.063, 2.363

■ 62, 10.063, 2.363

■ 72, 10.063, 2.363

■ 82, 10.063, 2.363

■ 92, 10.063, 2.363

■ 22, 10.063, 2.363

■ 22, 10.063, 2.363

■ 20, 13.646, 3.656

■ 24, 6.558, 1.259

18, 17.252, 5.188

26, 3.169, 0.274

16, 20.795, 7.038

29, 0.085, 182.191

15, 24.166, 9.303

31, 3.199, 178.847

13, 27.244, 12.093

33, 6.173, 178.150

12, 30.017, 15.323

36, 9.014, 177.540

11, 32.936, 17.047

38, 11.730,
176.989

11, 33.019, 17.068

40, 14.330,
176.486

42, 16.825,
176.023

Harmonies

Complementary

The Complementary color scheme is a pair of colors which are on the opposite of each other on the color wheel.



22, 10.063, 2.363



27, 9.178, 177.033

Rectangle

The Rectangle color scheme consists of four colors that form a rectangle on the color wheel.



22, 10.063, 2.363



22, 10.063, 52.363



22, 10.063, 182.363



22, 10.063, 232.363

Sweetspot

The Sweet Spot groups the original color and five complimentary colors.



22, 10.062, 2.367



34, 3.615, 0.239



22, 14.954, 318.425



16, 2.476, 0.304



70, 0.009, 296.813



18, 0.003, 296.813

Same Dimension

The Same Dimension uses a secret algorithm to generate beautiful new colors.



22, 10.062, 2.367



27, 15.210, 3.342



23, 8.157, 44.454



12, 1.784, 0.155



18, 43.271, 21.570



47, 82.251, 26.275

Inverse Universe

The Inverse Universe completely reimagines the original color for something new.



22, 10.062, 2.367



27, 15.210, 3.342



25, 6.888, 227.246



12, 1.784, 0.155



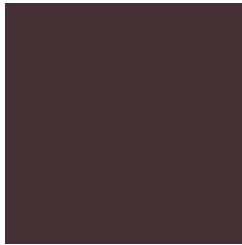
18, 43.271, 21.570



47, 82.251, 26.275

Previews

White Background



This preview shows how the CIE LCh color 22, 10.063, 2.363 looks on a white background.

Color Contrast Check

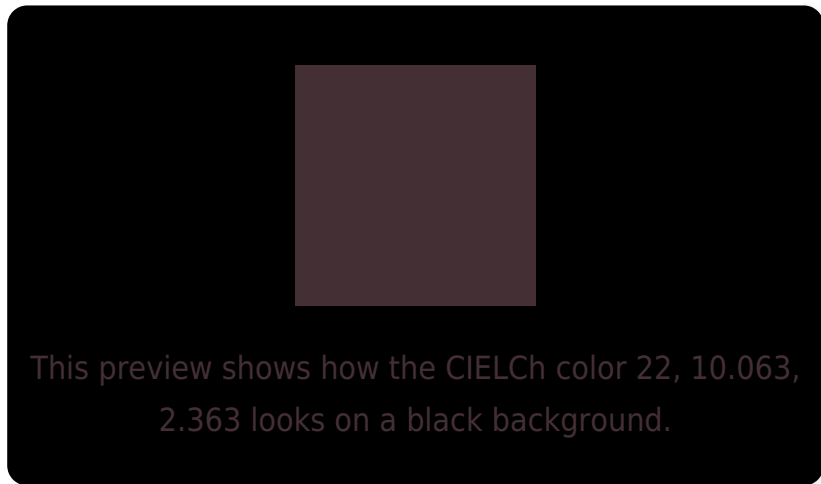
Large Text (above 18pt) WCAG AA ✓ Pass

Any Text WCAG AA ✓ Pass

Large Text (above 18pt) WCAG AAA ✓ Pass

Any Text WCAG AAA ✓ Pass

Black Background



Color Contrast Check

Large Text (above 18pt) WCAG AA × Fail

Any Text WCAG AA × Fail

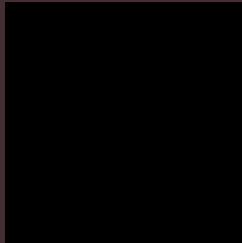
Large Text (above 18pt) WCAG AAA × Fail

Any Text WCAG AAA × Fail

If you want to check with other color combinations, try the [Color Contrast Checker](#).

CIELCh 22, 10.063, 2.363

Background



This preview shows how black text looks on a background with the CIELCh color 22, 10.063, 2.363.

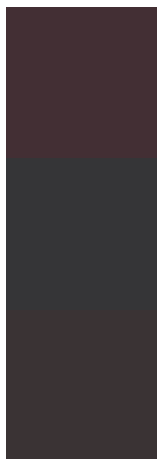


This preview shows how white text looks on a background with the CIELCh color 22, 10.063, 2.363.

Color Blindness Simulation

Color vision deficiency is a very complex topic, and I could not describe the different causes any better than Wikipedia does, so if you want to learn more, you should check out their [article about color blindness](#).

Dichromacy



Original Color

22, 10.063, 2.363

Protanopia

22, 1.344, 290.498

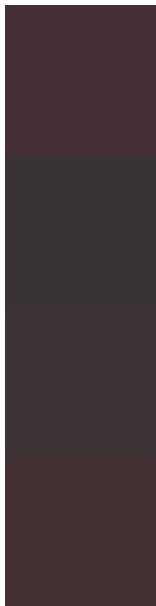
Deuteranopia

22, 3.361, 8.569



Tritanopia
22, 9.318, 9.098

Trichromacy



Original Color

22, 10.063, 2.363

Protanomaly

22, 3.834, 348.568

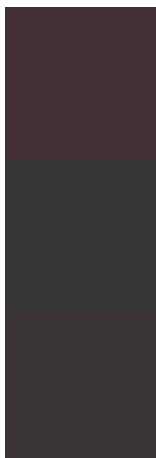
Deuteranomaly

22, 5.373, 6.129

Tritanomaly

22, 9.318, 9.098

Monochromacy



Original Color

22, 10.063, 2.363

Achromatopsia

23, 0.004, 296.813

Achromatomaly

22, 3.351, 8.554

CSS Examples

Text

The CSS property to change the color of the text to CIELCh 22, 10.063, 2.363 is called "color". The color property can be set on classes, ids or directly on the HTML element.

This example shows how text in the color `rgb(67, 47, 52)` looks like.

```
.text, #text, p{  
    color:rgb(67, 47, 52)  
}
```

If you want to add a text shadow in that color use the text-shadow property, you can generate a text shadow directly with our [CSS Text Shadow Generator](#).

Here you see how black text with a 4 pixel rgb(67, 47, 52) colored shadow looks like.

```
.shadow{ text-shadow: 4px 4px 2px rgb(67, 47, 52) }
```

Border

The CSS property to change the border of an element to CIELCh 22, 10.063, 2.363 is called "border". The border property can be set on classes, ids or directly on the HTML element.

This example shows the color as border, it can be applied via the CSS property "border" or "border-color".

```
.border, #border, table{ border:4px solid rgb(67, 47, 52) }
```

If only the border color should be changed use the property border-color.

```
.border{ border-color:rgb(67, 47, 52) }
```

If you want to add a box shadow in that color use:

Here you see how a box with a 4 pixel rgb(67, 47, 52) colored shadow looks like.

```
.boxshadow{ -moz-box-shadow:4px 4px 4px  
4px rgb(67, 47, 52); -webkit-box-  
shadow:4px 4px 4px 4px rgb(67, 47, 52);  
box-shadow:4px 4px 4px 4px rgb(67, 47, 52)  
}
```

Background

The CSS property to change the background color of an element to CIELCh 22, 10.063, 2.363 is called "background". The background property can be set on classes, ids or directly on the HTML element.

```
.background, #background, body{  
background: rgb(67, 47, 52) }
```

If only the background color should be changed can be used:

```
.background{ background-color: rgb(67, 47,  
52) }
```

This example shows the color as background, it is applied via the CSS property "background".

To optimize and compress your CSS code, you can use our [online CSS compressor and optimizer](#) based on csstidy. If you want to create a linear or radial gradient as background or border, check our [CSS Gradient Generator](#).

Hey! You found this booklet interesting? Support Converting Colors with the new Membership Option!

The pro membership hides all ads, plus gives you double the colors in the color bucket, and more awesome pro features!

[Learn more, Memberships starting at \\$2.50/m!](#)

**Follow me
on Twitter!**

@ConvertingColor