

Converting Colors

CIELCh(23, 10.877, 39.675)

Have a look what the booklet for
CIELCh(23, 10.877, 39.675) contains.

CIELCh(23, 11.116, 38.503)	3
<i>Conversions</i>	4
<i>Details</i>	6
<i>Harmonies</i>	11
<i>Previews</i>	20
<i>Color Blindness Simulation</i>	23
<i>CSS Examples</i>	26

Color

CIELCh(23, 11.116, 38.503)

Conversions

Conversions Part 1

Format	Color
Hex	47322D
RGB	71, 50, 45
RGB Percent	28%, 20%, 18%
CMY	0.7219, 0.8042, 0.8238
CMYK	0.00, 0.30, 0.37, 0.72
HSL	12°, 22%, 23%
HSV	12°, 37%, 28%
XYZ	4.2024, 3.8003, 2.9873
YIQ	55.7090, 14.1210, 2.8970

Conversions

Conversions Part 2

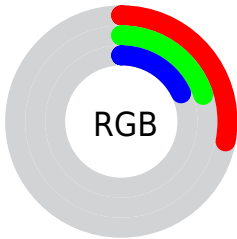
Format	Color
R_{YB}	71, 51, 45
Decimal	4665901
CIE Lab	23.00, 8.70, 6.92
CIE LCh	23, 11.116, 38.503
Yxy	3.8003, 0.3824, 0.3458
Android (android.graphics.Color)	4282855981 (0xFF47322D)
YUV	55.7090, -5.2795, 13.4102
Hunter-Lab	19.4944, 4.3637, 4.5606

Details

The CIELCh color **23, 11.116, 38.503** is a dark color, and the websafe version is hex **333333**. A complement of this color would be **26, 8.834, 220.048**, and the grayscale version is **23, 0.004, 296.813**.

A 20% lighter version of the original color is **43, 11.015, 36.335**, and **3, 10.221, 28.483** is the 20% darker color. If you saturate the color by 10%, you get **21, 14.680, 38.781**, and if you desaturate by 10%, it is **25, 7.787, 38.378**.

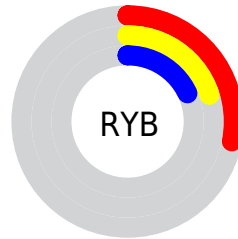
Distribution



Red (28%)

Green (20%)

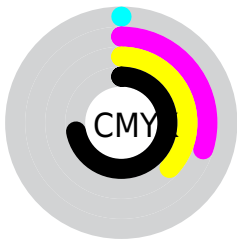
Blue (18%)



Red (28%)

Yellow (20%)

Blue (18%)

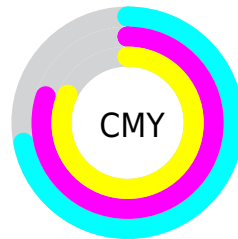


Cyan (0%)

Magenta (30%)

Yellow (37%)

Black (72%)



Cyan (72%)

Magenta (80%)

Yellow (82%)

Brightness & Saturation Gradients

These gradients show how the CIELCh color 23, 11.116, 38.503 changes by changing the brightness by 10 percent. The first figure shows a shift by +10% for each color and the second figure -10%.

Similar to the brightness gradients but the following saturation gradients show a change of the CIELCh color 23, 11.116, 38.503 by changing the saturation by 10% instead.

■ 23, 11.116, 38.503

■ 23, 11.116, 38.503

■ 100, 11.116,
38.503

■ 13, 11.116, 38.503

■ 43, 11.116, 38.503

■ 3, 11.116, 38.503

■ 53, 11.116, 38.503

■ 0, 11.116, 38.503

■ 63, 11.116, 38.503

■ 73, 11.116, 38.503

■ 83, 11.116, 38.503

■ 93, 11.116, 38.503

■ 23, 11.116, 38.503

■ 23, 11.116, 38.503

21, 14.680, 38.781

25, 7.787, 38.378

19, 18.477, 39.223

27, 4.688, 38.353

18, 22.482, 39.857

29, 1.805, 38.354

16, 26.496, 40.324

31, 0.879, 218.956

15, 29.786, 39.325

33, 3.381, 218.953

14, 32.640, 38.381

35, 5.722, 219.178

13, 33.549, 38.265

37, 7.917, 219.451

39, 9.983, 219.750

41, 11.935,
220.065

Harmonies

Complementary

The Complementary color scheme is a pair of colors which are on the opposite of each other on the color wheel.



23, 11.116, 38.503



26, 8.834, 220.048

Rectangle

The Rectangle color scheme consists of four colors that form a rectangle on the color wheel.



23, 11.116, 38.503



23, 11.116, 88.503



23, 11.116, 218.503



23, 11.116, 268.503

Sweetspot

The Sweet Spot groups the original color and five complimentary colors.



23, 11.115, 38.509



36, 3.763, 38.363



22, 18.070, 332.019



17, 2.496, 38.362



71, 0.009, 296.813



19, 0.004, 296.813

Same Dimension

The Same Dimension uses a secret algorithm to generate beautiful new colors.



23, 11.115, 38.509



29, 17.093, 38.749



27, 12.225, 88.254



13, 1.531, 38.364



21, 46.502, 41.754



50, 91.547, 42.963

Inverse Universe

The Inverse Universe completely reimagines the original color for something new.



26, 8.834, 220.048



34, 12.698, 220.739



22, 12.222, 277.540



13, 1.461, 218.891



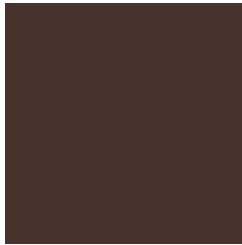
31, 21.874, 231.496



69, 40.138, 234.457

Previews

White Background



This preview shows how the CIE LCh color 23, 11.116, 38.503 looks on a white background.

Color Contrast Check

Large Text (above 18pt) WCAG AA ✓ Pass

Any Text WCAG AA ✓ Pass

Large Text (above 18pt) WCAG AAA ✓ Pass

Any Text WCAG AAA ✓ Pass

Black Background



This preview shows how the CIELCh color 23, 11.116, 38.503 looks on a black background.

Color Contrast Check

Large Text (above 18pt) WCAG AA × Fail

Any Text WCAG AA × Fail

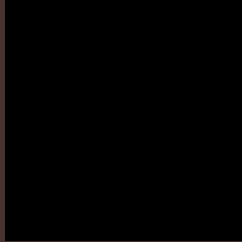
Large Text (above 18pt) WCAG AAA × Fail

Any Text WCAG AAA × Fail

If you want to check with other color combinations, try the [Color Contrast Checker](#).

CIELCh 23, 11.116, 38.503

Background



This preview shows how black text looks on a background with the CIELCh color 23, 11.116, 38.503.

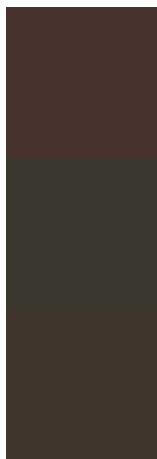


This preview shows how white text looks on a background with the CIELCh color 23, 11.116, 38.503.

Color Blindness Simulation

Color vision deficiency is a very complex topic, and I could not describe the different causes any better than Wikipedia does, so if you want to learn more, you should check out their [article about color blindness](#).

Dichromacy



Original Color

23, 11.116, 38.503

Protanopia

23, 5.500, 93.687

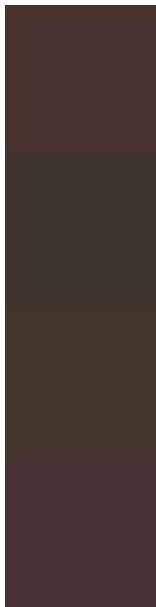
Deuteranopia

23, 8.167, 66.674



Tritanopia
23, 11.273, 8.353

Trichromacy



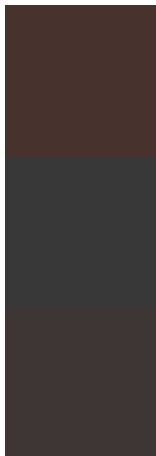
Original Color
23, 11.116, 38.503

Protanomaly
23, 6.809, 62.832

Deuteranomaly
23, 9.291, 55.046

Tritanomaly
23, 11.207, 18.397

Monochromacy



Original Color
23, 11.116, 38.503

Achromatopsia
24, 0.004, 296.813

Achromatomaly
23, 3.573, 41.663

CSS Examples

Text

The CSS property to change the color of the text to CIELCh 23, 11.116, 38.503 is called "color". The color property can be set on classes, ids or directly on the HTML element.

This example shows how text in the color `rgb(71, 50, 45)` looks like.

```
.text, #text, p{  
    color:rgb(71, 50, 45)  
}
```

If you want to add a text shadow in that color use the text-shadow property, you can generate a text shadow directly with our [CSS Text Shadow Generator](#).

Here you see how black text with a 4 pixel rgb(71, 50, 45) colored shadow looks like.

```
.shadow{ text-shadow: 4px 4px 2px rgb(71, 50, 45) }
```

Border

The CSS property to change the border of an element to CIELCh 23, 11.116, 38.503 is called "border". The border property can be set on classes, ids or directly on the HTML element.

This example shows the color as border, it can be applied via the CSS property "border" or "border-color".

```
.border, #border, table{ border:4px solid rgb(71, 50, 45) }
```

If only the border color should be changed use the property `border-color`.

```
.border{ border-color:rgb(71, 50, 45) }
```

If you want to add a box shadow in that color use:

Here you see how a box with a 4 pixel `rgb(71, 50, 45)` colored shadow looks like.

```
.boxshadow{ -moz-box-shadow:4px 4px 4px  
4px rgb(71, 50, 45); -webkit-box-  
shadow:4px 4px 4px 4px rgb(71, 50, 45);  
box-shadow:4px 4px 4px 4px rgb(71, 50, 45)  
}
```

Background

The CSS property to change the background color of an element to CIELCh 23, 11.116, 38.503 is called "background". The background property can be set on classes, ids or directly on the HTML element.

```
.background, #background, body{  
background: rgb(71, 50, 45) }
```

If only the background color should be changed can be used:

```
.background{ background-color: rgb(71, 50,  
45) }
```

This example shows the color as background, it is applied via the CSS property "background".

To optimize and compress your CSS code, you can use our [online CSS compressor and optimizer](#) based on csstidy. If you want to create a linear or radial gradient as background or border, check our [CSS Gradient Generator](#).

Hey! You found this booklet interesting? Support Converting Colors with the new Membership Option!

The pro membership hides all ads, plus gives you double the colors in the color bucket, and more awesome pro features!

[Learn more, Memberships starting at \\$2.50/m!](#)

**Follow me
on Twitter!**

@ConvertingColor