

Converting Colors

CIELCh(23, 15.015, 24.972)

Have a look what the booklet for
CIELCh(23, 15.015, 24.972) contains.

CIELCh(23, 15.012, 25.047)	3
<i>Conversions</i>	4
<i>Details</i>	6
<i>Harmonies</i>	11
<i>Previews</i>	20
<i>Color Blindness Simulation</i>	23
<i>CSS Examples</i>	26

Color

CIELCh(23, 15.012, 25.047)

Conversions

Conversions Part 1

Format	Color
Hex	4D2F2E
RGB	77, 47, 46
RGB Percent	30%, 18%, 18%
CMY	0.6983, 0.8159, 0.8198
CMYK	0.00, 0.39, 0.40, 0.70
HSL	2°, 25%, 24%
HSV	2°, 40%, 30%
XYZ	4.5616, 3.8003, 3.0720
YIQ	55.8560, 18.2010, 6.0490

Conversions

Conversions Part 2

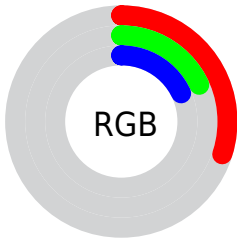
Format	Color
RYB	77, 47, 46
Decimal	5058350
CIELab	23.00, 13.60, 6.36
CIElCh	23, 15.012, 25.047
Yxy	3.8003, 0.3990, 0.3324
Android (android.graphics.Color)	4283248430 (0xFF4D2F2E)
YUV	55.8560, -4.8590, 18.5433
Hunter-Lab	19.4944, 7.6532, 4.3030

Details

The CIELCh color **23, 15.012, 25.047** is a dark color, and the websafe version is hex **663333**. A complement of this color would be **30, 11.583, 200.917**, and the grayscale version is **23, 0.004, 296.813**.

A 20% lighter version of the original color is **43, 15.006, 23.662**, and **3, 14.612, 19.405** is the 20% darker color. If you saturate the color by 10%, you get **21, 19.342, 26.353**, and if you desaturate by 10%, it is **25, 10.904, 24.036**.

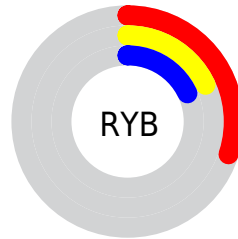
Distribution



Red (30%)

Green (18%)

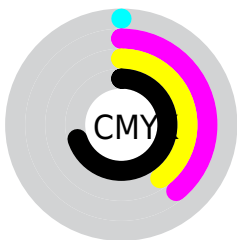
Blue (18%)



Red (30%)

Yellow (18%)

Blue (18%)

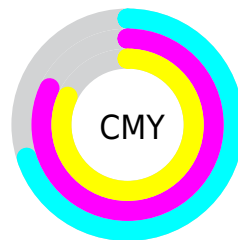


Cyan (0%)

Magenta (39%)

Yellow (40%)

Black (70%)



Cyan (70%)

Magenta (82%)

Yellow (82%)

Brightness & Saturation Gradients

These gradients show how the CIELCh color 23, 15.012, 25.047 changes by changing the brightness by 10 percent. The first figure shows a shift by +10% for each color and the second figure -10%.

Similar to the brightness gradients but the following saturation gradients show a change of the CIELCh color 23, 15.012, 25.047 by changing the saturation by 10% instead.

■ 23, 15.012, 25.047

■ 23, 15.012, 25.047

■ 100, 15.012,
25.047

■ 13, 15.012, 25.047

■ 43, 15.012, 25.047

■ 3, 15.012, 25.047

■ 53, 15.012, 25.047

■ 0, 15.012, 25.047

■ 63, 15.012, 25.047

■ 73, 15.012, 25.047

■ 83, 15.012, 25.047

■ 93, 15.012, 25.047

■ 23, 15.012, 25.047

■ 23, 15.012, 25.047

■ 21, 19.342, 26.353

■ 25, 10.904, 24.036

■ 19, 23.844, 28.011

■ 28, 7.047, 23.240

■ 17, 28.431, 30.087

■ 30, 3.445, 22.592

■ 16, 32.702, 31.833

■ 33, 0.092, 19.167

■ 14, 35.953, 32.315

■ 35, 3.029, 201.929

■ 13, 38.828, 32.636

■ 38, 5.938, 201.598

■ 40, 8.656, 201.360

■ 43, 11.204,
201.179

■ 45, 13.599,
201.038

Harmonies

Complementary

The Complementary color scheme is a pair of colors which are on the opposite of each other on the color wheel.



23, 15.012, 25.047



30, 11.583, 200.917

Rectangle

The Rectangle color scheme consists of four colors that form a rectangle on the color wheel.



23, 15.012, 25.047



23, 15.012, 75.047



23, 15.012, 205.047



23, 15.012, 255.047

Sweetspot

The Sweet Spot groups the original color and five complimentary colors.



23, 15.011, 25.051



38, 5.011, 22.725



24, 23.733, 326.858



19, 3.358, 22.759



73, 0.009, 296.813



21, 0.004, 296.813

Same Dimension

The Same Dimension uses a secret algorithm to generate beautiful new colors.



23, 15.011, 25.051



28, 22.796, 26.273



27, 12.897, 72.592



14, 1.850, 22.491



20, 50.016, 36.850



48, 96.161, 40.259

Inverse Universe

The Inverse Universe completely reimagines the original color for something new.



30, 11.583, 200.917



38, 16.385, 200.752



25, 11.766, 263.295



15, 1.761, 201.945



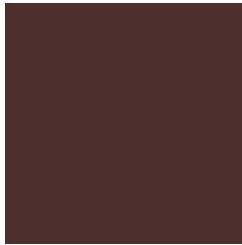
38, 24.516, 201.305



81, 44.238, 201.677

Previews

White Background



This preview shows how the CIE LCh color 23, 15.012, 25.047 looks on a white background.

Color Contrast Check

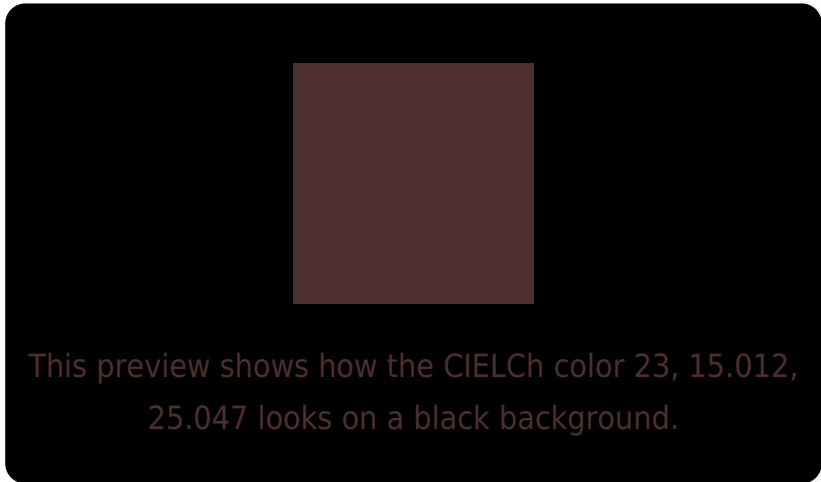
Large Text (above 18pt) WCAG AA ✓ Pass

Any Text WCAG AA ✓ Pass

Large Text (above 18pt) WCAG AAA ✓ Pass

Any Text WCAG AAA ✓ Pass

Black Background



Color Contrast Check

Large Text (above 18pt) WCAG AA × Fail

Any Text WCAG AA × Fail

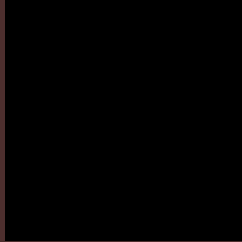
Large Text (above 18pt) WCAG AAA × Fail

Any Text WCAG AAA × Fail

If you want to check with other color combinations, try the [Color Contrast Checker](#).

CIELCh 23, 15.012, 25.047

Background



This preview shows how black text looks on a background with the CIELCh color 23, 15.012, 25.047.

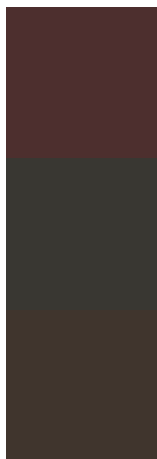


This preview shows how white text looks on a background with the CIELCh color 23, 15.012, 25.047.

Color Blindness Simulation

Color vision deficiency is a very complex topic, and I could not describe the different causes any better than Wikipedia does, so if you want to learn more, you should check out their [article about color blindness](#).

Dichromacy



Original Color

23, 15.012, 25.047

Protanopia

23, 3.448, 93.453

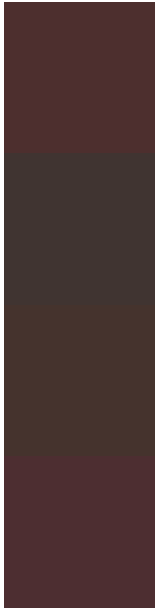
Deuteranopia

23, 7.664, 63.625



Tritanopia
23, 15.238, 12.969

Trichromacy



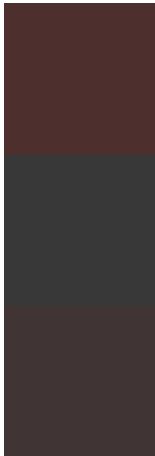
Original Color
23, 15.012, 25.047

Protanomaly
23, 6.173, 39.164

Deuteranomaly
23, 9.924, 44.366

Tritanomaly
23, 15.244, 15.434

Monochromacy



Original Color
23, 15.012, 25.047

Achromatopsia
24, 0.004, 296.813

Achromatomaly
23, 5.292, 27.529

CSS Examples

Text

The CSS property to change the color of the text to CIELCh 23, 15.012, 25.047 is called "color". The color property can be set on classes, ids or directly on the HTML element.

This example shows how text in the color `rgb(77, 47, 46)` looks like.

```
.text, #text, p{  
    color:rgb(77, 47, 46)  
}
```

If you want to add a text shadow in that color use the text-shadow property, you can generate a text shadow directly with our [CSS Text Shadow Generator](#).

Here you see how black text with a 4 pixel rgb(77, 47, 46) colored shadow looks like.

```
.shadow{ text-shadow: 4px 4px 2px rgb(77, 47, 46) }
```

Border

The CSS property to change the border of an element to CIELCh 23, 15.012, 25.047 is called "border". The border property can be set on classes, ids or directly on the HTML element.

This example shows the color as border, it can be applied via the CSS property "border" or "border-color".

```
.border, #border, table{ border:4px solid rgb(77, 47, 46) }
```

If only the border color should be changed use the property `border-color`.

```
.border{ border-color:rgb(77, 47, 46) }
```

If you want to add a box shadow in that color use:

Here you see how a box with a 4 pixel `rgb(77, 47, 46)` colored shadow looks like.

```
.boxshadow{ -moz-box-shadow:4px 4px 4px  
4px rgb(77, 47, 46); -webkit-box-  
shadow:4px 4px 4px 4px rgb(77, 47, 46);  
box-shadow:4px 4px 4px 4px rgb(77, 47, 46)  
}
```

Background

The CSS property to change the background color of an element to CIELCh 23, 15.012, 25.047 is called "background". The background property can be set on classes, ids or directly on the HTML element.

```
.background, #background, body{  
background: rgb(77, 47, 46) }
```

If only the background color should be changed can be used:

```
.background{ background-color: rgb(77, 47,  
46) }
```

This example shows the color as background, it is applied via the CSS property "background".

To optimize and compress your CSS code, you can use our [online CSS compressor and optimizer](#) based on csstidy. If you want to create a linear or radial gradient as background or border, check our [CSS Gradient Generator](#).

Hey! You found this booklet interesting? Support Converting Colors with the new Membership Option!

The pro membership hides all ads, plus gives you double the colors in the color bucket, and more awesome pro features!

[Learn more, Memberships starting at \\$2.50/m!](#)

**Follow me
on Twitter!**

@ConvertingColor