

Converting Colors

CIELCh(23, 15.347, 22.731)

Have a look what the booklet for
CIELCh(23, 15.347, 22.731) contains.

CIELCh(23, 14.888, 22.582)	3
<i>Conversions</i>	4
<i>Details</i>	6
<i>Harmonies</i>	11
<i>Previews</i>	20
<i>Color Blindness Simulation</i>	23
<i>CSS Examples</i>	26

Color

CIELCh(23, 14.888, 22.582)

Conversions

Conversions Part 1

Format	Color
Hex	4D2F2F
RGB	77, 47, 47
RGB Percent	30%, 18%, 18%
CMY	0.6985, 0.8161, 0.8161
CMYK	0.00, 0.39, 0.39, 0.70
HSL	360°, 24%, 24%
HSV	360°, 39%, 30%
XYZ	4.5727, 3.8003, 3.1696
YIQ	55.9700, 17.8800, 6.3600

Conversions

Conversions Part 2

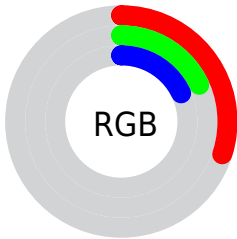
Format	Color
RYB	77, 47, 47
Decimal	5058351
CIELab	23.00, 13.75, 5.72
CIElCh	23, 14.888, 22.582
Yxy	3.8003, 0.3962, 0.3292
Android (android.graphics.Color)	4283248431 (0xFF4D2F2F)
YUV	55.9700, -4.4222, 18.4433
Hunter-Lab	19.4944, 7.7542, 4.0060

Details

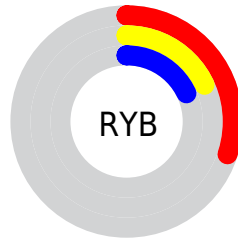
The CIELCh color **23, 14.888, 22.582** is a dark color, and the websafe version is hex **663333**. A complement of this color would be **30, 11.651, 197.706**, and the grayscale version is **23, 0.004, 296.813**.

A 20% lighter version of the original color is **43, 14.930, 21.412**, and **3, 14.612, 19.405** is the 20% darker color. If you saturate the color by 10%, you get **21, 19.278, 24.016**, and if you desaturate by 10%, it is **25, 10.709, 21.462**.

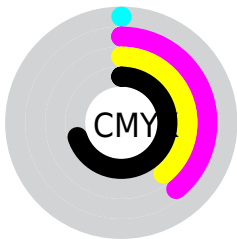
Distribution



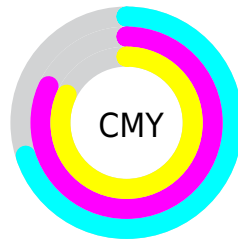
- Red (30%)
- Green (18%)
- Blue (18%)



- Red (30%)
- Yellow (18%)
- Blue (18%)



- Cyan (0%)
- Magenta (39%)
- Yellow (39%)
- Black (70%)



- Cyan (70%)
- Magenta (82%)
- Yellow (82%)

Brightness & Saturation Gradients

These gradients show how the CIELCh color 23, 14.888, 22.582 changes by changing the brightness by 10 percent. The first figure shows a shift by +10% for each color and the second figure -10%.

Similar to the brightness gradients but the following saturation gradients show a change of the CIELCh color 23, 14.888, 22.582 by changing the saturation by 10% instead.

■ 23, 14.888, 22.582

■ 23, 14.888, 22.582

■ 100, 14.888,
22.582

■ 13, 14.888, 22.582

■ 43, 14.888, 22.582

■ 3, 14.888, 22.582

■ 53, 14.888, 22.582

■ 0, 14.888, 22.582

■ 63, 14.888, 22.582

■ 73, 14.888, 22.582

■ 83, 14.888, 22.582

■ 93, 14.888, 22.582

■ 23, 14.888, 22.582

■ 23, 14.888, 22.582

■ 21, 19.278, 24.016

■ 25, 10.709, 21.462

■ 19, 23.819, 25.833

■ 28, 6.777, 20.568

■ 17, 28.414, 28.113

■ 30, 3.099, 19.825

■ 15, 32.731, 30.288

■ 33, 0.329, 200.207

■ 14, 36.021, 31.112

■ 36, 3.523, 198.995

■ 13, 39.059, 31.341

■ 38, 6.502, 198.598

■ 13, 39.371, 31.340

■ 41, 9.287, 198.290

■ 43, 11.900,
198.040

■ 46, 14.359,
197.834

Harmonies

Complementary

The Complementary color scheme is a pair of colors which are on the opposite of each other on the color wheel.



23, 14.888, 22.582



30, 11.651, 197.706

Rectangle

The Rectangle color scheme consists of four colors that form a rectangle on the color wheel.



23, 14.888, 22.582



23, 14.888, 72.582



23, 14.888, 202.582



23, 14.888, 252.582

Sweetspot

The Sweet Spot groups the original color and five complimentary colors.



23, 14.887, 22.586



38, 5.172, 20.071



24, 23.150, 325.849



19, 3.466, 20.111



73, 0.009, 296.813



21, 0.004, 296.813

Same Dimension

The Same Dimension uses a secret algorithm to generate beautiful new colors.



23, 14.887, 22.586



28, 22.861, 23.968



27, 12.272, 69.311



14, 1.910, 19.799



19, 50.502, 35.960



48, 96.567, 40.000

Inverse Universe

The Inverse Universe completely reimagines the original color for something new.



23, 14.887, 22.586



28, 22.861, 23.968



26, 10.998, 259.327



14, 1.910, 19.799



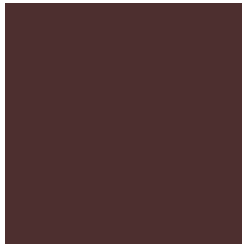
19, 50.502, 35.960



48, 96.567, 40.000

Previews

White Background



This preview shows how the CIE LCh color 23, 14.888, 22.582 looks on a white background.

Color Contrast Check

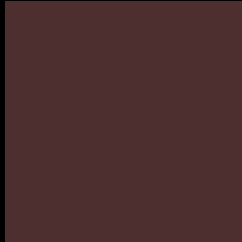
Large Text (above 18pt) WCAG AA ✓ Pass

Any Text WCAG AA ✓ Pass

Large Text (above 18pt) WCAG AAA ✓ Pass

Any Text WCAG AAA ✓ Pass

Black Background



This preview shows how the CIE LCh color 23, 14.888, 22.582 looks on a black background.

Color Contrast Check

Large Text (above 18pt) WCAG AA × Fail

Any Text WCAG AA × Fail

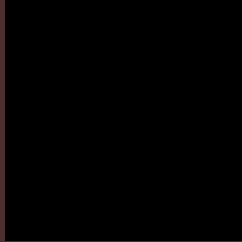
Large Text (above 18pt) WCAG AAA × Fail

Any Text WCAG AAA × Fail

If you want to check with other color combinations, try the [Color Contrast Checker](#).

CIELCh 23, 14.888, 22.582

Background



This preview shows how black text looks on a background with the CIELCh color 23, 14.888, 22.582.

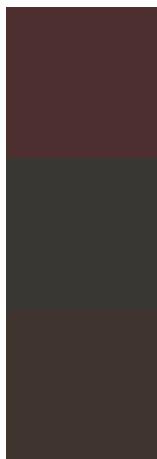


This preview shows how white text looks on a background with the CIELCh color 23, 14.888, 22.582.

Color Blindness Simulation

Color vision deficiency is a very complex topic, and I could not describe the different causes any better than Wikipedia does, so if you want to learn more, you should check out their [article about color blindness](#).

Dichromacy



Original Color

23, 14.888, 22.582

Protanopia

23, 2.813, 89.975

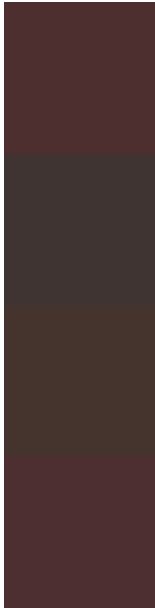
Deuteranopia

23, 7.188, 60.138



Tritanopia
23, 15.238, 12.969

Trichromacy



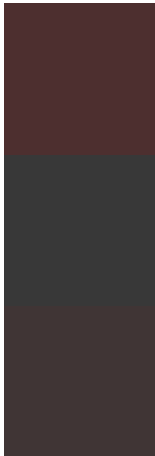
Original Color
23, 14.888, 22.582

Protanomaly
23, 5.951, 33.292

Deuteranomaly
23, 9.613, 40.983

Tritanomaly
23, 15.244, 15.434

Monochromacy



Original Color
23, 14.888, 22.582

Achromatopsia
24, 0.004, 296.813

Achromatomaly
23, 5.217, 20.385

CSS Examples

Text

The CSS property to change the color of the text to CIELCh 23, 14.888, 22.582 is called "color". The color property can be set on classes, ids or directly on the HTML element.

This example shows how text in the color `rgb(77, 47, 47)` looks like.

```
.text, #text, p{  
    color:rgb(77, 47, 47)  
}
```

If you want to add a text shadow in that color use the text-shadow property, you can generate a text shadow directly with our [CSS Text Shadow Generator](#).

Here you see how black text with a 4 pixel rgb(77, 47, 47) colored shadow looks like.

```
.shadow{ text-shadow: 4px 4px 2px rgb(77, 47, 47) }
```

Border

The CSS property to change the border of an element to CIELCh 23, 14.888, 22.582 is called "border". The border property can be set on classes, ids or directly on the HTML element.

This example shows the color as border, it can be applied via the CSS property "border" or "border-color".

```
.border, #border, table{ border:4px solid rgb(77, 47, 47) }
```

If only the border color should be changed use the property border-color.

```
.border{ border-color:rgb(77, 47, 47) }
```

If you want to add a box shadow in that color use:

Here you see how a box with a 4 pixel rgb(77, 47, 47) colored shadow looks like.

```
.boxshadow{ -moz-box-shadow:4px 4px 4px  
4px rgb(77, 47, 47); -webkit-box-  
shadow:4px 4px 4px 4px rgb(77, 47, 47);  
box-shadow:4px 4px 4px 4px rgb(77, 47, 47)  
}
```

Background

The CSS property to change the background color of an element to CIELCh 23, 14.888, 22.582 is called "background". The background property can be set on classes, ids or directly on the HTML element.

```
.background, #background, body{  
background: rgb(77, 47, 47) }
```

If only the background color should be changed can be used:

```
.background{ background-color: rgb(77, 47,  
47) }
```

This example shows the color as background, it is applied via the CSS property "background".

To optimize and compress your CSS code, you can use our [online CSS compressor and optimizer](#) based on csstidy. If you want to create a linear or radial gradient as background or border, check our [CSS Gradient Generator](#).

Hey! You found this booklet interesting? Support Converting Colors with the new Membership Option!

The pro membership hides all ads, plus gives you double the colors in the color bucket, and more awesome pro features!

[Learn more, Memberships starting at \\$2.50/m!](#)

**Follow me
on Twitter!**

@ConvertingColor