

Converting Colors

CIELCh(23, 15.429, 19.178)

Have a look what the booklet for
CIELCh(23, 15.429, 19.178) contains.

CIELCh(23, 15.779, 18.168)	3
<i>Conversions</i>	4
<i>Details</i>	6
<i>Harmonies</i>	11
<i>Previews</i>	20
<i>Color Blindness Simulation</i>	23
<i>CSS Examples</i>	26

Color

CIELCh(23, 15.779, 18.168)

Conversions

Conversions Part 1

Format	Color
Hex	4E2E30
RGB	78, 46, 48
RGB Percent	31%, 18%, 19%
CMY	0.6937, 0.8192, 0.8114
CMYK	0.00, 0.41, 0.38, 0.69
HSL	356°, 26%, 24%
HSV	356°, 41%, 31%
XYZ	4.6673, 3.8003, 3.2944
YIQ	55.7960, 18.4300, 7.4060

Conversions

Conversions Part 2

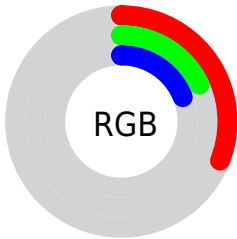
Format	Color
R_{YB}	78, 46, 48
Decimal	5123632
CIE _{Lab}	23.00, 14.99, 4.92
CIE _{LCh}	23, 15.779, 18.168
Yxy	3.8003, 0.3968, 0.3231
Android (android.graphics.Color)	4283313712 (0xFF4E2E30)
YUV	55.7960, -3.8434, 19.4729
Hunter-Lab	19.4944, 8.6206, 3.6264

Details

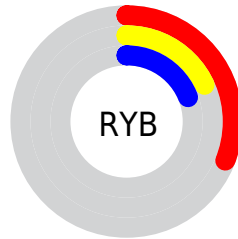
The CIELCh color **23, 15.779, 18.168** is a dark color, and the websafe version is hex **663333**. A complement of this color would be **31, 12.556, 191.708**, and the grayscale version is **23, 0.004, 296.813**.

A 20% lighter version of the original color is **43, 15.777, 17.277**, and **3, 15.353, 19.405** is the 20% darker color. If you saturate the color by 10%, you get **21, 20.113, 19.789**, and if you desaturate by 10%, it is **25, 11.597, 16.874**.

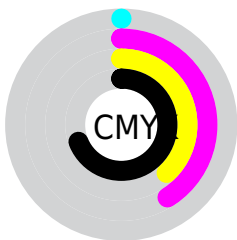
Distribution



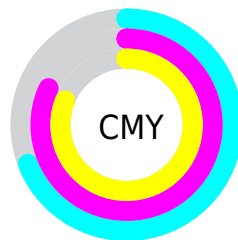
- Red (31%)
- Green (18%)
- Blue (19%)



- Red (31%)
- Yellow (18%)
- Blue (19%)



- Cyan (0%)
- Magenta (41%)
- Yellow (38%)
- Black (69%)



- Cyan (69%)
- Magenta (82%)
- Yellow (81%)

Brightness & Saturation Gradients

These gradients show how the CIELCh color 23, 15.779, 18.168 changes by changing the brightness by 10 percent. The first figure shows a shift by +10% for each color and the second figure -10%.

Similar to the brightness gradients but the following saturation gradients show a change of the CIELCh color 23, 15.779, 18.168 by changing the saturation by 10% instead.

■ 23, 15.779, 18.168

■ 23, 15.779, 18.168

■ 100, 15.779,
18.168

■ 13, 15.779, 18.168

■ 43, 15.779, 18.168

■ 3, 15.779, 18.168

■ 53, 15.779, 18.168

■ 0, 15.779, 18.168

■ 63, 15.779, 18.168

■ 73, 15.779, 18.168

■ 83, 15.779, 18.168

■ 93, 15.779, 18.168

■ 23, 15.779, 18.168

■ 23, 15.779, 18.168

21, 20.113, 19.789

25, 11.597, 16.874

19, 24.525, 21.815

28, 7.617, 15.818

17, 28.906, 24.339

30, 3.861, 14.930

16, 33.076, 27.233

33, 0.334, 13.469

14, 36.407, 28.942

36, 2.973, 193.800

13, 39.123, 29.149

38, 6.074, 193.252

41, 8.987, 192.808

44, 11.729,
192.429

46, 14.319,
192.099

Harmonies

Complementary

The Complementary color scheme is a pair of colors which are on the opposite of each other on the color wheel.



23, 15.779, 18.168



31, 12.556, 191.708

Rectangle

The Rectangle color scheme consists of four colors that form a rectangle on the color wheel.



23, 15.779, 18.168



23, 15.779, 68.168



23, 15.779, 198.168



23, 15.779, 248.168

Sweetspot

The Sweet Spot groups the original color and five complimentary colors.



23, 15.778, 18.172



39, 5.288, 15.054



24, 24.317, 324.472



19, 3.469, 15.097



73, 0.009, 296.813



21, 0.004, 296.813

Same Dimension

The Same Dimension uses a secret algorithm to generate beautiful new colors.



23, 15.778, 18.172



28, 24.099, 19.759



27, 12.949, 63.800



14, 1.915, 14.733



19, 49.194, 33.470



48, 94.082, 38.049

Inverse Universe

The Inverse Universe completely reimagines the original color for something new.



23, 15.778, 18.172



28, 24.099, 19.759



26, 11.142, 253.716



14, 1.915, 14.733



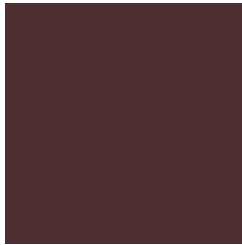
19, 49.194, 33.470



48, 94.082, 38.049

Previews

White Background



This preview shows how the CIE LCh color 23, 15.779, 18.168 looks on a white background.

Color Contrast Check

Large Text (above 18pt) WCAG AA ✓ Pass

Any Text WCAG AA ✓ Pass

Large Text (above 18pt) WCAG AAA ✓ Pass

Any Text WCAG AAA ✓ Pass

Black Background



This preview shows how the CIELCh color 23, 15.779, 18.168 looks on a black background.

Color Contrast Check

Large Text (above 18pt) WCAG AA × Fail

Any Text WCAG AA × Fail

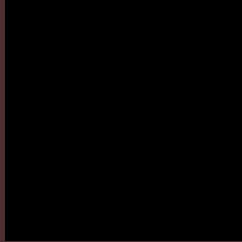
Large Text (above 18pt) WCAG AAA × Fail

Any Text WCAG AAA × Fail

If you want to check with other color combinations, try the [Color Contrast Checker](#).

CIELCh 23, 15.779, 18.168

Background



This preview shows how black text looks on a background with the CIELCh color 23, 15.779, 18.168.

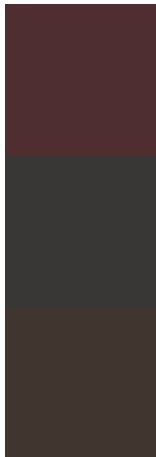


This preview shows how white text looks on a background with the CIELCh color 23, 15.779, 18.168.

Color Blindness Simulation

Color vision deficiency is a very complex topic, and I could not describe the different causes any better than Wikipedia does, so if you want to learn more, you should check out their [article about color blindness](#).

Dichromacy



Original Color

23, 15.779, 18.168

Protanopia

23, 1.615, 74.599

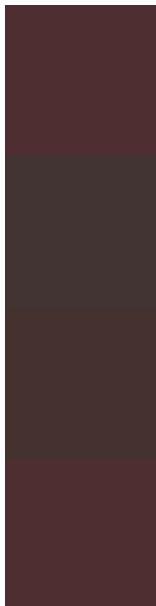
Deuteranopia

23, 6.744, 56.150



Tritanopia
23, 15.736, 15.790

Trichromacy



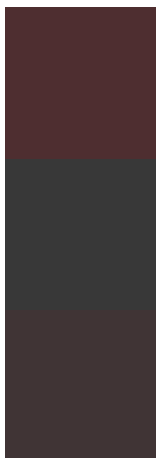
Original Color
23, 15.779, 18.168

Protanomaly
23, 6.288, 26.608

Deuteranomaly
23, 9.642, 33.009

Tritanomaly
23, 15.736, 15.790

Monochromacy



Original Color
23, 15.779, 18.168

Achromatopsia
24, 0.004, 296.813

Achromatomaly
23, 5.724, 13.891

CSS Examples

Text

The CSS property to change the color of the text to CIELCh 23, 15.779, 18.168 is called "color". The color property can be set on classes, ids or directly on the HTML element.

This example shows how text in the color `rgb(78, 46, 48)` looks like.

```
.text, #text, p{  
    color:rgb(78, 46, 48)  
}
```

If you want to add a text shadow in that color use the text-shadow property, you can generate a text shadow directly with our [CSS Text Shadow Generator](#).

Here you see how black text with a 4 pixel rgb(78, 46, 48) colored shadow looks like.

```
.shadow{ text-shadow: 4px 4px 2px rgb(78, 46, 48) }
```

Border

The CSS property to change the border of an element to CIELCh 23, 15.779, 18.168 is called "border". The border property can be set on classes, ids or directly on the HTML element.

This example shows the color as border, it can be applied via the CSS property "border" or "border-color".

```
.border, #border, table{ border:4px solid rgb(78, 46, 48) }
```

If only the border color should be changed use the property `border-color`.

```
.border{ border-color:rgb(78, 46, 48) }
```

If you want to add a box shadow in that color use:

Here you see how a box with a 4 pixel `rgb(78, 46, 48)` colored shadow looks like.

```
.boxshadow{ -moz-box-shadow:4px 4px 4px  
4px rgb(78, 46, 48); -webkit-box-  
shadow:4px 4px 4px 4px rgb(78, 46, 48);  
box-shadow:4px 4px 4px 4px rgb(78, 46, 48)  
}
```

Background

The CSS property to change the background color of an element to CIELCh 23, 15.779, 18.168 is called "background". The background property can be set on classes, ids or directly on the HTML element.

```
.background, #background, body{  
background: rgb(78, 46, 48) }
```

If only the background color should be changed can be used:

```
.background{ background-color: rgb(78, 46,  
48) }
```

This example shows the color as background, it is applied via the CSS property "background".

To optimize and compress your CSS code, you can use our [online CSS compressor and optimizer](#) based on csstidy. If you want to create a linear or radial gradient as background or border, check our [CSS Gradient Generator](#).

Hey! You found this booklet interesting? Support Converting Colors with the new Membership Option!

The pro membership hides all ads, plus gives you double the colors in the color bucket, and more awesome pro features!

[Learn more, Memberships starting at \\$2.50/m!](#)

**Follow me
on Twitter!**

@ConvertingColor