

Converting Colors

CIELCh(23, 6.793, 7.679)

Have a look what the booklet for
CIELCh(23, 6.793, 7.679) contains.

CIELCh(23, 6.889, 4.056)	3
<i>Conversions</i>	4
<i>Details</i>	6
<i>Harmonies</i>	11
<i>Previews</i>	20
<i>Color Blindness Simulation</i>	23
<i>CSS Examples</i>	26

Color

CIELCh(23, 6.889, 4.056)

Conversions

Conversions Part 1

Format	Color
Hex	413336
RGB	65, 51, 54
RGB Percent	25%, 20%, 21%
CMY	0.7438, 0.7987, 0.7870
CMYK	0.00, 0.21, 0.17, 0.74
HSL	347°, 12%, 23%
HSV	347°, 21%, 26%
XYZ	4.0734, 3.8003, 4.0486
YIQ	55.5280, 7.3810, 3.9010

Conversions

Conversions Part 2

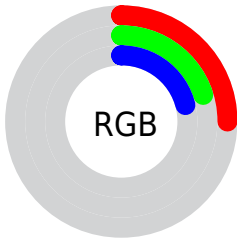
Format	Color
RYB	65, 51, 54
Decimal	4272950
CIELab	23.00, 6.87, 0.49
CIELCh	23, 6.889, 4.056
Yxy	3.8003, 0.3417, 0.3188
Android (android.graphics.Color)	4282463030 (0xFF413336)
YUV	55.5280, -0.7533, 8.3069
Hunter-Lab	19.4944, 3.1828, 1.3327

Details

The CIELCh color **23, 6.889, 4.056** is a dark color, and the websafe version is hex **333333**. A complement of this color would be **26, 6.407, 180.484**, and the grayscale version is **23, 0.004, 296.813**.

A 20% lighter version of the original color is **43, 7.162, 0.790**, and **3, 6.775, 2.088** is the 20% darker color. If you saturate the color by 10%, you get **21, 10.301, 5.193**, and if you desaturate by 10%, it is **25, 3.597, 3.069**.

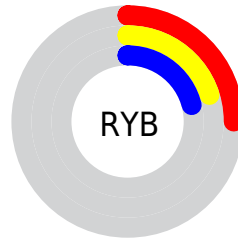
Distribution



Red (25%)

Green (20%)

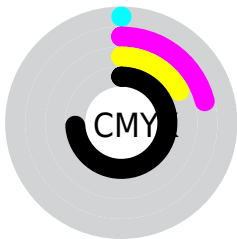
Blue (21%)



Red (25%)

Yellow (20%)

Blue (21%)

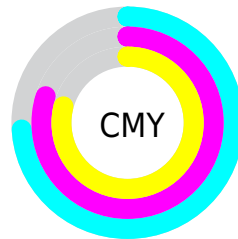


Cyan (0%)

Magenta (21%)

Yellow (17%)

Black (74%)



Cyan (74%)

Magenta (80%)

Yellow (79%)

Brightness & Saturation Gradients

These gradients show how the CIELCh color 23, 6.889, 4.056 changes by changing the brightness by 10 percent. The first figure shows a shift by +10% for each color and the second figure -10%.

Similar to the brightness gradients but the following saturation gradients show a change of the CIELCh color 23, 6.889, 4.056 by changing the saturation by 10% instead.

■ 23, 6.889, 4.056

■ 23, 6.889, 4.056

■ 100, 6.889, 4.056

■ 13, 6.889, 4.056

■ 43, 6.889, 4.056

■ 3, 6.889, 4.056

■ 53, 6.889, 4.056

■ 0, 6.889, 4.056

■ 63, 6.889, 4.056

■ 73, 6.889, 4.056

■ 83, 6.889, 4.056

■ 93, 6.889, 4.056

■ 23, 6.889, 4.056

■ 23, 6.889, 4.056

■ 21, 10.301, 5.193

■ 25, 3.597, 3.069

19, 13.801, 6.523

27, 0.446, 1.782

17, 17.334, 8.116

30, 2.561, 181.647

15, 20.818, 10.051

32, 5.426, 180.944

14, 24.150, 12.426

34, 8.156, 180.340

12, 27.222, 15.350

36, 10.759,
179.799

11, 30.023, 17.914

39, 13.245,
179.308

10, 32.507, 18.545

41, 15.625,
178.859

43, 17.908,
178.445

Harmonies

Complementary

The Complementary color scheme is a pair of colors which are on the opposite of each other on the color wheel.



23, 6.889, 4.056



26, 6.407, 180.484

Rectangle

The Rectangle color scheme consists of four colors that form a rectangle on the color wheel.



23, 6.889, 4.056



23, 6.889, 54.056



23, 6.889, 184.056



23, 6.889, 234.056

Sweetspot

The Sweet Spot groups the original color and five complimentary colors.



23, 6.888, 4.061



34, 2.301, 2.566



23, 10.559, 319.129



17, 1.540, 2.584



70, 0.009, 296.813



18, 0.003, 296.813

Same Dimension

The Same Dimension uses a secret algorithm to generate beautiful new colors.



23, 6.888, 4.061



29, 10.425, 4.676



24, 5.505, 48.423



12, 1.758, 2.791



18, 44.046, 24.504



47, 84.144, 29.136

Inverse Universe

The Inverse Universe completely reimagines the original color for something new.



23, 6.888, 4.061



29, 10.425, 4.676



25, 4.927, 230.992



12, 1.758, 2.791



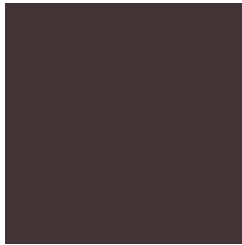
18, 44.046, 24.504



47, 84.144, 29.136

Previews

White Background



This preview shows how the CIELCh color 23, 6.889, 4.056 looks on a white background.

Color Contrast Check

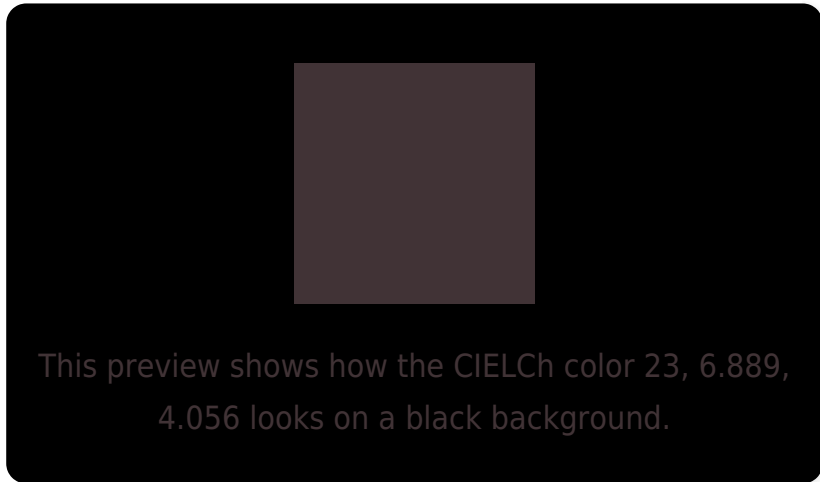
Large Text (above 18pt) WCAG AA ✓ Pass

Any Text WCAG AA ✓ Pass

Large Text (above 18pt) WCAG AAA ✓ Pass

Any Text WCAG AAA ✓ Pass

Black Background



Color Contrast Check

Large Text (above 18pt) WCAG AA × Fail

Any Text WCAG AA × Fail

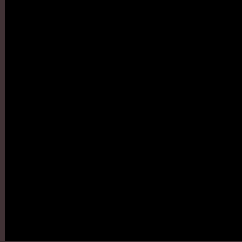
Large Text (above 18pt) WCAG AAA × Fail

Any Text WCAG AAA × Fail

If you want to check with other color combinations, try the [Color Contrast Checker](#).

CIELCh 23, 6.889, 4.056

Background



This preview shows how black text looks on a background with the CIELCh color 23, 6.889, 4.056.

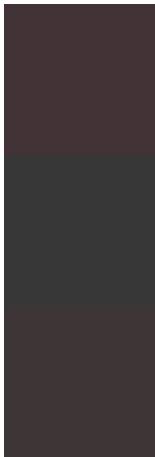


This preview shows how white text looks on a background with the CIELCh color 23, 6.889, 4.056.

Color Blindness Simulation

Color vision deficiency is a very complex topic, and I could not describe the different causes any better than Wikipedia does, so if you want to learn more, you should check out their [article about color blindness](#).

Dichromacy



Original Color

23, 6.889, 4.056

Protanopia

23, 0.816, 324.396

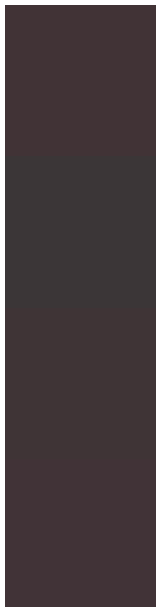
Deuteranopia

23, 3.807, 10.076



Tritanopia
23, 7.074, 358.855

Trichromacy



Original Color

23, 6.889, 4.056

Protanomaly

23, 2.416, 3.834

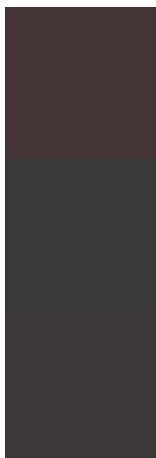
Deuteranomaly

23, 5.339, 6.083

Tritanomaly

23, 7.074, 358.855

Monochromacy



Original Color

23, 6.889, 4.056

Achromatopsia

24, 0.004, 296.813

Achromatomaly

23, 2.416, 3.834

CSS Examples

Text

The CSS property to change the color of the text to CIELCh 23, 6.889, 4.056 is called "color". The color property can be set on classes, ids or directly on the HTML element.

This example shows how text in the color `rgb(65, 51, 54)` looks like.

```
.text, #text, p{  
    color:rgb(65, 51, 54)  
}
```

If you want to add a text shadow in that color use the text-shadow property, you can generate a text shadow directly with our [CSS Text Shadow Generator](#).

Here you see how black text with a 4 pixel rgb(65, 51, 54) colored shadow looks like.

```
.shadow{ text-shadow: 4px 4px 2px rgb(65, 51, 54) }
```

Border

The CSS property to change the border of an element to CIELCh 23, 6.889, 4.056 is called "border". The border property can be set on classes, ids or directly on the HTML element.

This example shows the color as border, it can be applied via the CSS property "border" or "border-color".

```
.border, #border, table{ border:4px solid rgb(65, 51, 54) }
```

If only the border color should be changed use the property `border-color`.

```
.border{ border-color:rgb(65, 51, 54) }
```

If you want to add a box shadow in that color use:

Here you see how a box with a 4 pixel `rgb(65, 51, 54)` colored shadow looks like.

```
.boxshadow{ -moz-box-shadow:4px 4px 4px  
4px rgb(65, 51, 54); -webkit-box-  
shadow:4px 4px 4px 4px rgb(65, 51, 54);  
box-shadow:4px 4px 4px 4px rgb(65, 51, 54)  
}
```

Background

The CSS property to change the background color of an element to CIELCh 23, 6.889, 4.056 is called "background". The background property can be set on classes, ids or directly on the HTML element.

```
.background, #background, body{  
background: rgb(65, 51, 54) }
```

If only the background color should be changed can be used:

```
.background{ background-color: rgb(65, 51,  
54) }
```

This example shows the color as background, it is applied via the CSS property "background".

To optimize and compress your CSS code, you can use our [online CSS compressor and optimizer](#) based on csstidy. If you want to create a linear or radial gradient as background or border, check our [CSS Gradient Generator](#).

Hey! You found this booklet interesting? Support Converting Colors with the new Membership Option!

The pro membership hides all ads, plus gives you double the colors in the color bucket, and more awesome pro features!

[Learn more, Memberships starting at \\$2.50/m!](#)

**Follow me
on Twitter!**

@ConvertingColor