

Converting Colors

CIELCh(25, 16.853, 16.077)

Have a look what the booklet for
CIELCh(25, 16.853, 16.077) contains.

CIELCh(25, 16.511, 16.195)	3
<i>Conversions</i>	4
<i>Details</i>	6
<i>Harmonies</i>	11
<i>Previews</i>	20
<i>Color Blindness Simulation</i>	23
<i>CSS Examples</i>	26

Color

CIELCh(25, 16.511, 16.195)

Conversions

Conversions Part 1

Format	Color
Hex	543235
RGB	84, 50, 53
RGB Percent	33%, 20%, 21%
CMY	0.6708, 0.8041, 0.7924
CMYK	0.00, 0.40, 0.37, 0.67
HSL	355°, 25%, 26%
HSV	355°, 40%, 33%
XYZ	5.4308, 4.4155, 3.9280
YIQ	60.5080, 19.3010, 8.1410

Conversions

Conversions Part 2

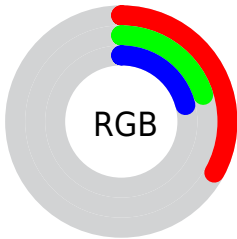
Format	Color
R_{YB}	84, 50, 53
Decimal	5517877
CIE _{Lab}	25.00, 15.86, 4.61
CIE _{LCh}	25, 16.511, 16.195
Yxy	4.4155, 0.3943, 0.3206
Android (android.graphics.Color)	4283707957 (0xFF543235)
YUV	60.5080, -3.7014, 20.6025
Hunter-Lab	21.0130, 9.3601, 3.6260

Details

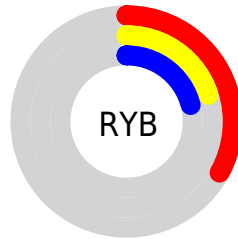
The CIELCh color **25, 16.511, 16.195** is a dark color, and the websafe version is hex **663333**. A complement of this color would be **33, 13.320, 189.335**, and the grayscale version is **26, 0.004, 296.813**.

A 20% lighter version of the original color is **45, 16.505, 17.524**, and **5, 16.334, 15.212** is the 20% darker color. If you saturate the color by 10%, you get **23, 21.054, 17.864**, and if you desaturate by 10%, it is **28, 12.108, 14.855**.

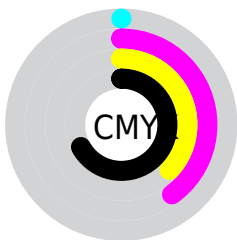
Distribution



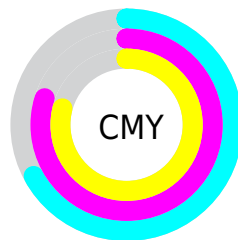
- Red (33%)
- Green (20%)
- Blue (21%)



- Red (33%)
- Yellow (20%)
- Blue (21%)



- Cyan (0%)
- Magenta (40%)
- Yellow (37%)
- Black (67%)



- Cyan (67%)
- Magenta (80%)
- Yellow (79%)


Brightness & Saturation Gradients

These gradients show how the CIELCh color 25, 16.511, 16.195 changes by changing the brightness by 10 percent. The first figure shows a shift by +10% for each color and the second figure -10%.

Similar to the brightness gradients but the following saturation gradients show a change of the CIELCh color 25, 16.511, 16.195 by changing the saturation by 10% instead.

 25, 16.511, 16.195

 25, 16.511, 16.195

 100, 16.511,
16.195

 15, 16.511, 16.195

 45, 16.511, 16.195

 5, 16.511, 16.195

 55, 16.511, 16.195

 0, 16.511, 16.195

 65, 16.511, 16.195

 75, 16.511, 16.195

 85, 16.511, 16.195

 95, 16.511, 16.195

 25, 16.511, 16.195

 25, 16.511, 16.195

23, 21.054, 17.864

28, 12.108, 14.855

21, 25.653, 19.945

30, 7.904, 13.755

19, 30.187, 22.541

33, 3.926, 12.822

17, 34.526, 25.727

36, 0.180, 10.551

16, 38.257, 28.602

38, 3.338, 191.600

15, 41.265, 29.416

41, 6.644, 191.014

44, 9.754, 190.529

47, 12.687,
190.110

50, 15.461,
189.740

Harmonies

Complementary

The Complementary color scheme is a pair of colors which are on the opposite of each other on the color wheel.



25, 16.511, 16.195



33, 13.320, 189.335

Rectangle

The Rectangle color scheme consists of four colors that form a rectangle on the color wheel.



25, 16.511, 16.195



25, 16.511, 66.195



25, 16.511, 196.195



25, 16.511, 246.195

Sweetspot

The Sweet Spot groups the original color and five complimentary colors.



25, 16.510, 16.199



42, 5.630, 12.994



26, 25.318, 323.476



21, 3.772, 13.052



75, 0.009, 296.813



24, 0.004, 296.813

Same Dimension

The Same Dimension uses a secret algorithm to generate beautiful new colors.



25, 16.510, 16.199



31, 25.484, 17.903



29, 13.525, 60.218



15, 2.031, 12.661



20, 49.702, 32.716



49, 93.668, 37.035

Inverse Universe

The Inverse Universe completely reimagines the original color for something new.



25, 16.510, 16.199



31, 25.484, 17.903



29, 11.383, 249.413



15, 2.031, 12.661



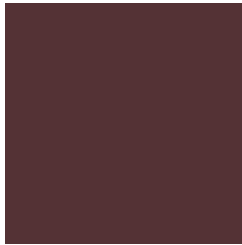
20, 49.702, 32.716



49, 93.668, 37.035

Previews

White Background



This preview shows how the CIE LCh color 25, 16.511, 16.195 looks on a white background.

Color Contrast Check

Large Text (above 18pt) WCAG AA ✓ Pass

Any Text WCAG AA ✓ Pass

Large Text (above 18pt) WCAG AAA ✓ Pass

Any Text WCAG AAA ✓ Pass

Black Background



This preview shows how the CIELCh color 25, 16.511, 16.195 looks on a black background.

Color Contrast Check

Large Text (above 18pt) WCAG AA × Fail

Any Text WCAG AA × Fail

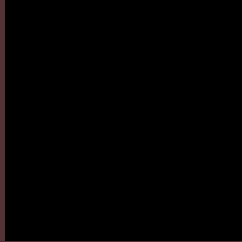
Large Text (above 18pt) WCAG AAA × Fail

Any Text WCAG AAA × Fail

If you want to check with other color combinations, try the [Color Contrast Checker](#).

CIELCh 25, 16.511, 16.195

Background



This preview shows how black text looks on a background with the CIELCh color 25, 16.511, 16.195.

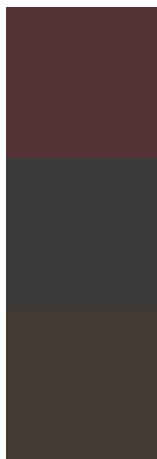


This preview shows how white text looks on a background with the CIELCh color 25, 16.511, 16.195.

Color Blindness Simulation

Color vision deficiency is a very complex topic, and I could not describe the different causes any better than Wikipedia does, so if you want to learn more, you should check out their [article about color blindness](#).

Dichromacy



Original Color

25, 16.511, 16.195

Protanopia

25, 1.121, 55.173

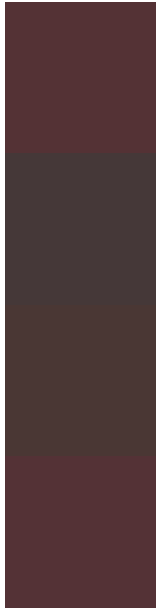
Deuteranopia

25, 6.237, 58.891



Tritanopia
25, 16.493, 13.949

Trichromacy



Original Color
25, 16.511, 16.195

Protanomaly
25, 6.129, 20.529

Deuteranomaly
25, 9.466, 32.936

Tritanomaly
25, 16.493, 13.949

Monochromacy



Original Color
25, 16.511, 16.195

Achromatopsia
25, 0.004, 296.813

Achromatomaly
25, 6.127, 14.430

CSS Examples

Text

The CSS property to change the color of the text to CIELCh 25, 16.511, 16.195 is called "color". The color property can be set on classes, ids or directly on the HTML element.

This example shows how text in the color `rgb(84, 50, 53)` looks like.

```
.text, #text, p{  
    color:rgb(84, 50, 53)  
}
```

If you want to add a text shadow in that color use the text-shadow property, you can generate a text shadow directly with our [CSS Text Shadow Generator](#).

Here you see how black text with a 4 pixel rgb(84, 50, 53) colored shadow looks like.

```
.shadow{ text-shadow: 4px 4px 2px rgb(84, 50, 53) }
```

Border

The CSS property to change the border of an element to CIELCh 25, 16.511, 16.195 is called "border". The border property can be set on classes, ids or directly on the HTML element.

This example shows the color as border, it can be applied via the CSS property "border" or "border-color".

```
.border, #border, table{ border:4px solid rgb(84, 50, 53) }
```

If only the border color should be changed use the property `border-color`.

```
.border{ border-color:rgb(84, 50, 53) }
```

If you want to add a box shadow in that color use:

Here you see how a box with a 4 pixel `rgb(84, 50, 53)` colored shadow looks like.

```
.boxshadow{ -moz-box-shadow:4px 4px 4px  
4px rgb(84, 50, 53); -webkit-box-  
shadow:4px 4px 4px 4px rgb(84, 50, 53);  
box-shadow:4px 4px 4px 4px rgb(84, 50, 53)  
}
```

Background

The CSS property to change the background color of an element to CIELCh 25, 16.511, 16.195 is called "background". The background property can be set on classes, ids or directly on the HTML element.

```
.background, #background, body{  
background: rgb(84, 50, 53) }
```

If only the background color should be changed can be used:

```
.background{ background-color: rgb(84, 50,  
53) }
```

This example shows the color as background, it is applied via the CSS property "background".

To optimize and compress your CSS code, you can use our [online CSS compressor and optimizer](#) based on csstidy. If you want to create a linear or radial gradient as background or border, check our [CSS Gradient Generator](#).

Hey! You found this booklet interesting? Support Converting Colors with the new Membership Option!

The pro membership hides all ads, plus gives you double the colors in the color bucket, and more awesome pro features!

[Learn more, Memberships starting at \\$2.50/m!](#)

**Follow me
on Twitter!**

@ConvertingColor