

Converting Colors

CIELCh(25, 9.533, 45.918)

Have a look what the booklet for
CIELCh(25, 9.533, 45.918) contains.

CIELCh(25, 9.627, 48.887)	3
<i>Conversions</i>	4
<i>Details</i>	6
<i>Harmonies</i>	11
<i>Previews</i>	20
<i>Color Blindness Simulation</i>	23
<i>CSS Examples</i>	26

Color

CIELCh(25, 9.627, 48.887)

Conversions

Conversions Part 1

Format	Color
Hex	493831
RGB	73, 56, 49
RGB Percent	29%, 22%, 19%
CMY	0.7152, 0.7818, 0.8092
CMYK	0.00, 0.23, 0.33, 0.72
HSL	18°, 20%, 24%
HSV	18°, 33%, 28%
XYZ	4.6641, 4.4155, 3.4745
YIQ	60.2850, 12.3790, 1.4270

Conversions

Conversions Part 2

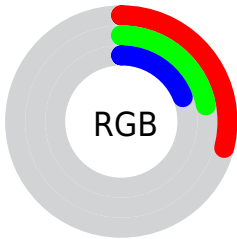
Format	Color
RYB	73, 59, 49
Decimal	4798513
CIELab	25.00, 6.33, 7.25
CIELCh	25, 9.627, 48.887
Yxy	4.4155, 0.3715, 0.3517
Android (android.graphics.Color)	4282988593 (0xFF493831)
YUV	60.2850, -5.5635, 11.1511
Hunter-Lab	21.0130, 2.8475, 4.9056

Details

The CIELCh color $[25, 9.627, 48.887]$ is a dark color, and the websafe version is hex 333333 . A complement of this color would be $[27, 8.037, 233.330]$, and the grayscale version is $[25, 0.004, 296.813]$.

A 20% lighter version of the original color is $[45, 9.579, 49.792]$, and $[5, 9.503, 50.744]$ is the 20% darker color. If you saturate the color by 10%, you get $[23, 12.994, 48.559]$, and if you desaturate by 10%, it is $[27, 6.479, 49.306]$.

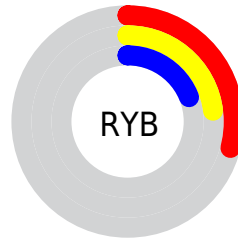
Distribution



 Red (29%)

 Green (22%)

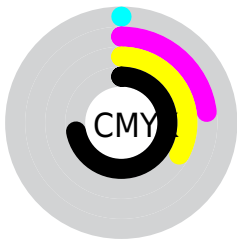
 Blue (19%)



 Red (29%)

 Yellow (23%)

 Blue (19%)

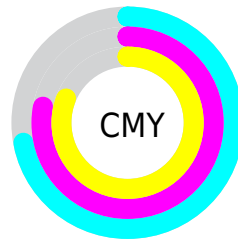


 Cyan (0%)

 Magenta (23%)

 Yellow (33%)

 Black (72%)



 Cyan (72%)

 Magenta (78%)


 Yellow (81%)

Brightness & Saturation Gradients

These gradients show how the CIELCh color 25, 9.627, 48.887 changes by changing the brightness by 10 percent. The first figure shows a shift by +10% for each color and the second figure -10%.

Similar to the brightness gradients but the following saturation gradients show a change of the CIELCh color 25, 9.627, 48.887 by changing the saturation by 10% instead.

 25, 9.627, 48.887  25, 9.627, 48.887

 100, 9.627, 48.887  15, 9.627, 48.887

 45, 9.627, 48.887  5, 9.627, 48.887

 55, 9.627, 48.887  0, 9.627, 48.887

 65, 9.627, 48.887

 75, 9.627, 48.887

 85, 9.627, 48.887

 95, 9.627, 48.887

 25, 9.627, 48.887  25, 9.627, 48.887

 23, 12.994, 48.559  27, 6.479, 49.306

■ 22, 16.585, 48.317

■ 29, 3.539, 49.764

■ 20, 20.392, 48.179

■ 30, 0.789, 50.060

■ 19, 24.377, 48.135

■ 32, 1.786, 231.085

■ 17, 27.983, 47.265

■ 34, 4.206, 231.603

■ 16, 30.895, 45.497

■ 36, 6.486, 232.194

■ 15, 32.864, 44.630

■ 38, 8.642, 232.802

■ 40, 10.688,
233.414

■ 41, 12.637,
234.022

Harmonies

Complementary

The Complementary color scheme is a pair of colors which are on the opposite of each other on the color wheel.



25, 9.627, 48.887



27, 8.037, 233.330

Rectangle

The Rectangle color scheme consists of four colors that form a rectangle on the color wheel.



25, 9.627, 48.887



25, 9.627, 98.887



25, 9.627, 228.887



25, 9.627, 278.887

Sweetspot

The Sweet Spot groups the original color and five complimentary colors.



25, 9.627, 48.895



38, 3.350, 49.882



24, 15.512, 335.706



19, 2.311, 49.851



72, 0.009, 296.813



20, 0.004, 296.813

Same Dimension

The Same Dimension uses a secret algorithm to generate beautiful new colors.



25, 9.627, 48.895



31, 14.937, 48.602



29, 12.276, 95.889



13, 1.472, 49.960



22, 44.666, 46.908



52, 87.385, 46.608

Inverse Universe

The Inverse Universe completely reimagines the original color for something new.



27, 8.037, 233.330



34, 11.806, 234.428



23, 12.649, 283.589



13, 1.413, 231.184



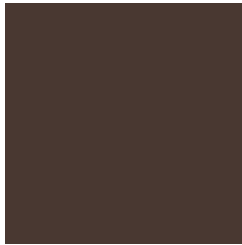
28, 23.661, 251.334



62, 44.535, 255.301

Previews

White Background



This preview shows how the CIELCh color 25, 9.627, 48.887 looks on a white background.

Color Contrast Check

Large Text (above 18pt) WCAG AA ✓ Pass

Any Text WCAG AA ✓ Pass

Large Text (above 18pt) WCAG AAA ✓ Pass

Any Text WCAG AAA ✓ Pass

Black Background



This preview shows how the CIE LCh color 25, 9.627, 48.887 looks on a black background.

Color Contrast Check

Large Text (above 18pt) WCAG AA × Fail

Any Text WCAG AA × Fail

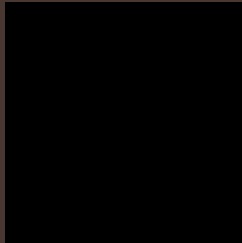
Large Text (above 18pt) WCAG AAA × Fail

Any Text WCAG AAA × Fail

If you want to check with other color combinations, try the [Color Contrast Checker](#).

CIELCh 25, 9.627, 48.887

Background



This preview shows how black text looks on a background with the CIELCh color 25, 9.627, 48.887.

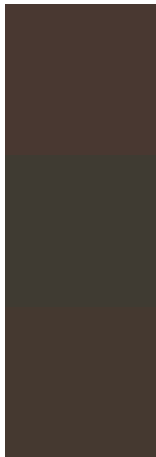


This preview shows how white text looks on a background with the CIELCh color 25, 9.627, 48.887.

Color Blindness Simulation

Color vision deficiency is a very complex topic, and I could not describe the different causes any better than Wikipedia does, so if you want to learn more, you should check out their [article about color blindness](#).

Dichromacy



Original Color

25, 9.627, 48.887

Protanopia

25, 6.206, 90.871

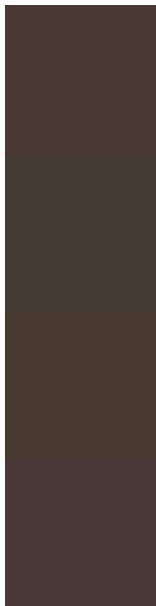
Deuteranopia

25, 8.407, 64.355



Tritanopia
25, 9.714, 5.796

Trichromacy



Original Color

25, 9.627, 48.887

Protanomaly

25, 6.852, 69.494

Deuteranomaly

25, 8.776, 62.092

Tritanomaly

25, 9.074, 21.128

Monochromacy



Original Color

25, 9.627, 48.887

Achromatopsia

25, 0.004, 296.813

Achromatomaly

25, 3.527, 41.674

CSS Examples

Text

The CSS property to change the color of the text to CIELCh 25, 9.627, 48.887 is called "color". The color property can be set on classes, ids or directly on the HTML element.

This example shows how text in the color `rgb(73, 56, 49)` looks like.

```
.text, #text, p{  
    color:rgb(73, 56, 49)  
}
```

If you want to add a text shadow in that color use the text-shadow property, you can generate a text shadow directly with our [CSS Text Shadow Generator](#).

Here you see how black text with a 4 pixel rgb(73, 56, 49) colored shadow looks like.

```
.shadow{ text-shadow: 4px 4px 2px rgb(73, 56, 49) }
```

Border

The CSS property to change the border of an element to CIELCh 25, 9.627, 48.887 is called "border". The border property can be set on classes, ids or directly on the HTML element.

This example shows the color as border, it can be applied via the CSS property "border" or "border-color".

```
.border, #border, table{ border:4px solid rgb(73, 56, 49) }
```

If only the border color should be changed use the property border-color.

```
.border{ border-color:rgb(73, 56, 49) }
```

If you want to add a box shadow in that color use:

Here you see how a box with a 4 pixel rgb(73, 56, 49) colored shadow looks like.

```
.boxshadow{ -moz-box-shadow:4px 4px 4px  
4px rgb(73, 56, 49); -webkit-box-  
shadow:4px 4px 4px 4px rgb(73, 56, 49);  
box-shadow:4px 4px 4px 4px rgb(73, 56, 49)  
}
```

Background

The CSS property to change the background color of an element to CIELCh 25, 9.627, 48.887 is called "background". The background property can be set on classes, ids or directly on the HTML element.

```
.background, #background, body{  
background: rgb(73, 56, 49) }
```

If only the background color should be changed can be used:

```
.background{ background-color: rgb(73, 56,  
49) }
```

This example shows the color as background, it is applied via the CSS property "background".

To optimize and compress your CSS code, you can use our [online CSS compressor and optimizer](#) based on csstidy. If you want to create a linear or radial gradient as background or border, check our [CSS Gradient Generator](#).

Hey! You found this booklet interesting? Support Converting Colors with the new Membership Option!

The pro membership hides all ads, plus gives you double the colors in the color bucket, and more awesome pro features!

[Learn more, Memberships starting at \\$2.50/m!](#)

**Follow me
on Twitter!**

@ConvertingColor