

# Converting Colors

CIELCh(26, 10.771, 57.387)

Have a look what the booklet for  
CIELCh(26, 10.771, 57.387) contains.

<b>CIELCh(26, 10.771, 57.387)</b> .....	3
<b><i>Conversions</i></b> .....	4
<b><i>Details</i></b> .....	6
<b><i>Harmonies</i></b> .....	11
<b><i>Previews</i></b> .....	20
<b><i>Color Blindness Simulation</i></b> .....	23
<b><i>CSS Examples</i></b> .....	26

# Color

**CIELCh(26, 10.771, 57.387)**

# Conversions

## Conversions Part 1

<b>Format</b>	<b>Color</b>
Hex	4B3A30
RGB	75, 58, 48
RGB Percent	29%, 23%, 19%
CMY	0.7056, 0.7723, 0.8115
CMYK	0.00, 0.23, 0.36, 0.71
HSL	22°, 22%, 24%
HSV	22°, 36%, 29%
XYZ	4.9595, 4.7465, 3.4588
YIQ	61.9430, 13.3420, 0.4940

# Conversions

## Conversions Part 2

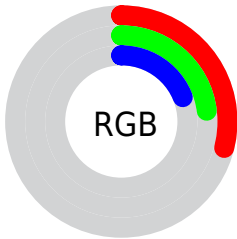
Format	Color
<a href="#">RYB</a>	<a href="#">75, 64, 48</a>
Decimal	<a href="#">4930096</a>
CIELab	<a href="#">26.00, 5.81, 9.07</a>
CIELCh	<a href="#">26, 10.771, 57.387</a>
Yxy	<a href="#">4.7465, 0.3767, 0.3605</a>
Android (android.graphics.Color)	<a href="#">4283120176 (0xFF4B3A30)</a>
YUV	<a href="#">61.9430, -6.8739, 11.4510</a>
Hunter-Lab	<a href="#">21.7865, 2.5074, 5.8377</a>

# Details

The CIELCh color **26, 10.771, 57.387** is a dark color, and the websafe version is hex **333333**. A complement of this color would be **27, 9.143, 244.560**, and the grayscale version is **26, 0.004, 296.813**.

A 20% lighter version of the original color is **46, 10.618, 57.728**, and **6, 10.804, 55.367** is the 20% darker color. If you saturate the color by 10%, you get **24, 14.203, 56.685**, and if you desaturate by 10%, it is **28, 7.538, 58.145**.

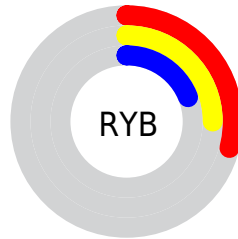
# Distribution



Red (29%)

Green (23%)

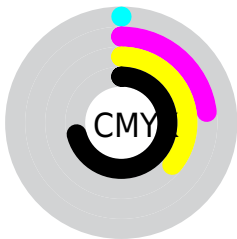
Blue (19%)



Red (29%)

Yellow (25%)

Blue (19%)

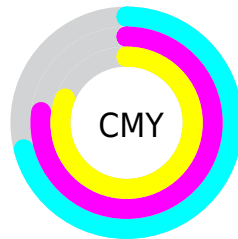


Cyan (0%)

Magenta (23%)

Yellow (36%)

Black (71%)



Cyan (71%)

Magenta (77%)

Yellow (81%)

# Brightness & Saturation Gradients

These gradients show how the CIELCh color 26, 10.771, 57.387 changes by changing the brightness by 10 percent. The first figure shows a shift by +10% for each color and the second figure -10%.

Similar to the brightness gradients but the following saturation gradients show a change of the CIELCh color 26, 10.771, 57.387 by changing the saturation by 10% instead.



■ 26, 10.771, 57.387

■ 26, 10.771, 57.387

■ 100, 10.771,  
57.387

■ 16, 10.771, 57.387

■ 46, 10.771, 57.387

■ 6, 10.771, 57.387

■ 56, 10.771, 57.387

■ 0, 10.771, 57.387

■ 66, 10.771, 57.387

■ 76, 10.771, 57.387

■ 86, 10.771, 57.387

■ 96, 10.771, 57.387

■ 26, 10.771, 57.387

■ 26, 10.771, 57.387

24, 14.203, 56.685

28, 7.538, 58.145

23, 17.835, 56.026

29, 4.496, 58.920

21, 21.648, 55.412

31, 1.630, 59.651

20, 25.587, 54.814

33, 1.074, 240.841

19, 28.992, 53.378

34, 3.633, 241.529

18, 31.819, 51.460

36, 6.063, 242.339

17, 32.953, 50.851

38, 8.377, 243.154

39, 10.589,  
243.960

41, 12.710,  
244.749

# Harmonies

# Complementary

The Complementary color scheme is a pair of colors which are on the opposite of each other on the color wheel.



26, 10.771, 57.387



27, 9.143, 244.560

# Rectangle

The Rectangle color scheme consists of four colors that form a rectangle on the color wheel.



26, 10.771, 57.387



26, 10.771, 107.387



26, 10.771, 237.387



26, 10.771, 287.387

# Sweetspot

The Sweet Spot groups the original color and five complimentary colors.



26, 10.771, 57.394



39, 3.773, 59.271



24, 16.418, 339.684



19, 2.505, 59.229



72, 0.009, 296.813



20, 0.004, 296.813



# Same Dimension

The Same Dimension uses a secret algorithm to generate beautiful new colors.



26, 10.771, 57.394



32, 16.341, 56.781



30, 14.886, 100.579



14, 1.561, 59.471



24, 44.273, 52.193



55, 84.408, 50.732





# Inverse Universe

The Inverse Universe completely reimagines the original color for something new.



27, 9.143, 244.560



33, 13.249, 246.070



22, 15.728, 288.571



14, 1.510, 241.168



26, 27.281, 264.903

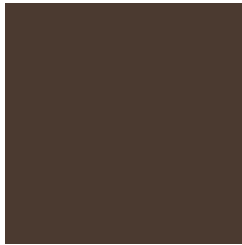


58, 51.824, 268.834



# Previews

## White Background



This preview shows how the CIE LCh color 26, 10.771, 57.387 looks on a white background.

## Color Contrast Check

Large Text (above 18pt) WCAG AA ✓ Pass

Any Text WCAG AA ✓ Pass

Large Text (above 18pt) WCAG AAA ✓ Pass

Any Text WCAG AAA ✓ Pass

# Black Background



This preview shows how the CIELCh color 26, 10.771, 57.387 looks on a black background.

## Color Contrast Check

Large Text (above 18pt) WCAG AA × Fail

Any Text WCAG AA × Fail

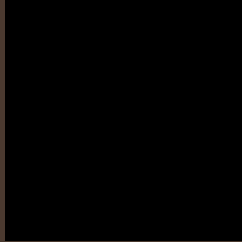
Large Text (above 18pt) WCAG AAA × Fail

Any Text WCAG AAA × Fail

If you want to check with other color combinations, try the [Color Contrast Checker](#).

**CIELCh 26, 10.771, 57.387**

## **Background**



This preview shows how black text looks on a background with the CIELCh color 26, 10.771, 57.387.



This preview shows how white text looks on a background with the CIELCh color 26, 10.771, 57.387.

# Color Blindness Simulation

Color vision deficiency is a very complex topic, and I could not describe the different causes any better than Wikipedia does, so if you want to learn more, you should check out their [article about color blindness](#).

## Dichromacy



### Original Color

26, 10.771, 57.387

### Protanopia

26, 7.933, 98.066

### Deuteranopia

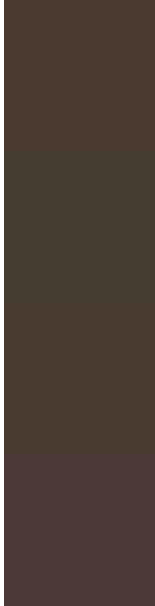
26, 9.703, 67.302



**Tritanopia**  
26, 9.803, 2.016



# Trichromacy



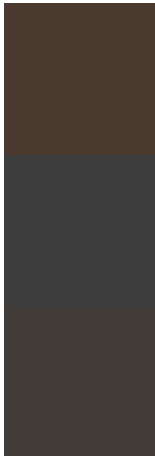
**Original Color**  
26, 10.771, 57.387

**Protanomaly**  
26, 8.757, 82.074

**Deuteranomaly**  
26, 10.053, 65.215

**Tritanomaly**  
26, 9.097, 25.129

# Monochromacy



**Original Color**  
26, 10.771, 57.387

**Achromatopsia**  
26, 0.004, 296.813

**Achromatomaly**  
26, 3.827, 62.510

# CSS Examples

## Text

The CSS property to change the color of the text to CIELCh 26, 10.771, 57.387 is called "color". The color property can be set on classes, ids or directly on the HTML element.

This example shows how text in the color `rgb(75, 58, 48)` looks like.

```
.text, #text, p{  
    color:rgb(75, 58, 48)  
}
```

If you want to add a text shadow in that color use the text-shadow property, you can generate a text shadow directly with our [CSS Text Shadow Generator](#).

Here you see how black text with a 4 pixel rgb(75, 58, 48) colored shadow looks like.

```
.shadow{ text-shadow: 4px 4px 2px rgb(75, 58, 48) }
```

## Border

The CSS property to change the border of an element to CIELCh 26, 10.771, 57.387 is called "border". The border property can be set on classes, ids or directly on the HTML element.

This example shows the color as border, it can be applied via the CSS property "border" or "border-color".

```
.border, #border, table{ border:4px solid rgb(75, 58, 48) }
```

If only the border color should be changed use the property border-color.

```
.border{ border-color:rgb(75, 58, 48) }
```

If you want to add a box shadow in that color use:

Here you see how a box with a 4 pixel rgb(75, 58, 48) colored shadow looks like.

```
.boxshadow{ -moz-box-shadow:4px 4px 4px  
4px rgb(75, 58, 48); -webkit-box-  
shadow:4px 4px 4px 4px rgb(75, 58, 48);  
box-shadow:4px 4px 4px 4px rgb(75, 58, 48)  
}
```

# Background

The CSS property to change the background color of an element to CIELCh 26, 10.771, 57.387 is called "background". The background property can be set on classes, ids or directly on the HTML element.

```
.background, #background, body{  
background: rgb(75, 58, 48) }
```

If only the background color should be changed can be used:

```
.background{ background-color: rgb(75, 58,  
48) }
```

This example shows the color as background, it is applied via the CSS property "background".

To optimize and compress your CSS code, you can use our [online CSS compressor and optimizer](#) based on csstidy. If you want to create a linear or radial gradient as background or border, check our [CSS Gradient Generator](#).

Hey! You found this booklet interesting? Support Converting Colors with the new Membership Option!

The pro membership hides all ads, plus gives you double the colors in the color bucket, and more awesome pro features!

**[Learn more, Memberships starting at \\$2.50/m!](#)**

**Follow me  
on Twitter!**

@ConvertingColor