

Converting Colors

CIELCh(26, 20.444, 73.794)

Have a look what the booklet for
CIELCh(26, 20.444, 73.794) contains.

CIELCh(26, 20.444, 73.794)	3
<i>Conversions</i>	4
<i>Details</i>	6
<i>Harmonies</i>	11
<i>Previews</i>	20
<i>Color Blindness Simulation</i>	23
<i>CSS Examples</i>	26

Color

CIELCh(26, 20.444, 73.794)

Conversions

Conversions Part 1	
Format	Color
Hex	4F3A20
RGB	79, 58, 32
RGB Percent	31%, 23%, 13%
CMY	0.6915, 0.7737, 0.8756
CMYK	0.00, 0.27, 0.60, 0.69
HSL	33°, 43%, 22%
HSV	33°, 60%, 31%
XYZ	4.9516, 4.7465, 2.0014
YIQ	61.3150, 20.8620, -3.6340

Conversions

Conversions Part 2

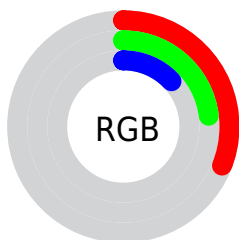
Format	Color
RYB	70, 79, 32
Decimal	5192224
CIELab	26.00, 5.71, 19.63
CIELCh	26, 20.444, 73.794
Yxy	4.7465, 0.4232, 0.4057
Android (android.graphics.Color)	4283382304 (0xFF4F3A20)
YUV	61.3150, -14.4523, 15.5097
Hunter-Lab	21.7865, 2.4426, 9.8039

Details

The CIELCh color **26, 20.444, 73.794** is a dark color, and the websafe version is hex **333300**. A complement of this color would be **22, 18.463, 271.690**, and the grayscale version is **26, 0.004, 296.813**.

A 20% lighter version of the original color is **46, 20.355, 73.378**, and **6, 11.383, 56.606** is the 20% darker color. If you saturate the color by 10%, you get **25, 24.131, 72.484**, and if you desaturate by 10%, it is **27, 16.775, 75.062**.

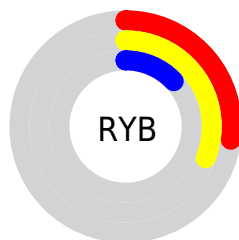
Distribution



Red (31%)

Green (23%)

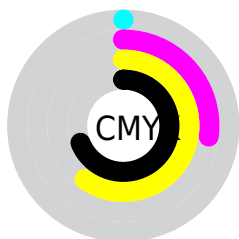
Blue (13%)



Red (27%)

Yellow (31%)

Blue (13%)

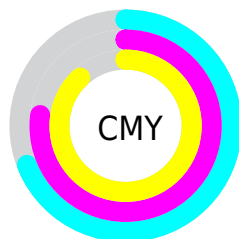


Cyan (0%)

Magenta (27%)

Yellow (60%)

Black (69%)



Cyan (69%)

Magenta (77%)

Yellow (88%)


Brightness & Saturation Gradients

These gradients show how the CIELCh color 26, 20.444, 73.794 changes by changing the brightness by 10 percent. The first figure shows a shift by +10% for each color and the second figure -10%.

Similar to the brightness gradients but the following saturation gradients show a change of the CIELCh color 26, 20.444, 73.794 by changing the saturation by 10% instead.

 26, 20.444, 73.794

 26, 20.444, 73.794

 100, 20.444,
73.794

 16, 20.444, 73.794

 46, 20.444, 73.794

 6, 20.444, 73.794

 56, 20.444, 73.794

 0, 20.444, 73.794

 66, 20.444, 73.794

 76, 20.444, 73.794

 86, 20.444, 73.794

 96, 20.444, 73.794

 26, 20.444, 73.794

 26, 20.444, 73.794

 25, 24.131, 72.484

 27, 16.775, 75.062

 24, 27.723, 71.070

 28, 13.183, 76.295

 23, 30.752, 69.282

 30, 9.694, 77.503

 22, 33.428, 67.496

 31, 6.318, 78.685

 22, 33.513, 67.445

 32, 3.054, 79.822

 34, 0.102, 262.650

 35, 3.158, 262.168

 36, 6.124, 263.208

 38, 9.006, 264.227

Harmonies

Complementary

The Complementary color scheme is a pair of colors which are on the opposite of each other on the color wheel.



26, 20.444, 73.794



22, 18.463, 271.690

Rectangle

The Rectangle color scheme consists of four colors that form a rectangle on the color wheel.



26, 20.444, 73.794



26, 20.444, 123.794



26, 20.444, 253.794



26, 20.444, 303.794

Sweetspot

The Sweet Spot groups the original color and five complimentary colors.



26, 20.444, 73.798



40, 7.149, 78.806



20, 24.977, 352.891



19, 4.919, 78.610



73, 0.009, 296.813



21, 0.004, 296.813

Same Dimension

The Same Dimension uses a secret algorithm to generate beautiful new colors.



26, 20.444, 73.798



32, 31.011, 71.808



32, 28.288, 107.494



15, 1.716, 79.937



29, 42.154, 67.184



63, 77.396, 64.619

Inverse Universe

The Inverse Universe completely reimagines the original color for something new.



22, 18.463, 271.690



26, 27.571, 276.109



15, 32.958, 299.474



14, 1.698, 262.063



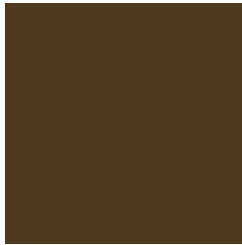
20, 38.611, 286.290



46, 75.136, 289.505

Previews

White Background



This preview shows how the CIE LCh color 26, 20.444, 73.794 looks on a white background.

Color Contrast Check

Large Text (above 18pt) WCAG AA ✓ Pass

Any Text WCAG AA ✓ Pass

Large Text (above 18pt) WCAG AAA ✓ Pass

Any Text WCAG AAA ✓ Pass

Black Background



This preview shows how the CIELCh color 26, 20.444, 73.794 looks on a black background.

Color Contrast Check

Large Text (above 18pt) WCAG AA × Fail

Any Text WCAG AA × Fail

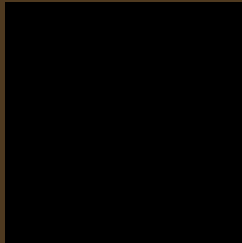
Large Text (above 18pt) WCAG AAA × Fail

Any Text WCAG AAA × Fail

If you want to check with other color combinations, try the [Color Contrast Checker](#).

CIELCh 26, 20.444, 73.794

Background



This preview shows how black text looks on a background with the CIELCh color 26, 20.444, 73.794.

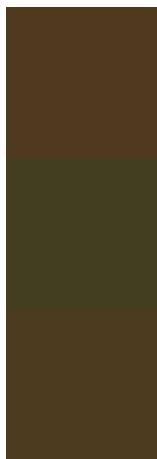


This preview shows how white text looks on a background with the CIELCh color 26, 20.444, 73.794.

Color Blindness Simulation

Color vision deficiency is a very complex topic, and I could not describe the different causes any better than Wikipedia does, so if you want to learn more, you should check out their [article about color blindness](#).

Dichromacy



Original Color

26, 20.444, 73.794

Protanopia

26, 18.837, 96.819

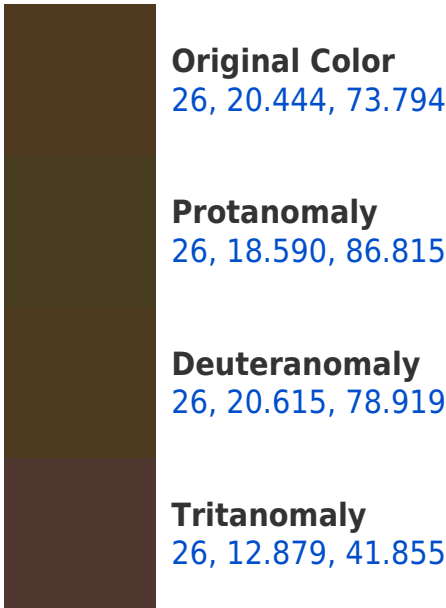
Deuteranopia

26, 20.352, 80.208

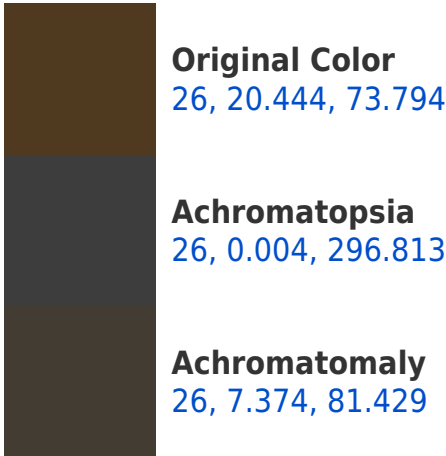


Tritanopia
26, 12.475, 9.978

Trichromacy



Monochromacy



CSS Examples

Text

The CSS property to change the color of the text to CIELCh 26, 20.444, 73.794 is called "color". The color property can be set on classes, ids or directly on the HTML element.

This example shows how text in the color `rgb(79, 58, 32)` looks like.

```
.text, #text, p{  
    color:rgb(79, 58, 32)  
}
```

If you want to add a text shadow in that color use the text-shadow property, you can generate a text shadow directly with our [CSS Text Shadow Generator](#).

Here you see how black text with a 4 pixel rgb(79, 58, 32) colored shadow looks like.

```
.shadow{ text-shadow: 4px 4px 2px rgb(79, 58, 32) }
```

Border

The CSS property to change the border of an element to CIELCh 26, 20.444, 73.794 is called "border". The border property can be set on classes, ids or directly on the HTML element.

This example shows the color as border, it can be applied via the CSS property "border" or "border-color".

```
.border, #border, table{ border:4px solid rgb(79, 58, 32) }
```

If only the border color should be changed use the property border-color.

```
.border{ border-color:rgb(79, 58, 32) }
```

If you want to add a box shadow in that color use:

Here you see how a box with a 4 pixel rgb(79, 58, 32) colored shadow looks like.

```
.boxshadow{ -moz-box-shadow:4px 4px 4px  
4px rgb(79, 58, 32); -webkit-box-  
shadow:4px 4px 4px 4px rgb(79, 58, 32);  
box-shadow:4px 4px 4px 4px rgb(79, 58, 32)  
}
```

Background

The CSS property to change the background color of an element to CIELCh 26, 20.444, 73.794 is called "background". The background property can be set on classes, ids or directly on the HTML element.

```
.background, #background, body{  
background: rgb(79, 58, 32) }
```

If only the background color should be changed can be used:

```
.background{ background-color: rgb(79, 58,  
32) }
```

This example shows the color as background, it is applied via the CSS property "background".

To optimize and compress your CSS code, you can use our [online CSS compressor and optimizer](#) based on csstidy. If you want to create a linear or radial gradient as background or border, check our [CSS Gradient Generator](#).

Hey! You found this booklet
interesting? Support Converting
Colors with the new Membership
Option!

The pro membership hides all ads, plus gives you
double the colors in the color bucket, and more
awesome pro features!

[Learn more, Memberships starting at \\$2.50/m!](#)

**Follow me
on Twitter!**

@ConvertingColor