

Converting Colors

CIELCh(27, 13.682, 22.006)

Have a look what the booklet for
CIELCh(27, 13.682, 22.006) contains.

CIELCh(27, 13.953, 22.061)	3
<i>Conversions</i>	4
<i>Details</i>	6
<i>Harmonies</i>	11
<i>Previews</i>	20
<i>Color Blindness Simulation</i>	23
<i>CSS Examples</i>	26

Color

CIELCh(27, 13.953, 22.061)

Conversions

Conversions Part 1

Format	Color
Hex	553838
RGB	85, 56, 56
RGB Percent	33%, 22%, 22%
CMY	0.6654, 0.7792, 0.7792
CMYK	0.00, 0.34, 0.34, 0.67
HSL	0°, 20%, 28%
HSV	0°, 34%, 33%
XYZ	5.9271, 5.0937, 4.4512
YIQ	64.6710, 17.2840, 6.1480

Conversions

Conversions Part 2

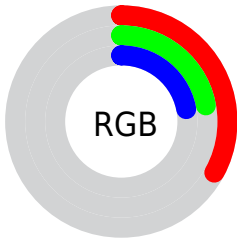
Format	Color
RYB	85, 56, 56
Decimal	5584952
CIELab	27.00, 12.93, 5.24
CIELCh	27, 13.953, 22.061
Yxy	5.0937, 0.3831, 0.3292
Android (android.graphics.Color)	4283775032 (0xFF553838)
YUV	64.6710, -4.2748, 17.8285
Hunter-Lab	22.5692, 7.3813, 4.1050

Details

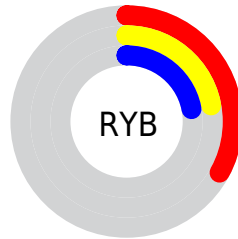
The CIELCh color **27, 13.953, 22.061** is a dark color, and the websafe version is hex **663333**. A complement of this color would be **34, 11.266, 197.894**, and the grayscale version is **28, 0.004, 296.813**.

A 20% lighter version of the original color is **47, 14.190, 21.173**, and **7, 13.860, 22.397** is the 20% darker color. If you saturate the color by 10%, you get **24, 18.644, 23.371**, and if you desaturate by 10%, it is **30, 9.515, 21.040**.

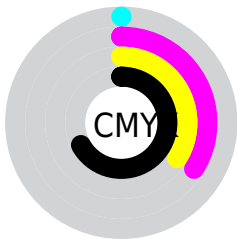
Distribution



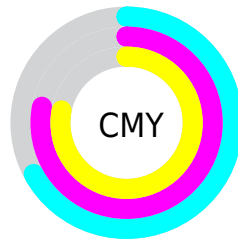
- Red (33%)
- Green (22%)
- Blue (22%)



- Red (33%)
- Yellow (22%)
- Blue (22%)



- Cyan (0%)
- Magenta (34%)
- Yellow (34%)
- Black (67%)



- Cyan (67%)
- Magenta (78%)
- Yellow (78%)

Brightness & Saturation Gradients

These gradients show how the CIELCh color 27, 13.953, 22.061 changes by changing the brightness by 10 percent. The first figure shows a shift by +10% for each color and the second figure -10%.

Similar to the brightness gradients but the following saturation gradients show a change of the CIELCh color 27, 13.953, 22.061 by changing the saturation by 10% instead.

■ 27, 13.953, 22.061

■ 27, 13.953, 22.061

■ 100, 13.953,
22.061

■ 17, 13.953, 22.061

■ 47, 13.953, 22.061

■ 7, 13.953, 22.061

■ 57, 13.953, 22.061

■ 0, 13.953, 22.061

■ 67, 13.953, 22.061

■ 77, 13.953, 22.061

■ 87, 13.953, 22.061

■ 97, 13.953, 22.061

■ 27, 13.953, 22.061

■ 27, 13.953, 22.061

■ 24, 18.644, 23.371

■ 30, 9.515, 21.040

■ 22, 23.537, 25.039

■ 32, 5.358, 20.218

■ 20, 28.539, 27.153

■ 35, 1.482, 19.441

■ 18, 33.520, 29.775

■ 38, 2.125, 199.281

■ 17, 37.938, 32.002

■ 41, 5.484, 198.790

■ 16, 41.229, 32.947

■ 44, 8.617, 198.442

■ 15, 43.183, 33.274

■ 47, 11.548,
198.164

■ 49, 14.301,
197.936

■ 52, 16.894,
197.748

Harmonies

Complementary

The Complementary color scheme is a pair of colors which are on the opposite of each other on the color wheel.



27, 13.953, 22.061



34, 11.266, 197.894

Rectangle

The Rectangle color scheme consists of four colors that form a rectangle on the color wheel.



27, 13.953, 22.061



27, 13.953, 72.061



27, 13.953, 202.061



27, 13.953, 252.061

Sweetspot

The Sweet Spot groups the original color and five complimentary colors.



27, 13.952, 22.066



44, 4.727, 19.949



28, 22.171, 326.124



21, 3.200, 20.009



75, 0.009, 296.813



24, 0.004, 296.813

Same Dimension

The Same Dimension uses a secret algorithm to generate beautiful new colors.



27, 13.952, 22.066



34, 21.659, 23.142



31, 11.638, 71.546



16, 2.126, 19.836



21, 52.679, 36.577



49, 98.180, 40.002

Inverse Universe

The Inverse Universe completely reimagines the original color for something new.



34, 11.266, 197.894



44, 16.463, 197.579



29, 10.674, 260.363



17, 2.022, 199.077



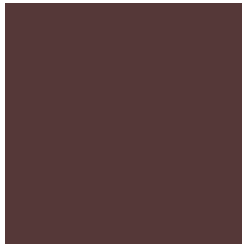
41, 26.461, 196.414



85, 47.038, 196.416

Previews

White Background



This preview shows how the CIE LCh color 27, 13.953, 22.061 looks on a white background.

Color Contrast Check

Large Text (above 18pt) WCAG AA ✓ Pass

Any Text WCAG AA ✓ Pass

Large Text (above 18pt) WCAG AAA ✓ Pass

Any Text WCAG AAA ✓ Pass

Black Background



This preview shows how the CIE LCh color 27, 13.953, 22.061 looks on a black background.

Color Contrast Check

Large Text (above 18pt) WCAG AA × Fail

Any Text WCAG AA × Fail

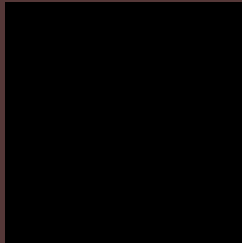
Large Text (above 18pt) WCAG AAA × Fail

Any Text WCAG AAA × Fail

If you want to check with other color combinations, try the [Color Contrast Checker](#).

CIELCh 27, 13.953, 22.061

Background



This preview shows how black text looks on a background with the CIELCh color 27, 13.953, 22.061.

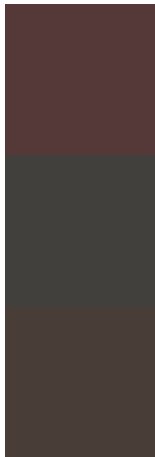


This preview shows how white text looks on a background with the CIELCh color 27, 13.953, 22.061.

Color Blindness Simulation

Color vision deficiency is a very complex topic, and I could not describe the different causes any better than Wikipedia does, so if you want to learn more, you should check out their [article about color blindness](#).

Dichromacy



Original Color

27, 13.953, 22.061

Protanopia

27, 2.743, 90.098

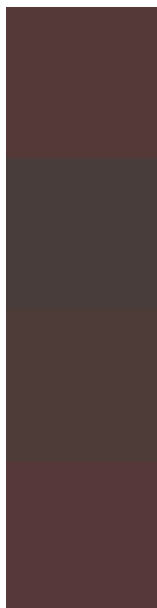
Deuteranopia

27, 6.974, 60.374



Tritanopia
27, 14.320, 11.960

Trichromacy



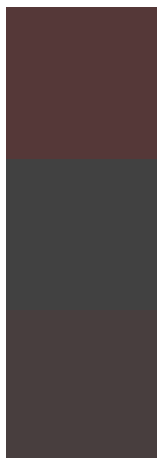
Original Color
27, 13.953, 22.061

Protanomaly
27, 5.774, 33.238

Deuteranomaly
27, 8.842, 42.029

Tritanomaly
27, 14.305, 14.520

Monochromacy



Original Color
27, 13.953, 22.061

Achromatopsia
28, 0.004, 296.813

Achromatomaly
27, 4.602, 20.166

CSS Examples

Text

The CSS property to change the color of the text to CIELCh 27, 13.953, 22.061 is called "color". The color property can be set on classes, ids or directly on the HTML element.

This example shows how text in the color `rgb(85, 56, 56)` looks like.

```
.text, #text, p{  
    color:rgb(85, 56, 56)  
}
```

If you want to add a text shadow in that color use the text-shadow property, you can generate a text shadow directly with our [CSS Text Shadow Generator](#).

Here you see how black text with a 4 pixel rgb(85, 56, 56) colored shadow looks like.

```
.shadow{ text-shadow: 4px 4px 2px rgb(85, 56, 56) }
```

Border

The CSS property to change the border of an element to CIELCh 27, 13.953, 22.061 is called "border". The border property can be set on classes, ids or directly on the HTML element.

This example shows the color as border, it can be applied via the CSS property "border" or "border-color".

```
.border, #border, table{ border:4px solid rgb(85, 56, 56) }
```

If only the border color should be changed use the property border-color.

```
.border{ border-color:rgb(85, 56, 56) }
```

If you want to add a box shadow in that color use:

Here you see how a box with a 4 pixel rgb(85, 56, 56) colored shadow looks like.

```
.boxshadow{ -moz-box-shadow:4px 4px 4px  
4px rgb(85, 56, 56); -webkit-box-  
shadow:4px 4px 4px 4px rgb(85, 56, 56);  
box-shadow:4px 4px 4px 4px rgb(85, 56, 56)  
}
```

Background

The CSS property to change the background color of an element to CIELCh 27, 13.953, 22.061 is called "background". The background property can be set on classes, ids or directly on the HTML element.

```
.background, #background, body{  
background: rgb(85, 56, 56) }
```

If only the background color should be changed can be used:

```
.background{ background-color: rgb(85, 56,  
56) }
```

This example shows the color as background, it is applied via the CSS property "background".

To optimize and compress your CSS code, you can use our [online CSS compressor and optimizer](#) based on csstidy. If you want to create a linear or radial gradient as background or border, check our [CSS Gradient Generator](#).

Hey! You found this booklet interesting? Support Converting Colors with the new Membership Option!

The pro membership hides all ads, plus gives you double the colors in the color bucket, and more awesome pro features!

[Learn more, Memberships starting at \\$2.50/m!](#)

**Follow me
on Twitter!**

@ConvertingColor