

Converting Colors

CIELCh(27, 14.590, 76.214)

Have a look what the booklet for
CIELCh(27, 14.590, 76.214) contains.

CIELCh(27, 14.599, 76.223)	3
<i>Conversions</i>	4
<i>Details</i>	6
<i>Harmonies</i>	11
<i>Previews</i>	20
<i>Color Blindness Simulation</i>	23
<i>CSS Examples</i>	26

Color

CIELCh(27, 14.599, 76.223)

Conversions

Conversions Part 1

Format	Color
Hex	4C3D2A
RGB	76, 61, 42
RGB Percent	30%, 24%, 16%
CMY	0.7006, 0.7595, 0.8340
CMYK	0.00, 0.20, 0.45, 0.70
HSL	34°, 29%, 23%
HSV	34°, 45%, 30%
XYZ	5.1190, 5.0937, 2.9338
YIQ	63.3190, 15.0390, -2.7290

Conversions

Conversions Part 2

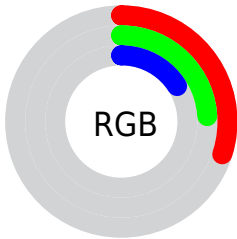
Format	Color
R_{YB}	69, 76, 42
Decimal	4996394
CIE _{Lab}	27.00, 3.48, 14.18
CIE _{LCh}	27, 14.599, 76.223
Yxy	5.0937, 0.3894, 0.3875
Android (android.graphics.Color)	4283186474 (0xFF4C3D2A)
YUV	63.3190, -10.5103, 11.1212
Hunter-Lab	22.5692, 0.9900, 8.0912

Details

The CIELCh color **27, 14.599, 76.223** is a dark color, and the websafe version is hex **333333**. A complement of this color would be **24, 13.575, 268.511**, and the grayscale version is **27, 0.004, 296.813**.

A 20% lighter version of the original color is **47, 14.346, 74.529**, and **7, 11.209, 69.909** is the 20% darker color. If you saturate the color by 10%, you get **26, 18.144, 74.982**, and if you desaturate by 10%, it is **28, 11.141, 77.448**.

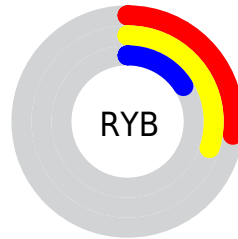
Distribution



Red (30%)

Green (24%)

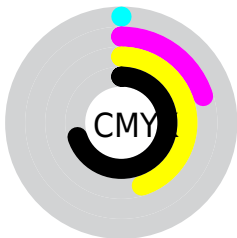
Blue (16%)



Red (27%)

Yellow (30%)

Blue (16%)

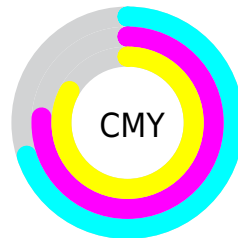


Cyan (0%)

Magenta (20%)

Yellow (45%)

Black (70%)



Cyan (70%)

Magenta (76%)

Yellow (83%)

Brightness & Saturation Gradients

These gradients show how the CIELCh color 27, 14.599, 76.223 changes by changing the brightness by 10 percent. The first figure shows a shift by +10% for each color and the second figure -10%.

Similar to the brightness gradients but the following saturation gradients show a change of the CIELCh color 27, 14.599, 76.223 by changing the saturation by 10% instead.

■ 27, 14.599, 76.223

■ 27, 14.599, 76.223

■ 100, 14.599,
76.223

■ 17, 14.599, 76.223

■ 47, 14.599, 76.223

■ 7, 14.599, 76.223

■ 57, 14.599, 76.223

■ 0, 14.599, 76.223

■ 67, 14.599, 76.223

■ 77, 14.599, 76.223

■ 87, 14.599, 76.223

■ 97, 14.599, 76.223

■ 27, 14.599, 76.223

■ 27, 14.599, 76.223

■ 26, 18.144, 74.982

■ 28, 11.141, 77.448

■ 25, 21.739, 73.698

■ 29, 7.787, 78.641

■ 24, 25.303, 72.344

■ 31, 4.541, 79.802

■ 23, 28.604, 70.796

■ 32, 1.400, 80.870

■ 22, 31.188, 68.864

■ 33, 1.642, 262.199

■ 21, 32.578, 67.936

■ 34, 4.593, 263.216

■ 36, 7.461, 264.245

■ 37, 10.254,
265.242

■ 38, 12.978,
266.200

Harmonies

Complementary

The Complementary color scheme is a pair of colors which are on the opposite of each other on the color wheel.



27, 14.599, 76.223



24, 13.575, 268.511

Rectangle

The Rectangle color scheme consists of four colors that form a rectangle on the color wheel.



27, 14.599, 76.223



27, 14.599, 126.223



27, 14.599, 256.223



27, 14.599, 306.223

Sweetspot

The Sweet Spot groups the original color and five complimentary colors.



27, 14.599, 76.229



40, 5.031, 79.926



22, 18.446, 350.698



20, 3.558, 79.770



73, 0.009, 296.813



21, 0.004, 296.813

Same Dimension

The Same Dimension uses a secret algorithm to generate beautiful new colors.



27, 14.599, 76.229



34, 21.941, 74.931



32, 21.065, 108.601



15, 1.724, 80.459



29, 42.131, 67.654



64, 77.274, 65.092

Inverse Universe

The Inverse Universe completely reimagines the original color for something new.



24, 13.575, 268.511



29, 20.061, 270.920



19, 23.360, 297.038



14, 1.706, 262.586



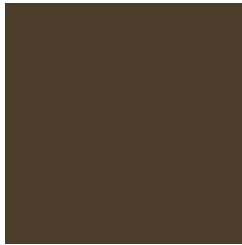
19, 38.991, 286.740



46, 75.896, 289.929

Previews

White Background



This preview shows how the CIELCh color 27, 14.599, 76.223 looks on a white background.

Color Contrast Check

Large Text (above 18pt) WCAG AA ✓ Pass

Any Text WCAG AA ✓ Pass

Large Text (above 18pt) WCAG AAA ✓ Pass

Any Text WCAG AAA ✓ Pass

Black Background



This preview shows how the CIELCh color 27, 14.599, 76.223 looks on a black background.

Color Contrast Check

Large Text (above 18pt) WCAG AA × Fail

Any Text WCAG AA × Fail

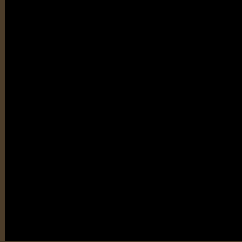
Large Text (above 18pt) WCAG AAA × Fail

Any Text WCAG AAA × Fail

If you want to check with other color combinations, try the [Color Contrast Checker](#).

CIELCh 27, 14.599, 76.223

Background



This preview shows how black text looks on a background with the CIELCh color 27, 14.599, 76.223.

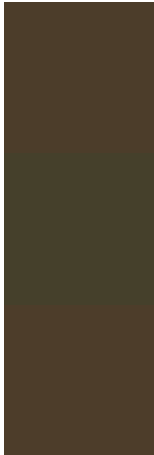


This preview shows how white text looks on a background with the CIELCh color 27, 14.599, 76.223.

Color Blindness Simulation

Color vision deficiency is a very complex topic, and I could not describe the different causes any better than Wikipedia does, so if you want to learn more, you should check out their [article about color blindness](#).

Dichromacy



Original Color

27, 14.599, 76.223

Protanopia

27, 13.746, 96.973

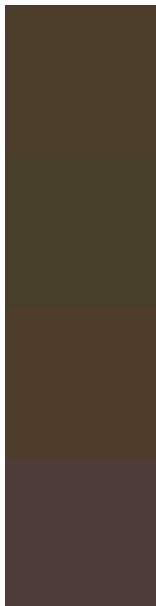
Deuteranopia

27, 14.890, 74.577



Tritanopia
27, 9.126, 4.721

Trichromacy



Original Color
27, 14.599, 76.223

Protanomaly
27, 13.711, 88.308

Deuteranomaly
27, 14.890, 74.577

Tritanomaly
27, 8.842, 42.029

Monochromacy



Original Color
27, 14.599, 76.223

Achromatopsia
27, 0.004, 296.813

Achromatomaly
27, 5.114, 81.855

CSS Examples

Text

The CSS property to change the color of the text to CIELCh 27, 14.599, 76.223 is called "color". The color property can be set on classes, ids or directly on the HTML element.

This example shows how text in the color `rgb(76, 61, 42)` looks like.

```
.text, #text, p{  
    color:rgb(76, 61, 42)  
}
```

If you want to add a text shadow in that color use the text-shadow property, you can generate a text shadow directly with our [CSS Text Shadow Generator](#).

Here you see how black text with a 4 pixel rgb(76, 61, 42) colored shadow looks like.

```
.shadow{ text-shadow: 4px 4px 2px rgb(76, 61, 42) }
```

Border

The CSS property to change the border of an element to CIELCh 27, 14.599, 76.223 is called "border". The border property can be set on classes, ids or directly on the HTML element.

This example shows the color as border, it can be applied via the CSS property "border" or "border-color".

```
.border, #border, table{ border:4px solid rgb(76, 61, 42) }
```

If only the border color should be changed use the property border-color.

```
.border{ border-color:rgb(76, 61, 42) }
```

If you want to add a box shadow in that color use:

Here you see how a box with a 4 pixel rgb(76, 61, 42) colored shadow looks like.

```
.boxshadow{ -moz-box-shadow:4px 4px 4px  
4px rgb(76, 61, 42); -webkit-box-  
shadow:4px 4px 4px 4px rgb(76, 61, 42);  
box-shadow:4px 4px 4px 4px rgb(76, 61, 42)  
}
```

Background

The CSS property to change the background color of an element to CIELCh 27, 14.599, 76.223 is called "background". The background property can be set on classes, ids or directly on the HTML element.

```
.background, #background, body{  
background: rgb(76, 61, 42) }
```

If only the background color should be changed can be used:

```
.background{ background-color: rgb(76, 61,  
42) }
```

This example shows the color as background, it is applied via the CSS property "background".

To optimize and compress your CSS code, you can use our [online CSS compressor and optimizer](#) based on csstidy. If you want to create a linear or radial gradient as background or border, check our [CSS Gradient Generator](#).

Hey! You found this booklet interesting? Support Converting Colors with the new Membership Option!

The pro membership hides all ads, plus gives you double the colors in the color bucket, and more awesome pro features!

[Learn more, Memberships starting at \\$2.50/m!](#)

**Follow me
on Twitter!**

@ConvertingColor