

Converting Colors

CIELCh(28, 11.269, 71.110)

Have a look what the booklet for
CIELCh(28, 11.269, 71.110) contains.

CIELCh(28, 11.434, 71.384)	3
<i>Conversions</i>	4
<i>Details</i>	6
<i>Harmonies</i>	11
<i>Previews</i>	20
<i>Color Blindness Simulation</i>	23
<i>CSS Examples</i>	26

Color

CIELCh(28, 11.434, 71.384)

Conversions

Conversions Part 1

Format	Color
Hex	4E4032
RGB	78, 64, 50
RGB Percent	31%, 25%, 20%
CMY	0.6956, 0.7504, 0.8053
CMYK	0.00, 0.18, 0.36, 0.70
HSL	30°, 22%, 25%
HSV	30°, 36%, 30%
XYZ	5.4924, 5.4574, 3.7423
YIQ	66.5900, 12.8380, -1.3860

Conversions

Conversions Part 2

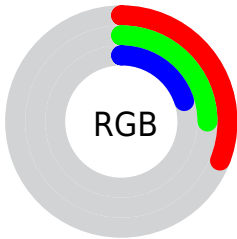
Format	Color
RYB	78, 78, 50
Decimal	5128242
CIELab	28.00, 3.65, 10.84
CIELCh	28, 11.434, 71.384
Yxy	5.4574, 0.3738, 0.3715
Android (android.graphics.Color)	4283318322 (0xFF4E4032)
YUV	66.5900, -8.1789, 10.0066
Hunter-Lab	23.3610, 1.0849, 6.8548

Details

The CIELCh color **28, 11.434, 71.384** is a dark color, and the websafe version is hex **333333**. A complement of this color would be **26, 10.443, 260.670**, and the grayscale version is **28, 0.004, 296.813**.

A 20% lighter version of the original color is **48, 11.743, 72.438**, and **8, 11.459, 72.063** is the 20% darker color. If you saturate the color by 10%, you get **27, 14.921, 70.249**, and if you desaturate by 10%, it is **29, 8.085, 72.522**.

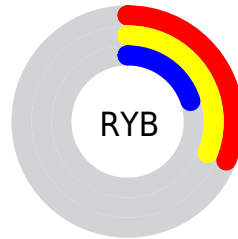
Distribution



Red (31%)

Green (25%)

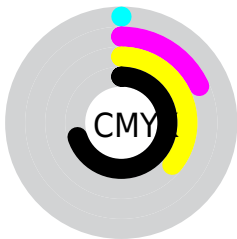
Blue (20%)



Red (31%)

Yellow (31%)

Blue (20%)

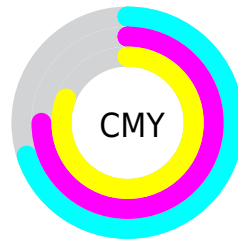


Cyan (0%)

Magenta (18%)

Yellow (36%)

Black (70%)



Cyan (70%)

Magenta (75%)

Yellow (81%)

Brightness & Saturation Gradients

These gradients show how the CIELCh color 28, 11.434, 71.384 changes by changing the brightness by 10 percent. The first figure shows a shift by +10% for each color and the second figure -10%.

Similar to the brightness gradients but the following saturation gradients show a change of the CIELCh color 28, 11.434, 71.384 by changing the saturation by 10% instead.

■ 28, 11.434, 71.384

■ 28, 11.434, 71.384

■ 100, 11.434,
71.384

■ 18, 11.434, 71.384

■ 48, 11.434, 71.384

■ 8, 11.434, 71.384

■ 58, 11.434, 71.384

■ 0, 11.434, 71.384

■ 68, 11.434, 71.384

■ 78, 11.434, 71.384

■ 88, 11.434, 71.384

■ 98, 11.434, 71.384

■ 28, 11.434, 71.384

■ 28, 11.434, 71.384

■ 27, 14.921, 70.249

■ 29, 8.085, 72.522

■ 25, 18.534, 69.095

■ 31, 4.874, 73.633

■ 24, 22.238, 67.917

■ 32, 1.795, 74.677

■ 23, 25.957, 66.676

■ 34, 1.163, 256.030

■ 22, 29.329, 65.103

■ 35, 4.011, 256.979

■ 21, 32.029, 63.111

■ 36, 6.758, 257.991

■ 20, 33.102, 62.425

■ 38, 9.415, 258.982

■ 39, 11.992,
259.939

■ 41, 14.497,
260.861

Harmonies

Complementary

The Complementary color scheme is a pair of colors which are on the opposite of each other on the color wheel.



28, 11.434, 71.384



26, 10.443, 260.670

Rectangle

The Rectangle color scheme consists of four colors that form a rectangle on the color wheel.



28, 11.434, 71.384



28, 11.434, 121.384



28, 11.434, 251.384



28, 11.434, 301.384

Sweetspot

The Sweet Spot groups the original color and five complimentary colors.



28, 11.434, 71.391



41, 4.151, 74.132



24, 15.544, 346.729



20, 2.758, 74.065



73, 0.009, 296.813



21, 0.004, 296.813

Same Dimension

The Same Dimension uses a secret algorithm to generate beautiful new colors.



28, 11.434, 71.391



36, 17.420, 70.410



32, 17.376, 107.038



14, 1.650, 74.422



27, 42.518, 62.517



61, 78.938, 60.037

Inverse Universe

The Inverse Universe completely reimagines the original color for something new.



26, 10.443, 260.670



33, 15.528, 262.410



22, 18.828, 294.274



14, 1.622, 256.511



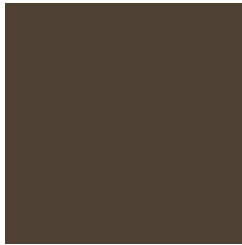
21, 34.904, 281.299



49, 67.652, 284.767

Previews

White Background



This preview shows how the CIELCh color 28, 11.434, 71.384 looks on a white background.

Color Contrast Check

Large Text (above 18pt) WCAG AA ✓ Pass

Any Text WCAG AA ✓ Pass

Large Text (above 18pt) WCAG AAA ✓ Pass

Any Text WCAG AAA ✓ Pass

Black Background



This preview shows how the CIELCh color 28, 11.434, 71.384 looks on a black background.

Color Contrast Check

Large Text (above 18pt) WCAG AA × Fail

Any Text WCAG AA × Fail

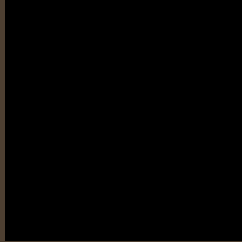
Large Text (above 18pt) WCAG AAA × Fail

Any Text WCAG AAA × Fail

If you want to check with other color combinations, try the [Color Contrast Checker](#).

CIELCh 28, 11.434, 71.384

Background



This preview shows how black text looks on a background with the CIELCh color 28, 11.434, 71.384.

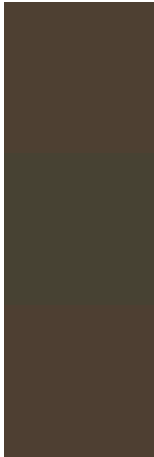


This preview shows how white text looks on a background with the CIELCh color 28, 11.434, 71.384.

Color Blindness Simulation

Color vision deficiency is a very complex topic, and I could not describe the different causes any better than Wikipedia does, so if you want to learn more, you should check out their [article about color blindness](#).

Dichromacy



Original Color


28, 11.434, 71.384

Protanopia

28, 9.944, 94.194

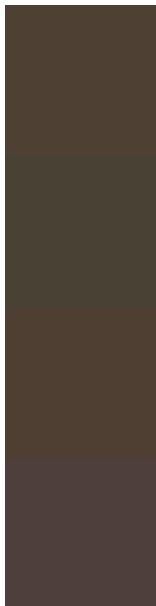
Deuteranopia

28, 11.274, 67.627



Tritanopia
28, 8.804, 359.628

Trichromacy



Original Color
28, 11.434, 71.384

Protanomaly
28, 9.842, 85.131

Deuteranomaly
28, 11.274, 67.627

Tritanomaly
28, 7.643, 30.310

Monochromacy



Original Color
28, 11.434, 71.384

Achromatopsia
28, 0.004, 296.813

Achromatomaly
28, 3.968, 73.829

CSS Examples

Text

The CSS property to change the color of the text to CIELCh 28, 11.434, 71.384 is called "color". The color property can be set on classes, ids or directly on the HTML element.

This example shows how text in the color `rgb(78, 64, 50)` looks like.

```
.text, #text, p{  
    color:rgb(78, 64, 50)  
}
```

If you want to add a text shadow in that color use the text-shadow property, you can generate a text shadow directly with our [CSS Text Shadow Generator](#).

Here you see how black text with a 4 pixel rgb(78, 64, 50) colored shadow looks like.

```
.shadow{ text-shadow: 4px 4px 2px rgb(78, 64, 50) }
```

Border

The CSS property to change the border of an element to CIELCh 28, 11.434, 71.384 is called "border". The border property can be set on classes, ids or directly on the HTML element.

This example shows the color as border, it can be applied via the CSS property "border" or "border-color".

```
.border, #border, table{ border:4px solid rgb(78, 64, 50) }
```

If only the border color should be changed use the property `border-color`.

```
.border{ border-color:rgb(78, 64, 50) }
```

If you want to add a box shadow in that color use:

Here you see how a box with a 4 pixel `rgb(78, 64, 50)` colored shadow looks like.

```
.boxshadow{ -moz-box-shadow:4px 4px 4px  
4px rgb(78, 64, 50); -webkit-box-  
shadow:4px 4px 4px 4px rgb(78, 64, 50);  
box-shadow:4px 4px 4px 4px rgb(78, 64, 50)  
}
```

Background

The CSS property to change the background color of an element to CIELCh 28, 11.434, 71.384 is called "background". The background property can be set on classes, ids or directly on the HTML element.

```
.background, #background, body{  
background: rgb(78, 64, 50) }
```

If only the background color should be changed can be used:

```
.background{ background-color: rgb(78, 64,  
50) }
```

This example shows the color as background, it is applied via the CSS property "background".

To optimize and compress your CSS code, you can use our [online CSS compressor and optimizer](#) based on csstidy. If you want to create a linear or radial gradient as background or border, check our [CSS Gradient Generator](#).

Hey! You found this booklet interesting? Support Converting Colors with the new Membership Option!

The pro membership hides all ads, plus gives you double the colors in the color bucket, and more awesome pro features!

[Learn more, Memberships starting at \\$2.50/m!](#)

**Follow me
on Twitter!**

@ConvertingColor