

Converting Colors

CIELCh(28, 6.223, 55.839)

Have a look what the booklet for
CIELCh(28, 6.223, 55.839) contains.

CIELCh(28, 6.502, 56.375)	3
<i>Conversions</i>	4
<i>Details</i>	6
<i>Harmonies</i>	11
<i>Previews</i>	20
<i>Color Blindness Simulation</i>	23
<i>CSS Examples</i>	26

Color

CIELCh(28, 6.502, 56.375)

Conversions

Conversions Part 1

Format	Color
Hex	4B403A
RGB	75, 64, 58
RGB Percent	29%, 25%, 23%
CMY	0.7061, 0.7493, 0.7728
CMYK	0.00, 0.15, 0.23, 0.71
HSL	21°, 13%, 26%
HSV	21°, 23%, 29%
XYZ	5.4881, 5.4574, 4.7586
YIQ	66.6050, 8.4820, 0.4660

Conversions

Conversions Part 2

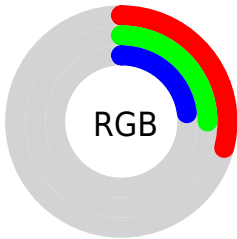
Format	Color
RYB	75, 67, 58
Decimal	4931642
CIELab	28.00, 3.60, 5.41
CIELCh	28, 6.502, 56.375
Yxy	5.4574, 0.3495, 0.3475
Android (android.graphics.Color)	4283121722 (0xFF4B403A)
YUV	66.6050, -4.2423, 4.2756
Hunter-Lab	23.3610, 1.0527, 4.2756

Details

The CIELCh color **28, 6.502, 56.375** is a dark color, and the websafe version is hex **333333**. A complement of this color would be **29, 5.866, 240.395**, and the grayscale version is **28, 0.004, 296.813**.

A 20% lighter version of the original color is **48, 6.533, 58.655**, and **8, 6.630, 60.476** is the 20% darker color. If you saturate the color by 10%, you get **26, 9.674, 55.695**, and if you desaturate by 10%, it is **30, 3.523, 57.098**.

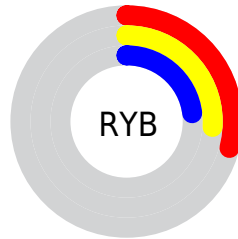
Distribution



Red (29%)

Green (25%)

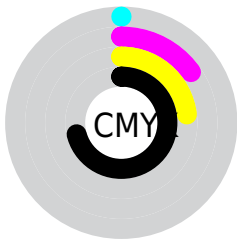
Blue (23%)



Red (29%)

Yellow (26%)

Blue (23%)

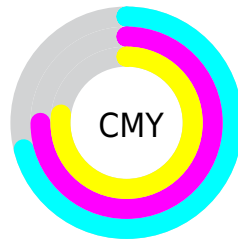


Cyan (0%)

Magenta (15%)

Yellow (23%)

Black (71%)



Cyan (71%)

Magenta (75%)

Yellow (77%)

Brightness & Saturation Gradients

These gradients show how the CIELCh color 28, 6.502, 56.375 changes by changing the brightness by 10 percent. The first figure shows a shift by +10% for each color and the second figure -10%.

Similar to the brightness gradients but the following saturation gradients show a change of the CIELCh color 28, 6.502, 56.375 by changing the saturation by 10% instead.

 28, 6.502, 56.375  28, 6.502, 56.375

 100, 6.502, 56.375  18, 6.502, 56.375

 48, 6.502, 56.375  8, 6.502, 56.375


 58, 6.502, 56.375  0, 6.502, 56.375

 68, 6.502, 56.375

 78, 6.502, 56.375

 88, 6.502, 56.375

 98, 6.502, 56.375

 28, 6.502, 56.375  28, 6.502, 56.375

 26, 9.674, 55.695  30, 3.523, 57.098

■ 25, 13.050, 55.049

■ 31, 0.721, 57.608

■ 23, 16.635, 54.461

■ 33, 1.920, 238.843

■ 22, 20.417, 53.933

■ 35, 4.417, 239.566

■ 20, 24.359, 53.448

■ 37, 6.785, 240.339

■ 19, 28.084, 52.509

■ 38, 9.038, 241.114

■ 18, 31.016, 50.573

■ 40, 11.190,
241.879

■ 17, 33.095, 49.449

■ 42, 13.252,
242.630

■ 44, 15.234,
243.362

Harmonies

Complementary

The Complementary color scheme is a pair of colors which are on the opposite of each other on the color wheel.



28, 6.502, 56.375



29, 5.866, 240.395

Rectangle

The Rectangle color scheme consists of four colors that form a rectangle on the color wheel.



28, 6.502, 56.375



28, 6.502, 106.375



28, 6.502, 236.375



28, 6.502, 286.375

Sweetspot

The Sweet Spot groups the original color and five complimentary colors.



28, 6.502, 56.386



40, 2.365, 57.461



27, 10.436, 337.883



19, 1.517, 57.455



72, 0.009, 296.813



20, 0.004, 296.813

Same Dimension

The Same Dimension uses a secret algorithm to generate beautiful new colors.



28, 6.502, 56.386



35, 9.741, 56.014



31, 9.230, 100.999



14, 1.557, 57.371



24, 44.578, 50.970



55, 85.236, 49.716

Inverse Universe

The Inverse Universe completely reimagines the original color for something new.



29, 5.866, 240.395



36, 8.552, 241.061



26, 9.512, 285.814



14, 1.503, 238.980



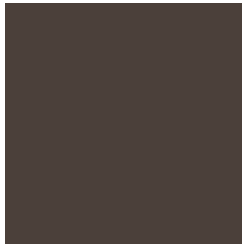
26, 26.468, 262.172



59, 50.083, 266.121

Previews

White Background



This preview shows how the CIELCh color 28, 6.502, 56.375 looks on a white background.

Color Contrast Check

Large Text (above 18pt) WCAG AA ✓ Pass

Any Text WCAG AA ✓ Pass

Large Text (above 18pt) WCAG AAA ✓ Pass

Any Text WCAG AAA ✓ Pass

Black Background



This preview shows how the CIE LCh color 28, 6.502, 56.375 looks on a black background.

Color Contrast Check

Large Text (above 18pt) WCAG AA × Fail

Any Text WCAG AA × Fail

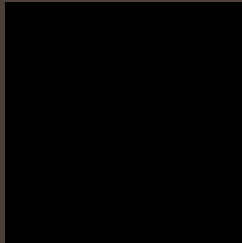
Large Text (above 18pt) WCAG AAA × Fail

Any Text WCAG AAA × Fail

If you want to check with other color combinations, try the [Color Contrast Checker](#).

CIELCh 28, 6.502, 56.375

Background



This preview shows how black text looks on a background with the CIELCh color 28, 6.502, 56.375.

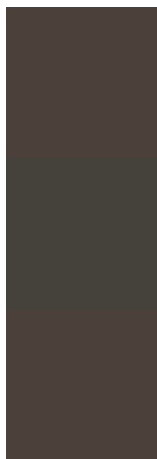


This preview shows how white text looks on a background with the CIELCh color 28, 6.502, 56.375.

Color Blindness Simulation

Color vision deficiency is a very complex topic, and I could not describe the different causes any better than Wikipedia does, so if you want to learn more, you should check out their [article about color blindness](#).

Dichromacy



Original Color

28, 6.502, 56.375

Protanopia

28, 4.716, 92.105

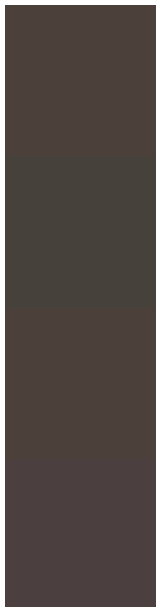
Deuteranopia

28, 6.502, 56.375



Tritanopia
28, 6.421, 356.915

Trichromacy



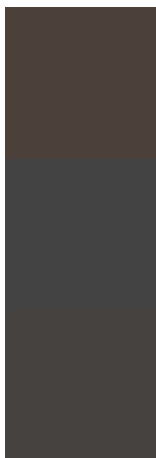
Original Color
28, 6.502, 56.375

Protanomaly
28, 4.777, 73.544

Deuteranomaly
28, 6.502, 56.375

Tritanomaly
28, 6.002, 14.296

Monochromacy



Original Color
28, 6.502, 56.375

Achromatopsia
28, 0.004, 296.813

Achromatomaly
28, 2.219, 54.994

CSS Examples

Text

The CSS property to change the color of the text to CIELCh 28, 6.502, 56.375 is called "color". The color property can be set on classes, ids or directly on the HTML element.

This example shows how text in the color `rgb(75, 64, 58)` looks like.

```
.text, #text, p{  
    color:rgb(75, 64, 58)  
}
```

If you want to add a text shadow in that color use the text-shadow property, you can generate a text shadow directly with our [CSS Text Shadow Generator](#).

Here you see how black text with a 4 pixel rgb(75, 64, 58) colored shadow looks like.

```
.shadow{ text-shadow: 4px 4px 2px rgb(75, 64, 58) }
```

Border

The CSS property to change the border of an element to CIELCh 28, 6.502, 56.375 is called "border". The border property can be set on classes, ids or directly on the HTML element.

This example shows the color as border, it can be applied via the CSS property "border" or "border-color".

```
.border, #border, table{ border:4px solid rgb(75, 64, 58) }
```

If only the border color should be changed use the property border-color.

```
.border{ border-color:rgb(75, 64, 58) }
```

If you want to add a box shadow in that color use:

Here you see how a box with a 4 pixel rgb(75, 64, 58) colored shadow looks like.

```
.boxshadow{ -moz-box-shadow:4px 4px 4px  
4px rgb(75, 64, 58); -webkit-box-  
shadow:4px 4px 4px 4px rgb(75, 64, 58);  
box-shadow:4px 4px 4px 4px rgb(75, 64, 58)  
}
```

Background

The CSS property to change the background color of an element to CIELCh 28, 6.502, 56.375 is called "background". The background property can be set on classes, ids or directly on the HTML element.

```
.background, #background, body{  
background: rgb(75, 64, 58) }
```

If only the background color should be changed can be used:

```
.background{ background-color: rgb(75, 64,  
58) }
```

This example shows the color as background, it is applied via the CSS property "background".

To optimize and compress your CSS code, you can use our [online CSS compressor and optimizer](#) based on csstidy. If you want to create a linear or radial gradient as background or border, check our [CSS Gradient Generator](#).

Hey! You found this booklet interesting? Support Converting Colors with the new Membership Option!

The pro membership hides all ads, plus gives you double the colors in the color bucket, and more awesome pro features!

[Learn more, Memberships starting at \\$2.50/m!](#)

**Follow me
on Twitter!**

@ConvertingColor