

Converting Colors

CIELCh(28, 9.327, 14.134)

Have a look what the booklet for
CIELCh(28, 9.327, 14.134) contains.

CIELCh(28, 9.365, 13.257)	3
<i>Conversions</i>	4
<i>Details</i>	6
<i>Harmonies</i>	11
<i>Previews</i>	20
<i>Color Blindness Simulation</i>	23
<i>CSS Examples</i>	26

Color

CIELCh(28, 9.365, 13.257)

Conversions

Conversions Part 1

Format	Color
Hex	513D3F
RGB	81, 61, 63
RGB Percent	32%, 24%, 25%
CMY	0.6821, 0.7605, 0.7527
CMYK	0.00, 0.25, 0.22, 0.68
HSL	354°, 14%, 28%
HSV	354°, 25%, 32%
XYZ	5.9715, 5.4574, 5.4517
YIQ	67.2080, 11.2780, 4.8620

Conversions

Conversions Part 2

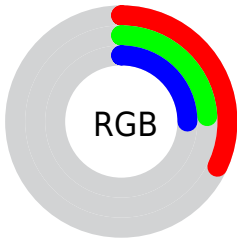
Format	Color
RYB	81, 61, 63
Decimal	5324095
CIELab	28.00, 9.12, 2.15
CIElCh	28, 9.365, 13.257
Yxy	5.4574, 0.3538, 0.3233
Android (android.graphics.Color)	4283514175 (0xFF513D3F)
YUV	67.2080, -2.0745, 12.0956
Hunter-Lab	23.3610, 4.7462, 2.5165

Details

The CIELCh color **28, 9.365, 13.257** is a dark color, and the websafe version is hex **333333**. A complement of this color would be **33, 8.304, 189.452**, and the grayscale version is **29, 0.004, 296.813**.

A 20% lighter version of the original color is **48, 9.269, 13.269**, and **8, 9.392, 13.202** is the 20% darker color. If you saturate the color by 10%, you get **26, 13.522, 14.460**, and if you desaturate by 10%, it is **31, 5.409, 12.262**.

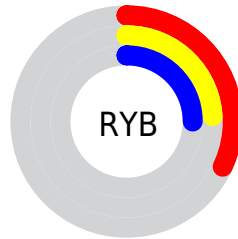
Distribution



Red (32%)

Green (24%)

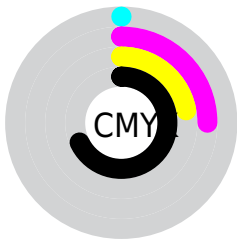
Blue (25%)



Red (32%)

Yellow (24%)

Blue (25%)

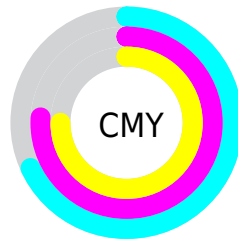


Cyan (0%)

Magenta (25%)

Yellow (22%)

Black (68%)



Cyan (68%)

Magenta (76%)

Yellow (75%)

Brightness & Saturation Gradients

These gradients show how the CIELCh color 28, 9.365, 13.257 changes by changing the brightness by 10 percent. The first figure shows a shift by +10% for each color and the second figure -10%.

Similar to the brightness gradients but the following saturation gradients show a change of the CIELCh color 28, 9.365, 13.257 by changing the saturation by 10% instead.

■ 28, 9.365, 13.257 ■ 28, 9.365, 13.257

■ 100, 9.365, 13.257 ■ 18, 9.365, 13.257

■ 48, 9.365, 13.257 ■ 8, 9.365, 13.257

■ 58, 9.365, 13.257 ■ 0, 9.365, 13.257

■ 68, 9.365, 13.257

■ 78, 9.365, 13.257

■ 88, 9.365, 13.257

■ 98, 9.365, 13.257

■ 28, 9.365, 13.257 ■ 28, 9.365, 13.257

■ 26, 13.522, 14.460 ■ 31, 5.409, 12.262

23, 17.845, 15.926

33, 1.672, 11.329

21, 22.266, 17.744

36, 1.847, 190.957

19, 26.684, 20.011

39, 5.156, 190.267

17, 30.978, 22.824

41, 8.272, 189.732

16, 34.985, 26.113

44, 11.211,
189.271

15, 38.282, 28.106

47, 13.990,
188.867

14, 39.912, 28.299

50, 16.625,
188.507

52, 19.133,
188.183

Harmonies

Complementary

The Complementary color scheme is a pair of colors which are on the opposite of each other on the color wheel.



28, 9.365, 13.257



33, 8.304, 189.452

Rectangle

The Rectangle color scheme consists of four colors that form a rectangle on the color wheel.



28, 9.365, 13.257



28, 9.365, 63.257



28, 9.365, 193.257



28, 9.365, 243.257

Sweetspot

The Sweet Spot groups the original color and five complimentary colors.



28, 9.364, 13.263



42, 3.114, 11.586



28, 15.020, 322.795



21, 2.041, 11.605



74, 0.009, 296.813



22, 0.004, 296.813

Same Dimension

The Same Dimension uses a secret algorithm to generate beautiful new colors.



28, 9.364, 13.263



35, 14.298, 13.996



30, 7.636, 61.607



15, 2.035, 11.723



20, 49.465, 32.223



49, 93.055, 36.495

Inverse Universe

The Inverse Universe completely reimagines the original color for something new.



28, 9.364, 13.263



35, 14.298, 13.996



30, 6.924, 246.775



15, 2.035, 11.723



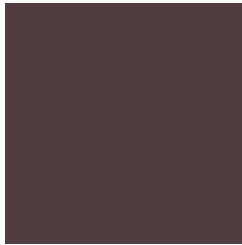
20, 49.465, 32.223



49, 93.055, 36.495

Previews

White Background



This preview shows how the CIELCh color 28, 9.365, 13.257 looks on a white background.

Color Contrast Check

Large Text (above 18pt) WCAG AA ✓ Pass

Any Text WCAG AA ✓ Pass

Large Text (above 18pt) WCAG AAA ✓ Pass

Any Text WCAG AAA ✓ Pass

Black Background



This preview shows how the CIELCh color 28, 9.365, 13.257 looks on a black background.

Color Contrast Check

Large Text (above 18pt) WCAG AA × Fail

Any Text WCAG AA × Fail

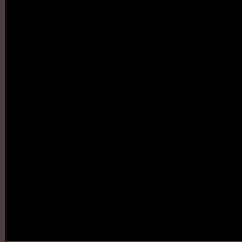
Large Text (above 18pt) WCAG AAA × Fail

Any Text WCAG AAA × Fail

If you want to check with other color combinations, try the [Color Contrast Checker](#).

CIELCh 28, 9.365, 13.257

Background



This preview shows how black text looks on a background with the CIELCh color 28, 9.365, 13.257.

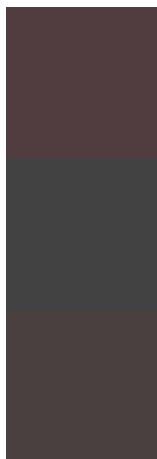


This preview shows how white text looks on a background with the CIELCh color 28, 9.365, 13.257.

Color Blindness Simulation

Color vision deficiency is a very complex topic, and I could not describe the different causes any better than Wikipedia does, so if you want to learn more, you should check out their [article about color blindness](#).

Dichromacy



Original Color

28, 9.365, 13.257

Protanopia

28, 0.446, 18.918

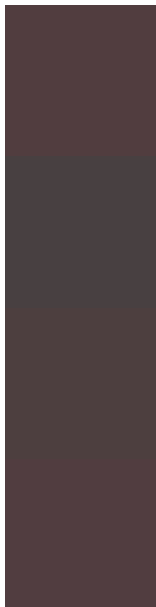
Deuteranopia

28, 4.645, 28.074



Tritanopia
28, 9.527, 5.566

Trichromacy



Original Color
28, 9.365, 13.257

Protanomaly
28, 3.687, 9.927

Deuteranomaly
28, 6.472, 20.503

Tritanomaly
28, 9.423, 9.377

Monochromacy



Original Color
28, 9.365, 13.257

Achromatopsia
28, 0.004, 296.813

Achromatomaly
28, 3.228, 8.393

CSS Examples

Text

The CSS property to change the color of the text to CIELCh 28, 9.365, 13.257 is called "color". The color property can be set on classes, ids or directly on the HTML element.

This example shows how text in the color `rgb(81, 61, 63)` looks like.

```
.text, #text, p{  
    color:rgb(81, 61, 63)  
}
```

If you want to add a text shadow in that color use the text-shadow property, you can generate a text shadow directly with our [CSS Text Shadow Generator](#).

Here you see how black text with a 4 pixel rgb(81, 61, 63) colored shadow looks like.

```
.shadow{ text-shadow: 4px 4px 2px rgb(81, 61, 63) }
```

Border

The CSS property to change the border of an element to CIELCh 28, 9.365, 13.257 is called "border". The border property can be set on classes, ids or directly on the HTML element.

This example shows the color as border, it can be applied via the CSS property "border" or "border-color".

```
.border, #border, table{ border:4px solid rgb(81, 61, 63) }
```

If only the border color should be changed use the property border-color.

```
.border{ border-color:rgb(81, 61, 63) }
```

If you want to add a box shadow in that color use:

Here you see how a box with a 4 pixel rgb(81, 61, 63) colored shadow looks like.

```
.boxshadow{ -moz-box-shadow:4px 4px 4px  
4px rgb(81, 61, 63); -webkit-box-  
shadow:4px 4px 4px 4px rgb(81, 61, 63);  
box-shadow:4px 4px 4px 4px rgb(81, 61, 63)  
}
```

Background

The CSS property to change the background color of an element to CIELCh 28, 9.365, 13.257 is called "background". The background property can be set on classes, ids or directly on the HTML element.

```
.background, #background, body{  
background: rgb(81, 61, 63) }
```

If only the background color should be changed can be used:

```
.background{ background-color: rgb(81, 61,  
63) }
```

This example shows the color as background, it is applied via the CSS property "background".

To optimize and compress your CSS code, you can use our [online CSS compressor and optimizer](#) based on csstidy. If you want to create a linear or radial gradient as background or border, check our [CSS Gradient Generator](#).

Hey! You found this booklet interesting? Support Converting Colors with the new Membership Option!

The pro membership hides all ads, plus gives you double the colors in the color bucket, and more awesome pro features!

[Learn more, Memberships starting at \\$2.50/m!](#)

**Follow me
on Twitter!**

@ConvertingColor