

Converting Colors

CIELCh(29, 12.731, 10.284)

Have a look what the booklet for
CIELCh(29, 12.731, 10.284) contains.

CIELCh(29, 12.732, 10.280)	3
<i>Conversions</i>	4
<i>Details</i>	6
<i>Harmonies</i>	11
<i>Previews</i>	20
<i>Color Blindness Simulation</i>	23
<i>CSS Examples</i>	26

Color

CIELCh(29, 12.732, 10.280)

Conversions

Conversions Part 1

Format	Color
Hex	583D41
RGB	88, 61, 65
RGB Percent	35%, 24%, 25%
CMY	0.6538, 0.7598, 0.7441
CMYK	0.00, 0.31, 0.26, 0.65
HSL	351°, 18%, 29%
HSV	351°, 31%, 35%
XYZ	6.6949, 5.8380, 5.8143
YIQ	69.5290, 14.8080, 6.9680

Conversions

Conversions Part 2

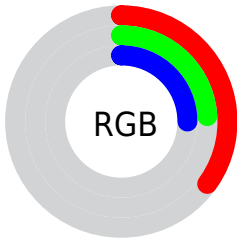
Format	Color
RYB	88, 61, 65
Decimal	5782849
CIELab	29.00, 12.53, 2.27
CIElCh	29, 12.732, 10.280
Yxy	5.8380, 0.3649, 0.3182
Android (android.graphics.Color)	4283972929 (0xFF583D41)
YUV	69.5290, -2.2328, 16.1991
Hunter-Lab	24.1619, 7.1763, 2.6459

Details

The CIELCh color **29, 12.732, 10.280** is a dark color, and the websafe version is hex **663333**. A complement of this color would be **35, 11.114, 184.884**, and the grayscale version is **30, 0.005, 296.813**.

A 20% lighter version of the original color is **49, 12.760, 10.478**, and **9, 12.758, 7.724** is the 20% darker color. If you saturate the color by 10%, you get **26, 17.264, 11.695**, and if you desaturate by 10%, it is **32, 8.359, 9.112**.

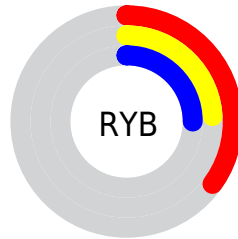
Distribution



Red (35%)

Green (24%)

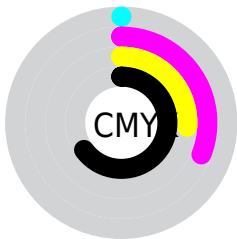
Blue (25%)



Red (35%)

Yellow (24%)

Blue (25%)

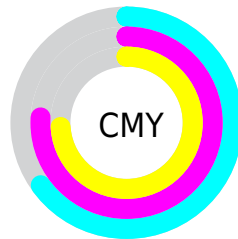


Cyan (0%)

Magenta (31%)

Yellow (26%)

Black (65%)



Cyan (65%)

Magenta (76%)

Yellow (74%)

Brightness & Saturation Gradients

These gradients show how the CIELCh color 29, 12.732, 10.280 changes by changing the brightness by 10 percent. The first figure shows a shift by +10% for each color and the second figure -10%.

Similar to the brightness gradients but the following saturation gradients show a change of the CIELCh color 29, 12.732, 10.280 by changing the saturation by 10% instead.

■ 29, 12.732, 10.280

■ 29, 12.732, 10.280

■ 100, 12.732,
10.280

■ 19, 12.732, 10.280

■ 49, 12.732, 10.280

■ 9, 12.732, 10.280

■ 59, 12.732, 10.280

■ 0, 12.732, 10.280

■ 69, 12.732, 10.280

■ 79, 12.732, 10.280

■ 89, 12.732, 10.280

■ 99, 12.732, 10.280

■ 29, 12.732, 10.280

■ 29, 12.732, 10.280

26, 17.264, 11.695

32, 8.359, 9.112

24, 21.889, 13.424

35, 4.188, 8.104

22, 26.499, 15.569

37, 0.234, 6.102

20, 30.958, 18.239

40, 3.504, 186.714

18, 35.127, 21.539

43, 7.035, 186.048

17, 38.903, 25.438

46, 10.373,
185.484

16, 42.163, 27.595

49, 13.534,
184.986

52, 16.535,
184.540

55, 19.392,
184.137

Harmonies

Complementary

The Complementary color scheme is a pair of colors which are on the opposite of each other on the color wheel.



29, 12.732, 10.280



35, 11.114, 184.884

Rectangle

The Rectangle color scheme consists of four colors that form a rectangle on the color wheel.



29, 12.732, 10.280



29, 12.732, 60.280



29, 12.732, 190.280



29, 12.732, 240.280

Sweetspot

The Sweet Spot groups the original color and five complimentary colors.



29, 12.731, 10.284



45, 4.397, 7.978



29, 19.756, 321.578



22, 3.088, 8.074



76, 0.009, 296.813



25, 0.004, 296.813

Same Dimension

The Same Dimension uses a secret algorithm to generate beautiful new colors.



29, 12.731, 10.284



36, 19.435, 11.332



32, 10.335, 55.442



16, 2.166, 7.926



21, 49.318, 30.024



49, 91.081, 33.883

Inverse Universe

The Inverse Universe completely reimagines the original color for something new.



29, 12.731, 10.284



36, 19.435, 11.332



32, 8.904, 241.109



16, 2.166, 7.926



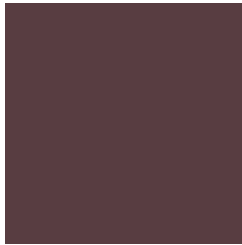
21, 49.318, 30.024



49, 91.081, 33.883

Previews

White Background



This preview shows how the CIELCh color 29, 12.732, 10.280 looks on a white background.

Color Contrast Check

Large Text (above 18pt) WCAG AA ✓ Pass

Any Text WCAG AA ✓ Pass

Large Text (above 18pt) WCAG AAA ✓ Pass

Any Text WCAG AAA ✓ Pass

Black Background



This preview shows how the CIELCh color 29, 12.732, 10.280 looks on a black background.

Color Contrast Check

Large Text (above 18pt) WCAG AA × Fail

Any Text WCAG AA × Fail

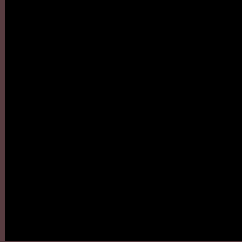
Large Text (above 18pt) WCAG AAA × Fail

Any Text WCAG AAA × Fail

If you want to check with other color combinations, try the [Color Contrast Checker](#).

CIELCh 29, 12.732, 10.280

Background



This preview shows how black text looks on a background with the CIELCh color 29, 12.732, 10.280.

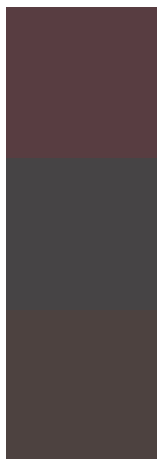


This preview shows how white text looks on a background with the CIELCh color 29, 12.732, 10.280.

Color Blindness Simulation

Color vision deficiency is a very complex topic, and I could not describe the different causes any better than Wikipedia does, so if you want to learn more, you should check out their [article about color blindness](#).

Dichromacy



Original Color

29, 12.732, 10.280

Protanopia

29, 1.103, 343.683

Deuteranopia

29, 5.229, 34.306



Tritanopia
29, 12.808, 7.456

Trichromacy



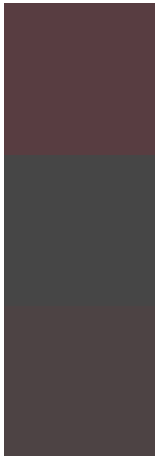
Original Color
29, 12.732, 10.280

Protanomaly
29, 5.131, 5.823

Deuteranomaly
29, 7.874, 20.744

Tritanomaly
29, 12.808, 7.456

Monochromacy



Original Color
29, 12.732, 10.280

Achromatopsia
30, 0.005, 296.813

Achromatomaly
29, 4.563, 12.091

CSS Examples

Text

The CSS property to change the color of the text to CIELCh 29, 12.732, 10.280 is called "color". The color property can be set on classes, ids or directly on the HTML element.

This example shows how text in the color `rgb(88, 61, 65)` looks like.

```
.text, #text, p{  
    color:rgb(88, 61, 65)  
}
```

If you want to add a text shadow in that color use the text-shadow property, you can generate a text shadow directly with our [CSS Text Shadow Generator](#).

Here you see how black text with a 4 pixel rgb(88, 61, 65) colored shadow looks like.

```
.shadow{ text-shadow: 4px 4px 2px rgb(88, 61, 65) }
```

Border

The CSS property to change the border of an element to CIELCh 29, 12.732, 10.280 is called "border". The border property can be set on classes, ids or directly on the HTML element.

This example shows the color as border, it can be applied via the CSS property "border" or "border-color".

```
.border, #border, table{ border:4px solid rgb(88, 61, 65) }
```

If only the border color should be changed use the property border-color.

```
.border{ border-color:rgb(88, 61, 65) }
```

If you want to add a box shadow in that color use:

Here you see how a box with a 4 pixel rgb(88, 61, 65) colored shadow looks like.

```
.boxshadow{ -moz-box-shadow:4px 4px 4px  
4px rgb(88, 61, 65); -webkit-box-  
shadow:4px 4px 4px 4px rgb(88, 61, 65);  
box-shadow:4px 4px 4px 4px rgb(88, 61, 65)  
}
```

Background

The CSS property to change the background color of an element to CIELCh 29, 12.732, 10.280 is called "background". The background property can be set on classes, ids or directly on the HTML element.

```
.background, #background, body{  
background: rgb(88, 61, 65) }
```

If only the background color should be changed can be used:

```
.background{ background-color: rgb(88, 61,  
65) }
```

This example shows the color as background, it is applied via the CSS property "background".

To optimize and compress your CSS code, you can use our [online CSS compressor and optimizer](#) based on csstidy. If you want to create a linear or radial gradient as background or border, check our [CSS Gradient Generator](#).

Hey! You found this booklet interesting? Support Converting Colors with the new Membership Option!

The pro membership hides all ads, plus gives you double the colors in the color bucket, and more awesome pro features!

[Learn more, Memberships starting at \\$2.50/m!](#)

**Follow me
on Twitter!**

@ConvertingColor