

Converting Colors

CIELCh(31, 15.000, 7.971)

Have a look what the booklet for
CIELCh(31, 15.000, 7.971) contains.

CIELCh(31, 15.051, 7.685)	3
<i>Conversions</i>	4
<i>Details</i>	6
<i>Harmonies</i>	11
<i>Previews</i>	20
<i>Color Blindness Simulation</i>	23
<i>CSS Examples</i>	26

Color

CIELCh(31, 15.051, 7.685)

Conversions

Conversions Part 1

Format	Color
Hex	604046
RGB	96, 64, 70
RGB Percent	38%, 25%, 27%
CMY	0.6222, 0.7478, 0.7243
CMYK	0.00, 0.33, 0.27, 0.62
HSL	349°, 20%, 31%
HSV	349°, 33%, 38%
XYZ	7.8238, 6.6515, 6.7160
YIQ	74.2520, 17.1460, 8.6500

Conversions

Conversions Part 2

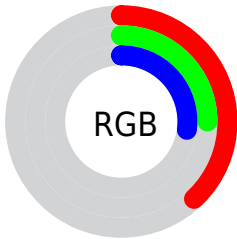
Format	Color
RYB	96, 64, 70
Decimal	6307910
CIELab	31.00, 14.92, 2.01
CIELCh	31, 15.051, 7.685
Yxy	6.6515, 0.3692, 0.3139
Android (android.graphics.Color)	4284497990 (0xFF604046)
YUV	74.2520, -2.0962, 19.0730
Hunter-Lab	25.7905, 9.0164, 2.6139

Details

The CIELCh color **31, 15.051, 7.685** is a dark color, and the websafe version is hex **663333**. A complement of this color would be **38, 13.158, 181.385**, and the grayscale version is **32, 0.005, 296.813**.

A 20% lighter version of the original color is **51, 14.929, 7.826**, and **11, 14.657, 7.756** is the 20% darker color. If you saturate the color by 10%, you get **28, 19.926, 9.211**, and if you desaturate by 10%, it is **34, 10.297, 6.423**.

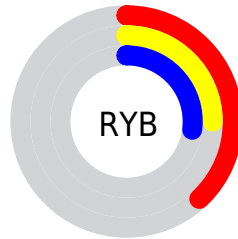
Distribution



Red (38%)

Green (25%)

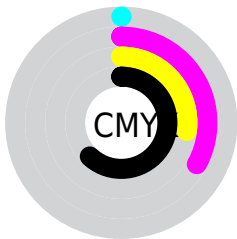
Blue (27%)



Red (38%)

Yellow (25%)

Blue (27%)

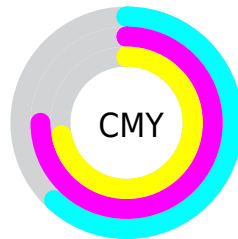


Cyan (0%)

Magenta (33%)

Yellow (27%)

Black (62%)



Cyan (62%)

Magenta (75%)

Yellow (72%)

Brightness & Saturation Gradients

These gradients show how the CIELCh color 31, 15.051, 7.685 changes by changing the brightness by 10 percent. The first figure shows a shift by +10% for each color and the second figure -10%.

Similar to the brightness gradients but the following saturation gradients show a change of the CIELCh color 31, 15.051, 7.685 by changing the saturation by 10% instead.

■ 31, 15.051, 7.685 ■ 31, 15.051, 7.685

■ 100, 15.051, 7.685 ■ 21, 15.051, 7.685

■ 51, 15.051, 7.685 ■ 11, 15.051, 7.685

■ 61, 15.051, 7.685 ■ 1, 15.051, 7.685

■ 71, 15.051, 7.685 ■ 0, 15.051, 7.685

■ 81, 15.051, 7.685

■ 91, 15.051, 7.685

■ 31, 15.051, 7.685 ■ 31, 15.051, 7.685

■ 28, 19.926, 9.211 ■ 34, 10.297, 6.423

■ 26, 24.828, 11.076 ■ 37, 5.726, 5.343

■ 23, 29.620, 13.390

■ 40, 1.368, 4.271

■ 22, 34.139, 16.275

■ 43, 2.769, 183.818

■ 20, 38.233, 19.843

■ 46, 6.690, 183.067

■ 19, 41.889, 24.026

■ 49, 10.406,
182.440

■ 18, 44.445, 26.407

■ 52, 13.931,
181.886

■ 55, 17.284,
181.389

■ 59, 20.481,
180.937

Harmonies

Complementary

The Complementary color scheme is a pair of colors which are on the opposite of each other on the color wheel.



31, 15.051, 7.685



38, 13.158, 181.385

Rectangle

The Rectangle color scheme consists of four colors that form a rectangle on the color wheel.



31, 15.051, 7.685



31, 15.051, 57.685



31, 15.051, 187.685



31, 15.051, 237.685

Sweetspot

The Sweet Spot groups the original color and five complimentary colors.



31, 15.050, 7.689



49, 5.317, 5.047



31, 22.801, 320.179



24, 3.665, 5.144



77, 0.009, 296.813



27, 0.004, 296.813

Same Dimension

The Same Dimension uses a secret algorithm to generate beautiful new colors.



31, 15.050, 7.689



38, 22.758, 8.875



33, 12.294, 49.730



18, 2.410, 4.905



22, 49.991, 27.693



50, 90.219, 31.341

Inverse Universe

The Inverse Universe completely reimagines the original color for something new.



31, 15.050, 7.689



38, 22.758, 8.875



35, 10.193, 234.665



18, 2.410, 4.905



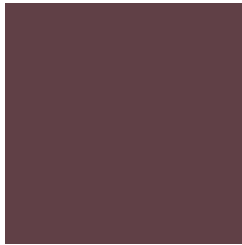
22, 49.991, 27.693



50, 90.219, 31.341

Previews

White Background



This preview shows how the CIE LCh color 31, 15.051, 7.685 looks on a white background.

Color Contrast Check

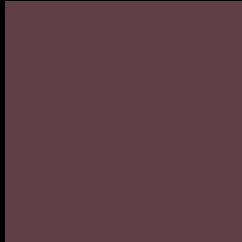
Large Text (above 18pt) WCAG AA ✓ Pass

Any Text WCAG AA ✓ Pass

Large Text (above 18pt) WCAG AAA ✓ Pass

Any Text WCAG AAA ✓ Pass

Black Background



This preview shows how the CIE LCh color 31, 15.051, 7.685 looks on a black background.

Color Contrast Check

Large Text (above 18pt) WCAG AA × Fail

Any Text WCAG AA × Fail

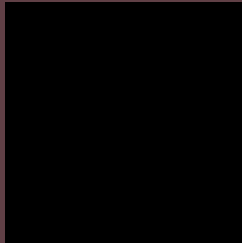
Large Text (above 18pt) WCAG AAA × Fail

Any Text WCAG AAA × Fail

If you want to check with other color combinations, try the [Color Contrast Checker](#).

CIELCh 31, 15.051, 7.685

Background



This preview shows how black text looks on a background with the CIELCh color 31, 15.051, 7.685.

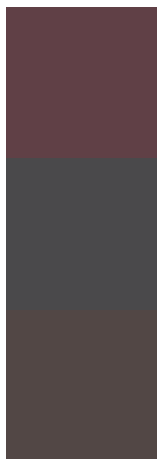


This preview shows how white text looks on a background with the CIELCh color 31, 15.051, 7.685.

Color Blindness Simulation

Color vision deficiency is a very complex topic, and I could not describe the different causes any better than Wikipedia does, so if you want to learn more, you should check out their [article about color blindness](#).

Dichromacy



Original Color

31, 15.051, 7.685

Protanopia

31, 1.354, 309.129

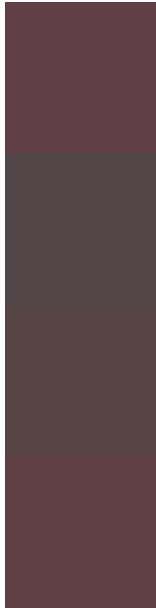
Deuteranopia

31, 5.156, 34.292



Tritanopia
31, 14.982, 10.061

Trichromacy



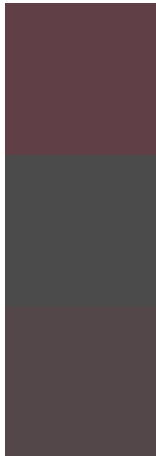
Original Color
31, 15.051, 7.685

Protanomaly
31, 5.679, 0.779

Deuteranomaly
31, 8.233, 20.737

Tritanomaly
31, 14.982, 10.061

Monochromacy



Original Color
31, 15.051, 7.685

Achromatopsia
32, 0.005, 296.813

Achromatomaly
31, 5.507, 7.019

CSS Examples

Text

The CSS property to change the color of the text to CIELCh 31, 15.051, 7.685 is called "color". The color property can be set on classes, ids or directly on the HTML element.

This example shows how text in the color `rgb(96, 64, 70)` looks like.

```
.text, #text, p{  
    color:rgb(96, 64, 70)  
}
```

If you want to add a text shadow in that color use the text-shadow property, you can generate a text shadow directly with our [CSS Text Shadow Generator](#).

Here you see how black text with a 4 pixel rgb(96, 64, 70) colored shadow looks like.

```
.shadow{ text-shadow: 4px 4px 2px rgb(96, 64, 70) }
```

Border

The CSS property to change the border of an element to CIELCh 31, 15.051, 7.685 is called "border". The border property can be set on classes, ids or directly on the HTML element.

This example shows the color as border, it can be applied via the CSS property "border" or "border-color".

```
.border, #border, table{ border:4px solid rgb(96, 64, 70) }
```

If only the border color should be changed use the property `border-color`.

```
.border{ border-color:rgb(96, 64, 70) }
```

If you want to add a box shadow in that color use:

Here you see how a box with a 4 pixel `rgb(96, 64, 70)` colored shadow looks like.

```
.boxshadow{ -moz-box-shadow:4px 4px 4px  
4px rgb(96, 64, 70); -webkit-box-  
shadow:4px 4px 4px 4px rgb(96, 64, 70);  
box-shadow:4px 4px 4px 4px rgb(96, 64, 70)  
}
```

Background

The CSS property to change the background color of an element to CIELCh 31, 15.051, 7.685 is called "background". The background property can be set on classes, ids or directly on the HTML element.

```
.background, #background, body{  
background: rgb(96, 64, 70) }
```

If only the background color should be changed can be used:

```
.background{ background-color: rgb(96, 64,  
70) }
```

This example shows the color as background, it is applied via the CSS property "background".

To optimize and compress your CSS code, you can use our [online CSS compressor and optimizer](#) based on csstidy. If you want to create a linear or radial gradient as background or border, check our [CSS Gradient Generator](#).

Hey! You found this booklet interesting? Support Converting Colors with the new Membership Option!

The pro membership hides all ads, plus gives you double the colors in the color bucket, and more awesome pro features!

[Learn more, Memberships starting at \\$2.50/m!](#)

**Follow me
on Twitter!**

@ConvertingColor