

Converting Colors

CIELCh(31, 17.280, 16.318)

Have a look what the booklet for
CIELCh(31, 17.280, 16.318) contains.

CIELCh(31, 17.325, 16.364)	3
<i>Conversions</i>	4
<i>Details</i>	6
<i>Harmonies</i>	11
<i>Previews</i>	20
<i>Color Blindness Simulation</i>	23
<i>CSS Examples</i>	26

Color

CIELCh(31, 17.325, 16.364)

Conversions

Conversions Part 1

Format	Color
Hex	643F42
RGB	100, 63, 66
RGB Percent	39%, 25%, 26%
CMY	0.6080, 0.7531, 0.7413
CMYK	0.00, 0.37, 0.34, 0.61
HSL	355°, 23%, 32%
HSV	355°, 37%, 39%
XYZ	8.0095, 6.6515, 6.0109
YIQ	74.4050, 21.0890, 8.7770

Conversions

Conversions Part 2

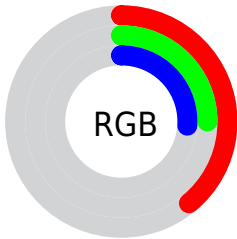
Format	Color
R_{YB}	100, 63, 66
Decimal	6569794
CIE Lab	31.00, 16.62, 4.88
CIE LCh	31, 17.325, 16.364
Yxy	6.6515, 0.3875, 0.3218
Android (android.graphics.Color)	4284759874 (0xFF643F42)
YUV	74.4050, -4.1437, 22.4468
Hunter-Lab	25.7905, 10.3017, 4.2349

Details

The CIELCh color $31, 17.325, 16.364$ is a dark color, and the websafe version is hex 663333 . A complement of this color would be $40, 14.146, 190.168$, and the grayscale version is $32, 0.005, 296.813$.

A 20% lighter version of the original color is $51, 17.367, 15.824$, and $11, 17.796, 14.678$ is the 20% darker color. If you saturate the color by 10%, you get $28, 22.557, 17.974$, and if you desaturate by 10%, it is $34, 12.287, 15.078$.

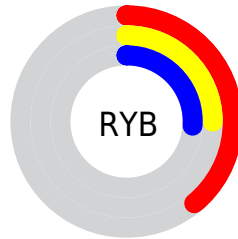
Distribution



Red (39%)

Green (25%)

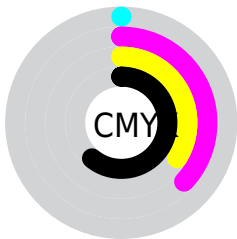
Blue (26%)



Red (39%)

Yellow (25%)

Blue (26%)

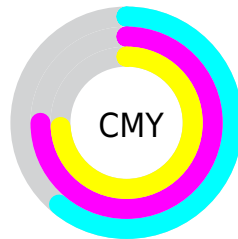


Cyan (0%)

Magenta (37%)

Yellow (34%)

Black (61%)



Cyan (61%)

Magenta (75%)

Yellow (74%)

Brightness & Saturation Gradients

These gradients show how the CIELCh color 31, 17.325, 16.364 changes by changing the brightness by 10 percent. The first figure shows a shift by +10% for each color and the second figure -10%.

Similar to the brightness gradients but the following saturation gradients show a change of the CIELCh color 31, 17.325, 16.364 by changing the saturation by 10% instead.

■ 31, 17.325, 16.364

■ 31, 17.325, 16.364

■ 100, 17.325,
16.364

■ 21, 17.325, 16.364

■ 51, 17.325, 16.364

■ 11, 17.325, 16.364

■ 61, 17.325, 16.364

■ 1, 17.325, 16.364

■ 71, 17.325, 16.364

■ 0, 17.325, 16.364

■ 81, 17.325, 16.364

■ 91, 17.325, 16.364

■ 31, 17.325, 16.364

■ 31, 17.325, 16.364

■ 28, 22.557, 17.974

■ 34, 12.287, 15.078

■ 26, 27.891, 19.992

■ 37, 7.503, 14.021

■ 23, 33.190, 22.526

■ 40, 2.995, 13.102

■ 22, 38.298, 25.664

■ 43, 1.236, 192.764

■ 20, 43.053, 29.399

■ 47, 5.201, 191.962

■ 19, 46.968, 32.104

■ 50, 8.920, 191.423

■ 19, 47.996, 32.432

■ 53, 12.414,
190.968

■ 56, 15.707,
190.573

■ 60, 18.820,
190.226

Harmonies

Complementary

The Complementary color scheme is a pair of colors which are on the opposite of each other on the color wheel.



31, 17.325, 16.364



40, 14.146, 190.168

Rectangle

The Rectangle color scheme consists of four colors that form a rectangle on the color wheel.



31, 17.325, 16.364



31, 17.325, 66.364



31, 17.325, 196.364



31, 17.325, 246.364

Sweetspot

The Sweet Spot groups the original color and five complimentary colors.



31, 17.324, 16.368



50, 5.916, 13.493



32, 26.871, 323.865



25, 4.018, 13.576



78, 0.009, 296.813



28, 0.004, 296.813

Same Dimension

The Same Dimension uses a secret algorithm to generate beautiful new colors.



31, 17.324, 16.368



38, 26.109, 17.672



35, 14.197, 62.256



19, 2.454, 13.279



22, 53.887, 34.084



51, 97.244, 37.436

Inverse Universe

The Inverse Universe completely reimagines the original color for something new.



31, 17.324, 16.368



38, 26.109, 17.672



35, 12.225, 251.086



19, 2.454, 13.279



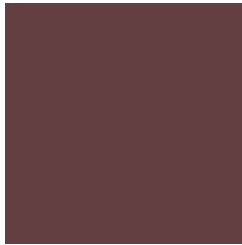
22, 53.887, 34.084



51, 97.244, 37.436

Previews

White Background



This preview shows how the CIELCh color 31, 17.325, 16.364 looks on a white background.

Color Contrast Check

Large Text (above 18pt) WCAG AA ✓ Pass

Any Text WCAG AA ✓ Pass

Large Text (above 18pt) WCAG AAA ✓ Pass

Any Text WCAG AAA ✓ Pass

Black Background



This preview shows how the CIELCh color 31, 17.325, 16.364 looks on a black background.

Color Contrast Check

Large Text (above 18pt) WCAG AA × Fail

Any Text WCAG AA × Fail

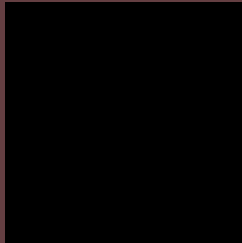
Large Text (above 18pt) WCAG AAA × Fail

Any Text WCAG AAA × Fail

If you want to check with other color combinations, try the [Color Contrast Checker](#).

CIELCh 31, 17.325, 16.364

Background



This preview shows how black text looks on a background with the CIELCh color 31, 17.325, 16.364.

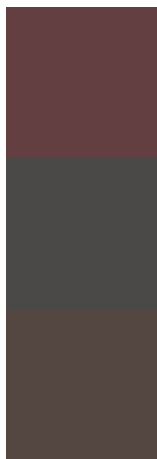


This preview shows how white text looks on a background with the CIELCh color 31, 17.325, 16.364.

Color Blindness Simulation

Color vision deficiency is a very complex topic, and I could not describe the different causes any better than Wikipedia does, so if you want to learn more, you should check out their [article about color blindness](#).

Dichromacy



Original Color

31, 17.325, 16.364

Protanopia

31, 1.539, 74.723

Deuteranopia

31, 7.157, 52.056



Tritanopia
31, 17.309, 14.295

Trichromacy



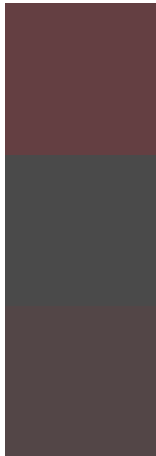
Original Color
31, 17.325, 16.364

Protanomaly
31, 6.830, 20.496

Deuteranomaly
31, 10.491, 31.367

Tritanomaly
31, 17.309, 14.295

Monochromacy



Original Color
31, 17.325, 16.364

Achromatopsia
31, 0.005, 296.813

Achromatomaly
31, 5.890, 14.184

CSS Examples

Text

The CSS property to change the color of the text to CIELCh 31, 17.325, 16.364 is called "color". The color property can be set on classes, ids or directly on the HTML element.

This example shows how text in the color `rgb(100, 63, 66)` looks like.

```
.text, #text, p{  
    color:rgb(100, 63, 66)  
}
```

If you want to add a text shadow in that color use the text-shadow property, you can generate a text shadow directly with our [CSS Text Shadow Generator](#).

Here you see how black text with a 4 pixel rgb(100, 63, 66) colored shadow looks like.

```
.shadow{ text-shadow: 4px 4px 2px rgb(100, 63, 66) }
```

Border

The CSS property to change the border of an element to CIELCh 31, 17.325, 16.364 is called "border". The border property can be set on classes, ids or directly on the HTML element.

This example shows the color as border, it can be applied via the CSS property "border" or "border-color".

```
.border, #border, table{ border:4px solid rgb(100, 63, 66) }
```

If only the border color should be changed use the property `border-color`.

```
.border{ border-color:rgb(100, 63, 66) }
```

If you want to add a box shadow in that color use:

Here you see how a box with a 4 pixel `rgb(100, 63, 66)` colored shadow looks like.

```
.boxshadow{ -moz-box-shadow:4px 4px 4px  
4px rgb(100, 63, 66); -webkit-box-  
shadow:4px 4px 4px 4px rgb(100, 63, 66);  
box-shadow:4px 4px 4px 4px rgb(100, 63,  
66) }
```

Background

The CSS property to change the background color of an element to CIELCh 31, 17.325, 16.364 is called "background". The background property can be set on classes, ids or directly on the HTML element.

```
.background, #background, body{  
background: rgb(100, 63, 66) }
```

If only the background color should be changed can be used:

```
.background{ background-color: rgb(100, 63,  
66) }
```

This example shows the color as background, it is applied via the CSS property "background".

To optimize and compress your CSS code, you can use our [online CSS compressor and optimizer](#) based on csstidy. If you want to create a linear or radial gradient as background or border, check our [CSS Gradient Generator](#).

Hey! You found this booklet interesting? Support Converting Colors with the new Membership Option!

The pro membership hides all ads, plus gives you double the colors in the color bucket, and more awesome pro features!

[Learn more, Memberships starting at \\$2.50/m!](#)

**Follow me
on Twitter!**

@ConvertingColor