

Converting Colors

CIELCh(31, 4.878, 84.462)

Have a look what the booklet for
CIELCh(31, 4.878, 84.462) contains.

CIELCh(31, 4.996, 82.053)	3
<i>Conversions</i>	4
<i>Details</i>	6
<i>Harmonies</i>	11
<i>Previews</i>	20
<i>Color Blindness Simulation</i>	23
<i>CSS Examples</i>	26

Color

CIELCh(31, 4.996, 82.053)

Conversions

Conversions Part 1

Format	Color
Hex	4D4841
RGB	77, 72, 65
RGB Percent	30%, 28%, 25%
CMY	0.6968, 0.7164, 0.7439
CMYK	0.00, 0.06, 0.16, 0.70
HSL	35°, 8%, 28%
HSV	35°, 16%, 30%
XYZ	6.3869, 6.6515, 5.9950
YIQ	72.6970, 5.2270, -1.1170

Conversions

Conversions Part 2

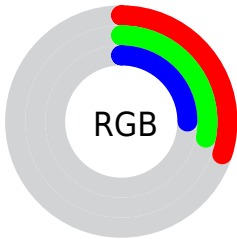
Format	Color
R_{YB}	74, 77, 65
Decimal	5064769
CIE Lab	31.00, 0.69, 4.95
CIE LCh	31, 4.996, 82.053
Yxy	6.6515, 0.3356, 0.3495
Android (android.graphics.Color)	4283254849 (0xFF4D4841)
YUV	72.6970, -3.7946, 3.7737
Hunter-Lab	25.7905, -0.9284, 4.2713

Details

The CIELCh color **31, 4.996, 82.053** is a dark color, and the websafe version is hex **333333**. A complement of this color would be **30, 4.911, 265.856**, and the grayscale version is **31, 0.005, 296.813**.

A 20% lighter version of the original color is **51, 4.754, 78.180**, and **11, 4.883, 82.475** is the 20% darker color. If you saturate the color by 10%, you get **30, 8.339, 80.889**, and if you desaturate by 10%, it is **32, 1.751, 83.168**.

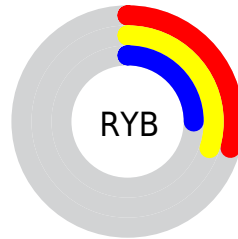
Distribution



Red (30%)

Green (28%)

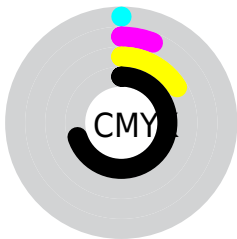
Blue (25%)



Red (29%)

Yellow (30%)

Blue (25%)

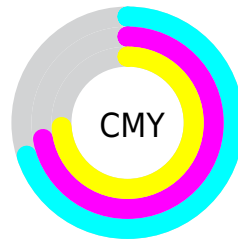


Cyan (0%)

Magenta (6%)

Yellow (16%)

Black (70%)



Cyan (70%)

Magenta (72%)

Yellow (74%)

Brightness & Saturation Gradients

These gradients show how the CIELCh color 31, 4.996, 82.053 changes by changing the brightness by 10 percent. The first figure shows a shift by +10% for each color and the second figure -10%.

Similar to the brightness gradients but the following saturation gradients show a change of the CIELCh color 31, 4.996, 82.053 by changing the saturation by 10% instead.

■ 31, 4.996, 82.053 ■ 31, 4.996, 82.053

■ 100, 4.996, 82.053 ■ 21, 4.996, 82.053

■ 51, 4.996, 82.053 ■ 11, 4.996, 82.053

■ 61, 4.996, 82.053 ■ 1, 4.996, 82.053

■ 71, 4.996, 82.053 ■ 0, 4.996, 82.053

■ 81, 4.996, 82.053

■ 91, 4.996, 82.053

■ 31, 4.996, 82.053 ■ 31, 4.996, 82.053

■ 30, 8.339, 80.889 ■ 32, 1.751, 83.168

■ 29, 11.778, 79.677 ■ 33, 1.401, 264.488

■ 28, 15.307, 78.436

■ 35, 4.467, 265.500

■ 26, 18.905, 77.163

■ 36, 7.454, 266.533

■ 25, 22.524, 75.845

■ 37, 10.369,
267.533

■ 24, 26.073, 74.451

■ 38, 13.218,
268.493

■ 23, 29.318, 72.869

■ 22, 31.909, 71.020

■ 40, 16.008,
269.412

■ 22, 33.064, 70.286

■ 41, 18.745,
270.289

■ 42, 21.432,
271.125

Harmonies

Complementary

The Complementary color scheme is a pair of colors which are on the opposite of each other on the color wheel.



31, 4.996, 82.053



30, 4.911, 265.856

Rectangle

The Rectangle color scheme consists of four colors that form a rectangle on the color wheel.



31, 4.996, 82.053



31, 4.996, 132.053



31, 4.996, 262.053



31, 4.996, 312.053

Sweetspot

The Sweet Spot groups the original color and five complimentary colors.



31, 4.996, 82.066



41, 1.948, 83.202



29, 6.259, 349.657



21, 1.341, 83.165



73, 0.009, 296.813



21, 0.004, 296.813

Same Dimension

The Same Dimension uses a secret algorithm to generate beautiful new colors.



31, 4.996, 82.066



39, 7.575, 81.584



32, 7.556, 112.283



15, 1.760, 82.843



29, 42.054, 69.866



65, 76.785, 67.341

Inverse Universe

The Inverse Universe completely reimagines the original color for something new.



30, 4.911, 265.856



37, 7.403, 266.445



28, 7.800, 294.745



14, 1.747, 264.965



19, 40.792, 288.747



44, 79.482, 291.816

Previews

White Background



This preview shows how the CIELCh color 31, 4.996, 82.053 looks on a white background.

Color Contrast Check

Large Text (above 18pt) WCAG AA ✓ Pass

Any Text WCAG AA ✓ Pass

Large Text (above 18pt) WCAG AAA ✓ Pass

Any Text WCAG AAA ✓ Pass

Black Background



This preview shows how the CIE LCh color 31, 4.996, 82.053 looks on a black background.

Color Contrast Check

Large Text (above 18pt) WCAG AA × Fail

Any Text WCAG AA × Fail

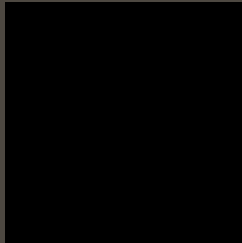
Large Text (above 18pt) WCAG AAA × Fail

Any Text WCAG AAA × Fail

If you want to check with other color combinations, try the [Color Contrast Checker](#).

CIELCh 31, 4.996, 82.053

Background



This preview shows how black text looks on a background with the CIELCh color 31, 4.996, 82.053.

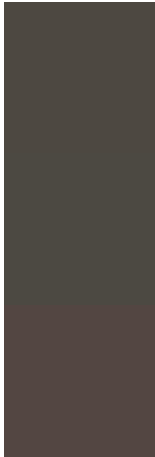


This preview shows how white text looks on a background with the CIELCh color 31, 4.996, 82.053.

Color Blindness Simulation

Color vision deficiency is a very complex topic, and I could not describe the different causes any better than Wikipedia does, so if you want to learn more, you should check out their [article about color blindness](#).

Dichromacy



Original Color

31, 4.996, 82.053

Protanopia

31, 4.636, 92.228

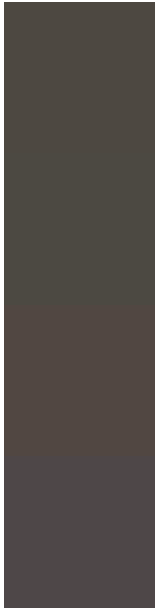
Deuteranopia

31, 6.527, 43.008



Tritanopia
31, 4.747, 338.121

Trichromacy



Original Color

31, 4.996, 82.053

Protanomaly

31, 4.636, 92.228

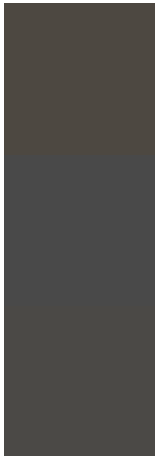
Deuteranomaly

31, 5.595, 54.352

Tritanomaly

31, 3.179, 8.334

Monochromacy



Original Color

31, 4.996, 82.053

Achromatopsia

31, 0.005, 296.813

Achromatomaly

31, 2.092, 84.599

CSS Examples

Text

The CSS property to change the color of the text to CIELCh 31, 4.996, 82.053 is called "color". The color property can be set on classes, ids or directly on the HTML element.

This example shows how text in the color `rgb(77, 72, 65)` looks like.

```
.text, #text, p{  
    color:rgb(77, 72, 65)  
}
```

If you want to add a text shadow in that color use the text-shadow property, you can generate a text shadow directly with our [CSS Text Shadow Generator](#).

Here you see how black text with a 4 pixel rgb(77, 72, 65) colored shadow looks like.

```
.shadow{ text-shadow: 4px 4px 2px rgb(77, 72, 65) }
```

Border

The CSS property to change the border of an element to CIELCh 31, 4.996, 82.053 is called "border". The border property can be set on classes, ids or directly on the HTML element.

This example shows the color as border, it can be applied via the CSS property "border" or "border-color".

```
.border, #border, table{ border:4px solid rgb(77, 72, 65) }
```

If only the border color should be changed use the property `border-color`.

```
.border{ border-color:rgb(77, 72, 65) }
```

If you want to add a box shadow in that color use:

Here you see how a box with a 4 pixel `rgb(77, 72, 65)` colored shadow looks like.

```
.boxshadow{ -moz-box-shadow:4px 4px 4px  
4px rgb(77, 72, 65); -webkit-box-  
shadow:4px 4px 4px 4px rgb(77, 72, 65);  
box-shadow:4px 4px 4px 4px rgb(77, 72, 65)  
}
```

Background

The CSS property to change the background color of an element to CIELCh 31, 4.996, 82.053 is called "background". The background property can be set on classes, ids or directly on the HTML element.

```
.background, #background, body{  
background: rgb(77, 72, 65) }
```

If only the background color should be changed can be used:

```
.background{ background-color: rgb(77, 72,  
65) }
```

This example shows the color as background, it is applied via the CSS property "background".

To optimize and compress your CSS code, you can use our [online CSS compressor and optimizer](#) based on csstidy. If you want to create a linear or radial gradient as background or border, check our [CSS Gradient Generator](#).

Hey! You found this booklet interesting? Support Converting Colors with the new Membership Option!

The pro membership hides all ads, plus gives you double the colors in the color bucket, and more awesome pro features!

[Learn more, Memberships starting at \\$2.50/m!](#)

**Follow me
on Twitter!**

@ConvertingColor