

Converting Colors

CIELCh(32, 10.559, 12.033)

Have a look what the booklet for
CIELCh(32, 10.559, 12.033) contains.

CIELCh(32, 10.591, 10.975)	3
<i>Conversions</i>	4
<i>Details</i>	6
<i>Harmonies</i>	11
<i>Previews</i>	20
<i>Color Blindness Simulation</i>	23
<i>CSS Examples</i>	26

Color

CIELCh(32, 10.591, 10.975)

Conversions

Conversions Part 1

Format	Color
Hex	5C4548
RGB	92, 69, 72
RGB Percent	36%, 27%, 28%
CMY	0.6374, 0.7276, 0.7159
CMYK	0.00, 0.25, 0.22, 0.64
HSL	352°, 14%, 32%
HSV	352°, 25%, 36%
XYZ	7.8014, 7.0852, 7.1643
YIQ	76.2190, 12.7450, 5.8090

Conversions

Conversions Part 2

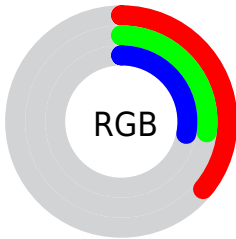
Format	Color
RYB	92, 69, 72
Decimal	6047048
CIELab	32.00, 10.40, 2.02
CIElCh	32, 10.591, 10.975
Yxy	7.0852, 0.3538, 0.3213
Android (android.graphics.Color)	4284237128 (0xFF5C4548)
YUV	76.2190, -2.0800, 13.8399
Hunter-Lab	26.6180, 5.7345, 2.6745

Details

The CIELCh color **32, 10.591, 10.975** is a dark color, and the websafe version is hex **333333**. A complement of this color would be **37, 9.444, 186.827**, and the grayscale version is **33, 0.005, 296.813**.

A 20% lighter version of the original color is **52, 10.866, 11.502**, and **12, 10.155, 10.443** is the 20% darker color. If you saturate the color by 10%, you get **29, 15.223, 12.247**, and if you desaturate by 10%, it is **35, 6.164, 9.918**.

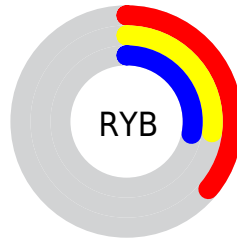
Distribution



Red (36%)

Green (27%)

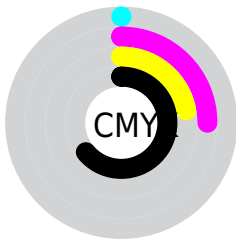
Blue (28%)



Red (36%)

Yellow (27%)

Blue (28%)

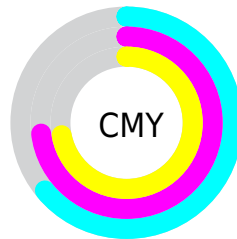


Cyan (0%)

Magenta (25%)

Yellow (22%)

Black (64%)



Cyan (64%)

Magenta (73%)

Yellow (72%)

Brightness & Saturation Gradients

These gradients show how the CIELCh color 32, 10.591, 10.975 changes by changing the brightness by 10 percent. The first figure shows a shift by +10% for each color and the second figure -10%.

Similar to the brightness gradients but the following saturation gradients show a change of the CIELCh color 32, 10.591, 10.975 by changing the saturation by 10% instead.

■ 32, 10.591, 10.975

■ 32, 10.591, 10.975

■ 100, 10.591,
10.975

■ 22, 10.591, 10.975

■ 52, 10.591, 10.975

■ 12, 10.591, 10.975

■ 62, 10.591, 10.975

■ 2, 10.591, 10.975

■ 72, 10.591, 10.975

■ 0, 10.591, 10.975

■ 82, 10.591, 10.975

■ 92, 10.591, 10.975

■ 32, 10.591, 10.975

■ 32, 10.591, 10.975

■ 29, 15.223, 12.247

■ 35, 6.164, 9.918

27, 20.011, 13.794

38, 1.970, 8.939

24, 24.867, 15.709

41, 1.989, 188.499

22, 29.667, 18.100

44, 5.721, 187.755

20, 34.264, 21.076

47, 9.240, 187.172

19, 38.520, 24.707

50, 12.564,
186.665

18, 42.338, 28.290

53, 15.711,
186.217

17, 44.113, 29.175

56, 18.700,
185.815

59, 21.546,
185.451

Harmonies

Complementary

The Complementary color scheme is a pair of colors which are on the opposite of each other on the color wheel.



32, 10.591, 10.975



37, 9.444, 186.827

Rectangle

The Rectangle color scheme consists of four colors that form a rectangle on the color wheel.



32, 10.591, 10.975



32, 10.591, 60.975



32, 10.591, 190.975



32, 10.591, 240.975

Sweetspot

The Sweet Spot groups the original color and five complimentary colors.



32, 10.590, 10.980



48, 3.509, 9.179



32, 16.754, 321.841



24, 2.300, 9.206



77, 0.009, 296.813



26, 0.004, 296.813

Same Dimension

The Same Dimension uses a secret algorithm to generate beautiful new colors.



32, 10.590, 10.980



40, 16.046, 11.715



34, 8.579, 57.738



17, 2.265, 9.334



21, 50.726, 31.278



50, 92.924, 34.964

Inverse Universe

The Inverse Universe completely reimagines the original color for something new.



32, 10.590, 10.980



40, 16.046, 11.715



35, 7.661, 242.556



17, 2.265, 9.334



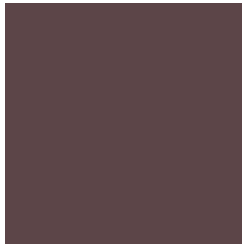
21, 50.726, 31.278



50, 92.924, 34.964

Previews

White Background



This preview shows how the CIE LCh color 32, 10.591, 10.975 looks on a white background.

Color Contrast Check

Large Text (above 18pt) WCAG AA ✓ Pass

Any Text WCAG AA ✓ Pass

Large Text (above 18pt) WCAG AAA ✓ Pass

Any Text WCAG AAA ✓ Pass

Black Background



This preview shows how the CIELCh color 32, 10.591, 10.975 looks on a black background.

Color Contrast Check

Large Text (above 18pt) WCAG AA × Fail

Any Text WCAG AA × Fail

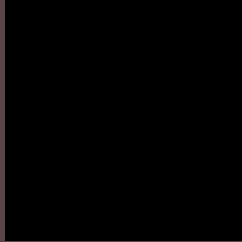
Large Text (above 18pt) WCAG AAA × Fail

Any Text WCAG AAA × Fail

If you want to check with other color combinations, try the [Color Contrast Checker](#).

CIELCh 32, 10.591, 10.975

Background



This preview shows how black text looks on a background with the CIELCh color 32, 10.591, 10.975.

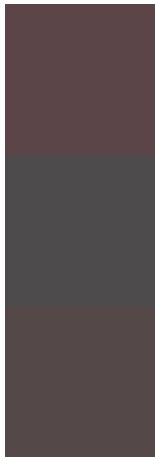


This preview shows how white text looks on a background with the CIELCh color 32, 10.591, 10.975.

Color Blindness Simulation

Color vision deficiency is a very complex topic, and I could not describe the different causes any better than Wikipedia does, so if you want to learn more, you should check out their [article about color blindness](#).

Dichromacy



Original Color

32, 10.591, 10.975

Protanopia

32, 1.085, 343.653

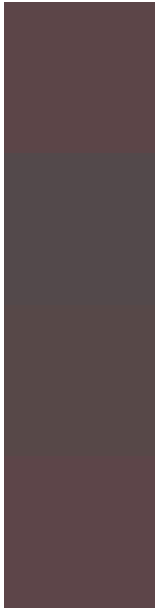
Deuteranopia

32, 4.987, 27.357



Tritanopia
32, 11.226, 5.128

Trichromacy



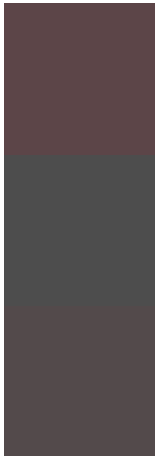
Original Color
32, 10.591, 10.975

Protanomaly
32, 4.609, 4.234

Deuteranomaly
32, 6.777, 20.454

Tritanomaly
32, 11.119, 8.284

Monochromacy



Original Color
32, 10.591, 10.975

Achromatopsia
33, 0.005, 296.813

Achromatomaly
32, 4.038, 11.025

CSS Examples

Text

The CSS property to change the color of the text to CIELCh 32, 10.591, 10.975 is called "color". The color property can be set on classes, ids or directly on the HTML element.

This example shows how text in the color `rgb(92, 69, 72)` looks like.

```
.text, #text, p{  
    color:rgb(92, 69, 72)  
}
```

If you want to add a text shadow in that color use the text-shadow property, you can generate a text shadow directly with our [CSS Text Shadow Generator](#).

Here you see how black text with a 4 pixel rgb(92, 69, 72) colored shadow looks like.

```
.shadow{ text-shadow: 4px 4px 2px rgb(92, 69, 72) }
```

Border

The CSS property to change the border of an element to CIELCh 32, 10.591, 10.975 is called "border". The border property can be set on classes, ids or directly on the HTML element.

This example shows the color as border, it can be applied via the CSS property "border" or "border-color".

```
.border, #border, table{ border:4px solid rgb(92, 69, 72) }
```

If only the border color should be changed use the property border-color.

```
.border{ border-color:rgb(92, 69, 72) }
```

If you want to add a box shadow in that color use:

Here you see how a box with a 4 pixel rgb(92, 69, 72) colored shadow looks like.

```
.boxshadow{ -moz-box-shadow:4px 4px 4px  
4px rgb(92, 69, 72); -webkit-box-  
shadow:4px 4px 4px 4px rgb(92, 69, 72);  
box-shadow:4px 4px 4px 4px rgb(92, 69, 72)  
}
```

Background

The CSS property to change the background color of an element to CIELCh 32, 10.591, 10.975 is called "background". The background property can be set on classes, ids or directly on the HTML element.

```
.background, #background, body{  
background: rgb(92, 69, 72) }
```

If only the background color should be changed can be used:

```
.background{ background-color: rgb(92, 69,  
72) }
```

This example shows the color as background, it is applied via the CSS property "background".

To optimize and compress your CSS code, you can use our [online CSS compressor and optimizer](#) based on csstidy. If you want to create a linear or radial gradient as background or border, check our [CSS Gradient Generator](#).

Hey! You found this booklet interesting? Support Converting Colors with the new Membership Option!

The pro membership hides all ads, plus gives you double the colors in the color bucket, and more awesome pro features!

[Learn more, Memberships starting at \\$2.50/m!](#)

**Follow me
on Twitter!**

@ConvertingColor