

Converting Colors

CIELCh(32, 11.344, 8.912)

Have a look what the booklet for
CIELCh(32, 11.344, 8.912) contains.

CIELCh(32, 11.119, 8.284)	3
<i>Conversions</i>	4
<i>Details</i>	6
<i>Harmonies</i>	11
<i>Previews</i>	20
<i>Color Blindness Simulation</i>	23
<i>CSS Examples</i>	26

Color

CIELCh(32, 11.119, 8.284)

Conversions

Conversions Part 1

Format	Color
Hex	5D4549
RGB	93, 69, 73
RGB Percent	36%, 27%, 29%
CMY	0.6348, 0.7290, 0.7133
CMYK	0.00, 0.26, 0.21, 0.63
HSL	350°, 15%, 32%
HSV	350°, 26%, 37%
XYZ	7.8668, 7.0852, 7.2751
YIQ	76.6320, 13.0200, 6.3320

Conversions

Conversions Part 2

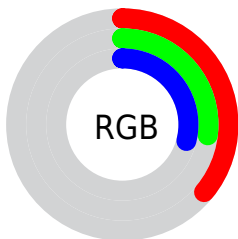
Format	Color
RYB	93, 69, 73
Decimal	6112585
CIELab	32.00, 11.00, 1.60
CIELCh	32, 11.119, 8.284
Yxy	7.0852, 0.3539, 0.3188
Android (android.graphics.Color)	4284302665 (0xFF5D4549)
YUV	76.6320, -1.7906, 14.3547
Hunter-Lab	26.6180, 6.1732, 2.4276

Details

The CIELCh color $[32, 11.119, 8.284]$ is a dark color, and the websafe version is hex `#663333`. A complement of this color would be $[38, 9.982, 183.751]$, and the grayscale version is $[33, 0.005, 296.813]$.

A 20% lighter version of the original color is $[52, 11.352, 9.014]$, and $[12, 10.737, 7.444]$ is the 20% darker color. If you saturate the color by 10%, you get $[29, 15.778, 9.599]$, and if you desaturate by 10%, it is $[35, 6.637, 7.184]$.

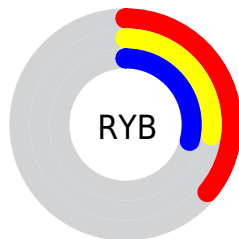
Distribution



Red (36%)

Green (27%)

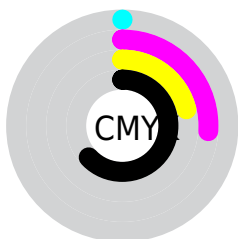
Blue (29%)



Red (36%)

Yellow (27%)

Blue (29%)

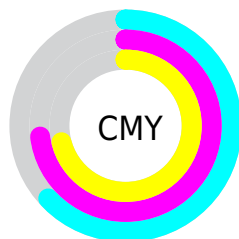


Cyan (0%)

Magenta (26%)

Yellow (21%)

Black (63%)



Cyan (63%)

Magenta (73%)

Yellow (71%)

Brightness & Saturation Gradients

These gradients show how the CIELCh color 32, 11.119, 8.284 changes by changing the brightness by 10 percent. The first figure shows a shift by +10% for each color and the second figure -10%.

Similar to the brightness gradients but the following saturation gradients show a change of the CIELCh color 32, 11.119, 8.284 by changing the saturation by 10% instead.

■ 32, 11.119, 8.284 ■ 32, 11.119, 8.284

■ 100, 11.119, 8.284 ■ 22, 11.119, 8.284

■ 52, 11.119, 8.284 ■ 12, 11.119, 8.284

■ 62, 11.119, 8.284 ■ 2, 11.119, 8.284

■ 72, 11.119, 8.284 ■ 0, 11.119, 8.284

■ 82, 11.119, 8.284

■ 92, 11.119, 8.284

■ 32, 11.119, 8.284 ■ 32, 11.119, 8.284

■ 29, 15.778, 9.599 ■ 35, 6.637, 7.184

■ 27, 20.557, 11.188 ■ 38, 2.368, 6.182

■ 24, 25.355, 13.146

■ 41, 1.679, 185.694

■ 22, 30.038, 15.582

■ 44, 5.508, 184.880

■ 20, 34.450, 18.615

■ 47, 9.131, 184.249

■ 19, 38.458, 22.333

■ 50, 12.562,
183.698

■ 18, 42.165, 26.280

■ 53, 15.819,
183.207

■ 17, 43.690, 27.323

■ 56, 18.917,
182.763

■ 59, 21.874,
182.359

Harmonies

Complementary

The Complementary color scheme is a pair of colors which are on the opposite of each other on the color wheel.



32, 11.119, 8.284



38, 9.982, 183.751

Rectangle

The Rectangle color scheme consists of four colors that form a rectangle on the color wheel.



32, 11.119, 8.284



32, 11.119, 58.284



32, 11.119, 188.284



32, 11.119, 238.284

Sweetspot

The Sweet Spot groups the original color and five complimentary colors.



32, 11.118, 8.289



47, 4.061, 6.434



32, 17.301, 320.881



24, 2.918, 6.544



77, 0.009, 296.813



26, 0.004, 296.813

Same Dimension

The Same Dimension uses a secret algorithm to generate beautiful new colors.



32, 11.118, 8.289



39, 16.692, 9.066



34, 8.970, 53.859



17, 2.287, 6.490



21, 49.728, 29.042



50, 90.726, 32.729

Inverse Universe

The Inverse Universe completely reimagines the original color for something new.



32, 11.118, 8.289



39, 16.692, 9.066



35, 7.879, 238.248



17, 2.287, 6.490



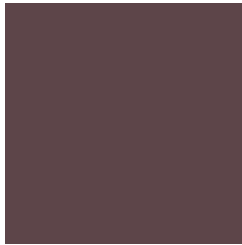
21, 49.728, 29.042



50, 90.726, 32.729

Previews

White Background



This preview shows how the CIE LCh color 32, 11.119, 8.284 looks on a white background.

Color Contrast Check

Large Text (above 18pt) WCAG AA ✓ Pass

Any Text WCAG AA ✓ Pass

Large Text (above 18pt) WCAG AAA ✓ Pass

Any Text WCAG AAA ✓ Pass

Black Background



This preview shows how the CIE LCh color 32, 11.119, 8.284 looks on a black background.

Color Contrast Check

Large Text (above 18pt) WCAG AA × Fail

Any Text WCAG AA × Fail

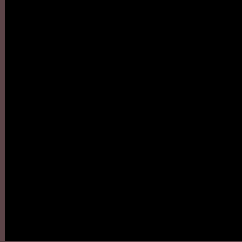
Large Text (above 18pt) WCAG AAA × Fail

Any Text WCAG AAA × Fail

If you want to check with other color combinations, try the [Color Contrast Checker](#).

CIELCh 32, 11.119, 8.284

Background



This preview shows how black text looks on a background with the CIELCh color 32, 11.119, 8.284.

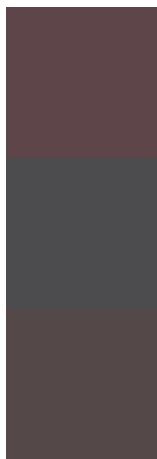


This preview shows how white text looks on a background with the CIELCh color 32, 11.119, 8.284.

Color Blindness Simulation

Color vision deficiency is a very complex topic, and I could not describe the different causes any better than Wikipedia does, so if you want to learn more, you should check out their [article about color blindness](#).

Dichromacy



Original Color

32, 11.119, 8.284

Protanopia

32, 1.348, 309.126

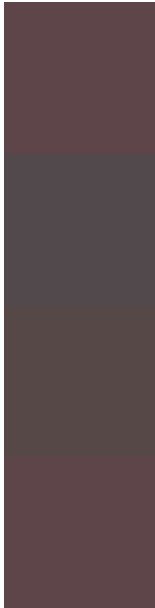
Deuteranopia

32, 4.987, 27.357



Tritanopia
32, 11.226, 5.128

Trichromacy



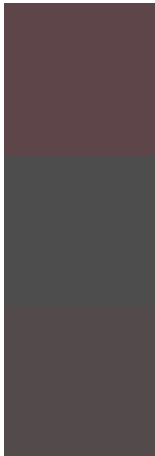
Original Color
32, 11.119, 8.284

Protanomaly
32, 4.400, 354.581

Deuteranomaly
32, 6.777, 20.454

Tritanomaly
32, 11.226, 5.128

Monochromacy



Original Color
32, 11.119, 8.284

Achromatopsia
33, 0.005, 296.813

Achromatomaly
32, 4.170, 2.446

CSS Examples

Text

The CSS property to change the color of the text to CIELCh 32, 11.119, 8.284 is called "color". The color property can be set on classes, ids or directly on the HTML element.

This example shows how text in the color `rgb(93, 69, 73)` looks like.

```
.text, #text, p{  
    color:rgb(93, 69, 73)  
}
```

If you want to add a text shadow in that color use the text-shadow property, you can generate a text shadow directly with our [CSS Text Shadow Generator](#).

Here you see how black text with a 4 pixel rgb(93, 69, 73) colored shadow looks like.

```
.shadow{ text-shadow: 4px 4px 2px rgb(93, 69, 73) }
```

Border

The CSS property to change the border of an element to CIELCh 32, 11.119, 8.284 is called "border". The border property can be set on classes, ids or directly on the HTML element.

This example shows the color as border, it can be applied via the CSS property "border" or "border-color".

```
.border, #border, table{ border:4px solid rgb(93, 69, 73) }
```

If only the border color should be changed use the property border-color.

```
.border{ border-color:rgb(93, 69, 73) }
```

If you want to add a box shadow in that color use:

Here you see how a box with a 4 pixel rgb(93, 69, 73) colored shadow looks like.

```
.boxshadow{ -moz-box-shadow:4px 4px 4px  
4px rgb(93, 69, 73); -webkit-box-  
shadow:4px 4px 4px 4px rgb(93, 69, 73);  
box-shadow:4px 4px 4px 4px rgb(93, 69, 73)  
}
```

Background

The CSS property to change the background color of an element to CIELCh 32, 11.119, 8.284 is called "background". The background property can be set on classes, ids or directly on the HTML element.

```
.background, #background, body{  
background: rgb(93, 69, 73) }
```

If only the background color should be changed can be used:

```
.background{ background-color: rgb(93, 69,  
73) }
```

This example shows the color as background, it is applied via the CSS property "background".

To optimize and compress your CSS code, you can use our [online CSS compressor and optimizer](#) based on csstidy. If you want to create a linear or radial gradient as background or border, check our [CSS Gradient Generator](#).

Hey! You found this booklet interesting? Support Converting Colors with the new Membership Option!

The pro membership hides all ads, plus gives you double the colors in the color bucket, and more awesome pro features!

[Learn more, Memberships starting at \\$2.50/m!](#)

**Follow me
on Twitter!**

@ConvertingColor