

Converting Colors

CIELCh(32, 12.760, 19.875)

Have a look what the booklet for
CIELCh(32, 12.760, 19.875) contains.

CIELCh(32, 12.935, 18.825)	3
<i>Conversions</i>	4
<i>Details</i>	6
<i>Harmonies</i>	11
<i>Previews</i>	20
<i>Color Blindness Simulation</i>	23
<i>CSS Examples</i>	26

Color

CIELCh(32, 12.935, 18.825)

Conversions

Conversions Part 1

Format	Color
Hex	604445
RGB	96, 68, 69
RGB Percent	38%, 27%, 27%
CMY	0.6228, 0.7326, 0.7287
CMYK	0.00, 0.29, 0.28, 0.62
HSL	358°, 17%, 32%
HSV	358°, 29%, 38%
XYZ	8.0019, 7.0852, 6.6052
YIQ	76.4860, 16.3670, 6.2470

Conversions

Conversions Part 2

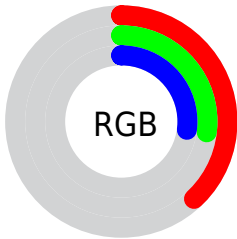
Format	Color
RYB	96, 68, 69
Decimal	6308933
CIELab	32.00, 12.24, 4.17
CIElCh	32, 12.935, 18.825
Yxy	7.0852, 0.3689, 0.3266
Android (android.graphics.Color)	4284499013 (0xFF604445)
YUV	76.4860, -3.6906, 17.1138
Hunter-Lab	26.6180, 7.0790, 3.9199

Details

The CIELCh color $32, 12.935, 18.825$ is a dark color, and the websafe version is hex 663333 . A complement of this color would be $39, 10.903, 194.800$, and the grayscale version is $33, 0.005, 296.813$.

A 20% lighter version of the original color is $52, 12.963, 18.353$, and $12, 12.939, 20.320$ is the 20% darker color. If you saturate the color by 10%, you get $29, 17.928, 20.098$, and if you desaturate by 10%, it is $35, 8.212, 17.815$.

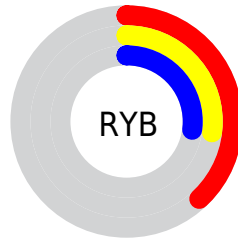
Distribution



Red (38%)

Green (27%)

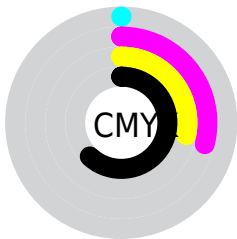
Blue (27%)



Red (38%)

Yellow (27%)

Blue (27%)

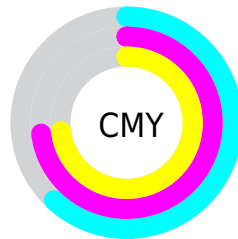


Cyan (0%)

Magenta (29%)

Yellow (28%)

Black (62%)



Cyan (62%)

Magenta (73%)

Yellow (73%)

Brightness & Saturation Gradients

These gradients show how the CIELCh color 32, 12.935, 18.825 changes by changing the brightness by 10 percent. The first figure shows a shift by +10% for each color and the second figure -10%.

Similar to the brightness gradients but the following saturation gradients show a change of the CIELCh color 32, 12.935, 18.825 by changing the saturation by 10% instead.

■ 32, 12.935, 18.825

■ 32, 12.935, 18.825

■ 100, 12.935,
18.825

■ 22, 12.935, 18.825

■ 52, 12.935, 18.825

■ 12, 12.935, 18.825

■ 62, 12.935, 18.825

■ 2, 12.935, 18.825

■ 72, 12.935, 18.825

■ 0, 12.935, 18.825

■ 82, 12.935, 18.825

■ 92, 12.935, 18.825

■ 32, 12.935, 18.825

■ 32, 12.935, 18.825

■ 29, 17.928, 20.098

■ 35, 8.212, 17.815

■ 27, 23.143, 21.700

■ 38, 3.784, 16.965

■ 24, 28.486, 23.731

■ 41, 0.352, 197.312

■ 22, 33.827, 26.282

■ 44, 4.211, 195.939

■ 20, 39.004, 29.399

■ 47, 7.815, 195.457

■ 19, 43.524, 32.377

■ 51, 11.188,
195.070

■ 18, 46.990, 33.670

■ 54, 14.354,
194.744

■ 18, 47.296, 33.749

■ 57, 17.337,
194.465

■ 60, 20.157,
194.224

Harmonies

Complementary

The Complementary color scheme is a pair of colors which are on the opposite of each other on the color wheel.



32, 12.935, 18.825



39, 10.903, 194.800

Rectangle

The Rectangle color scheme consists of four colors that form a rectangle on the color wheel.



32, 12.935, 18.825



32, 12.935, 68.825



32, 12.935, 198.825



32, 12.935, 248.825

Sweetspot

The Sweet Spot groups the original color and five complimentary colors.



32, 12.934, 18.830



49, 4.634, 16.978



33, 20.705, 324.480



25, 3.257, 17.064



77, 0.009, 296.813



27, 0.004, 296.813

Same Dimension

The Same Dimension uses a secret algorithm to generate beautiful new colors.



32, 12.934, 18.830



39, 19.708, 19.678



36, 10.667, 66.701



18, 2.340, 16.946



22, 53.957, 35.704



50, 98.384, 38.958

Inverse Universe

The Inverse Universe completely reimagines the original color for something new.



32, 12.934, 18.830



39, 19.708, 19.678



35, 9.675, 253.777



18, 2.340, 16.946



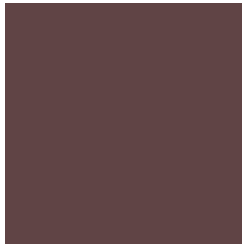
22, 53.957, 35.704



50, 98.384, 38.958

Previews

White Background



This preview shows how the CIE LCh color 32, 12.935, 18.825 looks on a white background.

Color Contrast Check

Large Text (above 18pt) WCAG AA ✓ Pass

Any Text WCAG AA ✓ Pass

Large Text (above 18pt) WCAG AAA ✓ Pass

Any Text WCAG AAA ✓ Pass

Black Background



This preview shows how the CIE LCh color 32, 12.935, 18.825 looks on a black background.

Color Contrast Check

Large Text (above 18pt) WCAG AA × Fail

Any Text WCAG AA × Fail

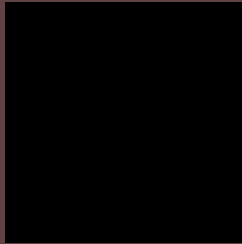
Large Text (above 18pt) WCAG AAA × Fail

Any Text WCAG AAA × Fail

If you want to check with other color combinations, try the [Color Contrast Checker](#).

CIELCh 32, 12.935, 18.825

Background



This preview shows how black text looks on a background with the CIELCh color 32, 12.935, 18.825.

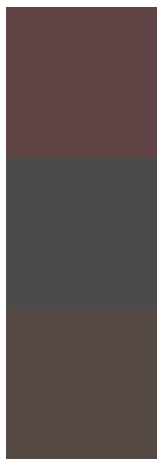


This preview shows how white text looks on a background with the CIELCh color 32, 12.935, 18.825.

Color Blindness Simulation

Color vision deficiency is a very complex topic, and I could not describe the different causes any better than Wikipedia does, so if you want to learn more, you should check out their [article about color blindness](#).

Dichromacy



Original Color

32, 12.935, 18.825

Protanopia

32, 1.532, 74.733

Deuteranopia

32, 6.359, 49.690



Tritanopia
32, 13.482, 8.375

Trichromacy



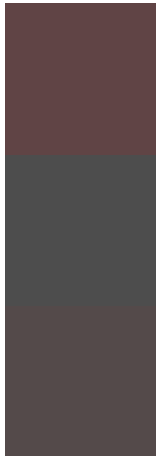
Original Color
32, 12.935, 18.825

Protanomaly
32, 4.987, 27.357

Deuteranomaly
32, 8.536, 33.371

Tritanomaly
32, 13.417, 11.014

Monochromacy



Original Color
32, 12.935, 18.825

Achromatopsia
33, 0.005, 296.813

Achromatomaly
32, 4.457, 20.044

CSS Examples

Text

The CSS property to change the color of the text to CIELCh 32, 12.935, 18.825 is called "color". The color property can be set on classes, ids or directly on the HTML element.

This example shows how text in the color `rgb(96, 68, 69)` looks like.

```
.text, #text, p{  
    color:rgb(96, 68, 69)  
}
```

If you want to add a text shadow in that color use the text-shadow property, you can generate a text shadow directly with our [CSS Text Shadow Generator](#).

Here you see how black text with a 4 pixel rgb(96, 68, 69) colored shadow looks like.

```
.shadow{ text-shadow: 4px 4px 2px rgb(96, 68, 69) }
```

Border

The CSS property to change the border of an element to CIELCh 32, 12.935, 18.825 is called "border". The border property can be set on classes, ids or directly on the HTML element.

This example shows the color as border, it can be applied via the CSS property "border" or "border-color".

```
.border, #border, table{ border:4px solid rgb(96, 68, 69) }
```

If only the border color should be changed use the property `border-color`.

```
.border{ border-color:rgb(96, 68, 69) }
```

If you want to add a box shadow in that color use:

Here you see how a box with a 4 pixel `rgb(96, 68, 69)` colored shadow looks like.

```
.boxshadow{ -moz-box-shadow:4px 4px 4px  
4px rgb(96, 68, 69); -webkit-box-  
shadow:4px 4px 4px 4px rgb(96, 68, 69);  
box-shadow:4px 4px 4px 4px rgb(96, 68, 69)  
}
```

Background

The CSS property to change the background color of an element to CIELCh 32, 12.935, 18.825 is called "background". The background property can be set on classes, ids or directly on the HTML element.

```
.background, #background, body{  
background: rgb(96, 68, 69) }
```

If only the background color should be changed can be used:

```
.background{ background-color: rgb(96, 68,  
69) }
```

This example shows the color as background, it is applied via the CSS property "background".

To optimize and compress your CSS code, you can use our [online CSS compressor and optimizer](#) based on csstidy. If you want to create a linear or radial gradient as background or border, check our [CSS Gradient Generator](#).

Hey! You found this booklet interesting? Support Converting Colors with the new Membership Option!

The pro membership hides all ads, plus gives you double the colors in the color bucket, and more awesome pro features!

[Learn more, Memberships starting at \\$2.50/m!](#)

**Follow me
on Twitter!**

@ConvertingColor