

Converting Colors

CIELCh(34, 13.526, 63.618)

Have a look what the booklet for
CIELCh(34, 13.526, 63.618) contains.

CIELCh(34, 13.526, 63.618)	3
<i>Conversions</i>	4
<i>Details</i>	6
<i>Harmonies</i>	11
<i>Previews</i>	20
<i>Color Blindness Simulation</i>	23
<i>CSS Examples</i>	26

Color

CIELCh(34, 13.526, 63.618)

Conversions

Conversions Part 1

Format	Color
Hex	604C3D
RGB	96, 76, 61
RGB Percent	38%, 30%, 24%
CMY	0.6232, 0.7017, 0.7605
CMYK	0.00, 0.21, 0.36, 0.62
HSL	26°, 22%, 31%
HSV	26°, 36%, 38%
XYZ	8.2663, 8.0082, 5.5353
YIQ	80.2700, 16.7350, -0.4250

Conversions

Conversions Part 2

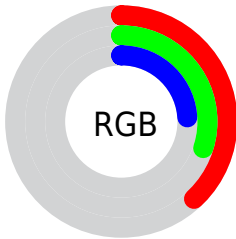
Format	Color
RYB	96, 87, 61
Decimal	6310973
CIELab	34.00, 6.01, 12.12
CIELCh	34, 13.526, 63.618
Yxy	8.0082, 0.3790, 0.3672
Android (android.graphics.Color)	4284501053 (0xFF604C3D)
YUV	80.2700, -9.5001, 13.7952
Hunter-Lab	28.2988, 2.6184, 8.2119

Details

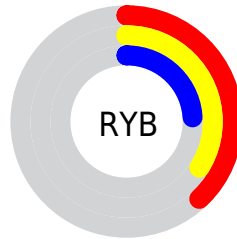
The CIELCh color **34, 13.526, 63.618** is a dark color, and the websafe version is hex **666666**. A complement of this color would be **33, 11.773, 252.460**, and the grayscale version is **34, 0.005, 296.813**.

A 20% lighter version of the original color is **54, 13.657, 65.291**, and **14, 13.570, 62.224** is the 20% darker color. If you saturate the color by 10%, you get **32, 17.728, 62.654**, and if you desaturate by 10%, it is **36, 9.542, 64.614**.

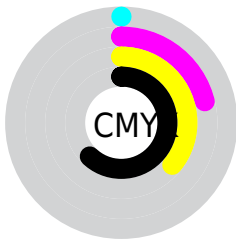
Distribution



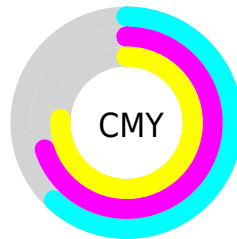
- Red (38%)
- Green (30%)
- Blue (24%)



- Red (38%)
- Yellow (34%)
- Blue (24%)



- Cyan (0%)
- Magenta (21%)
- Yellow (36%)
- Black (62%)



- Cyan (62%)
- Magenta (70%)
- Yellow (76%)

Brightness & Saturation Gradients

These gradients show how the CIELCh color 34, 13.526, 63.618 changes by changing the brightness by 10 percent. The first figure shows a shift by +10% for each color and the second figure -10%.

Similar to the brightness gradients but the following saturation gradients show a change of the CIELCh color 34, 13.526, 63.618 by changing the saturation by 10% instead.

■ 34, 13.526, 63.618

■ 34, 13.526, 63.618

■ 100, 13.526,
63.618

■ 24, 13.526, 63.618

■ 54, 13.526, 63.618

■ 14, 13.526, 63.618

■ 64, 13.526, 63.618

■ 4, 13.526, 63.618

■ 74, 13.526, 63.618

■ 0, 13.526, 63.618

■ 84, 13.526, 63.618

■ 94, 13.526, 63.618

■ 34, 13.526, 63.618

■ 34, 13.526, 63.618

■ 32, 17.728, 62.654

■ 36, 9.542, 64.614

■ 31, 22.140, 61.701

■ 38, 5.771, 65.607

■ 29, 26.722, 60.753

■ 40, 2.198, 66.553

■ 27, 31.373, 59.761

■ 41, 1.193, 247.888

■ 26, 35.886, 58.609

■ 43, 4.421, 248.737

■ 24, 39.749, 57.021

■ 45, 7.503, 249.697

■ 24, 41.088, 56.531

■ 47, 10.455,
250.647

■ 49, 13.293,
251.574

■ 51, 16.029,
252.473

Harmonies

Complementary

The Complementary color scheme is a pair of colors which are on the opposite of each other on the color wheel.



34, 13.526, 63.618



33, 11.773, 252.460

Rectangle

The Rectangle color scheme consists of four colors that form a rectangle on the color wheel.



34, 13.526, 63.618



34, 13.526, 113.618



34, 13.526, 243.618



34, 13.526, 293.618

Sweetspot

The Sweet Spot groups the original color and five complimentary colors.



34, 13.526, 63.625



50, 4.728, 66.105



30, 19.739, 342.326



25, 3.210, 66.021



77, 0.009, 296.813



27, 0.004, 296.813

Same Dimension

The Same Dimension uses a secret algorithm to generate beautiful new colors.



34, 13.526, 63.625



42, 20.789, 62.760



39, 19.379, 103.050



19, 1.943, 66.336



28, 47.074, 56.576



60, 84.532, 54.442

Inverse Universe

The Inverse Universe completely reimagines the original color for something new.



33, 11.773, 252.460



41, 17.399, 254.292



28, 20.770, 291.156



19, 1.889, 248.367



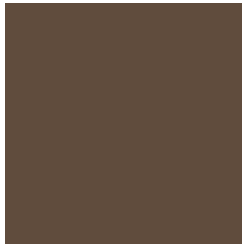
26, 32.814, 273.694



56, 60.460, 276.991

Previews

White Background



This preview shows how the CIELCh color 34, 13.526, 63.618 looks on a white background.

Color Contrast Check

Large Text (above 18pt) WCAG AA ✓ Pass

Any Text WCAG AA ✓ Pass

Large Text (above 18pt) WCAG AAA ✓ Pass

Any Text WCAG AAA ✓ Pass

Black Background



This preview shows how the CIE LCh color 34, 13.526, 63.618 looks on a black background.

Color Contrast Check

Large Text (above 18pt) WCAG AA × Fail

Any Text WCAG AA × Fail

Large Text (above 18pt) WCAG AAA × Fail

Any Text WCAG AAA × Fail

If you want to check with other color combinations, try the [Color Contrast Checker](#).

CIELCh 34, 13.526, 63.618

Background



This preview shows how black text looks on a background with the CIELCh color 34, 13.526, 63.618.

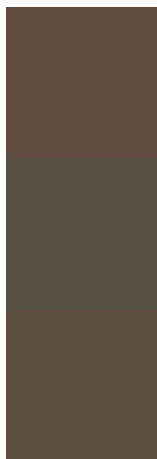


This preview shows how white text looks on a background with the CIELCh color 34, 13.526, 63.618.

Color Blindness Simulation

Color vision deficiency is a very complex topic, and I could not describe the different causes any better than Wikipedia does, so if you want to learn more, you should check out their [article about color blindness](#).

Dichromacy



Original Color

34, 13.526, 63.618

Protanopia

34, 10.839, 95.904

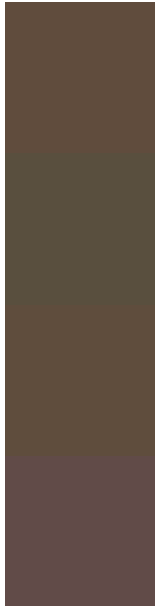
Deuteranopia

34, 12.970, 69.788



Tritanopia
34, 11.097, 4.991

Trichromacy



Original Color

34, 13.526, 63.618

Protanomaly

34, 11.628, 84.415

Deuteranomaly

34, 13.290, 68.202

Tritanomaly

34, 10.285, 31.287

Monochromacy



Original Color

34, 13.526, 63.618

Achromatopsia

34, 0.005, 296.813

Achromatomaly

34, 4.891, 69.487

CSS Examples

Text

The CSS property to change the color of the text to CIELCh 34, 13.526, 63.618 is called "color". The color property can be set on classes, ids or directly on the HTML element.

This example shows how text in the color `rgb(96, 76, 61)` looks like.

```
.text, #text, p{  
    color:rgb(96, 76, 61)  
}
```

If you want to add a text shadow in that color use the text-shadow property, you can generate a text shadow directly with our [CSS Text Shadow Generator](#).

Here you see how black text with a 4 pixel rgb(96, 76, 61) colored shadow looks like.

```
.shadow{ text-shadow: 4px 4px 2px rgb(96, 76, 61) }
```

Border

The CSS property to change the border of an element to CIELCh 34, 13.526, 63.618 is called "border". The border property can be set on classes, ids or directly on the HTML element.

This example shows the color as border, it can be applied via the CSS property "border" or "border-color".

```
.border, #border, table{ border:4px solid rgb(96, 76, 61) }
```

If only the border color should be changed use the property `border-color`.

```
.border{ border-color:rgb(96, 76, 61) }
```

If you want to add a box shadow in that color use:

Here you see how a box with a 4 pixel `rgb(96, 76, 61)` colored shadow looks like.

```
.boxshadow{ -moz-box-shadow:4px 4px 4px  
4px rgb(96, 76, 61); -webkit-box-  
shadow:4px 4px 4px 4px rgb(96, 76, 61);  
box-shadow:4px 4px 4px 4px rgb(96, 76, 61)  
}
```

Background

The CSS property to change the background color of an element to CIELCh 34, 13.526, 63.618 is called "background". The background property can be set on classes, ids or directly on the HTML element.

```
.background, #background, body{  
background: rgb(96, 76, 61) }
```

If only the background color should be changed can be used:

```
.background{ background-color: rgb(96, 76,  
61) }
```

This example shows the color as background, it is applied via the CSS property "background".

To optimize and compress your CSS code, you can use our [online CSS compressor and optimizer](#) based on csstidy. If you want to create a linear or radial gradient as background or border, check our [CSS Gradient Generator](#).

Hey! You found this booklet interesting? Support Converting Colors with the new Membership Option!

The pro membership hides all ads, plus gives you double the colors in the color bucket, and more awesome pro features!

[Learn more, Memberships starting at \\$2.50/m!](#)

**Follow me
on Twitter!**

@ConvertingColor