

Converting Colors

CIELCh(34, 14.447, 9.567)

Have a look what the booklet for
CIELCh(34, 14.447, 9.567) contains.

CIELCh(34, 14.249, 9.278)	3
<i>Conversions</i>	4
<i>Details</i>	6
<i>Harmonies</i>	11
<i>Previews</i>	20
<i>Color Blindness Simulation</i>	23
<i>CSS Examples</i>	26

Color

CIELCh(34, 14.249, 9.278)

Conversions

Conversions Part 1

Format	Color
Hex	67484D
RGB	103, 72, 77
RGB Percent	40%, 28%, 30%
CMY	0.5970, 0.7185, 0.6989
CMYK	0.00, 0.30, 0.25, 0.60
HSL	350°, 18%, 34%
HSV	350°, 30%, 40%
XYZ	9.2009, 8.0082, 8.0409
YIQ	81.8390, 16.8710, 8.1270

Conversions

Conversions Part 2

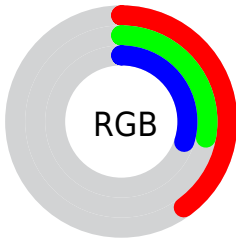
Format	Color
RYB	103, 72, 77
Decimal	6768717
CIELab	34.00, 14.06, 2.30
CIElCh	34, 14.249, 9.278
Yxy	8.0082, 0.3644, 0.3172
Android (android.graphics.Color)	4284958797 (0xFF67484D)
YUV	81.8390, -2.3856, 18.5582
Hunter-Lab	28.2988, 8.5134, 2.9623

Details

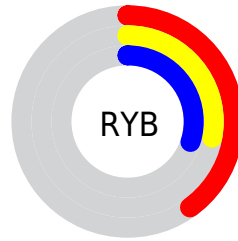
The CIELCh color $34, 14.249, 9.278$ is a dark color, and the websafe version is hex 663333 . A complement of this color would be $41, 12.493, 183.766$, and the grayscale version is $35, 0.005, 296.813$.

A 20% lighter version of the original color is $54, 14.230, 9.481$, and $14, 14.217, 9.640$ is the 20% darker color. If you saturate the color by 10%, you get $31, 19.379, 10.733$, and if you desaturate by 10%, it is $37, 9.291, 8.078$.

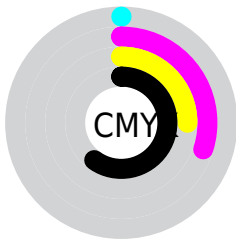
Distribution



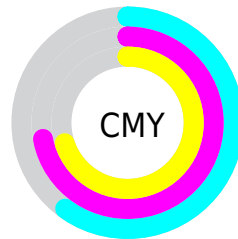
- Red (40%)
- Green (28%)
- Blue (30%)



- Red (40%)
- Yellow (28%)
- Blue (30%)



- Cyan (0%)
- Magenta (30%)
- Yellow (25%)
- Black (60%)



- Cyan (60%)
- Magenta (72%)
- Yellow (70%)

Brightness & Saturation Gradients

These gradients show how the CIELCh color 34, 14.249, 9.278 changes by changing the brightness by 10 percent. The first figure shows a shift by +10% for each color and the second figure -10%.

Similar to the brightness gradients but the following saturation gradients show a change of the CIELCh color 34, 14.249, 9.278 by changing the saturation by 10% instead.

 34, 14.249, 9.278  34, 14.249, 9.278

 100, 14.249, 9.278  24, 14.249, 9.278


 54, 14.249, 9.278  14, 14.249, 9.278

 64, 14.249, 9.278  4, 14.249, 9.278

 74, 14.249, 9.278  0, 14.249, 9.278

 84, 14.249, 9.278

 94, 14.249, 9.278

 34, 14.249, 9.278  34, 14.249, 9.278

 31, 19.379, 10.733  37, 9.291, 8.078

 28, 24.599, 12.513  40, 4.557, 7.042

■ 26, 29.776, 14.728

■ 43, 0.067, 1.454

■ 24, 34.748, 17.496

■ 47, 4.179, 185.601

■ 22, 39.348, 20.930

■ 50, 8.190, 184.920

■ 21, 43.461, 25.068

■ 53, 11.983,
184.338

■ 20, 47.388, 28.789

■ 57, 15.575,
183.823

■ 60, 18.986,
183.362

■ 63, 22.235,
182.944

Harmonies

Complementary

The Complementary color scheme is a pair of colors which are on the opposite of each other on the color wheel.



34, 14.249, 9.278



41, 12.493, 183.766

Rectangle

The Rectangle color scheme consists of four colors that form a rectangle on the color wheel.



34, 14.249, 9.278



34, 14.249, 59.278



34, 14.249, 189.278



34, 14.249, 239.278

Sweetspot

The Sweet Spot groups the original color and five complimentary colors.



34, 14.248, 9.282



52, 4.971, 6.953



34, 21.973, 321.080



26, 3.436, 7.059



78, 0.009, 296.813



28, 0.004, 296.813

Same Dimension

The Same Dimension uses a secret algorithm to generate beautiful new colors.



34, 14.248, 9.282



42, 21.293, 10.245



37, 11.565, 53.565



19, 2.497, 6.919



23, 51.680, 29.750



51, 92.585, 33.137

Inverse Universe

The Inverse Universe completely reimagines the original color for something new.



34, 14.248, 9.282



42, 21.293, 10.245



38, 9.887, 238.869



19, 2.497, 6.919



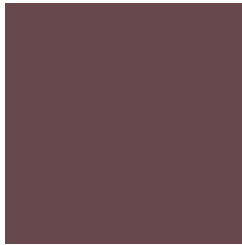
23, 51.680, 29.750



51, 92.585, 33.137

Previews

White Background



This preview shows how the CIE LCh color 34, 14.249, 9.278 looks on a white background.

Color Contrast Check

Large Text (above 18pt) WCAG AA ✓ Pass

Any Text WCAG AA ✓ Pass

Large Text (above 18pt) WCAG AAA ✓ Pass

Any Text WCAG AAA ✓ Pass

Black Background



This preview shows how the CIELCh color 34, 14.249, 9.278 looks on a black background.

Color Contrast Check

Large Text (above 18pt) WCAG AA × Fail

Any Text WCAG AA × Fail

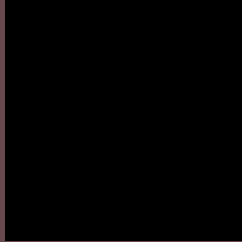
Large Text (above 18pt) WCAG AAA × Fail

Any Text WCAG AAA × Fail

If you want to check with other color combinations, try the [Color Contrast Checker](#).

CIELCh 34, 14.249, 9.278

Background



This preview shows how black text looks on a background with the CIELCh color 34, 14.249, 9.278.

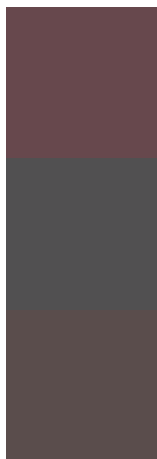


This preview shows how white text looks on a background with the CIELCh color 34, 14.249, 9.278.

Color Blindness Simulation

Color vision deficiency is a very complex topic, and I could not describe the different causes any better than Wikipedia does, so if you want to learn more, you should check out their [article about color blindness](#).

Dichromacy



Original Color


34, 14.249, 9.278

Protanopia

34, 0.768, 324.328

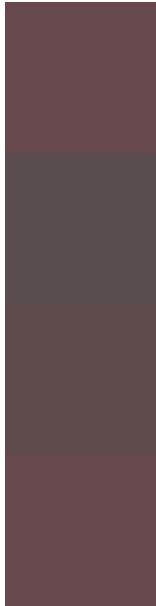
Deuteranopia

34, 5.842, 26.340



Tritanopia
34, 14.249, 9.278

Trichromacy



Original Color

34, 14.249, 9.278

Protanomaly

34, 5.430, 6.936

Deuteranomaly

34, 9.007, 16.856

Tritanomaly

34, 14.249, 9.278

Monochromacy



Original Color

34, 14.249, 9.278

Achromatopsia

35, 0.005, 296.813

Achromatomaly

34, 5.418, 6.923

CSS Examples

Text

The CSS property to change the color of the text to CIELCh 34, 14.249, 9.278 is called "color". The color property can be set on classes, ids or directly on the HTML element.

This example shows how text in the color `rgb(103, 72, 77)` looks like.

```
.text, #text, p{  
    color:rgb(103, 72, 77)  
}
```

If you want to add a text shadow in that color use the text-shadow property, you can generate a text shadow directly with our [CSS Text Shadow Generator](#).

Here you see how black text with a 4 pixel rgb(103, 72, 77) colored shadow looks like.

```
.shadow{ text-shadow: 4px 4px 2px rgb(103, 72, 77) }
```

Border

The CSS property to change the border of an element to CIELCh 34, 14.249, 9.278 is called "border". The border property can be set on classes, ids or directly on the HTML element.

This example shows the color as border, it can be applied via the CSS property "border" or "border-color".

```
.border, #border, table{ border:4px solid rgb(103, 72, 77) }
```

If only the border color should be changed use the property `border-color`.

```
.border{ border-color:rgb(103, 72, 77) }
```

If you want to add a box shadow in that color use:

Here you see how a box with a 4 pixel `rgb(103, 72, 77)` colored shadow looks like.

```
.boxshadow{ -moz-box-shadow:4px 4px 4px  
4px rgb(103, 72, 77); -webkit-box-  
shadow:4px 4px 4px 4px rgb(103, 72, 77);  
box-shadow:4px 4px 4px 4px rgb(103, 72,  
77) }
```

Background

The CSS property to change the background color of an element to CIELCh 34, 14.249, 9.278 is called "background". The background property can be set on classes, ids or directly on the HTML element.

```
.background, #background, body{  
background: rgb(103, 72, 77) }
```

If only the background color should be changed can be used:

```
.background{ background-color: rgb(103, 72,  
77) }
```

This example shows the color as background, it is applied via the CSS property "background".

To optimize and compress your CSS code, you can use our [online CSS compressor and optimizer](#) based on csstidy. If you want to create a linear or radial gradient as background or border, check our [CSS Gradient Generator](#).

Hey! You found this booklet interesting? Support Converting Colors with the new Membership Option!

The pro membership hides all ads, plus gives you double the colors in the color bucket, and more awesome pro features!

[Learn more, Memberships starting at \\$2.50/m!](#)

**Follow me
on Twitter!**

@ConvertingColor