

Converting Colors

CIELCh(34, 17.038, 7.020)

Have a look what the booklet for
CIELCh(34, 17.038, 7.020) contains.

CIELCh(34, 17.136, 7.797)	3
<i>Conversions</i>	4
<i>Details</i>	6
<i>Harmonies</i>	11
<i>Previews</i>	20
<i>Color Blindness Simulation</i>	23
<i>CSS Examples</i>	26

Color

CIELCh(34, 17.136, 7.797)

Conversions

Conversions Part 1

Format	Color
Hex	6B464D
RGB	107, 70, 77
RGB Percent	42%, 27%, 30%
CMY	0.5811, 0.7261, 0.6987
CMYK	0.00, 0.35, 0.28, 0.58
HSL	349°, 21%, 35%
HSV	349°, 35%, 42%
XYZ	9.5558, 8.0082, 8.0330
YIQ	81.8610, 19.8050, 10.0210

Conversions

Conversions Part 2

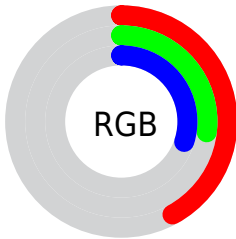
Format	Color
R_{YB}	107, 70, 77
Decimal	7030349
CIE _{Lab}	34.00, 16.98, 2.32
CIE _{LCh}	34, 17.136, 7.797
Yxy	8.0082, 0.3733, 0.3129
Android (android.graphics.Color)	4285220429 (0xFF6B464D)
YUV	81.8610, -2.3965, 22.0469
Hunter-Lab	28.2988, 10.7523, 2.9788

Details

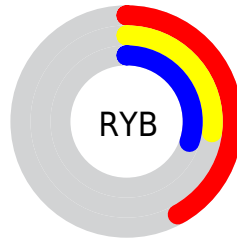
The CIELCh color $[34, 17.136, 7.797]$ is a dark color, and the websafe version is hex 663333 . A complement of this color would be $[42, 14.873, 181.060]$, and the grayscale version is $[35, 0.005, 296.813]$.

A 20% lighter version of the original color is $[54, 16.893, 7.745]$, and $[14, 16.867, 8.217]$ is the 20% darker color. If you saturate the color by 10%, you get $[31, 22.458, 9.400]$, and if you desaturate by 10%, it is $[37, 11.929, 6.478]$.

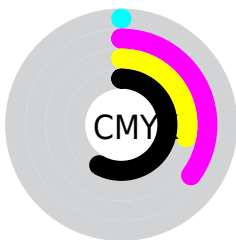
Distribution



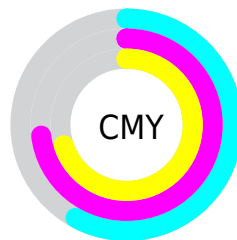
- Red (42%)
- Green (27%)
- Blue (30%)



- Red (42%)
- Yellow (27%)
- Blue (30%)



- Cyan (0%)
- Magenta (35%)
- Yellow (28%)
- Black (58%)



- Cyan (58%)
- Magenta (73%)
- Yellow (70%)

Brightness & Saturation Gradients

These gradients show how the CIELCh color 34, 17.136, 7.797 changes by changing the brightness by 10 percent. The first figure shows a shift by +10% for each color and the second figure -10%.

Similar to the brightness gradients but the following saturation gradients show a change of the CIELCh color 34, 17.136, 7.797 by changing the saturation by 10% instead.

■ 34, 17.136, 7.797 ■ 34, 17.136, 7.797

■ 100, 17.136, 7.797 ■ 24, 17.136, 7.797

■ 54, 17.136, 7.797 ■ 14, 17.136, 7.797

■ 64, 17.136, 7.797 ■ 4, 17.136, 7.797

■ 74, 17.136, 7.797 ■ 0, 17.136, 7.797

■ 84, 17.136, 7.797

■ 94, 17.136, 7.797

■ 34, 17.136, 7.797 ■ 34, 17.136, 7.797

■ 31, 22.458, 9.400 ■ 37, 11.929, 6.478

■ 28, 27.781, 11.369 ■ 40, 6.916, 5.358

■ 26, 32.944, 13.824

■ 44, 2.132, 4.316

■ 24, 37.763, 16.891

■ 47, 2.410, 183.794

■ 22, 42.081, 20.678

■ 50, 6.713, 182.999

■ 21, 45.920, 25.065

■ 54, 10.788,
182.353

■ 21, 48.095, 27.204

■ 57, 14.652,
181.784

■ 61, 18.324,
181.274

■ 64, 21.822,
180.812

Harmonies

Complementary

The Complementary color scheme is a pair of colors which are on the opposite of each other on the color wheel.



34, 17.136, 7.797



42, 14.873, 181.060

Rectangle

The Rectangle color scheme consists of four colors that form a rectangle on the color wheel.



34, 17.136, 7.797



34, 17.136, 57.797



34, 17.136, 187.797



34, 17.136, 237.797

Sweetspot

The Sweet Spot groups the original color and five complimentary colors.



34, 17.135, 7.800



53, 5.762, 4.912



34, 25.863, 320.252



26, 3.912, 5.014



79, 0.010, 296.813



29, 0.005, 296.813

Same Dimension

The Same Dimension uses a secret algorithm to generate beautiful new colors.



34, 17.135, 7.800



41, 25.980, 9.139



37, 14.036, 49.654



21, 2.626, 4.780



23, 51.664, 27.848



51, 91.607, 31.272

Inverse Universe

The Inverse Universe completely reimagines the original color for something new.



34, 17.135, 7.800



41, 25.980, 9.139



39, 11.500, 234.907



21, 2.626, 4.780



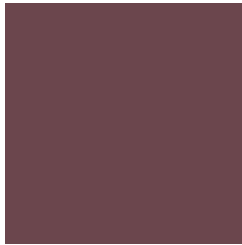
23, 51.664, 27.848



51, 91.607, 31.272

Previews

White Background



This preview shows how the CIELCh color 34, 17.136, 7.797 looks on a white background.

Color Contrast Check

Large Text (above 18pt) WCAG AA ✓ Pass

Any Text WCAG AA ✓ Pass

Large Text (above 18pt) WCAG AAA ✓ Pass

Any Text WCAG AAA ✓ Pass

Black Background



This preview shows how the CIELCh color 34, 17.136, 7.797 looks on a black background.

Color Contrast Check

Large Text (above 18pt) WCAG AA × Fail

Any Text WCAG AA × Fail

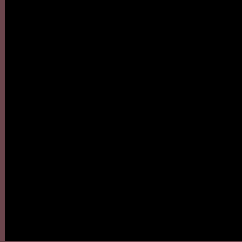
Large Text (above 18pt) WCAG AAA × Fail

Any Text WCAG AAA × Fail

If you want to check with other color combinations, try the [Color Contrast Checker](#).

CIELCh 34, 17.136, 7.797

Background



This preview shows how black text looks on a background with the CIELCh color 34, 17.136, 7.797.



This preview shows how white text looks on a background with the CIELCh color 34, 17.136, 7.797.

Color Blindness Simulation

Color vision deficiency is a very complex topic, and I could not describe the different causes any better than Wikipedia does, so if you want to learn more, you should check out their [article about color blindness](#).

Dichromacy



Original Color

34, 17.136, 7.797

Protanopia

34, 1.937, 303.209

Deuteranopia

34, 5.705, 39.178



Tritanopia
34, 17.030, 11.915

Trichromacy



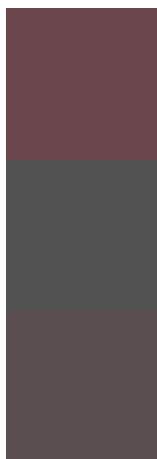
Original Color
34, 17.136, 7.797

Protanomaly
34, 6.876, 353.466

Deuteranomaly
34, 9.466, 17.127

Tritanomaly
34, 17.071, 9.849

Monochromacy



Original Color
34, 17.136, 7.797

Achromatopsia
35, 0.005, 296.813

Achromatomaly
35, 5.853, 8.012

CSS Examples

Text

The CSS property to change the color of the text to CIELCh 34, 17.136, 7.797 is called "color". The color property can be set on classes, ids or directly on the HTML element.

This example shows how text in the color `rgb(107, 70, 77)` looks like.

```
.text, #text, p{  
    color:rgb(107, 70, 77)  
}
```

If you want to add a text shadow in that color use the text-shadow property, you can generate a text shadow directly with our [CSS Text Shadow Generator](#).

Here you see how black text with a 4 pixel rgb(107, 70, 77) colored shadow looks like.

```
.shadow{ text-shadow: 4px 4px 2px rgb(107, 70, 77) }
```

Border

The CSS property to change the border of an element to CIELCh 34, 17.136, 7.797 is called "border". The border property can be set on classes, ids or directly on the HTML element.

This example shows the color as border, it can be applied via the CSS property "border" or "border-color".

```
.border, #border, table{ border:4px solid rgb(107, 70, 77) }
```

If only the border color should be changed use the property border-color.

```
.border{ border-color:rgb(107, 70, 77) }
```

If you want to add a box shadow in that color use:

Here you see how a box with a 4 pixel rgb(107, 70, 77) colored shadow looks like.

```
.boxshadow{ -moz-box-shadow:4px 4px 4px  
4px rgb(107, 70, 77); -webkit-box-  
shadow:4px 4px 4px 4px rgb(107, 70, 77);  
box-shadow:4px 4px 4px 4px rgb(107, 70,  
77) }
```

Background

The CSS property to change the background color of an element to CIELCh 34, 17.136, 7.797 is called "background". The background property can be set on classes, ids or directly on the HTML element.

```
.background, #background, body{  
background: rgb(107, 70, 77) }
```

If only the background color should be changed can be used:

```
.background{ background-color: rgb(107, 70,  
77) }
```

This example shows the color as background, it is applied via the CSS property "background".

To optimize and compress your CSS code, you can use our [online CSS compressor and optimizer](#) based on csstidy. If you want to create a linear or radial gradient as background or border, check our [CSS Gradient Generator](#).

Hey! You found this booklet interesting? Support Converting Colors with the new Membership Option!

The pro membership hides all ads, plus gives you double the colors in the color bucket, and more awesome pro features!

[Learn more, Memberships starting at \\$2.50/m!](#)

**Follow me
on Twitter!**

@ConvertingColor