

Converting Colors

CIELCh(35, 11.884, 66.573)

Have a look what the booklet for
CIELCh(35, 11.884, 66.573) contains.

CIELCh(35, 11.915, 66.542)	3
<i>Conversions</i>	4
<i>Details</i>	6
<i>Harmonies</i>	11
<i>Previews</i>	20
<i>Color Blindness Simulation</i>	23
<i>CSS Examples</i>	26

Color

CIELCh(35, 11.915, 66.542)

Conversions

Conversions Part 1

Format	Color
Hex	604F41
RGB	96, 79, 65
RGB Percent	38%, 31%, 25%
CMY	0.6228, 0.6895, 0.7444
CMYK	0.00, 0.18, 0.32, 0.62
HSL	27°, 19%, 32%
HSV	27°, 32%, 38%
XYZ	8.6117, 8.4984, 6.2138
YIQ	82.4870, 14.6260, -0.7500

Conversions

Conversions Part 2

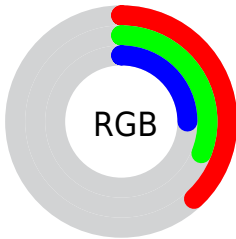
Format	Color
RYB	96, 91, 65
Decimal	6311745
CIELab	35.00, 4.74, 10.93
CIELCh	35, 11.915, 66.542
Yxy	8.4984, 0.3692, 0.3644
Android (android.graphics.Color)	4284501825 (0xFF604F41)
YUV	82.4870, -8.6211, 11.8509
Hunter-Lab	29.1520, 1.7140, 7.7687

Details

The CIELCh color **35, 11.915, 66.542** is a dark color, and the websafe version is hex **666666**. A complement of this color would be **34, 10.689, 254.524**, and the grayscale version is **35, 0.005, 296.813**.

A 20% lighter version of the original color is **55, 11.812, 66.241**, and **15, 12.199, 67.836** is the 20% darker color. If you saturate the color by 10%, you get **33, 16.025, 65.496**, and if you desaturate by 10%, it is **37, 8.008, 67.607**.

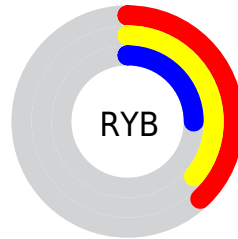
Distribution



Red (38%)

Green (31%)

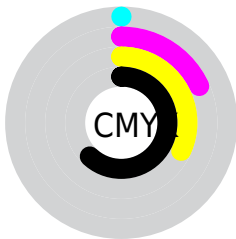
Blue (25%)



Red (38%)

Yellow (36%)

Blue (25%)

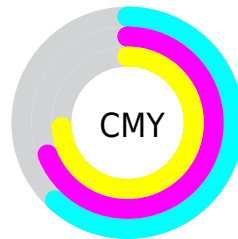


Cyan (0%)

Magenta (18%)

Yellow (32%)

Black (62%)



Cyan (62%)

Magenta (69%)

Yellow (74%)

Brightness & Saturation Gradients

These gradients show how the CIELCh color 35, 11.915, 66.542 changes by changing the brightness by 10 percent. The first figure shows a shift by +10% for each color and the second figure -10%.

Similar to the brightness gradients but the following saturation gradients show a change of the CIELCh color 35, 11.915, 66.542 by changing the saturation by 10% instead.

■ 35, 11.915, 66.542

■ 35, 11.915, 66.542

■ 100, 11.915,
66.542

■ 25, 11.915, 66.542

■ 55, 11.915, 66.542

■ 15, 11.915, 66.542

■ 65, 11.915, 66.542

■ 5, 11.915, 66.542

■ 75, 11.915, 66.542

■ 0, 11.915, 66.542

■ 85, 11.915, 66.542

■ 95, 11.915, 66.542

■ 35, 11.915, 66.542

■ 35, 11.915, 66.542

■ 33, 16.025, 65.496

■ 37, 8.008, 67.607

■ 32, 20.334, 64.451

■ 39, 4.296, 68.651

■ 30, 24.814, 63.406

■ 40, 0.765, 69.459

■ 28, 29.392, 62.329

■ 42, 2.601, 250.913

■ 27, 33.905, 61.138

■ 44, 5.820, 251.893

■ 26, 37.969, 59.603

■ 46, 8.906, 252.884

■ 25, 40.860, 58.422

■ 48, 11.875,
253.852

■ 50, 14.740,
254.791

■ 52, 17.513,
255.697

Harmonies

Complementary

The Complementary color scheme is a pair of colors which are on the opposite of each other on the color wheel.



35, 11.915, 66.542



34, 10.689, 254.524

Rectangle

The Rectangle color scheme consists of four colors that form a rectangle on the color wheel.



35, 11.915, 66.542



35, 11.915, 116.542



35, 11.915, 246.542



35, 11.915, 296.542

Sweetspot

The Sweet Spot groups the original color and five complimentary colors.



35, 11.915, 66.550



50, 4.330, 68.848



32, 17.122, 343.679



25, 2.985, 68.750



77, 0.009, 296.813



27, 0.004, 296.813

Same Dimension

The Same Dimension uses a secret algorithm to generate beautiful new colors.



35, 11.915, 66.550



44, 18.249, 65.713



40, 17.752, 105.067



19, 1.963, 68.988



29, 46.687, 58.371



61, 83.518, 56.116

Inverse Universe

The Inverse Universe completely reimagines the original color for something new.



34, 10.689, 254.524



42, 15.877, 256.060



29, 18.952, 291.918



19, 1.914, 251.090



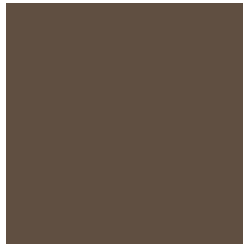
25, 34.323, 276.532



55, 63.429, 279.748

Previews

White Background



This preview shows how the CIELCh color 35, 11.915, 66.542 looks on a white background.

Color Contrast Check

Large Text (above 18pt) WCAG AA ✓ Pass

Any Text WCAG AA ✓ Pass

Large Text (above 18pt) WCAG AAA ✓ Pass

Any Text WCAG AAA ✓ Pass

Black Background



This preview shows how the CIELCh color 35, 11.915, 66.542 looks on a black background.

Color Contrast Check

Large Text (above 18pt) WCAG AA × Fail

Any Text WCAG AA × Fail

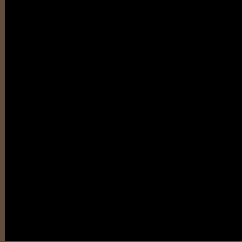
Large Text (above 18pt) WCAG AAA × Fail

Any Text WCAG AAA × Fail

If you want to check with other color combinations, try the [Color Contrast Checker](#).

CIELCh 35, 11.915, 66.542

Background



This preview shows how black text looks on a background with the CIELCh color 35, 11.915, 66.542.

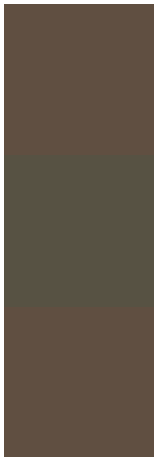


This preview shows how white text looks on a background with the CIELCh color 35, 11.915, 66.542.

Color Blindness Simulation

Color vision deficiency is a very complex topic, and I could not describe the different causes any better than Wikipedia does, so if you want to learn more, you should check out their [article about color blindness](#).

Dichromacy



Original Color

35, 11.915, 66.542

Protanopia

35, 9.587, 94.688

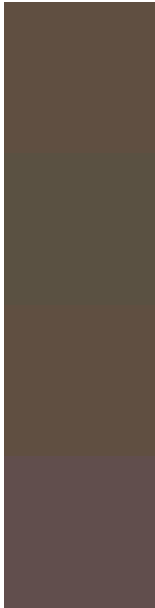
Deuteranopia

35, 11.915, 66.542



Tritanopia
35, 9.917, 358.986

Trichromacy



Original Color

35, 11.915, 66.542

Protanomaly

35, 10.232, 84.459

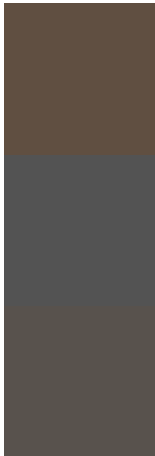
Deuteranomaly

35, 11.915, 66.542

Tritanomaly

35, 8.567, 24.783

Monochromacy



Original Color

35, 11.915, 66.542

Achromatopsia

35, 0.005, 296.813

Achromatomaly

35, 4.082, 68.968

CSS Examples

Text

The CSS property to change the color of the text to CIELCh 35, 11.915, 66.542 is called "color". The color property can be set on classes, ids or directly on the HTML element.

This example shows how text in the color `rgb(96, 79, 65)` looks like.

```
.text, #text, p{  
    color:rgb(96, 79, 65)  
}
```

If you want to add a text shadow in that color use the text-shadow property, you can generate a text shadow directly with our [CSS Text Shadow Generator](#).

Here you see how black text with a 4 pixel rgb(96, 79, 65) colored shadow looks like.

```
.shadow{ text-shadow: 4px 4px 2px rgb(96, 79, 65) }
```

Border

The CSS property to change the border of an element to CIELCh 35, 11.915, 66.542 is called "border". The border property can be set on classes, ids or directly on the HTML element.

This example shows the color as border, it can be applied via the CSS property "border" or "border-color".

```
.border, #border, table{ border:4px solid rgb(96, 79, 65) }
```

If only the border color should be changed use the property `border-color`.

```
.border{ border-color:rgb(96, 79, 65) }
```

If you want to add a box shadow in that color use:

Here you see how a box with a 4 pixel `rgb(96, 79, 65)` colored shadow looks like.

```
.boxshadow{ -moz-box-shadow:4px 4px 4px  
4px rgb(96, 79, 65); -webkit-box-  
shadow:4px 4px 4px 4px rgb(96, 79, 65);  
box-shadow:4px 4px 4px 4px rgb(96, 79, 65)  
}
```

Background

The CSS property to change the background color of an element to CIELCh 35, 11.915, 66.542 is called "background". The background property can be set on classes, ids or directly on the HTML element.

```
.background, #background, body{  
background: rgb(96, 79, 65) }
```

If only the background color should be changed can be used:

```
.background{ background-color: rgb(96, 79,  
65) }
```

This example shows the color as background, it is applied via the CSS property "background".

To optimize and compress your CSS code, you can use our [online CSS compressor and optimizer](#) based on csstidy. If you want to create a linear or radial gradient as background or border, check our [CSS Gradient Generator](#).

Hey! You found this booklet interesting? Support Converting Colors with the new Membership Option!

The pro membership hides all ads, plus gives you double the colors in the color bucket, and more awesome pro features!

[Learn more, Memberships starting at \\$2.50/m!](#)

**Follow me
on Twitter!**

@ConvertingColor