

Converting Colors

CIELCh(35, 14.506, 5.875)

Have a look what the booklet for
CIELCh(35, 14.506, 5.875) contains.

CIELCh(35, 14.269, 6.761)	3
<i>Conversions</i>	4
<i>Details</i>	6
<i>Harmonies</i>	11
<i>Previews</i>	20
<i>Color Blindness Simulation</i>	23
<i>CSS Examples</i>	26

Color

CIELCh(35, 14.269, 6.761)

Conversions

Conversions Part 1

Format	Color
Hex	694A50
RGB	105, 74, 80
RGB Percent	41%, 29%, 31%
CMY	0.5879, 0.7095, 0.6859
CMYK	0.00, 0.30, 0.24, 0.59
HSL	348°, 17%, 35%
HSV	348°, 30%, 41%
XYZ	9.7423, 8.4984, 8.7330
YIQ	83.9530, 16.5500, 8.4380

Conversions

Conversions Part 2

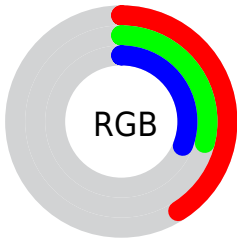
Format	Color
R_{YB}	105, 74, 80
Decimal	6900304
CIE _{Lab}	35.00, 14.17, 1.68
CIE _{LCh}	35, 14.269, 6.761
Yxy	8.4984, 0.3612, 0.3151
Android (android.graphics.Color)	4285090384 (0xFF694A50)
YUV	83.9530, -1.9488, 18.4582
Hunter-Lab	29.1520, 8.6369, 2.6450

Details

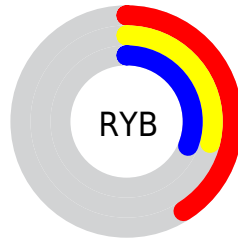
The CIELCh color **35, 14.269, 6.761** is a dark color, and the websafe version is hex **663333**. A complement of this color would be **42, 12.691, 181.212**, and the grayscale version is **36, 0.005, 296.813**.

A 20% lighter version of the original color is **55, 14.272, 7.193**, and **15, 14.175, 6.630** is the 20% darker color. If you saturate the color by 10%, you get **32, 19.469, 8.207**, and if you desaturate by 10%, it is **38, 9.221, 5.557**.

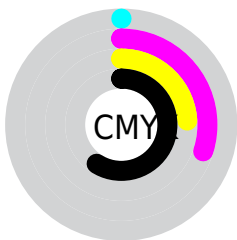
Distribution



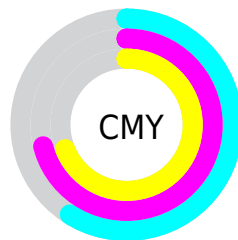
- Red (41%)
- Green (29%)
- Blue (31%)



- Red (41%)
- Yellow (29%)
- Blue (31%)



- Cyan (0%)
- Magenta (30%)
- Yellow (24%)
- Black (59%)




- Cyan (59%)
- Magenta (71%)
- Yellow (69%)

Brightness & Saturation Gradients

These gradients show how the CIELCh color 35, 14.269, 6.761 changes by changing the brightness by 10 percent. The first figure shows a shift by +10% for each color and the second figure -10%.

Similar to the brightness gradients but the following saturation gradients show a change of the CIELCh color 35, 14.269, 6.761 by changing the saturation by 10% instead.

 35, 14.269, 6.761  35, 14.269, 6.761

 100, 14.269, 6.761  25, 14.269, 6.761

 55, 14.269, 6.761  15, 14.269, 6.761

 65, 14.269, 6.761  5, 14.269, 6.761

 75, 14.269, 6.761  0, 14.269, 6.761

 85, 14.269, 6.761

 95, 14.269, 6.761

 35, 14.269, 6.761  35, 14.269, 6.761

 32, 19.469, 8.207  38, 9.221, 5.557

 29, 24.733, 9.966  41, 4.384, 4.508

■ 27, 29.920, 12.144

■ 45, 0.221, 185.160

■ 24, 34.857, 14.864

■ 48, 4.589, 183.026

■ 23, 39.367, 18.252

■ 51, 8.728, 182.326

■ 21, 43.332, 22.381

■ 55, 12.651,
181.721

■ 20, 47.177, 26.573

■ 58, 16.377,
181.181

■ 20, 47.381, 26.758

■ 61, 19.922,
180.693

■ 65, 23.306,
180.250

Harmonies

Complementary

The Complementary color scheme is a pair of colors which are on the opposite of each other on the color wheel.



35, 14.269, 6.761



42, 12.691, 181.212

Rectangle

The Rectangle color scheme consists of four colors that form a rectangle on the color wheel.



35, 14.269, 6.761



35, 14.269, 56.761



35, 14.269, 186.761



35, 14.269, 236.761

Sweetspot

The Sweet Spot groups the original color and five complimentary colors.



35, 14.268, 6.765



54, 5.180, 4.484



35, 21.726, 320.039



27, 3.582, 4.595



79, 0.010, 296.813



29, 0.005, 296.813

Same Dimension

The Same Dimension uses a secret algorithm to generate beautiful new colors.



35, 14.268, 6.765



44, 21.403, 7.671



37, 11.578, 49.879



21, 2.630, 4.456



23, 51.531, 27.523



51, 91.344, 30.967

Inverse Universe

The Inverse Universe completely reimagines the original color for something new.



35, 14.268, 6.765



44, 21.403, 7.671



39, 9.811, 234.235



21, 2.630, 4.456



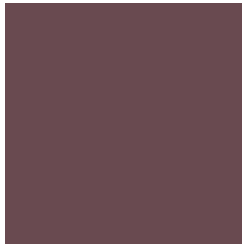
23, 51.531, 27.523



51, 91.344, 30.967

Previews

White Background



This preview shows how the CIE LCh color 35, 14.269, 6.761 looks on a white background.

Color Contrast Check

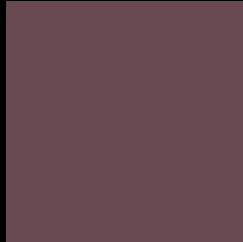
Large Text (above 18pt) WCAG AA ✓ Pass

Any Text WCAG AA ✓ Pass

Large Text (above 18pt) WCAG AAA ✓ Pass

Any Text WCAG AAA ✓ Pass

Black Background



This preview shows how the CIE LCh color 35, 14.269, 6.761 looks on a black background.

Color Contrast Check

Large Text (above 18pt) WCAG AA × Fail

Any Text WCAG AA × Fail

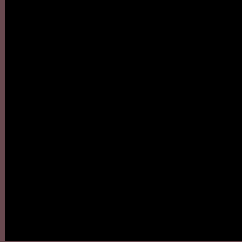
Large Text (above 18pt) WCAG AAA × Fail

Any Text WCAG AAA × Fail

If you want to check with other color combinations, try the [Color Contrast Checker](#).

CIELCh 35, 14.269, 6.761

Background



This preview shows how black text looks on a background with the CIELCh color 35, 14.269, 6.761.



This preview shows how white text looks on a background with the CIELCh color 35, 14.269, 6.761.

Color Blindness Simulation

Color vision deficiency is a very complex topic, and I could not describe the different causes any better than Wikipedia does, so if you want to learn more, you should check out their [article about color blindness](#).

Dichromacy



Original Color

35, 14.269, 6.761

Protanopia

35, 1.929, 303.205

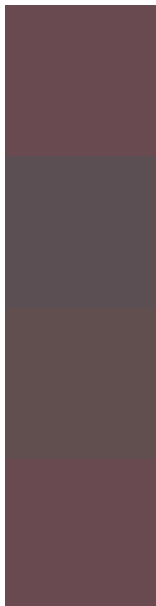
Deuteranopia

35, 5.349, 26.769



Tritanopia
35, 14.269, 6.761

Trichromacy



Original Color

35, 14.269, 6.761

Protanomaly

35, 5.786, 354.814

Deuteranomaly

35, 8.486, 16.512

Tritanomaly

35, 14.269, 6.761

Monochromacy



Original Color

35, 14.269, 6.761

Achromatopsia

36, 0.005, 296.813

Achromatomaly

35, 5.552, 0.640

CSS Examples

Text

The CSS property to change the color of the text to CIELCh 35, 14.269, 6.761 is called "color". The color property can be set on classes, ids or directly on the HTML element.

This example shows how text in the color `rgb(105, 74, 80)` looks like.

```
.text, #text, p{  
    color:rgb(105, 74, 80)  
}
```

If you want to add a text shadow in that color use the text-shadow property, you can generate a text shadow directly with our [CSS Text Shadow Generator](#).

Here you see how black text with a 4 pixel rgb(105, 74, 80) colored shadow looks like.

```
.shadow{ text-shadow: 4px 4px 2px rgb(105, 74, 80) }
```

Border

The CSS property to change the border of an element to CIELCh 35, 14.269, 6.761 is called "border". The border property can be set on classes, ids or directly on the HTML element.

This example shows the color as border, it can be applied via the CSS property "border" or "border-color".

```
.border, #border, table{ border:4px solid rgb(105, 74, 80) }
```

If only the border color should be changed use the property `border-color`.

```
.border{ border-color:rgb(105, 74, 80) }
```

If you want to add a box shadow in that color use:

Here you see how a box with a 4 pixel `rgb(105, 74, 80)` colored shadow looks like.

```
.boxshadow{ -moz-box-shadow:4px 4px 4px  
4px rgb(105, 74, 80); -webkit-box-  
shadow:4px 4px 4px 4px rgb(105, 74, 80);  
box-shadow:4px 4px 4px 4px rgb(105, 74,  
80) }
```

Background

The CSS property to change the background color of an element to CIELCh 35, 14.269, 6.761 is called "background". The background property can be set on classes, ids or directly on the HTML element.

```
.background, #background, body{  
background: rgb(105, 74, 80) }
```

If only the background color should be changed can be used:

```
.background{ background-color: rgb(105, 74,  
80) }
```

This example shows the color as background, it is applied via the CSS property "background".

To optimize and compress your CSS code, you can use our [online CSS compressor and optimizer](#) based on csstidy. If you want to create a linear or radial gradient as background or border, check our [CSS Gradient Generator](#).

Hey! You found this booklet interesting? Support Converting Colors with the new Membership Option!

The pro membership hides all ads, plus gives you double the colors in the color bucket, and more awesome pro features!

[Learn more, Memberships starting at \\$2.50/m!](#)

**Follow me
on Twitter!**

@ConvertingColor