

Converting Colors

CIELCh(35, 15.041, 14.387)

Have a look what the booklet for
CIELCh(35, 15.041, 14.387) contains.

CIELCh(35, 15.019, 14.810)	3
<i>Conversions</i>	4
<i>Details</i>	6
<i>Harmonies</i>	11
<i>Previews</i>	20
<i>Color Blindness Simulation</i>	23
<i>CSS Examples</i>	26

Color

CIELCh(35, 15.019, 14.810)

Conversions

Conversions Part 1

Format	Color
Hex	6B4A4D
RGB	107, 74, 77
RGB Percent	42%, 29%, 30%
CMY	0.5816, 0.7109, 0.6991
CMYK	0.00, 0.31, 0.28, 0.58
HSL	355°, 18%, 35%
HSV	355°, 31%, 42%
XYZ	9.7861, 8.4984, 8.0934
YIQ	84.2090, 18.7050, 7.9290

Conversions

Conversions Part 2

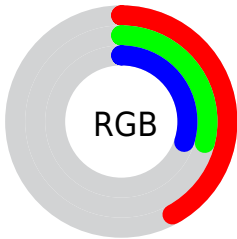
Format	Color
R_{YB}	107, 74, 77
Decimal	7031373
CIE _{Lab}	35.00, 14.52, 3.84
CIE _{LCh}	35, 15.019, 14.810
Yxy	8.4984, 0.3710, 0.3222
Android (android.graphics.Color)	4285221453 (0xFF6B4A4D)
YUV	84.2090, -3.5540, 19.9877
Hunter-Lab	29.1520, 8.9052, 3.9458

Details

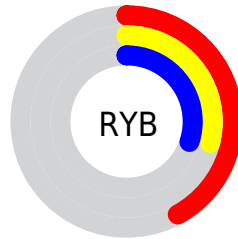
The CIELCh color **35, 15.019, 14.810** is a dark color, and the websafe version is hex **663333**. A complement of this color would be **43, 12.753, 189.702**, and the grayscale version is **36, 0.005, 296.813**.

A 20% lighter version of the original color is **55, 14.925, 14.529**, and **15, 14.606, 15.529** is the 20% darker color. If you saturate the color by 10%, you get **32, 20.411, 16.249**, and if you desaturate by 10%, it is **38, 9.863, 13.649**.

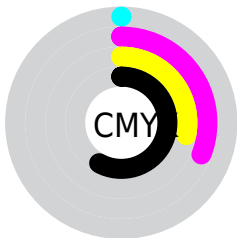
Distribution



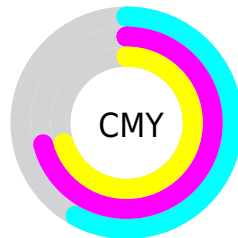
- Red (42%)
- Green (29%)
- Blue (30%)



- Red (42%)
- Yellow (29%)
- Blue (30%)



- Cyan (0%)
- Magenta (31%)
- Yellow (28%)
- Black (58%)



- Cyan (58%)
- Magenta (71%)
- Yellow (70%)

Brightness & Saturation Gradients

These gradients show how the CIELCh color 35, 15.019, 14.810 changes by changing the brightness by 10 percent. The first figure shows a shift by +10% for each color and the second figure -10%.

Similar to the brightness gradients but the following saturation gradients show a change of the CIELCh color 35, 15.019, 14.810 by changing the saturation by 10% instead.

■ 35, 15.019, 14.810

■ 35, 15.019, 14.810

■ 100, 15.019,
14.810

■ 25, 15.019, 14.810

■ 55, 15.019, 14.810

■ 15, 15.019, 14.810

■ 65, 15.019, 14.810

■ 5, 15.019, 14.810

■ 75, 15.019, 14.810

■ 0, 15.019, 14.810

■ 85, 15.019, 14.810

■ 95, 15.019, 14.810

■ 35, 15.019, 14.810

■ 35, 15.019, 14.810

■ 32, 20.411, 16.249

■ 38, 9.863, 13.649

■ 29, 25.965, 18.042

■ 41, 4.988, 12.671

■ 27, 31.556, 20.298

■ 45, 0.403, 11.111

■ 24, 37.023, 23.125

■ 48, 3.897, 191.382

■ 23, 42.197, 26.590

■ 52, 7.930, 190.773

■ 21, 46.911, 30.606

■ 55, 11.718,
190.271

■ 21, 50.498, 32.851

■ 58, 15.285,
189.838

■ 62, 18.655,
189.458

■ 65, 21.847,
189.120

Harmonies

Complementary

The Complementary color scheme is a pair of colors which are on the opposite of each other on the color wheel.



35, 15.019, 14.810



43, 12.753, 189.702

Rectangle

The Rectangle color scheme consists of four colors that form a rectangle on the color wheel.



35, 15.019, 14.810



35, 15.019, 64.810



35, 15.019, 194.810



35, 15.019, 244.810

Sweetspot

The Sweet Spot groups the original color and five complimentary colors.



35, 15.018, 14.814



54, 5.048, 12.518



36, 23.621, 323.116



27, 3.493, 12.619



79, 0.010, 296.813



29, 0.005, 296.813

Same Dimension

The Same Dimension uses a secret algorithm to generate beautiful new colors.



35, 15.018, 14.814



43, 22.596, 15.799



39, 12.265, 60.960



21, 2.562, 12.492



23, 54.636, 33.888



51, 97.530, 37.034

Inverse Universe

The Inverse Universe completely reimagines the original color for something new.



35, 15.018, 14.814



43, 22.596, 15.799



39, 10.756, 247.891



21, 2.562, 12.492



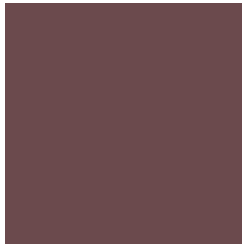
23, 54.636, 33.888



51, 97.530, 37.034

Previews

White Background



This preview shows how the CIELCh color 35, 15.019, 14.810 looks on a white background.

Color Contrast Check

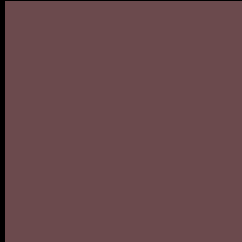
Large Text (above 18pt) WCAG AA ✓ Pass

Any Text WCAG AA ✓ Pass

Large Text (above 18pt) WCAG AAA ✓ Pass

Any Text WCAG AAA ✓ Pass

Black Background



This preview shows how the CIE LCh color 35, 15.019, 14.810 looks on a black background.

Color Contrast Check

Large Text (above 18pt) WCAG AA × Fail

Any Text WCAG AA × Fail

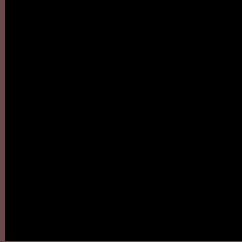
Large Text (above 18pt) WCAG AAA × Fail

Any Text WCAG AAA × Fail

If you want to check with other color combinations, try the [Color Contrast Checker](#).

CIELCh 35, 15.019, 14.810

Background



This preview shows how black text looks on a background with the CIELCh color 35, 15.019, 14.810.



This preview shows how white text looks on a background with the CIELCh color 35, 15.019, 14.810.

Color Blindness Simulation

Color vision deficiency is a very complex topic, and I could not describe the different causes any better than Wikipedia does, so if you want to learn more, you should check out their [article about color blindness](#).

Dichromacy



Original Color


35, 15.019, 14.810

Protanopia

35, 1.058, 55.193

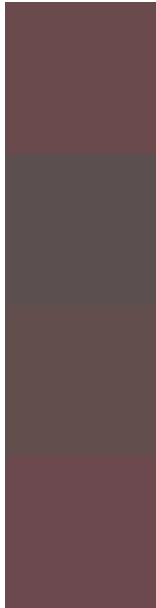
Deuteranopia

35, 6.354, 43.045



Tritanopia
35, 15.624, 8.366

Trichromacy



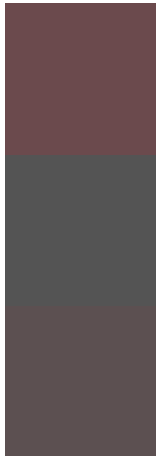
Original Color
35, 15.019, 14.810

Protanomaly
35, 5.754, 20.222

Deuteranomaly
35, 9.136, 28.464

Tritanomaly
35, 15.561, 10.610

Monochromacy



Original Color
35, 15.019, 14.810

Achromatopsia
36, 0.005, 296.813

Achromatomaly
35, 5.305, 13.454

CSS Examples

Text

The CSS property to change the color of the text to CIELCh 35, 15.019, 14.810 is called "color". The color property can be set on classes, ids or directly on the HTML element.

This example shows how text in the color `rgb(107, 74, 77)` looks like.

```
.text, #text, p{  
    color:rgb(107, 74, 77)  
}
```

If you want to add a text shadow in that color use the text-shadow property, you can generate a text shadow directly with our [CSS Text Shadow Generator](#).

Here you see how black text with a 4 pixel rgb(107, 74, 77) colored shadow looks like.

```
.shadow{ text-shadow: 4px 4px 2px rgb(107, 74, 77) }
```

Border

The CSS property to change the border of an element to CIELCh 35, 15.019, 14.810 is called "border". The border property can be set on classes, ids or directly on the HTML element.

This example shows the color as border, it can be applied via the CSS property "border" or "border-color".

```
.border, #border, table{ border:4px solid rgb(107, 74, 77) }
```

If only the border color should be changed use the property `border-color`.

```
.border{ border-color:rgb(107, 74, 77) }
```

If you want to add a box shadow in that color use:

Here you see how a box with a 4 pixel `rgb(107, 74, 77)` colored shadow looks like.

```
.boxshadow{ -moz-box-shadow:4px 4px 4px  
4px rgb(107, 74, 77); -webkit-box-  
shadow:4px 4px 4px 4px rgb(107, 74, 77);  
box-shadow:4px 4px 4px 4px rgb(107, 74,  
77) }
```

Background

The CSS property to change the background color of an element to CIELCh 35, 15.019, 14.810 is called "background". The background property can be set on classes, ids or directly on the HTML element.

```
.background, #background, body{  
background: rgb(107, 74, 77) }
```

If only the background color should be changed can be used:

```
.background{ background-color: rgb(107, 74,  
77) }
```

This example shows the color as background, it is applied via the CSS property "background".

To optimize and compress your CSS code, you can use our [online CSS compressor and optimizer](#) based on csstidy. If you want to create a linear or radial gradient as background or border, check our [CSS Gradient Generator](#).

Hey! You found this booklet interesting? Support Converting Colors with the new Membership Option!

The pro membership hides all ads, plus gives you double the colors in the color bucket, and more awesome pro features!

[Learn more, Memberships starting at \\$2.50/m!](#)

**Follow me
on Twitter!**

@ConvertingColor